

HOMES INSPIRED BY ART & SPORTS



KENWORTH
By **PROVIDENT**

FLOOR PLAN BROCHURE

The imagery used in the brochure is indicative of style only. The photographs of the interiors, surrounding views and location may have been digitally enhanced or altered and do not represent actual views or surrounding views. These photographs are indicative only.

KENWORTH

By PROVIDENT

PVNR Expressway-Rajendranagar, Hyderabad

Integrated Lifestyle District

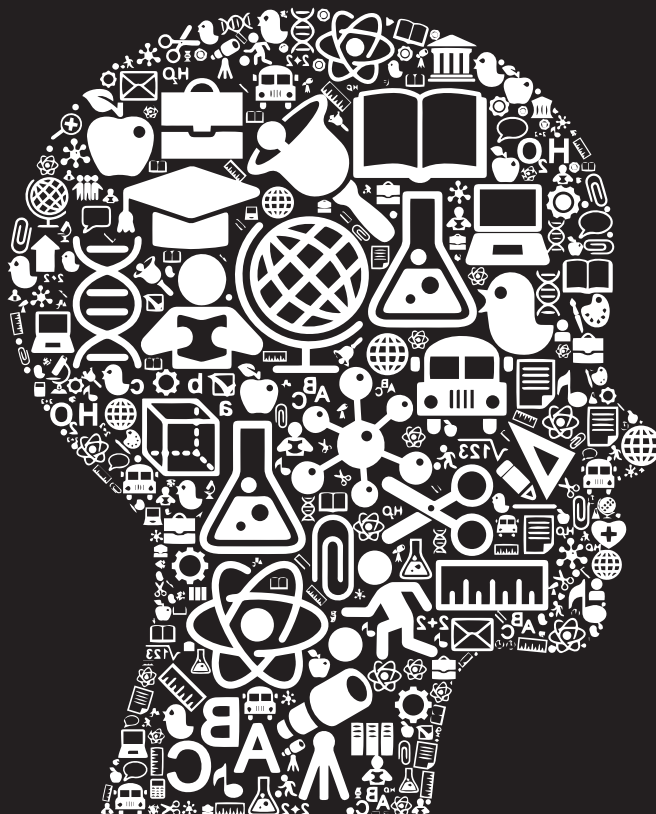
Fabulous 2 & 3 BHK Homes,
Cafés, Boutique Shopping and offices.

{ **Ken: One's range of knowledge.** }
Worth: Value }

At Provident, we believe that our homes should be harbingers of good health and happiness. To this end, we apply our knowledge and experience gained over 40 years to build homes that promote the all round development of every customer.

Kenworth by Provident, at Rajendranagar, Hyderabad, is no different. Planned to keep you positively engaged with life 24/7, this home hosts an exhaustive list of amenities that range from sports facilities to an elaborate health and culture club to shaded walkways.

What's more, in years to come, this iconic address will give you immense satisfaction – both in terms of quality of lifestyle and return on investment.



LOCATION MAP



Location map (not to scale)

BUY HYDERABAD BUY PROVIDENT

WHY INVEST IN HYDERABAD?

- Hyderabad offers the highest quality of living standards – Mercer's report, 2015.
- Its the second largest software exporter in India - \$ 50 bn by 2020.
- City Corporation earmarked Rs. 21,000 crores to improve infrastructure in coming years.

WHY INVEST IN RAJENDRANAGAR ("RN")?

- RN is a self-contained residential area located along the PVNR Airport Expressway. A mere 30 mins drive away from Banjara Hills, Begumpet, Secunderabad & Charminar.
- Quick access for the professions working in the Financial District and Hi-tech City
- Easy access from RN to Highways connecting Bangalore, Srisailem & Nagarjuna Sagar
- With the Metro Rail expected by 2017, the nearest Metro Station at Falaknuma will be just 5 mins away from RN
- Rs. 2631 cr earmarked for 20 flyovers in Hyderabad, will ease connectivity from RN to rest of the city.

INFORMATION TECHNOLOGY INVESTMENT REGION (ITIR ZONE 2)

- RN may benefit the most from the proposed Rs. 2 lakh crore investment in (ITIR ZONE II). Spread over 80 sq. km, it encompasses multiple industrial zones, all of which are within 20 mins to an hour from RN.

PROPOSED INVESTMENTS IN ITIR II

- Rs. 940 crs towards two greenfield electronic manufacturing clusters at Tukuguda.
- Rs. 30,000 crs towards Pharma City at Mucherla.
- Rs. 800 crores towards Electronic Hardware Park at Maheshwaram.
- Rs. 1250 crores towards Multiple Aerospace & Industrial Parks at Ibrahimpatnam & Shamshabad.
- Rs. 250 crores towards Wonderla Amusement Park at Adibatla.
- Amazon inaugurated its Rs. 1800 crores Fulfilment Centre at Kothur.
- Johnson & Johnson, Kothur; Pratt & Whitney Training Centre Shamshabad; Games City, Raidurg; Science City, Kothwalguda; Reliance Business District, Manchirevula and Country's Largest Gems & Jewellery SEZ at Mamidipalli.

MASTER PLAN

- | | | | | | |
|---|-------------------------|----|--|----|---|
| 1 | ENTRANCE & EXIT GATE | 10 | CHILDREN'S PLAY AREA | 16 | MEDITATION ZONE |
| 2 | JOGGING TRACK | 11 | MULTI COURT 1
(MINI FOOTBALL COURT
OR MINI HOCKEY COURT
OR 2 TENNIS COURTS) | 17 | MULTI COURT 2
(VOLLEYBALL COURT
OR KABADDI COURT) |
| 3 | ARCHERY | 12 | OLD FOLKS CORNER | 18 | HIGH JUMP / LONG JUMP
WITH SANDPIT |
| 4 | CRICKET PRACTICE NET | 13 | AMPHITHEATRE | 19 | VISITOR'S PARKING |
| 5 | WATER BODY | 14 | BASKETBALL COURT | | |
| 6 | HEALTH AND CULTURE CLUB | 15 | FITNESS ZONE | | |
| 7 | SWIMMING POOL | | | | |
| 8 | KID'S POOL | | | | |
| 9 | HANGING GARDEN | | | | |



PHASE 3

FLOOR & UNIT PLANS

TOWER - 1

1ST TO 10TH FLOOR



T1-108 to
T1-1008

T1-109 to
T1-1009

T1-107 to
T1-1007

T1-110 to
T1-1010

T1-106 to
T1-1006

T1-111 to
T1-1011

T1-105 to
T1-1005

T1-112 to
T1-1012

T1-104 to
T1-1004

T1-101 to
T1-1001

T1-103 to
T1-1003

T1-102 to
T1-1002

TOWER - 4

1ST TO 10TH FLOOR



T4-108 to
T4-1008

T4-109 to
T4-1009

T4-107 to
T4-1007

T4-110 to
T4-1010

T4-106 to
T4-1006

T4-111 to
T4-1011

T4-105 to
T4-1005

T4-112 to
T4-1012

T4-104 to
T4-1004

T4-101 to
T4-1001

T4-103 to
T4-1003

T4-102 to
T4-1002

PHASE 2

FLOOR & UNIT PLANS

TOWER - 14

1ST TO 10TH FLOOR



T14-108 to
T14-1008

T14-109 to
T14-1009

T14-107 to
T14-1007

T14-110 to
T14-1010

T14-106 to
T14-1006

T14-111 to
T14-1011

T14-105 to
T14-1005

T14-112 to
T14-1012

T14-104 to
T14-1004

T14-101 to
T14-1001

T14-103 to
T14-1003

T14-102 to
T14-1002

TOWER - 15

1ST TO 10TH FLOOR



T15-108 to
T15-1008

T15-109 to
T15-1009

T15-107 to
T15-1007

T15-110 to
T15-1010

T15-106 to
T15-1006

T15-111 to
T15-1011

T15-105 to
T15-1005

T15-112 to
T15-1012

T15-104 to
T15-1004

T15-101 to
T15-1001

T15-103 to
T15-1003

T15-102 to
T15-1002

TOWER - 16

1ST TO 10TH FLOOR



T16-104 to
T16-1004

T16-103 to
T16-1003

T16-102 to
T16-1002

T16-101 to
T16-1001

T16-114 to
T16-1014

T16-113 to
T16-1013

T16-105 to
T16-1005

T16-106 to
T16-1006

T16-107 to
T16-1007

T16-108 to
T16-1008

T16-109 to
T16-1009

T16-110 to
T16-1010

T16-111 to
T16-1011

T16-112 to
T16-1012

TOWER - 17

1ST TO 10TH FLOOR



T17-108 to
T17-1008

T17-109 to
T17-1009

T17-107 to
T17-1007

T17-110 to
T17-1010

T17-106 to
T17-1006

T17-111 to
T17-1011

T17-105 to
T17-1005

T17-112 to
T17-1012

T17-104 to
T17-1004

T17-101 to
T17-1001

T17-103 to
T17-1003

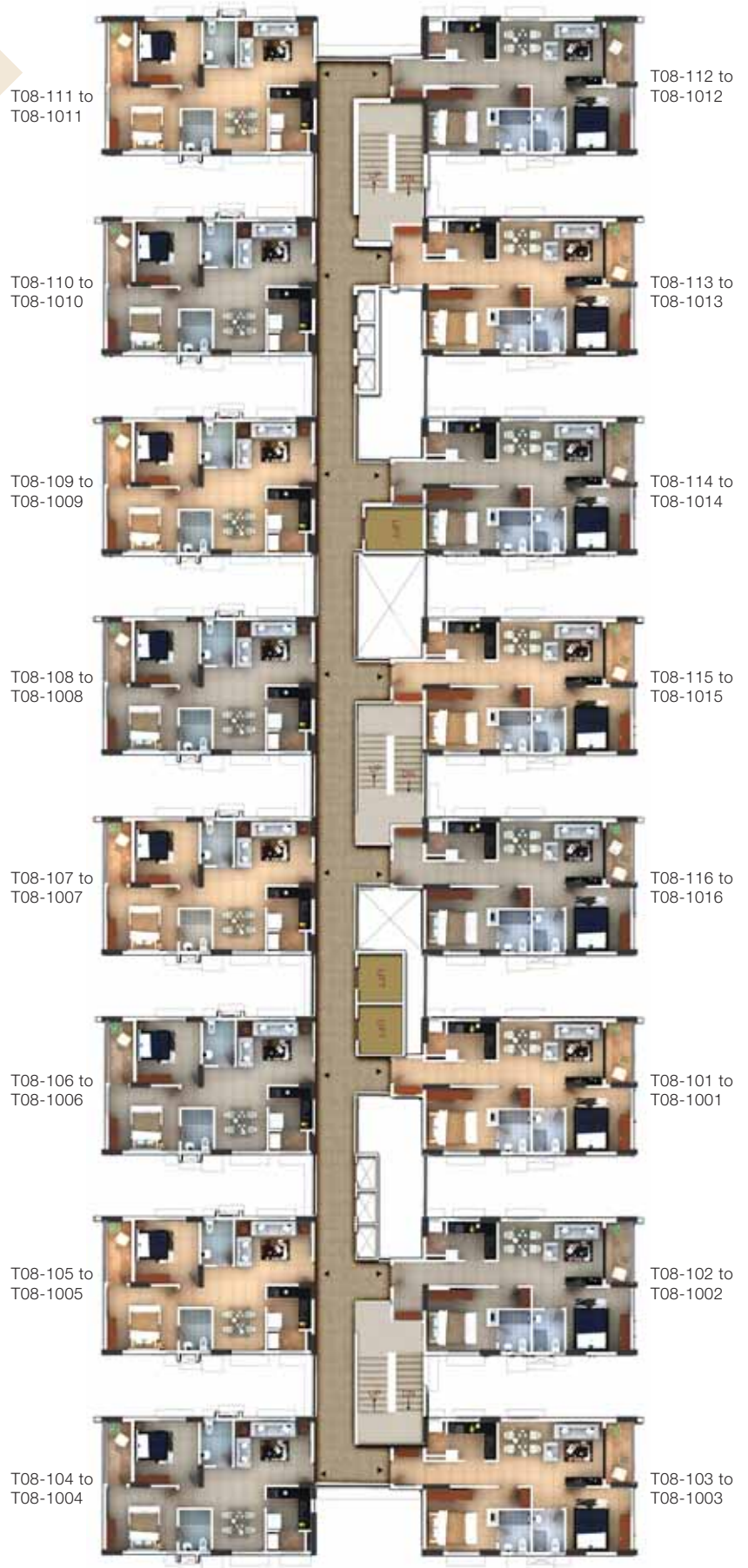
T17-102 to
T17-1002

PHASE 1

FLOOR & UNIT PLANS

TOWER - 8

1ST TO 10TH FLOOR



TOWER - 9

1ST TO 10TH FLOOR



T09-103 to
T09-1003



T09-104 to
T09-1004

T09-102 to
T09-1002



T09-105 to
T09-1005

T09-101 to
T09-1001



T09-106 to
T09-1006

T09-114 to
T09-1014



T09-107 to
T09-1007

T09-113 to
T09-1013



T09-108 to
T09-1008

T09-112 to
T09-1012



T09-109 to
T09-1009

T09-110 to
T09-1010

T09-111 to
T09-1011

TOWER - 10

1ST TO 10TH FLOOR



T10-108 to
T10-1008

T10-109 to
T10-1009

T10-107 to
T10-1007

T10-110 to
T10-1010

T10-106 to
T10-1006

T10-111 to
T10-1011

T10-105 to
T10-1005

T10-112 to
T10-1012

T10-104 to
T10-1004

T10-101 to
T10-1001

T10-103 to
T10-1003

T10-102 to
T10-1002

TOWER - 11

1ST TO 10TH FLOOR



T11-108 to
T11-1008

T11-109 to
T11-1009

T11-107 to
T11-1007

T11-110 to
T11-1010

T11-106 to
T11-1006

T11-111 to
T11-1011

T11-105 to
T11-1005

T11-112 to
T11-1012

T11-104 to
T11-1004

T11-101 to
T11-1001

T11-103 to
T11-1003

T11-102 to
T11-1002

KINGS LEAGUE HOMES

Ultra-Spacious 4 BHK Homes
for A-Listers like you

1ST TO 10TH FLOOR

Modifications on customer request by
combining two independent units in tower 7



TOILET
1525 x 2000
5'-0" x 6'-7"

BEDROOM
2450 x 3100
8'-0" x 10'-2"

BEDROOM
3500 x 3100
11'-6" x 10'-2"

FAMILY LIVING
5425 x 3050
17'-10" x 10'-0"

BALCONY
1175 x 3050
3'-10" x 10'-0"

BEDROOM
3350 x 3050
11'-0" x 10'-0"

**1525mm (5'-0")
WIDE PASSAGE**

TOILET
1300 x 2000
4'-3" x 6'-7"

UTILITY
1600 x 1025
5'-3" x 3'-4"

DINING
3725 x 3000
12'-3" x 9'-10"

KITCHEN
2450 x 2075
8'-0" x 6'-10"

**1000mm (3'-3")
WIDE PANTRY**

FOYER
1475 x 1900
4'-10" x 6'-3"

LIVING / DINING
5475 x 3050
18'-0" x 10'-0"

BALCONY
1175 x 3050
3'-10" x 10'-0"

TOILET
1525 x 2050
5'-0" x 6'-9"

MASTER BEDROOM
3350 x 3050
11'-0" x 10'-0"

UNIT PLANS



Typical 3 BHK Grand



Typical 3 BHK Comfort

UNIT PLANS



Typical 2 BHK Grand



Typical 2 BHK Comfort

DISCLAIMER

Provident Housing Limited (PHL) at its sole discretion reserves the right to change, alter, delete or add any Price / Discounts / specification / design / amenity/ facility / offer. The selling price/ interest rate/subvention period are indicative only and may vary in reality depending on various factors including but not limited to vagaries in home loan interest rate, home loan disbursal, time etc. The selection & allotment of unit is subject to realization of the booking cheque, subject to availability & final confirmation from PHL and allocation of such apartment/s will be at the sole discretion of PHL. PHL at its sole discretion may choose to return the expression of interest (booking cheques) without assigning any reason what so ever. Provident reserves the right to release only a specific number of units under this offer or alternatively may increase the number of units under the offer (Green Shoe Option). The statements, information and opinions expressed or provided in this Presentation and any other subsequent information provided is intended only as a guide to some of the important considerations. Property particulars, terms & conditions and other details given in this presentation are neither an offer nor contract, nor is it an advisory effort by PHL, its employees or its associates. Except for the historical information contained herein, statements in this release which contain words or phrases such as 'will', 'would', 'indicating', 'expected to' etc., and similar expressions or variations of such expressions may constitute 'forward-looking statements'. These forward-looking statements involve a number of risks, uncertainties and other factors that could cause actual results to differ materially from those suggested by the forward-looking statements. PHL undertakes no obligation to update forward-looking statements to reflect events or circumstances. Neither does PHL gives any warranties as to the contents hereof nor shall the same be deemed to be representation them and nor accept any contractual, tortuous or other form of liability for any consequence, loss or damage which may arise as a result of a person acting upon or using the statements, information or opinions in the document. This document is confidential to the addressee and is not to be subject of communication or reproduction wholly or in part. All marketing collaterals/brochures are indicative and are conceptual in nature only. The unit sizes mentioned in the brochure are indicative Super Built-up Area, in square feet. The actual unit size, with complete break-up of Super Built-up area, Built-up area, Share of Common area and Carpet area, will be provided in the agreement copy. Errors & Omissions Excepted.



PROVIDENT[®]

Provident Housing Limited
#8, Ulsoor Road, Bangalore - 560 042
Ph: 1860 258 4444
e-mail: sales@providenthousing.com
website: www.providenthousing.com

BANGALORE | CHENNAI | COIMBATORE | HYDERABAD | MANGALORE



Project financed by: Aditya Birla Finance Ltd. (ABFL) & ICICI Bank Ltd.

Changes may be made during the development and standard fittings and specifications are subject to change without notice. Standard fittings and finishes are subject to availability and vendor discretion. Fittings, finishes and fixtures shown in the images contained in this brochure are not standard and will not be provided as part of an apartment. The information contained herein is believed to be correct but is not guaranteed. Prospective purchasers should make and must rely on their own enquiries. The colours of the buildings are indicative only. This brochure is a guide only and does not constitute an offer or contract. This is a copyright material for only Provident Housing Limited.