



PLAMA
Crest
Luxurious Apartments



Near Govindadas College, Surathkal, Mangalore – 575 014



PLAMA
Crest
Luxurious Apartments





PLAMA Developers

PLAMA Developers is an integrated real estate developer focused on premium developments across South India with its head quarters in Bangalore. The company aspires to be among South India's top real estate companies. **PLAMA** has completed several landmark projects and is currently developing significant projects across South India. **PLAMA** brand reflects trade attributes of impeccable professionalism and bench mark of quality. Every individual who is a part of **PLAMA** strives to ensure quality in the areas of design, project management, execution and infrastructure development. We aim to build inspirational development for our customers with distinctive design, quality construction and finishing. Everything we do is aimed at delighting our customers and ensuring their loyalty over the long term, surpassing customer's expectations.

PLAMA Group currently manages a portfolio spanning across residential, office space, retail, hospitality and social infrastructure in South India.

PLAMA pays as much attention to what the resident will not see as to the exteriors that they will enjoy. From the concrete in the foundation to the wiring hidden in the walls every component meets executive specifications before the property is released. Although one may never see these time consuming process, they see the results-homes that are not only beautiful but safe, quite and energy efficient.

PLAMA's core values of Transparency, Clear Titles and Ethical Business Practices has set the company apart. A strict adherence to statutory compliance has earned **PLAMA** admiration from all its delighted customers.

Highlights

- Spacious VISITORS' LOUNGE on the ground floor with MARBLE / GRANITE FLOORING.
- One AUTOMATIC ELEVATOR, of eight passenger capacity.
- GENERATOR for common and apartment lighting (selected points only) with acoustic enclosure.
- Reticulated gas connection to all apartments (at nominal extra cost).
- CCTV connection from gate to all apartments for maximum security.
- TELEPHONE with CENTREX facility (Intercom) connection to all apartments, security, society room, recreation hall and lobby.
- FIRE FIGHTING SYSTEM.
- GYM FACILITY.
- CHILDREN'S PLAY AREA with play equipments and landscaped garden.
- SOCIETY ROOM on the ground floor and SECURITY ROOM and COMMON TOILET on the basement.
- CAR PARKING (at extra cost).
- CONCRETE INTERLOCK PAVING for car parking and yard.
- VITRIFIED TILE for apartment flooring and Vitrified / Kadapa flooring for staircase and corridor.
- DECORATIVE MELAMINE POLISHED MAIN ENTRANCE DOOR.
- DESIGN GLAZED TILES for kitchen (24" above platform).
- GRANITE PLATFORM with STAINLESS STEEL SINK (42") for kitchen.
- CP PLUMBING FITTINGS for toilets and kitchen.
- WHITE COLOURED SANITARY WARE in all the toilets.
- PUTTY FINISHED ACRYLIC DISTEMPER painting for ceiling and wall.
- MODULAR ELECTRICAL SWITCHES.

*any one or equivalent shall be provided at the discretion of the promoter.



Specifications

GENERAL

- Fully framed RCC structure with basement car parking.
- Double coat exterior plastering with waterproof treatment.
- External painting of the building with exterior emulsion paints.
- Compound Wall and Gate.
- Powder coated Aluminum Windows with steel grills.
- Wooden Door Frames with good quality decorative flush door shutters for rooms and Fibrotech / resin coated flush door shutters for toilets.*
- Powder coated Aluminum door cum windows for terrace and ground floor.
- Metal putty finish enamel paint for doors and frames.
- All types of Door and Window fixtures.
- Electrical fittings for common areas and facilities, car parking and yard.
- Power provided for each apartment with single phase meter.
- Power failure sensing siren.
- Overhead Water Tank and underground Sump Tank with required pumps.
- Borewell or open well connection.

DRAWING / DINING

- TV point and telephone connection.
- Wash basin provision in the Dining.

BEDROOMS

- Telephone and TV points in Master Bedroom.
- AC provision in Master Bedroom.
- Two way light control and night lamp.

BATHROOMS

- Waterproof treatment done for sunken RCC slab.
- Pressure checked plumbing and drainage lines to ensure total leak proof toilets.
- Flush Valves/ Cocks for commodes.
- Hot and cold mixer unit for all bathrooms.
- Floor mounted EWC for all toilets.
- Ceramic Tiles (anti skid) for bathroom floors.
- Provision for exhaust fan with wooden / bison board frame in bathrooms.

KITCHEN AND WORK AREA

- Adequate Power Points.
- Provision for exhaust fan.
- Provision for fixing water purifiers (Aqua Guard) near the sink.
- Plumbing and Drainage connection with Power Point for Washing Machine.





Home built to bring you a sense of achievement

Surathkal is a place that is growing at a tremendous pace due to the presence of ONGC-MRPL, BASF, MCF, and KIOCL. NITK, one of the best professional colleges in India, and Science and Technology Entrepreneurs Park (STEP) is situated here. A seaport, lighthouse and the pristine beaches are some of the other attractions.

PLAMA Crest is a premium residential apartment nestled in the plush residential area near Govindadas College and Hindu Vidyadayini Group of Schools in Surathkal. It is an apartment that is thoughtfully designed to satiate the quest for the finest things in life. Amenities, designs and features are a cut above the rest.

The rooms are spacious to accommodate the needs that will arise after few years. Also they come with large windows to allow the free circulation of air and natural light. The kitchen too exhibits superiority in design. That's not all; the living rooms are what you'll want to be exceptional because it's where you'll be entertaining your guests. In fact, it speaks volumes about you. That's why we have made it the most spacious room in your home, so that you can entertain your guest the way you want. Definitely it's a home that will accommodate your dreams.



Typical Floor Plan

2 BHK – 1160 Sft

3 BHK – 1660 Sft

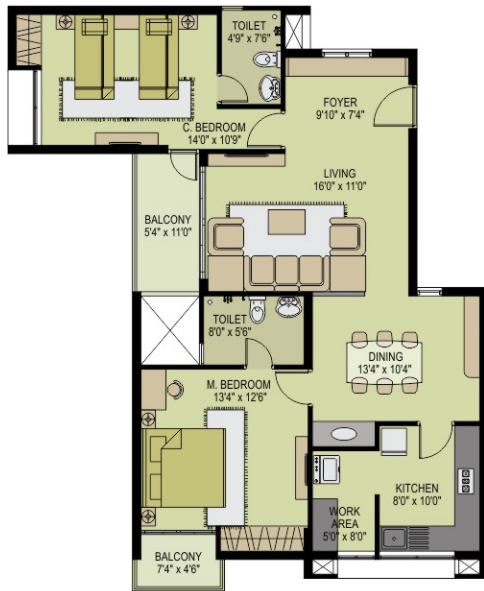


2 BHK – 1370 Sft

2 BHK – 1210 Sft

2 BHK – 1210 Sft

3 BHK – 1715 Sft

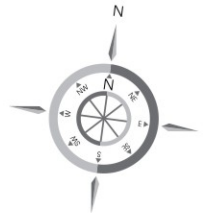
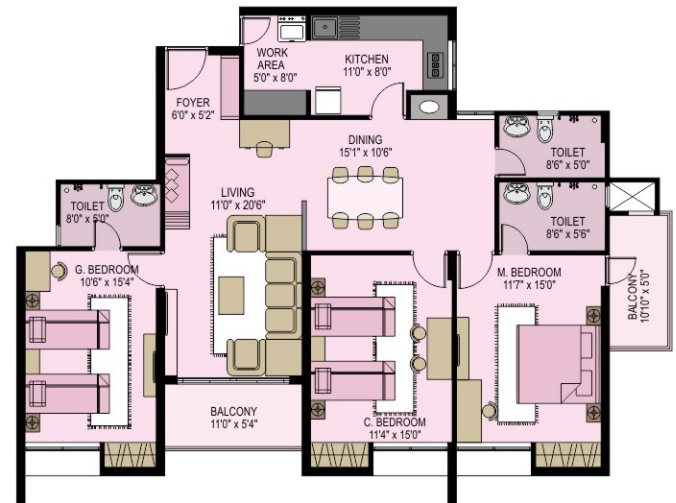


2 BHK
1370 Sft

2 BHK
1210 Sft



3 BHK
1715 Sft



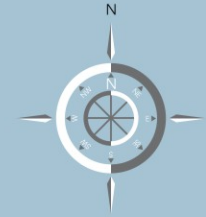
PLAMA
Crest



Surathkal Bus Stand

Govindadas College

Regent Park Hosabettu



Location Map



PLAMA Developers Ltd.

2nd Floor, **PLAMA** Center, Bejai-Kapikad Road, Bejai, Mangalore- 575 004

Ph: 0824 - 4266255, 4277255/ 98807 26124

E-mail: sales_mangalore@plamadevelopers.com, www.plamadevelopers.com

Corporate Office: 21/8, Craig Park, M.G. Road, Bangalore – 560 001

Ph: 080-25584654, 41169841 Mobile: + 91 90080 26893

E-mail: sales_bangalore@plamadevelopers.com

Thrissur: No.19/44/9, First Floor, Centre Point, MG Road, Poothole P.O. Trichur - 680 004

Ph: +91 81293 44255

E-mail: sales_trichur@plamadevelopers.com

Calicut: 5/3403-C6, Space Mall, Mavoor Road, Kozhikode – 673 004

Ph: +91 81293 44755

E-mail: sales_calicut@plamadevelopers.com

CREDAI

