



PLAMA Developers Ltd.



CORPORATE OFFICE:

21/8, Craig Park, MG Road, Bangalore - 560 001
India, Ph: 080-2558 4654, 4116 9841
Website: www.plamadevelopers.com
Email: info@plamadevelopers.com

BRANCH OFFICE:

5/3403 C6, Space Mall, Mavoor Road, Kozhikkode - 673 004
Ph: 8129 344 755, 8129 344 855
Email: sales_calicut@plamadevelopers.com

5/712/A, Millenium, Gandhinagar Road, Chettupuzha (p.o),
Thrissur - 680 621,
Ph: 8129 344 255, 0487-2369 436
Email: sales_trichur@plamadevelopers.com

2nd Floor, PLAMA Centre, Bejai-Kapikad Road, Bejai,
Mangalore- 575 004
Mobile: 9880726124



PLAMA
Fortune
Seven Star Apartments



“Anything Else
would be a compromise”



Profile

PLAMA Developers Ltd.

An ISO 9001:2008 Certified Company

PLAMA Developers is an integrated real estate developer focused on premium developments across South India with its head quarters in Bangalore. The company aspires to be among South India's top real estate companies. PLAMA has completed several landmark projects and is currently developing significant projects across South India. PLAMA brand reflects trade attributes of impeccable professionalism and bench mark of quality. Every individual who is a part of PLAMA strives to ensure quality in the areas of design, project management, execution and infrastructure development. We aim to build inspirational development for our customers with distinctive design, quality construction and finishing. Everything we do is aimed at delighting our customers and ensuring their loyalty over the long term, surpassing customer's expectations.

PLAMA group currently manages a portfolio spanning across residential, office space, retail, hospitality and social infrastructure in South India.

PLAMA pays as much attention to what the resident will not see as to the exteriors that they will enjoy. From the concrete in the foundation to the wiring hidden in the walls every component meets executive specifications before the property is released. Although one may never see these time consuming process, they see the results-homes that are not only beautiful but safe, quite and energy efficient.

PLAMA's core values of Transparency, Clear Titles and Ethical Business Practices has set the company apart. A strict adherence to statutory compliance has earned PLAMA admiration from all its delighted customers.



On Going Projects



PLAMA HEIGHTS, BANGALORE



PLAMA GRANDE, MANGALORE



PLAMA CREST, MANGALORE



PLAMA CASTLE, MANGALORE



PLAMA NEST, MANGALORE



PLAMA CITIUS, MANGALORE



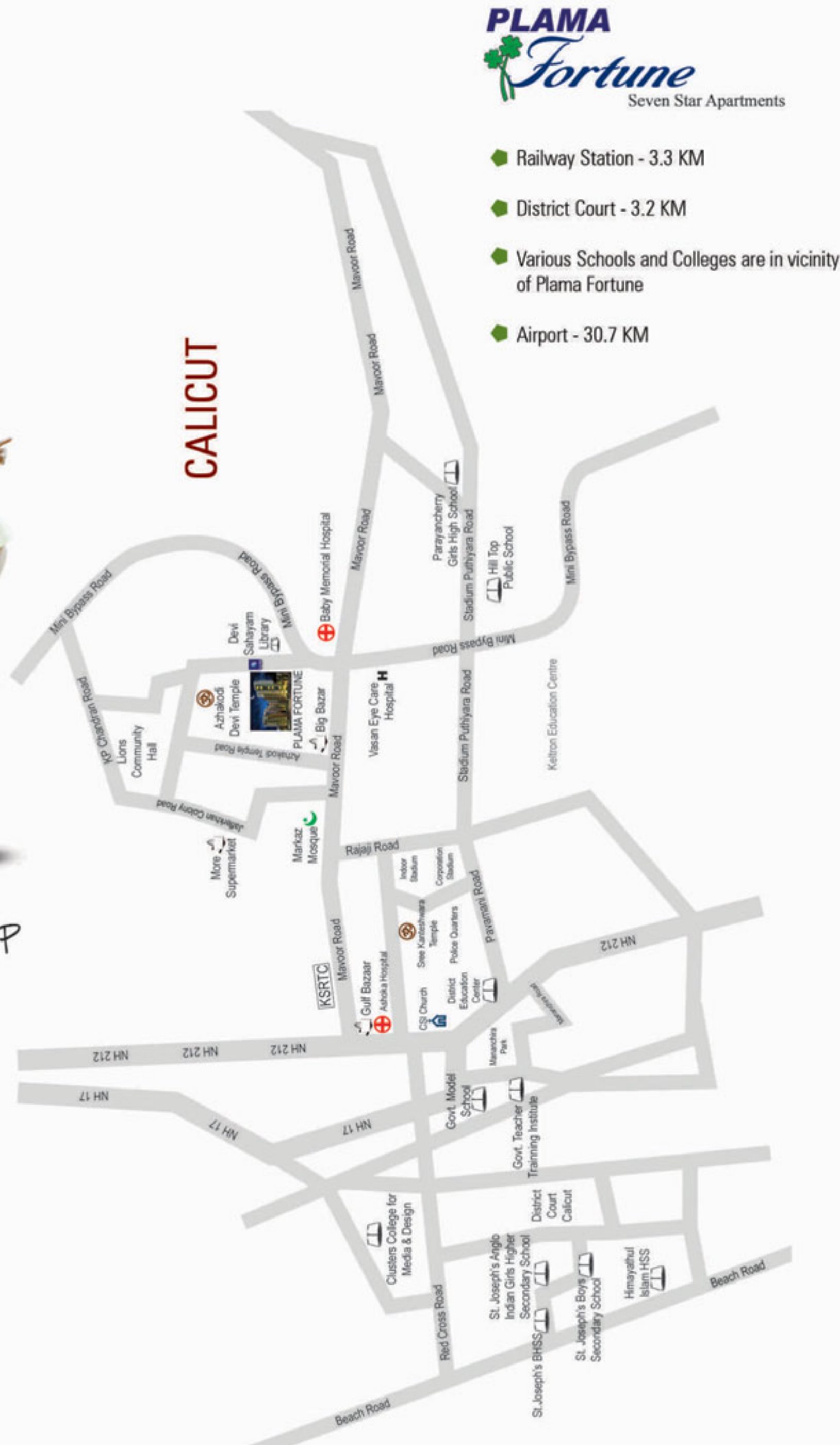
PLAMA SPRINGS, THRISSUR



PLAMA GARDENIA, MANGALORE



Route Map



PLAMA Fortune
Seven Star Apartments

The Second Best city in India to reside in- Kozhikode* offers you the First Seven Star Apartments with ultra modern facilities & amenities. Strategically located off Mavoor Road, with easy access to State of the art Medical center, Schools, Malls, Hotels and Shopping centers. Plama Fortune is the height of luxury living with sensational views at the most desirable location making the proud owners Dream Come True!! It definitely meets all your checklist in search for a luxury living like spacious rooms, swimming pool, club house, children's play area, centralized gas supply, cable/Dish TV, internet, security, visitor's parking, Generator, CCTV etc.

* According to data compiled by economics research firm Indicus Analytics on residences, earnings and investments. Indicus considered six parameters – health, education, environment, safety, public facilities and entertainment.

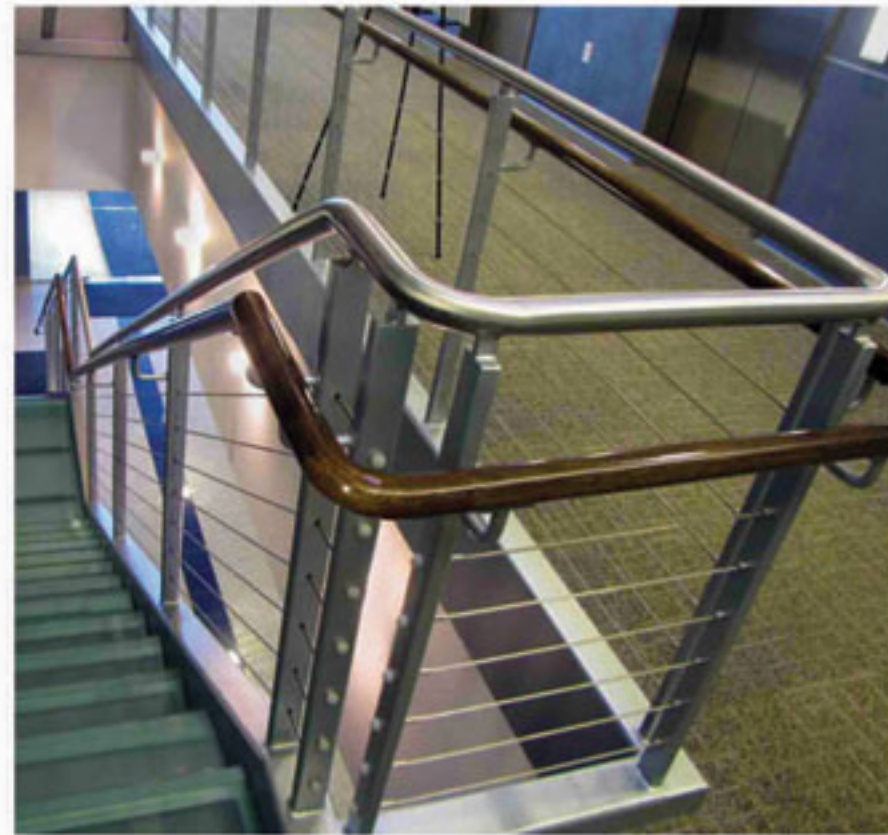


High Lights



Wooden Flooring in Master Bedroom

Stainless Steel Hand Rail



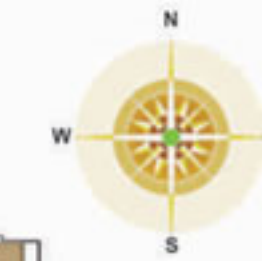
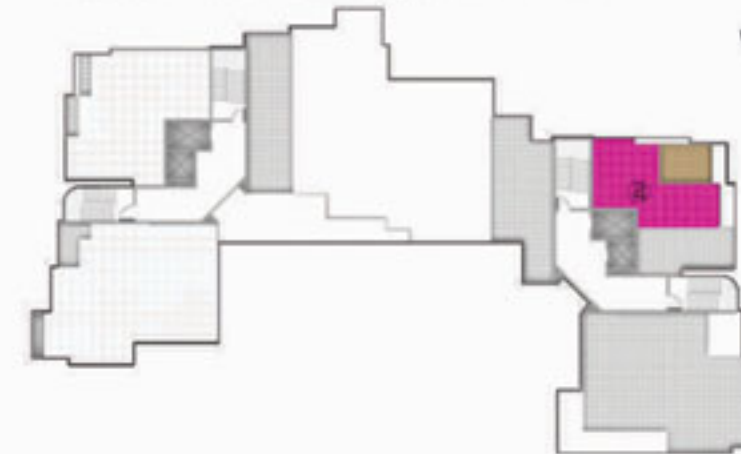
DUPLEX APARTMENT ZU

55.40 Sqm, 596 Sft



1 Open Terrace	10.60 Sqm
2 Upper Living	270x340
3 Toilet	272x150
4 Bedroom	478x300

9th Floor Plan-Type-ZU-802



DUPLEX APARTMENT ZL
 101.79 Sqm, 1095 Sft



Terrace Swimming pool



Gymnasium



Modular Kitchen

PLAMA
Fortune
 Seven Star Apartments



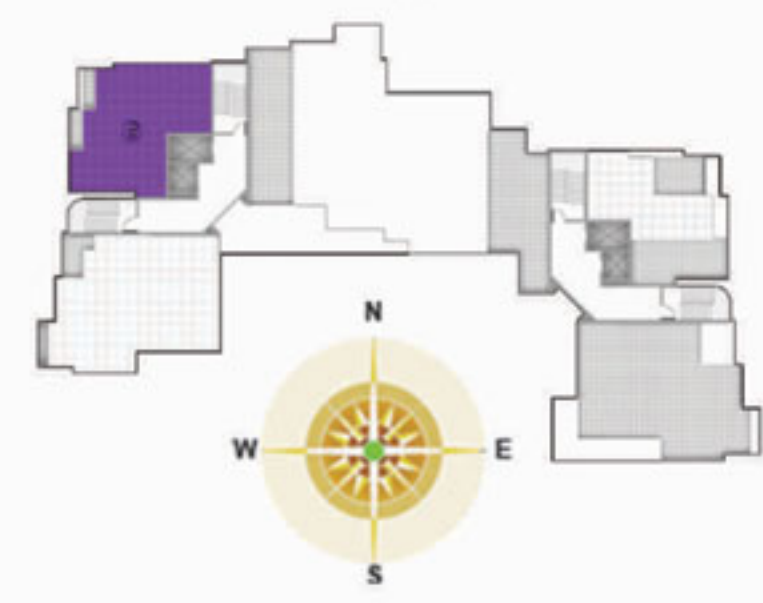
DUPLEX APARTMENT YU

92.10 Sqm, 991 Sft



1 Bedroom	478x300
2 Toilet	305x140
3 Upper Living	320x300
4 Toilet	270x160
5 Bedroom	560x360/280

9th Floor Plan-Type-YU-805

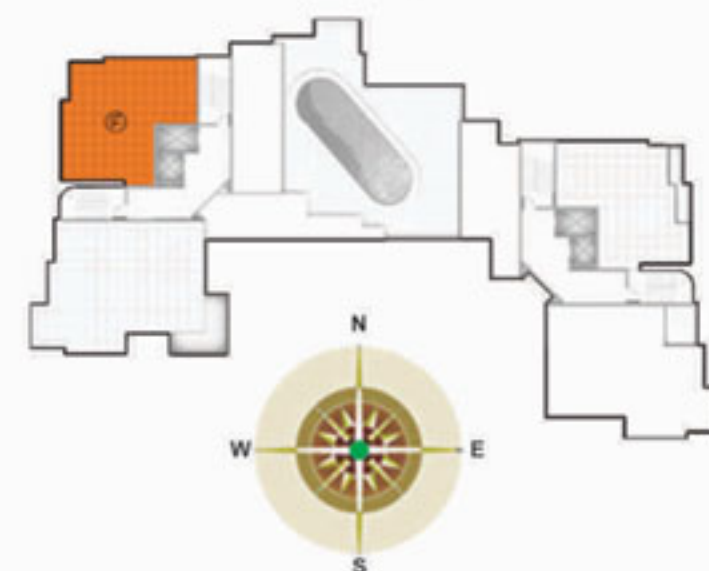


DUPLEX APARTMENT YL
 109.80 Sqm, 1181 Sft



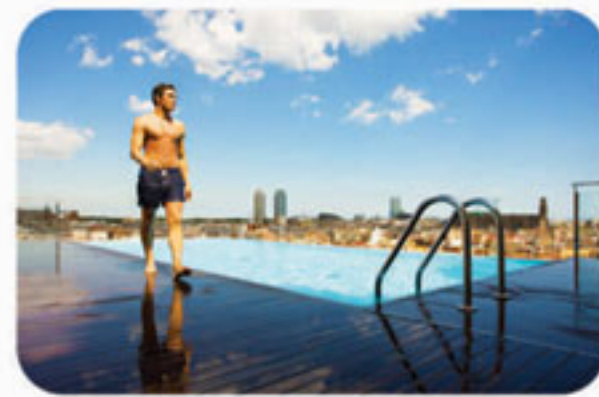
1 Kitchen	300x300
2 Servant's Toilet	100x150
3 Utility Area	180x150
4 Pooja Room	135x140
5 Store	150x140
6 Dining	320x300
7 Drawing	270x480
8 Balcony	270x140
9 Bedroom	390x360
10 Toilet	150x240

8th Floor Plan - Type - YL-805



Site Plan

PLAMA Fortune Seven Star Apartments



Terrace Swimming Pool



Apartment Block



Recreation



Drop Off Point

DUPLEX APARTMENT XU

123.96 Sqm, 1334 Sft



9th Floor Plan-Type-XU-701

8th Floor Plan - Type - XU-806



1 Toilet	290x180
2 Bedroom	330x420
3 Upper Living	300x570
4 Toilet	180x200
5 Bedroom	330x360
6 Toilet	150x300
7 Bedroom	330x480

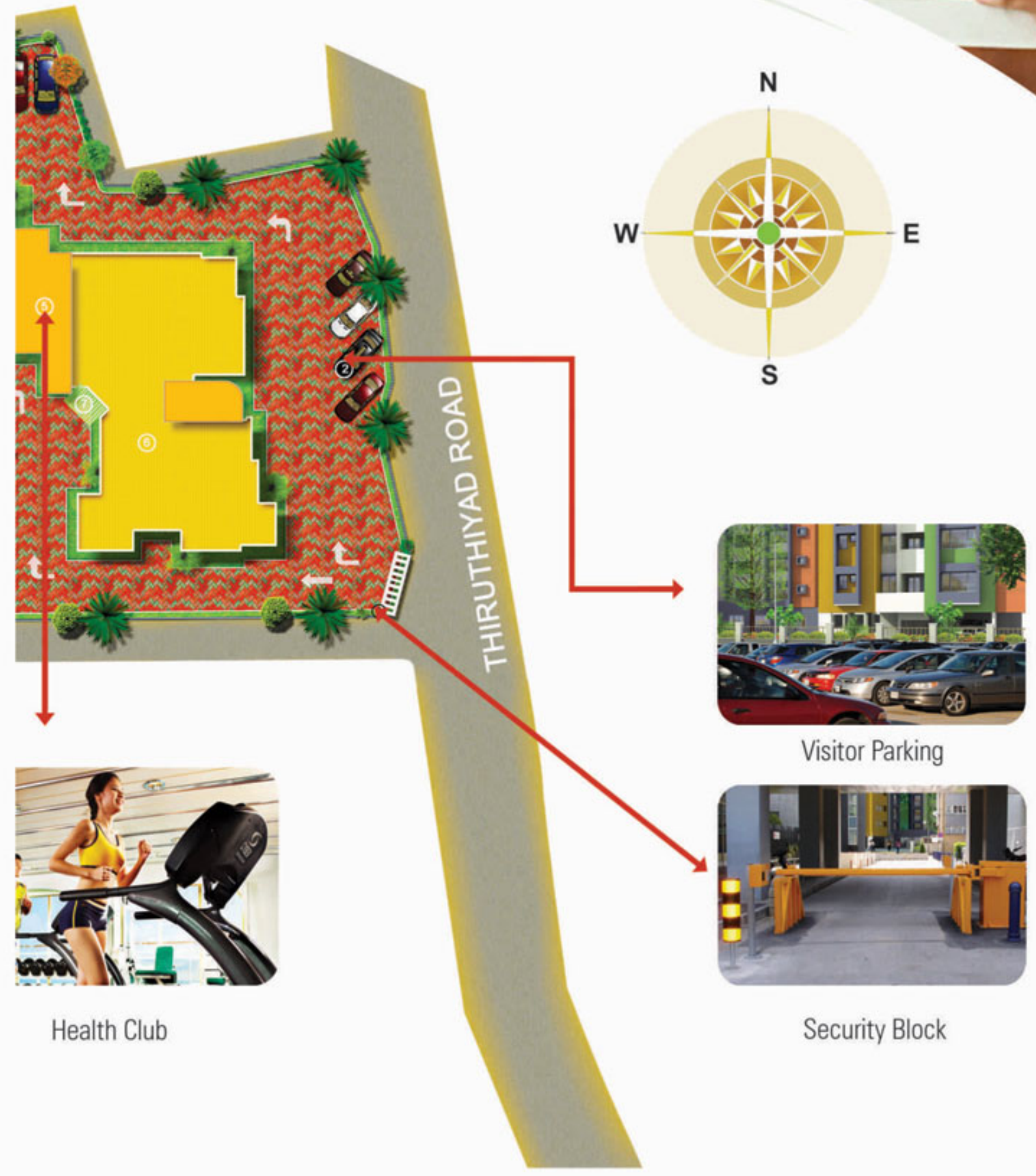
DUPLEX APARTMENT XL
150.66 Sqm, 1621 Sft

1 Balcony	300x210
2 Toilet	140x240
3 Dress	140x240
4 Bedroom	330x420
5 Dining	300x770
6 Drawing	300x480
7 Balcony	200x200
8 Servants Room	190x180
9 Store Room	100x140
10 Kitchen	500x360
11 Utility Area	190x160
12 Servants Toilet	100x140



7th floor Plan -XL-701

8th floor Plan -XL-806



LIFTS

- * Automatic elevators - Mitsubishi or equivalent.

STRUCTURE

- * Fully framed R.C.C. structure.
- * Walls of laterite stone/solid blocks/bricks.

DOORS AND WINDOWS

- * Factory made teak wood main door frame and paneled shutters.
- * Other doors: Wooden frames and flush decorative shutters.
- * Powder coated aluminium / UPVC sliding window.

APARTMENT FLOORING

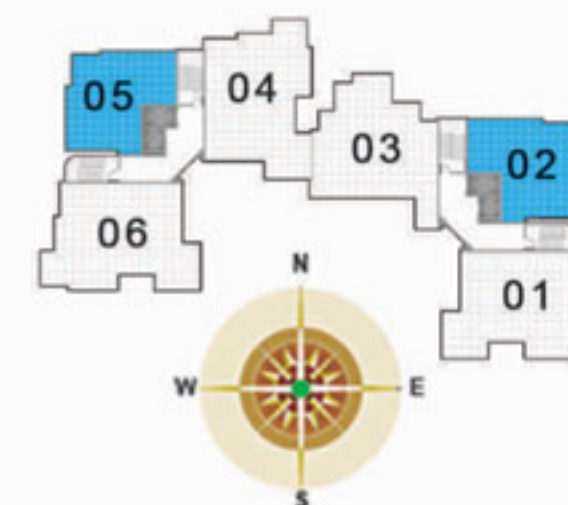
- * Living and dining 2'x2' vitrified tiles.
- * Bedroom 2'x2' vitrified tiles. Master bedroom - wooden flooring.
- * Balcony 1'x1' ceramic tiles.

Specifications



APARTMENT C
109.80 Sqm, 1181 Sft

- 1st Floor Plan - Type - c-102,105
- 2nd Floor Plan - Type - c-202,205
- 3rd Floor Plan - Type - c-302,305
- 4th Floor Plan - Type - c-402,405
- 5th Floor Plan - Type - c-502,505
- 6th Floor Plan - Type - c-602,605
- 7th Floor Plan - Type - C-702,705



1 Balcony	270x140
2 Drawing	270x480
3 Dining	320x300
4 Bedroom	270x360
5 Toilet	120x240
6 Toilet	120x240
7 Bedroom	305x360
8 Utility Area	180x150
9 Servant's Toilet	100x150
10 Kitchen	300x300



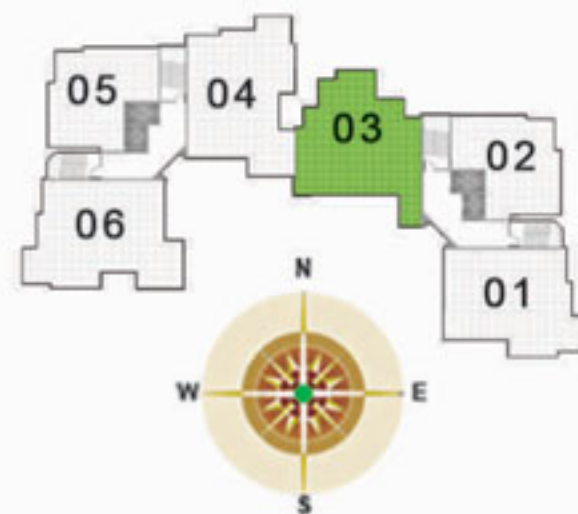
Seven Star Apartments

APARTMENT B
160.30 Sqm, 1725 Sft



ENTRY

- 1st Floor Plan - Type-B-103
- 2nd Floor Plan - Type-B-203
- 3rd Floor Plan - Type-B-303
- 4th Floor Plan - Type-B-403
- 5th Floor Plan - Type-B-503
- 6th Floor Plan - Type-B-603
- 7th Floor Plan - Type-B-703



1 Pooja Room	270x180
2 Drawing	330x415
3 Bedroom	330x415
4 Toilet	150x240
5 Balcony	230x160
6 Dinning	450x330
7 Bedroom	420x330
8 Toilet	240x150
9 Bedroom	330x380
10 Kitchen	240x380
11 Utility Area	165x150
12 Servant's Toilet	110x120
13 Toilet	140x150



Seven Star Apartments



KITCHEN AND WORK AREA

- * 300mm x 300mm ceramic tiles/rectified tiles black granite counter.
- * Stainless steel sink, 2 feet dado above kitchen counter.
- * Modular kitchen cabinets, granite tops, hood, hob, etc.

PAINTING

- * External finishing with exterior emulsion internal finishing acrylic washable distemper.
- * Putty finished and emulsion paint sprayed walls and ceilings.



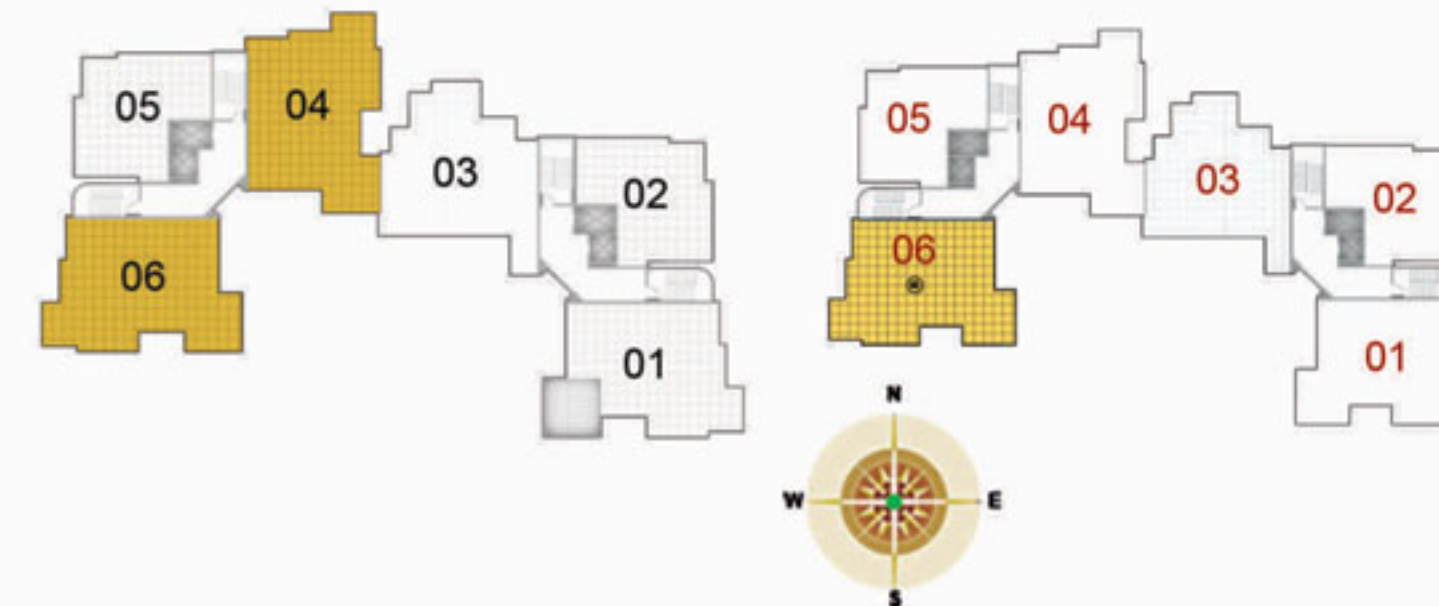
APARTMENT A
 165.94 Sqm, 1786 Sft



1 Utility Area	240x150
2 Servant's Room	180x205
3 W.C.	130x110
4 Kitchen	330x360
5 Toilet	150x160
6 Children's Room	300x360
7 Store	150x120
8 Balcony	200x200
9 Dining	320x330
10 Drawing	300x480
11 Bed Room	330x420
12 Balcony	300x210
13 Bed Room	300x420
14 Toilet	140x240
15 Toilet	140x240

- 1st Floor Plan - Type - A-101,104,106
- 2nd Floor Plan - Type - A-201,204,206
- 3rd Floor Plan - Type - A-301,204,306
- 4th Floor Plan - Type - A-401,404,406
- 5th Floor Plan - Type - A-501,504,506
- 6th Floor Plan - Type - A-601,604,606

7th Floor Plan - Type - A-704,706



ELECTRICAL

- * Concealed copper wiring of ISI standard
- * Concealed provision for air conditioning.

PLUMBING AND SANITARY

- * Off white ivory coloured washbasin E.W.C (wall mounted) with provisions for health faucet. Mixer tap for the shower area.
- * Municipality supply/bore well or open well.
- * Premium range kohler, toto, hindware or equal sanitary wares and tap fixtures.

TOILETS:

- * Non-slippery/ceramic tiles/glazed tiles
- * Counter top wash basins in toilets and dininghalls.
- * Concealed cisterns for water closets.

GENERAL

- * POP cornice for living room.
- * High quality LED switches (Schneider or equivalent).
- * SS hinges and branded hardwares.

AMENITIES

- * Roof top swimming pool
- * SS Handrail for stairs
- * Centralised gas supply (at nominal extra cost)
- * Gymnasium
- * Granite slab for stair steps
- * Children's Play Area

