



**MALABAR  
DEVELOPERS**

Corporate Office:

17/1491-D, 3rd Floor, Malabar Gate, Ram Mohan Road,  
Calicut - 673 004 Ph: 9605000916

Administrative Office:

41/2264, Ground Floor, Malabar Gate, Ram Mohan Road,  
Calicut - 673 004 Ph: 0495-4040916, Fax: 0495-4020916

Regional Office:

3rd Floor, Sita Tower, Althara Junction, Vellayambalam,  
Trivandrum - 695010, Ph: 0471-2766926, Mob: 7559999916

| Thiruvananthapuram | Kottayam | Cochin | Thrissur | Malappuram | Kannur | Calicut | Dubai |



UNVEILING  
NATURE  
WRAPPED  
LIFESTYLE!



**Orchid Park**

**SMARTER HOMES**

PIDARAM | TRIVANDRUM





## ORCHID PARK SMARTER HOMES COMMUNITY BY MALABAR DEVELOPERS

Orchid Park from Malabar Developers is a home apart, with unrivalled luxury and the perfect blend of community styled living. It took an artist to visualise this dream. And now, who wouldn't want to live the artistic dream?





**WHAT'S  
THE DEAL.**

Orchid Park, the a la mode of the season from Malabar Developers, has adopted the concept of NATURE - WRAPPED homes. Adding to it, are its convenience factors. Located at Pidaram in Trivandrum, Orchid Park boasts of landscaped gardens and all the 21st century amenities. Targeting the environmental conscious buyers of this age, Orchid Park definitely sets a benchmark for luxury green living. Orchid Park by Malabar Developers introduces its first tower - Red Orchid for smarter living.



**Red Orchid**  
at  
**Orchid Park**  
SMARTER HOMES  
PIDARAM | TRIVANDRUM



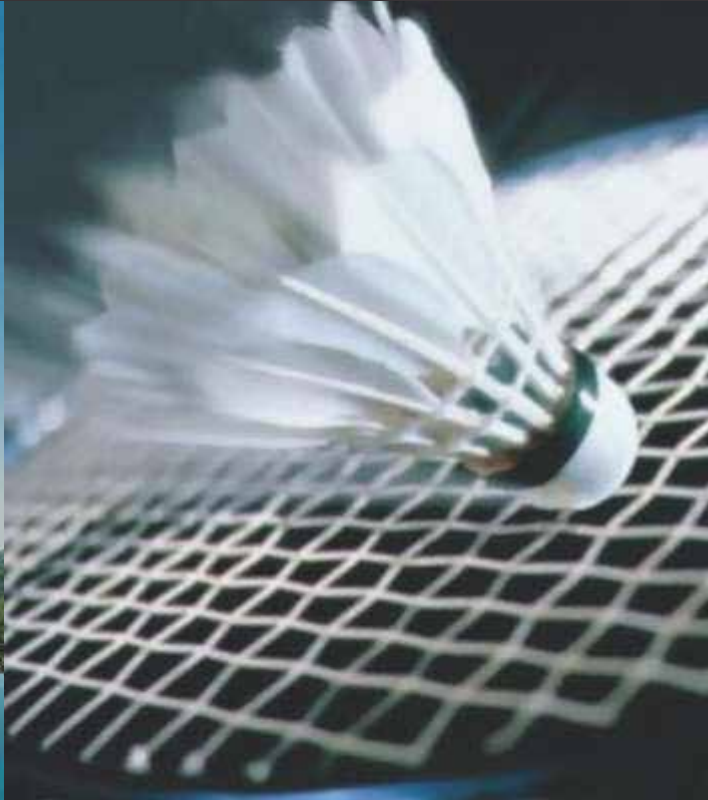
**HERE THERE'S US.  
AND NATURE.**

Sitting among landscaped gardens, the family exclusive residential community encompasses 6 towers housing 147 units of 2 BHK, 3 BHK and customizable 4BHK Duplex apartments offering a tranquil ambiance and exquisite gardens. Setting the benchmark for smart living with a mix of green lifestyles, Orchid Park is all about living nature wrapped yet with all the modern luxuries.





SWIMMING POOL



BADMINTON



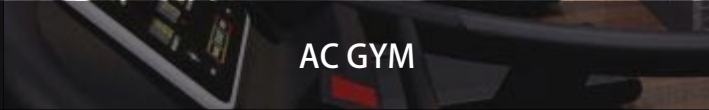
AC GYM



BASKETBALL COURT



KID'S PLAY AREA



INDOOR GAMES ROOM



## HELLO LIFE.

Say hello to a world of amenities to keep you fit. The landscaped gardens give you the perfect scenic view for your evening walk and play the perfect host for your celebrations as you show off the well-landscaped party lawns! Bid goodbye to some of those extra flabs at the in - house recreational centre incorporating a swimming pool, an AC gym, Indoor games room, Badminton and Basket Ball Court, Children's Play area, Sauna / Steam room.

## MEMBERSHIP PRIVILEGE

Here, if your address speaks Orchid Park, you instantly become a member. Not a resident? It's alright. We take non residents too, with a membership fee for the spa and clubhouse.





# FOOD FOR THOUGHT

Orchid Park flaunts gardens in all its true senses. At this day and age where you need to think twice before you buy any veggies, Orchid Park goes that extra length...



...to grow a natural farm  
with all necessities intact.







## **BEAUTY - THE ANCIENT WAY**

The age old Indian nature trick with answers to all your ailments - the Ayurvedic Spa at Orchid Park gives its residents this added privilege. Walk in after a long week to the Ayurvedic Spa centre...





...for a nice refreshing massage

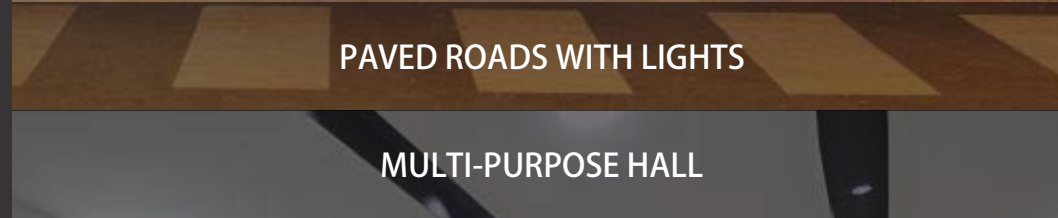




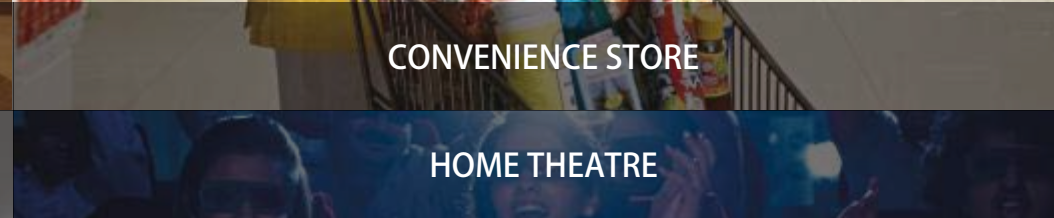
PAVED ROADS WITH LIGHTS



CONVENIENCE STORE



MULTI-PURPOSE HALL



HOME THEATRE



## AND THERE'S MORE

The list does not end here. Orchid Park has within it a convenience store, secured community living facilities, paved roads with lights, home theatre and a multi-purpose hall. In short, going out for even the little things become a matter of second thinking.





**AND FINALLY,  
NATURE  
COMES HOME**

Located at Pidaram in Trivandrum, Orchid Park takes you away from the city, keeping you well connected yet amid lush greenery. The perfect place to retire after a long day of work, come home to the chirping of birds and wake up to call of the wild. Live in a city within a city. With the kind of lifestyle here, going out for petty things becomes the least of your worries. It's time to Live Smart!



**FLOOR PLANS**