



ALLIANCE
Developers

www.alliancegroup.info

ALLIANCE
Bel Air

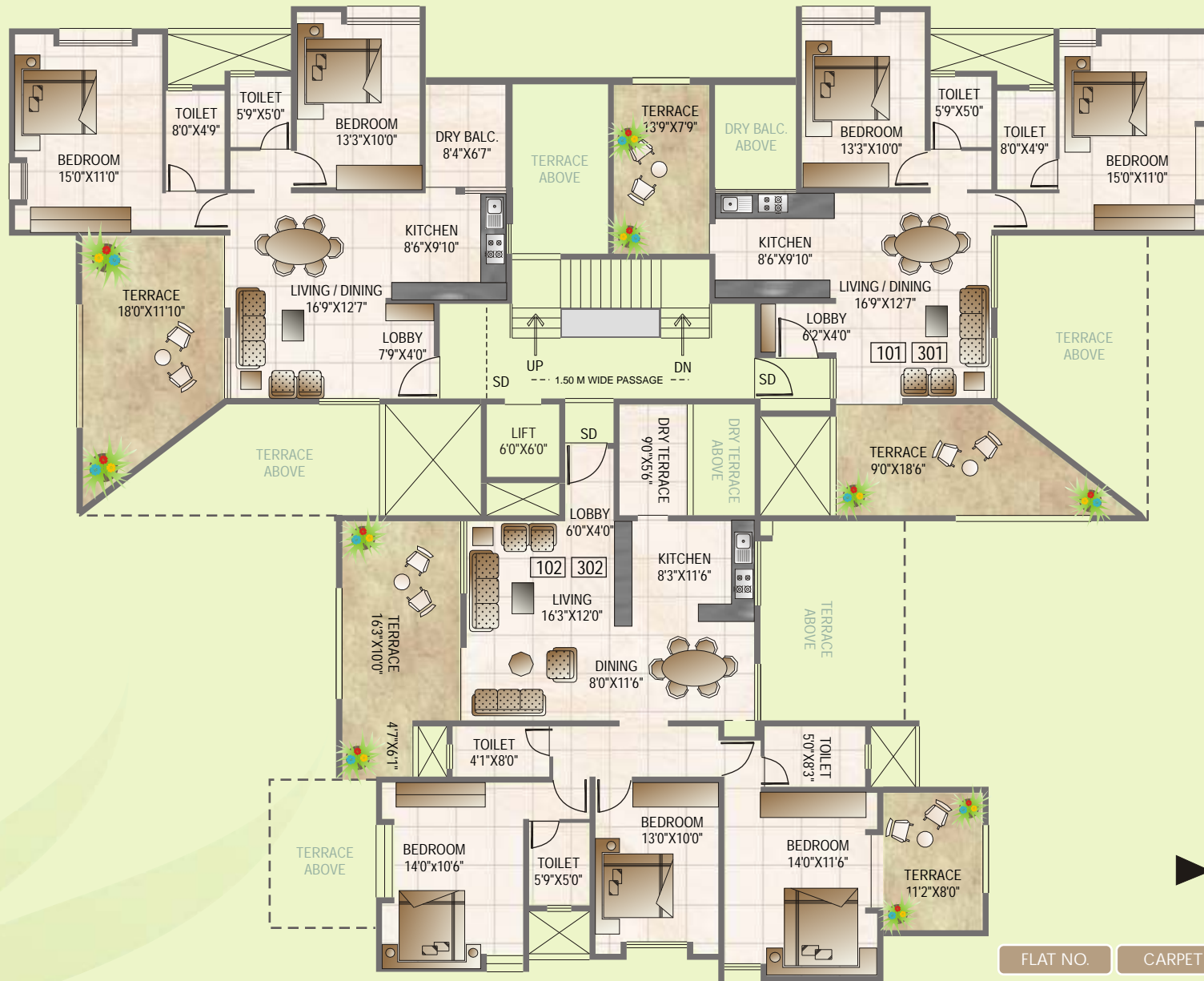
2 & 3 BHK Breeeezy Apartments @ Baner

The ~ breeeeze ~ of happiness...

The ~ breeeze ~ of happiness...



TYPICAL FIRST & THIRD FLOOR PLAN



| FLAT NO. | CARPET | TERRACE | SALEABLE |
|----------|--------|---------|----------|
| 101,301 | 772 | 275 | 1137 |
| 102,302 | 1098 | 335 | 1582 |
| 103,303 | 777 | 269 | 1139 |

TYPICAL SECOND & FOURTH FLOOR PLAN



| FLAT NO. | CARPET | TERRACE | SALEABLE |
|----------|--------|---------|----------|
| 201,401 | 773 | 268 | 1134 |
| 202,402 | 1097 | 335 | 1580 |
| 203,403 | 777 | 270 | 1140 |

SPECIFICATIONS

RCC

- High quality earthquake resistant RCC frame structure

Walls

- 6" thick external and internal walls

Plaster

- Sand faced external plaster with cement paint along with texture color
- Neeru finished internal plaster with oil bound distemper

Flooring

- 24"x24" vitrified tiles in all rooms
- 12"x12" antiskid tiles in toilets and terraces

Windows

- Powder coated Aluminum sliding windows with mosquito net and safety grills
- Granite sills for all windows

Kitchen

- Main platform of black granite 2' 3" wide with 'Nirali' stainless steel.
- Designer wall tiles
- Provision for exhaust fan
- Provision for water purifier

Doors

- Decorative main door with brass fittings and night latch (Godrej / Europa)
- Marble door frames for toilets, FRP or laminated (waterproof) shutters
- SS cylindrical locks

Toilets

- Designer glazed dado tiles on the walls up to 7'0" height
- Hot and cold mixing units in all toilets
- Jaquar or equivalent toilet CP fittings
- Provision for exhaust fan
- Wall hung commodes in two toilets
- Pastel colored sanitary ware of Parryware/Cera
- Concealed plumbing work

Electrical

- Concealed copper wiring (Anchor/Polycab)
- Anchor Roma modular switches
- AC points in all bedrooms with foot lamp
- Lifts of reputed company

AMENITIES

Decorative compound wall

Classy ambience

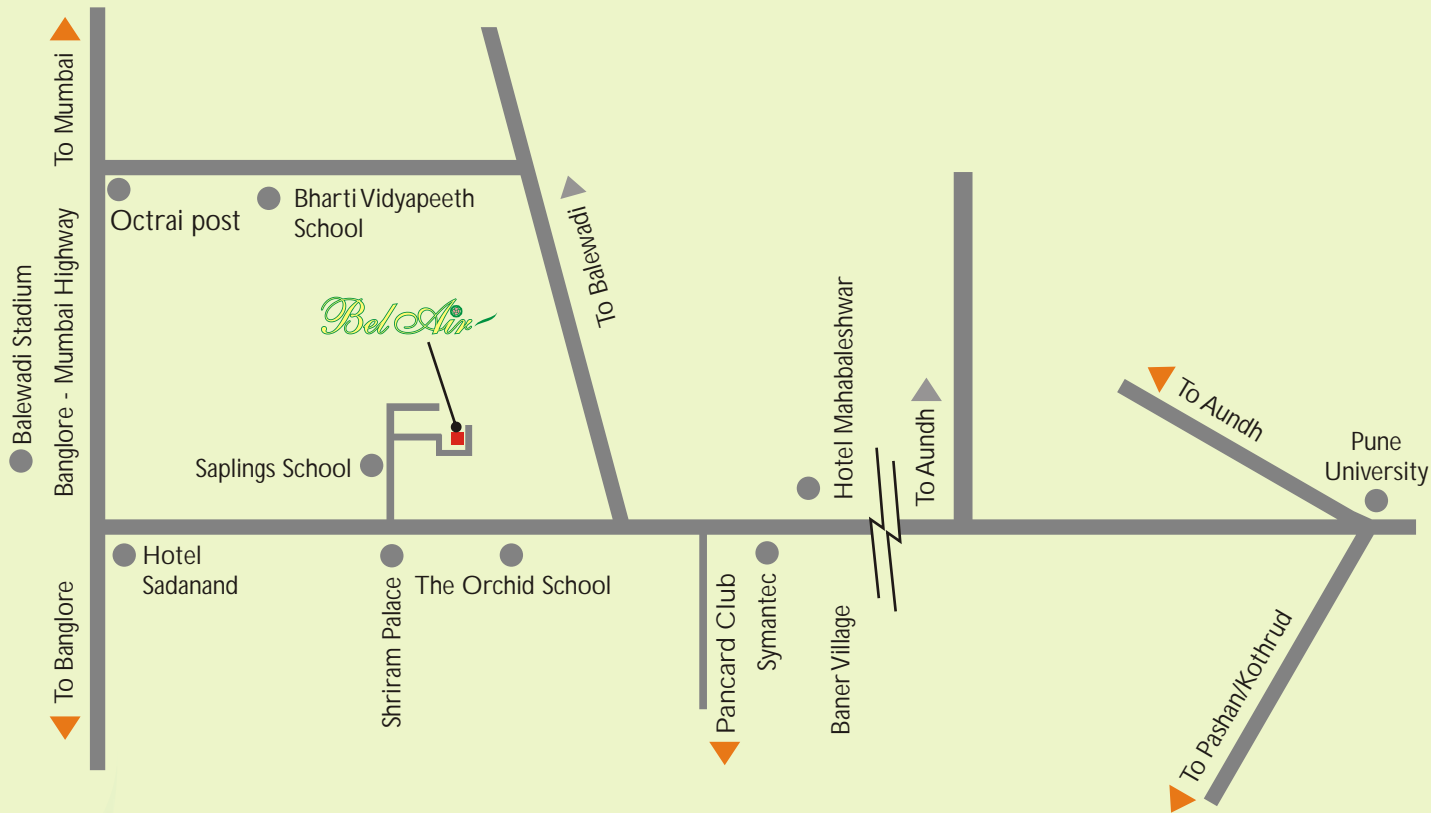
Latter box

Internal paving/concrete roads



Site Address:
Sr. No. 131, Hissa No. 1A/4
Ramindu Park, Baner, Pune

Location Map



CREDITS

Architect
Prakash Chandak
9822038167

RCC Consultant
Parag Chopda
9823031207

Legal Advisor
R.V. Daravade
9822652142

For Booking Contacts : 9823079076 / 9422001361



ALLIANCE
Developers

www.alliancegroup.info

Office:

- 4th Floor, Bramha Chambers, Tilak Road, Nr. Janata Sahakari Bank Ltd.
Pune 411 030 Tel: 020-24473420
- Rahul Complex, D Wing, 2nd floor office no. 23, 24 & 25 Paud Road, Kothrud.
Pune 411 038 Tel.: 020-2543 5151 Fax : 020 25424824
Email : sanjaypatel1975@gmail.com