

*Everyday* you will find the  
new wave of escalation



  
SWARAJ  
QUEENSBAY  
KOPARKHAIRANE



Everyday  
*Stylish*  
where every corner is been elegantly designed

Homes that is more than four walls. Homes that is home plus. Homes for people from all walks of life. Swaraj Group is presenting you something like this where homes are more than Style.

'Swaraj Queensbay' at Koparkhairane, Navi Mumbai is the perfect example of it. It's a grand residential splendour that represents both regality and class. Adding the last piece to the picture is the fantastic and world class amenities all at one place.

Some look for the best in everything. Best in luxury, best in lifestyle and comfort. Now what makes an obvious choice is a promising Life in a unique style.

- Majestic Tallest Tower of 31 storeys
- Luxurious 2 BHK, 2 BHK with terrace & 3 BHK Flat
- A feel of a Bungalow apartment...having 'One Flat on One Floor'





Everyday *Enjoyable*  
that make everyday exciting

Swaraj Queensbay' brings you desirable homes that touch you on all your comfort points. Economy, connectivity and cosiness weaved altogether in classic place called-home. Select from a wide variety of beautiful locations for your dream abode, or, enjoy the amenities for better living and for the better future ahead.

- Branded Schindler high speed glass lift having sea view with Swipe card system
- Grand entrance designer lobby with A/C waiting lounges
- Attractive temple at ground level
- Hi-tech security system with video door phone and CC TV
- Intercom facility
- Power backup for elevators and common lights
- Earthquake resistant RCC structure





# SWARAJ QUEENSBAY



## Podium Level (First Floor)

- Landscape Garden • Swimming Pool • Kid Zone • Party Hall
- Full equipped Air-conditioned Gymnasium with Sauna room
- Indoor game parlor cum activity area



Everyday *Perfect*  
with perfect desires.



#### Living Space & Kitchen

- Italian composite marbles in all rooms and lobby
- Kitchen with granite platform, stainless steel sink & latest modular cabinets with service platform
- Full height imported designer tilling inside kitchen



#### Bathrooms

- Contemporary bathroom designs with branded sanitary fittings
- Full height imported designer tilling inside bathrooms and WC
- Provision of space for wash basin and washing machine



#### Doors & Windows

- Designer doors with decorative fittings
- Branded UPVC window with one way glass

#### Paints & Electricals

- Gypsum walls in all rooms with acrylic emulsion paint on all walls
- Concealed copper polycap wiring with ample electrical points & modular switches including provision of points for AC, Washing Machine, Geyser, Aquaguard, Exhaust Fan & Internet



SWARAJ GROUP

YOUTH CENTRE



Everyday *Classy* to rejuvenate from top to bottom.







SWARAJ  
QUEENSBAY



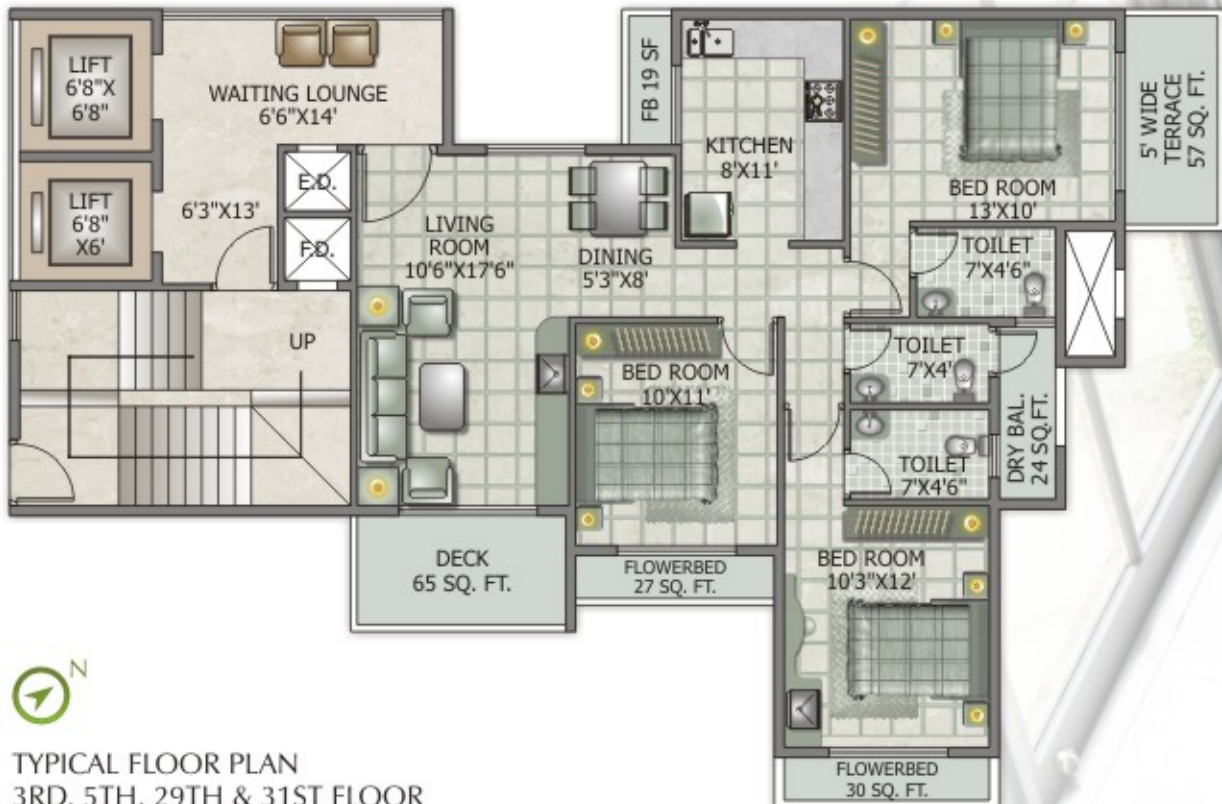
PODIUM FLOOR PLAN



Everyday *Wonderful*  
gives a wonderful place to live in.



TYPICAL FLOOR PLAN  
2ND, 4TH, 6TH, 10TH, 14TH, 18TH,  
22ND, 26TH, 28TH & 30TH FLOOR



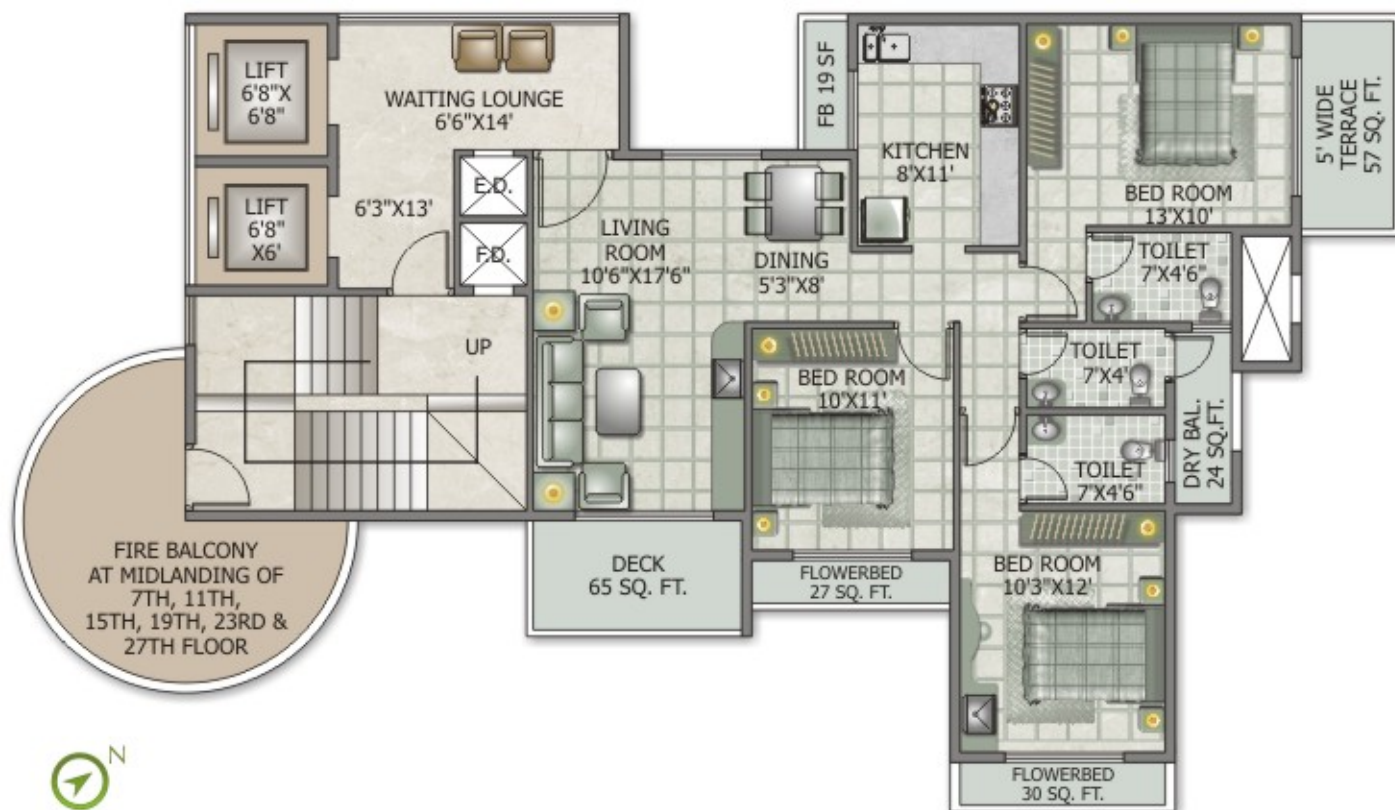
TYPICAL FLOOR PLAN  
3RD, 5TH, 29TH & 31ST FLOOR



SWARAJ  
QUEENSBAY



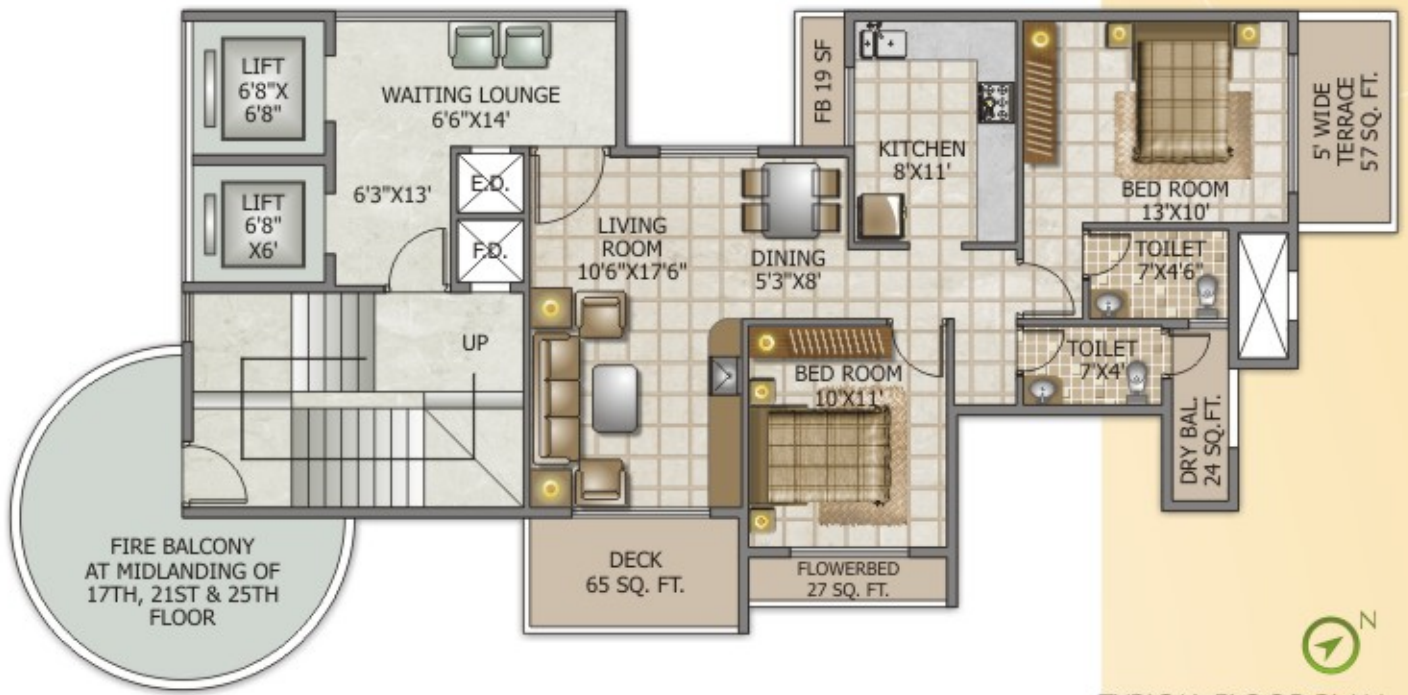
Everyday *Idyllic*  
with compact living in open spaces.



TYPICAL FLOOR PLAN  
7TH, 11TH, 15TH, 19TH, 23TH & 27TH FLOOR



TYPICAL FLOOR PLAN  
8TH, 12TH, 16TH, 20TH, 24TH FLOOR



TYPICAL FLOOR PLAN  
9TH, 13TH, 17TH, 21ST, 25TH FLOOR



Everyday *Inspiring*  
where everything is closer.



'Swaraj Queensbay' is located in one of the promising places of Navi Mumbai, Koparkhairane. It's a place where convenience is been conveniently connected. Tucked into a sprawling of landscaped greenery with super-exclusive features that make it a premium place to live in.

- Behind Mega Reliance Beverly Park
- The tower is in close proximity to Engineering & Pharmacy College, Technical Institute, Schools & Shopping Malls
- Just few km. from Koparkhairane Railway Station
- Walking distance to Dhirubhai Ambani DAV School



# SWARAJ QUEENSBAY



Plot No. 72(D, F, G, H & J) Sector - 14, Behind Reliance Beverly Park, Koperkhairane



Developers:

**SWARAJ BUILDERS & DEVELOPERS**

111-112, Arenja Corner, Plot No. 71,  
Sector-17, Vashi, Navi Mumbai- 400 701.  
Tel.: 2765 0303 / 7766 • 2788 4488 / 1188  
Email: [info@swaraj.co.in](mailto:info@swaraj.co.in)  
Website: [www.swaraj.co.in](http://www.swaraj.co.in)

For Booking Contact :

414 22222 • 93 2030 2030 • 93 2004 0520

Architect

SOYUZ TALIB ARCHITECTS

R.C.C Consultant

B. S. SUKHTHANKAR & ASSO.

Legal Adviser

HIMANSHU BHEDA & CO.

Note : All plans, drawings, amenities, facilities, etc. are subject to the approval of the respective authorities and would be changed, if necessary. The discretion remains with the developer. All renderings, floor plans, pictures and maps are the artist's conceptions and not actual depictions of the building, its walls, roadways or landscaping. Dimensions in plan are mentioned in British systems for user's ease. Conversion : - 1 SMT = 10.764 sq.ft. 1 RMT = 3.28 ft.  
Italian composite marbles & branded UPVC window with one way glass (w.c.f 1-1-2009)