



Project Promoted by



2nd Floor, Gulmohar Plaza, Next To Divekar Hospital, Viva College Road, Virar (West).  
Contact Detail : 0250 304 2300 / 251 0111 • Sales Enquiry : +91 80 80 80 94 64 / sales@swastikspaces.com  
Site : **Green Village**, Survey No. 111/112, Next to Tata Housing, Betegaon, Boisar (East), District Palghar

Architect : Ajay Wade & Associates

Joint Venture Partner



INFINITY DESIGN LAB +91-91-67839405

Note : All plans, drawings, amenities, facilities etc. are subject to the approval of the respective authorities and would be changed, if necessary. The discretion remains with the developer.



*Sanctuary for the soul*



# COSMOS PARADISE

Boisar - E

Joint Venture by



## Features

- Commercial & Residential Building
- Open & stilt parking
- Beautiful landscape garden
- Well-equipped children's play area
- Decorative entrance lobby
- Well planned flats with proper ventilation and lights
- Reputed brand elevators
- Earthquake resistant RCC construction work
- Curtain in living room and bedroom
- Tube/fan in living room
- Water Tank over bathroom RCC Loft
- Modular Kitchen



- 3 Buildings of G + 4 Storey
- 9 Wings & Spacious 1 RK & 1 BHK Flats & Shops
- Gated Community

# POOJA TOWNSHIP

Boisar - E

Joint Venture by  
**SWASTIK GROUP**  
*Stay ahead of the times. Stay with us.*  
**SAI POOJA BUILDERS & DEVELOPERS**

## Features

- Commercial & Residential Building
- Open & stilt parking
- Beautiful landscape garden
- Well-equipped children's play area
- Decorative entrance lobby
- Reputed brand elevators
- Well planned flats with proper ventilation and lights
- Earthquake resistant RCC construction work
- POP moulding with false ceiling in Living room



- 4 Buildings of G + 4 Storey
- 14 Wings & Spacious 1 RK, 1 BHK & 2 BHK Flats & Shops
- Gated Community

# JUPITER COMPLEX

Boisar - E



## Features

- Commercial & Residential Building
- Open & stilt parking
- Beautiful landscape garden
- Well-equipped children's play area
- Decorative entrance lobby
- Reputed brand elevators
- Earthquake resistant RCC construction work
- Power backup for lifts & common areas.
- High speed lifts
- Modular Kitchen



- 2 Buildings of G + 4 Storey
- 8 Wings & Spacious 1 BHK & 2 BHK
- Gated Community



## GREEN VILLAGE

SWASTIK GROUP VENTURE

### FLAT AMENITIES

#### LIVING ROOM & BEDROOM

- Vitrified flooring in the flat
- Beautiful Decorative main door
- Decorative M.S. Railing
- P.O.P. Finish Walls with attractive paint in each flat

#### KITCHEN

- Granite kitchen platform with S.S. Sink
- Glazed decorative tiles upto kitchen window sill level

#### BATHROOM

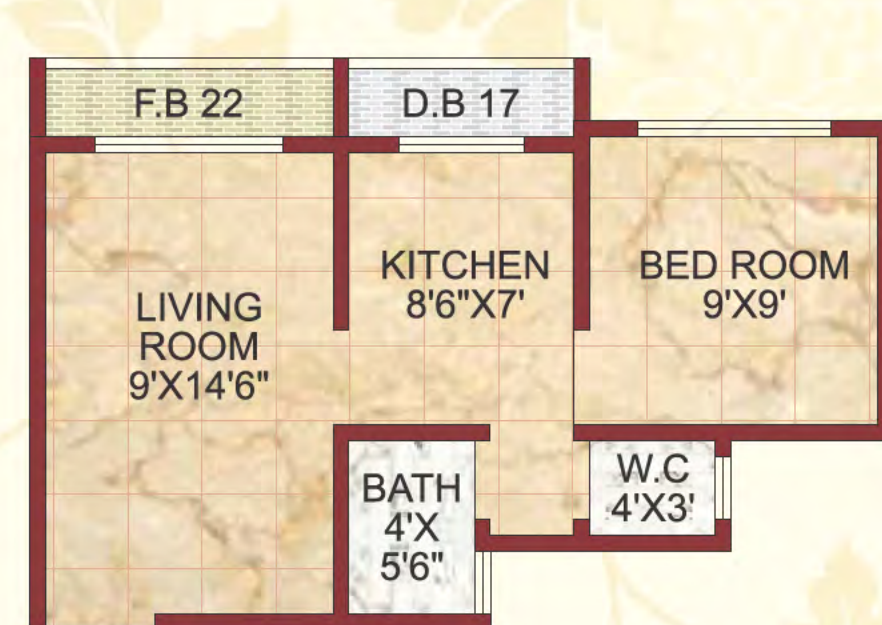
- Antiskid floor tile
- Designer Bathroom tile
- Marble Door frames for Bathroom
- Concealed plumbing
- Best quality sanitary and bath fittings
- R.C.C loft over Bathroom

#### WINDOWS

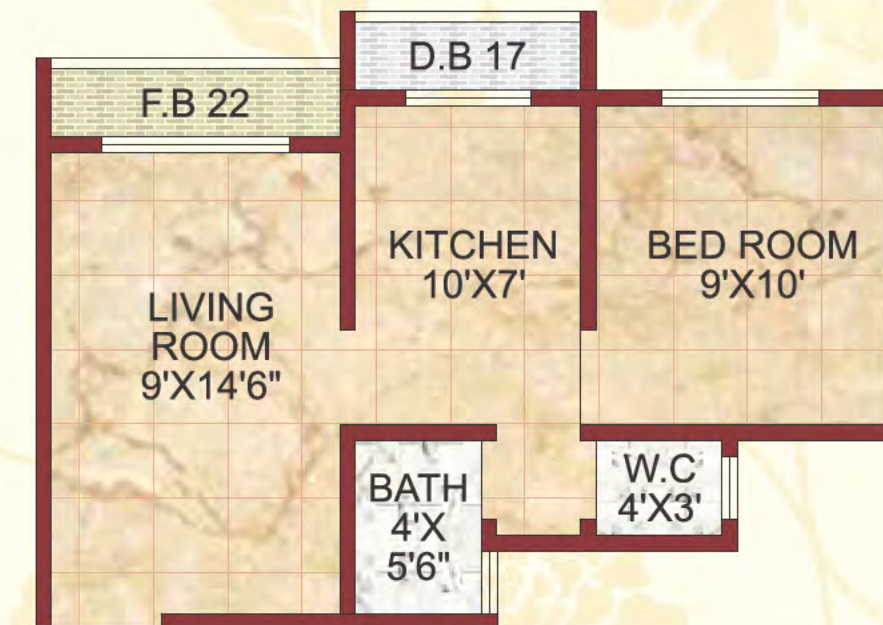
- Powder coated aluminum sliding
- Windows with attractive and quality glass
- Marble / Granite Window Sills

#### ELECTRIC

- Concealed copper wiring
- Quality Electrical fittings
- Safety features like MCB & ELCB



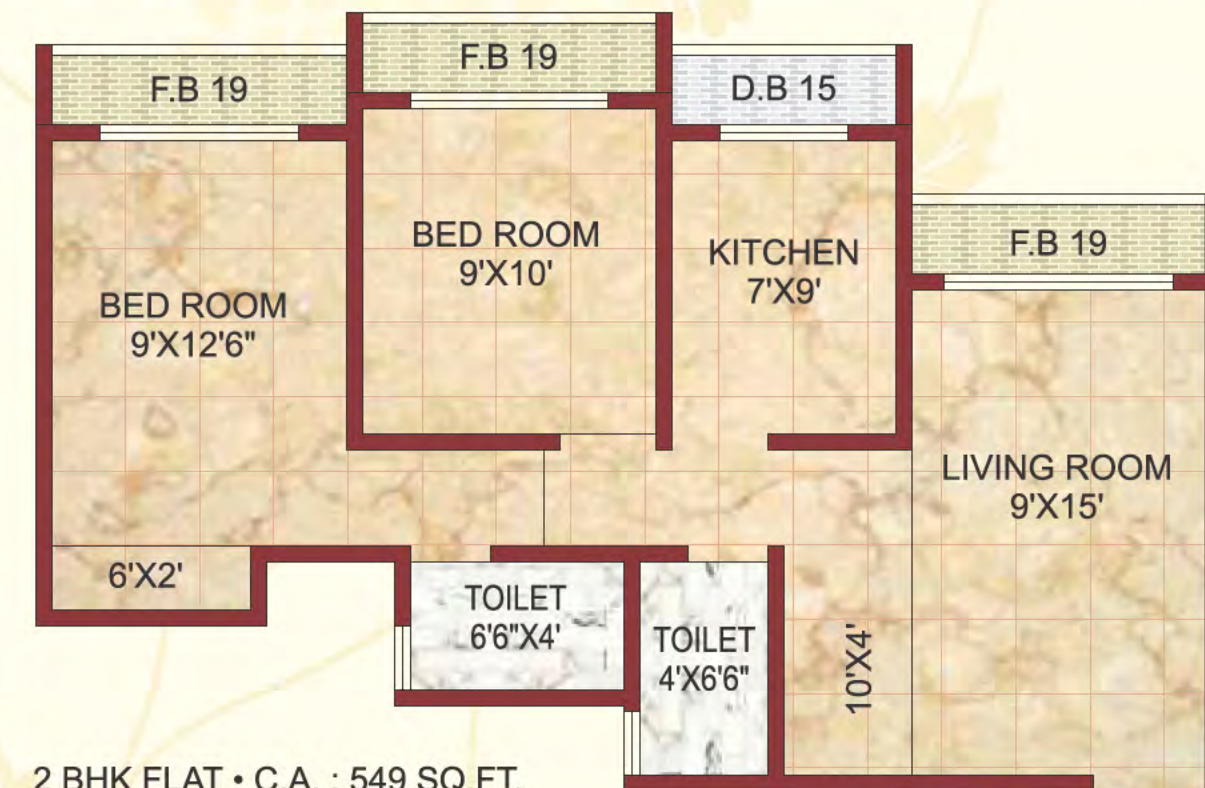
1 BHK FLAT • C.A. : 315 SQ.FT.



1 BHK FLAT • C.A. : 335 SQ.FT.



1 BHK FLAT • C.A. : 383 SQ.FT.



2 BHK FLAT • C.A. : 549 SQ.FT.



**GREEN VILLAGE**  
SWASTIK GROUP VENTURE

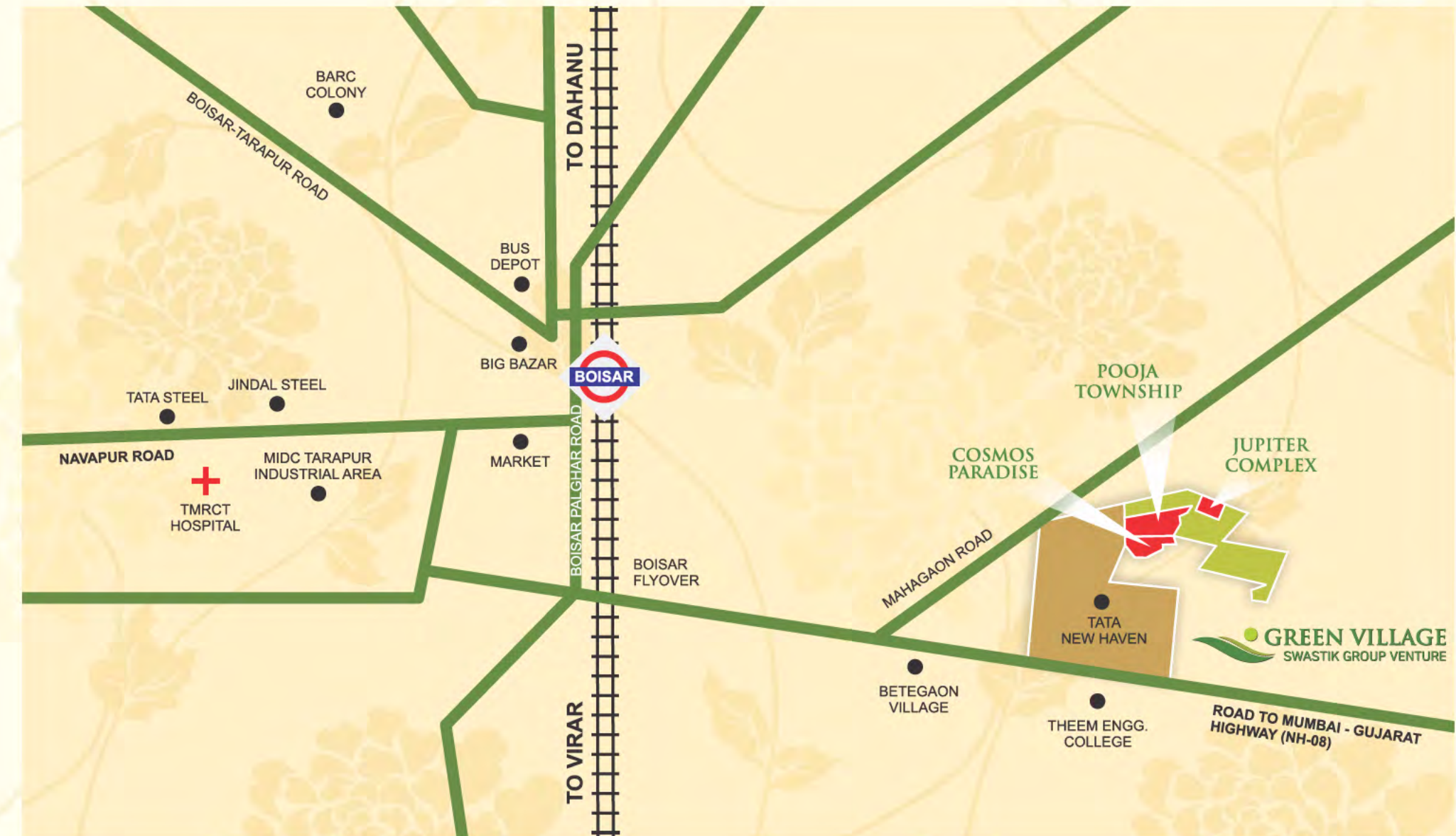
Boisar is a central and most developed node of Palghar District. Abundant with nature and blessed with heavenly hill views. Boisar stands out with ample of open spaces, fresh air, green environs and pollution free atmosphere. The soul soothing lakes just add upto the beauty and make Boisar the most revitalizing heaven to live.

**Inclose proximity to**

- Hospitals
- Schools & Colleges
- Multiplex
- Market for daily utilities
- Banks & ATM's
- Temples

**Attractions in Boisar**

- Chinchini Beach
- Tarapur Fort



**GREEN VILLAGE**  
SWASTIK GROUP VENTURE