

FOR FURTHER INFORMATION CONTACT :
+91 80032 00700, +91 80032 00400, +91 98109 05792
011-45644444

The contents of this brochure are purely conceptual and have no legal binding. The developers reserve the rights to amend the layout, plans, dimensions, elevations, colour schemes, specifications and amenities without any notice or intimation. Subject to Bhiwadi jurisdiction.





I saw the branches of the trees
bend down a touch to meet,
the clover-blossoms in the grass
rise up to kiss my feet,

Here runs the highway to the town;
there the green lane descends,
air runs aplenty here,
on which our life depends

A soft ray kissed my cheek
I looked up to find its source
and there through the scattered clouds
it was the sunshine of course

This is the place, a fairyland indeed,
such a beautiful feeling it gives
this is where I make my abode
because this is where happiness lives



TWO SUNS ON ONE HORIZON

Impossible as it may seem, but when it comes to the developers and promoters of BDI Sunshine City, it stands true. The rising sun is the BDI Group which is the principal developer of BDI Sunshine City. A quarter century old real estate development group, BDI has many successful projects across the country under its belt. BDI believes in providing value-added, value-for-money homes that exceed the customer's expectations. BDI Sunshine City is the group's first endeavor in the Tier III towns as a part of its plan to provide world-class housing options in emerging towns of the country.

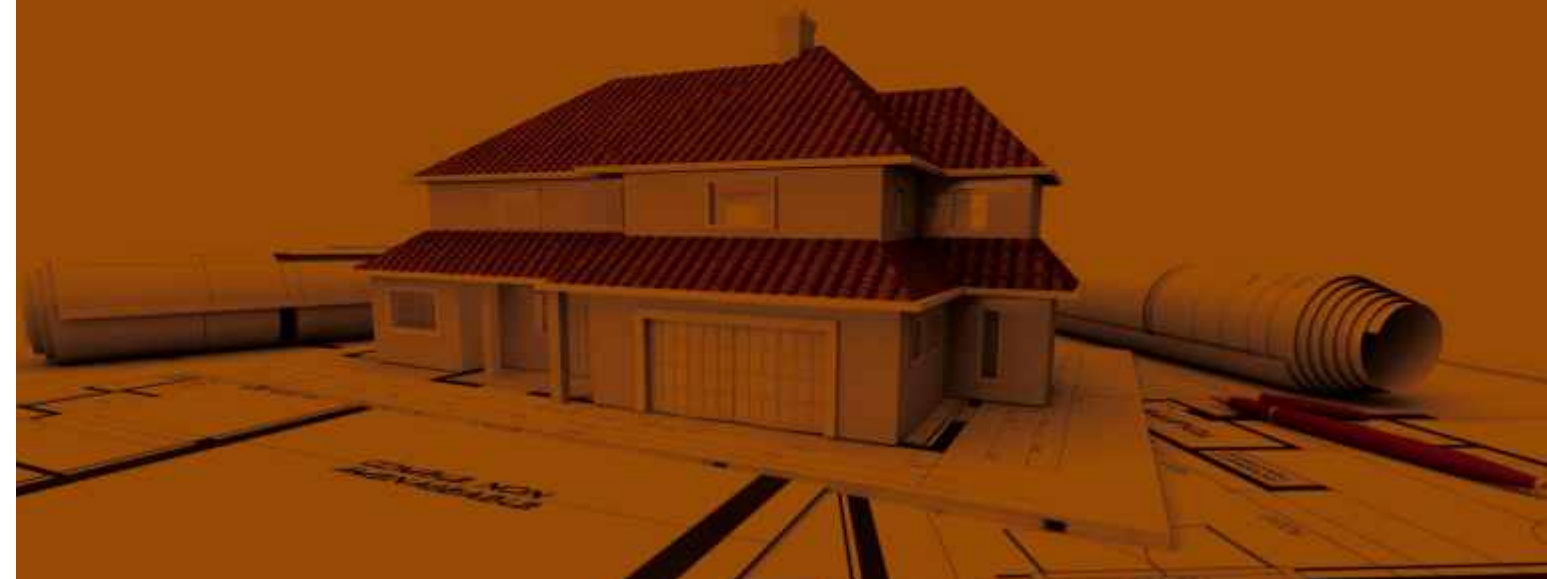
The second sun in the horizon is Bhaskar Group. The largest Hindi media conglomerate of the country is also making a big impact on the real estate scenario of the country. Keeping abreast it's origin, the group is developing and promoting residential, commercial and retail spaces in tier II and emerging towns of the country. The group's recent landmark in Bhopal, DB Mall is already making waves in the retail scenario. Apart from that, the group also has Aditya Avenue Bhopal, DB City Gwalior and Apollo DB City Indore to its credit.





A LINEAGE OF PERFECTION

BDI Group has been building homes for over 25 years now. The group has built and delivered quality homes in Chennai, Bhopal, Ahmedabad and Delhi. On the other hand Dainik Bhaskar Group has a strong presence in the real estate arena. The DB Group has developed one of the largest shopping mall in Central India, the DB Mall. Moreover the group has DB City Gwalior and Apollo DB City Indore to its credit.



Aditya Avenue
SUNRISE OF A NEW LIFESTYLE
Airport Road, Bhopal



Apollo DB City
happy living




DB CITY
BHOPAL



DB CITY
BUILT AROUND PEOPLE
GWALIOR



BHIWADI

NEIGHBOURHOOD

THE LAND OF THE NEW SUNSHINE

Welcome to the sub-continent's third largest industrial hub, welcome to BHIWADI. Located just 40 kms from Gurgaon, 25 kms from Manesar, 70 kms from Delhi, 3 kms from Daruhera and 80 kms from Alwar. To put it simple, you are a stone throw away from everything.

EXISTING COMPANIES IN BHIWADI AND VICINITY

HONDA SCOOTERS	HONDA SIEL
RELAXO	BKT
SHRI CEMENTS	SAINT GOBAIN
SONA KOYO	PEPSI
NAHAR SPINNING	JAQUAR
HERO HONDA	CONTINENTAL ENGINES
UNITED BEVERAGES	KEI
SVR AUTO	CORDS
LIFE LONG	HI-TECH
PERRY WARE	SRF
SAKATA INK	FEDERAL MOGUL
SEIGWORK	SEZ (MAHINDRA)
GILLETTE	SONA
(NOW P&G)	AMTEK
BAUSCH & LOMB	SHRIRAM PISTON

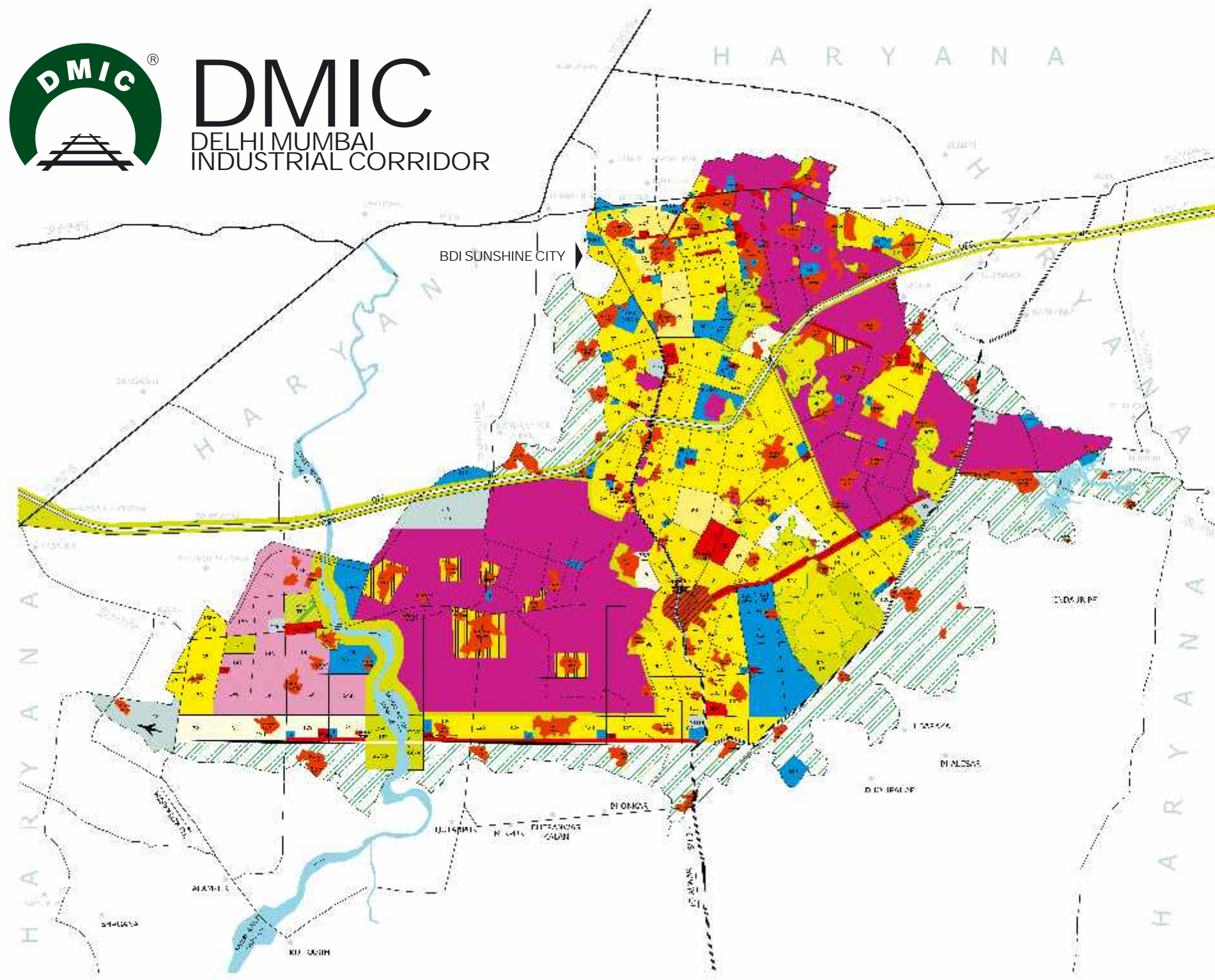
UPCOMING COMPANIES IN BHIWADI AND VICINITY

DR.OETKER
BHARATIMPEX
SPIROTECH
HYTHRO POWER CORPORATION LTD
GEMSCAB CABLES
EURO-AMERICAN PLASTICS
MINDA GROUP
DIPTY LAL JUDGEMAL PVT. LTD.
AMTEK AUTO LTD
SCCI INDIA PVT LTD
SPRINGWEL
HINDWARE
NAVRATAN PIPE & PROFILE LTD
EASTERN POLYCRAFTS INDUSTRIES LTD
MEMBRANCE GROUP

and countless many more prestigious blue chip companies which are already present in the region. The infrastructure in place is also attracting new players to Bhiwadi. Bhiwadi is developing rapidly, with implementation of neo-modernized townships, residential complexes, retail and corporate houses. In other words, Bhiwadi is the new promising land.



ACTUAL PICTURE



BHIWADI-TAPOOKARA-KHUSHKHERA COMPLEX
भिवड़ी-तापूकरा-खुशखेरा कॉम्प्लेक्स
LAND USE PLAN-2031
भू-उपयोग-2031

RESIDENTIAL	UTILITIES
1. HIGH DENSITY RESIDENTIAL 2. MEDIUM DENSITY RESIDENTIAL 3. LOW DENSITY RESIDENTIAL 4. INDUSTRIAL RESIDENTIAL	1. STP 2. WATER TREATMENT PLANT 3. WASTE TREATMENT PLANT 4. ELECTRIC SUB-STATION 5. TRANSPORTATION
5. COMMERCIAL 6. INDUSTRIAL 7. PUBLIC/SEMI PUBLIC 8. RECREATIONAL 9. SPECIAL USES	6. HIGHWAY 7. RAILWAY 8. AIRPORT 9. PORT 10. CANAL 11. DAM 12. TUNNEL 13. BRIDGE 14. FERRY 15. ROCKET LAUNCHER 16. SPACE SHUTTLE 17. SUBMERSIBLE 18. ROBOTIC VEHICLE 19. REMOTE CONTROLLED VEHICLE 20. AUTONOMOUS VEHICLE 21. SELF-DRIVING CAR 22. DRONE 23. ROBOT 24. NANOROBOT 25. MICROBOTS 26. NANOBOTS 27. QUANTUM DOTS 28. QUANTUM WIRE 29. QUANTUM CRYSTAL 30. QUANTUM DOT 31. QUANTUM WIRE 32. QUANTUM CRYSTAL 33. QUANTUM DOT 34. QUANTUM WIRE 35. QUANTUM CRYSTAL 36. QUANTUM DOT 37. QUANTUM WIRE 38. QUANTUM CRYSTAL 39. QUANTUM DOT 40. QUANTUM WIRE 41. QUANTUM CRYSTAL 42. QUANTUM DOT 43. QUANTUM WIRE 44. QUANTUM CRYSTAL 45. QUANTUM DOT 46. QUANTUM WIRE 47. QUANTUM CRYSTAL 48. QUANTUM DOT 49. QUANTUM WIRE 50. QUANTUM CRYSTAL

Scale: 1:100000
Date: 2031
Prepared by: TOWN PLANNING DEPARTMENT, RAJASTHAN



DMIC-DELHI MUMBAI INDUSTRIAL CORRIDOR THE LIFELINE OF GROWTH

A mega project worth INR 90 billion and technically aided by Japan, DMIC is one of the most ambitious infrastructural project of the country. Covering a total of 1480 kms between the national capital and the business capital of the country, DMIC's lifeline would be a Multi Modal High Axle 6 lane Freight Corridor. The vision for DMIC is to create state of the art infrastructure to activate local commerce, enhance foreign investments and attain sustainable development. The corridor would be blessed with exceptional infrastructural facilities like 9 mega industrial zone of approximately 200-250 sq. kms., each covering three ports and six airports through its length. Specific Investment Regions and Industrial Areas have been identified within the corridor to provide transparent and investment friendly facility regimes.

The Rajasthan industrial triplets Khushkhhera, Bhiwadi and Neemrana have been identified as one of the Investment Region, sure to fuel the industrial and infrastructural growth of these towns. The Freight Corridor is slated to intersect the city and would ultimately become the lifeline of the city. This would mean that with more and more foreign investments heading Bhiwadi's way, the demand for quality residential options would be on a constant high, doubling up the promises that already exist in Bhiwadi.





WHERE HAPPINESS LIVES

Spread over 19 acres is this beautiful abode of happiness. Bang on the lifeline of Bhiwadi, the Alwar Bypass, still away from the hustle-bustle and pollution of a state-highway, the township is tucked away in the lap of open green fields all around.

The campus has 7 high-rise blocks offering 2 & 3 BHK housing options. Of these, 4 blocks are already up and house about 250+ happy families. The other 3 towers are under construction and would be finished and delivered soon.

It's not old, it's not new, it's merely a point-of-view. The sun shines every day, spreading warmth, cheer and life just like BDI Sunshine City home, with the first blink of eyes fill your life with happiness. Crafted to perfection by BDI group, which has over twenty five years of experience in sculpting only one thing; homes, and supported by the media conglomerate, The Bhaskar Group, BDI Sunshine City is the ultimate abode you can find in Bhiwadi.



The campus is packed with all amenities that make living in Sunshine City an experience within itself. Right from the biggest club house in Bhiwadi to the all convenient commercial complex, Spectrum, you'd find both convenience and luxury right at your feet.

Apart from this, the campus has 3 beautifully landscaped green zones with 2 kids play zones and water bodies. Not only that, a place of worship is also on cards.

ACTUAL PICTURE





BASK IN THE SUN

Kids running around with joy, a newly wedded couple enjoying a stroll, a fitness enthusiast running laps around the campus. You can see all this, yet there is room for a lot more. We at BDI believe everyone needs space, we respect that, hence BDI Sunshine City has been planned and executed keeping in mind that very need of yours, SPACE.

Its not just the wide open outdoors but also the same design theme is followed within our homes. With enough space for you to have everything that you need (and not) and yet have the feeling that you could add some more. Come stay with us and celebrate our way of living, which is, spacious living.





WHERE THE SUN SHINES BRIGHT

BDI Sunshine City offers the happiest living experience in Bhiwadi. The 19 acres township is surrounded by open green fields on all three sides and touches the Alwar Bypass Road on one.

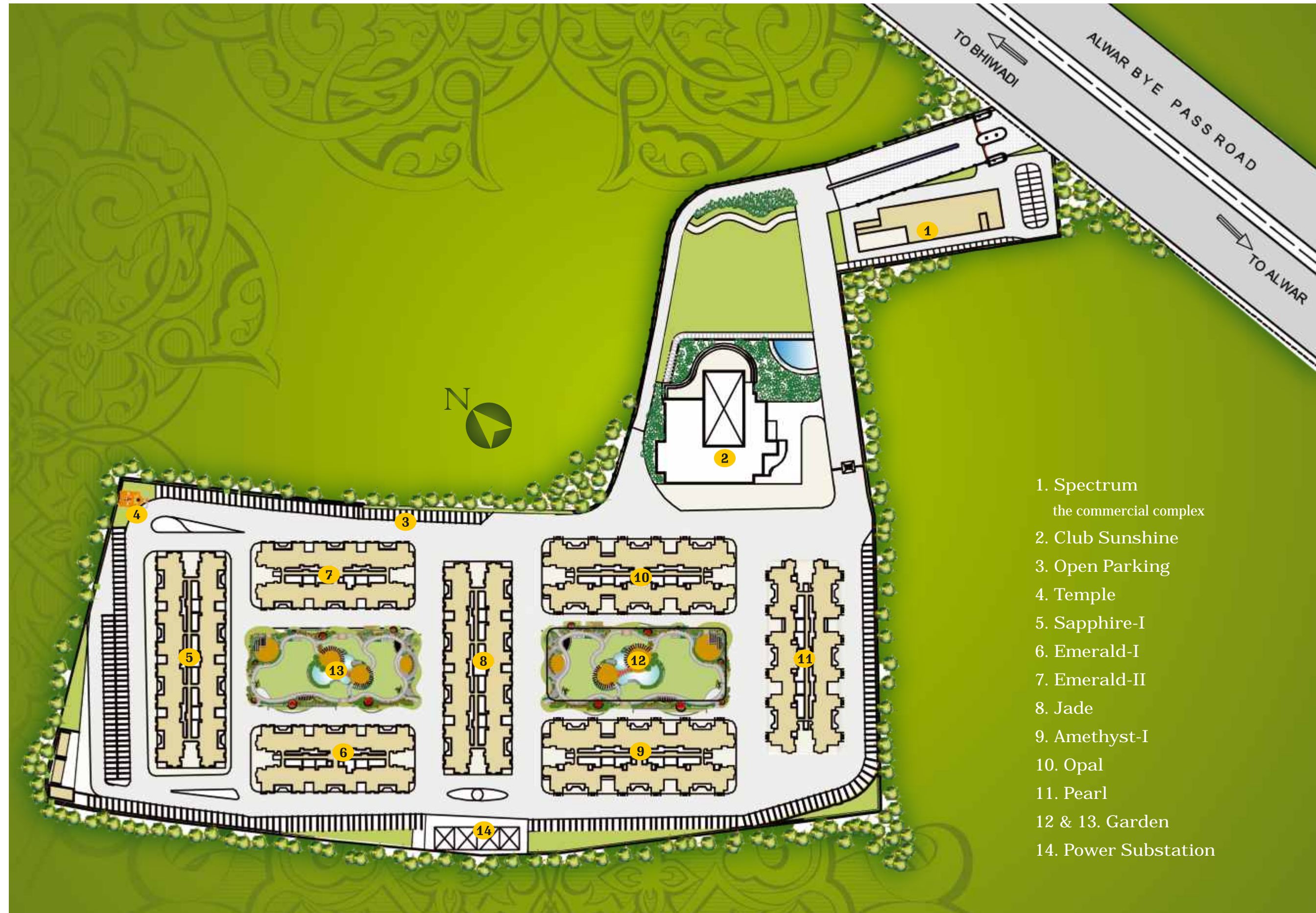
Once on the Alwar Bypass you'll be welcomed by the grand entrance plaza which is guarded 24x7 by our dedicated and alert security staff. And right at the entrance you'd find Spectrum, the commercial complex which is specially built for the resident's convenience.

Move a little further on the wide paved road and you'll be face-to-face with the biggest club house in Bhiwadi; Club Sunshine. The club offers a wide array of recreational facilities for the residents along with a banquet hall, a multi-cuisine restaurant and luxurious guest house.

The entrance to the residential block is again guarded by a security check post, ensuring maximum vigilance and additional security for the residents. The residential compound is divided into 7 high-rise blocks, each offering 2 & 3 BHK housing options to suit your budgets and space requirements.



ACTUAL PICTURE



1. Spectrum
the commercial complex
2. Club Sunshine
3. Open Parking
4. Temple
5. Sapphire-I
6. Emerald-I
7. Emerald-II
8. Jade
9. Amethyst-I
10. Opal
11. Pearl
- 12 & 13. Garden
14. Power Substation



Bhiwadi's
biggest
CLUB

SUNSHINE CLUB

When we say biggest, we're surely not referring to the size of the club house which by default is BIG, we are referring to everything that Club Sunshine holds within. Everything that makes life pleasurable and enjoyable has been accounted for in the design of Club Sunshine. Right from a well equipped gymnasium to the swimming pool and toddler pool to the salon and sauna, we've ensured that all your health and relaxation needs are met with. We also have enough room for recreation; rather we have three of them. Our card/ chess/ carrom room, table tennis room and the billiards room provide all essential recreation you need, after a hard day's work.

And if you are one of those who want to entertain and need to be entertained, we have a lounge, a bar and a multi-cuisine restaurant serving fine dining on a platter. It doesn't end here; our banquet hall and 18 luxurious guest rooms would ensure that your family functions and get-togethers leave a lasting imprint on your guest's minds.

We've made it BIG, we sure did, yet the best thing about Club Sunshine is that you can do all that you want and yet you will never leave home, you will never leave Sunshine City. It's not just the club house of ours that is tempting; we have other amenities to make your stay luxurious:

BANQUET HALL | SWIMMING POOL / CHILDREN POOL
KIDS ZONE | CARDS/CHESS/ CARROM ROOM
LOUNGE | BAR | RESTAURANT
SALON | STEAM & SAUNA | TABLE TENNIS
BILLIARDS | GYMNASIUM | 18 GUEST ROOMS



THE SPECTRUM OF THE SUNSHINE

Joy of life is made up of many things; it might be where you live, how you live, what you do, how you are entertained and doing things that make you happy. For some it may be the simple joy of shopping, for some it could be indulging in their favourite cuisine and tantalizing their taste-buds, for some a comfortable hour spent at the salon and then there are the exceptional few who would love to do all of these. Spectrum, the commercial plaza in BDI Sunshine City is made of these very small joys. Offering thoughtfully designed retail, service and office spaces as well as spacious studio apartments, Spectrum presents a full gamut of joyous experiences of living, working, indulgence and lifestyle.



THE GEMS OF SUNSHINE CITY

Opal shows a variable interplay of internal colors. The most striking quality of opal is its ability to refract and reflect specific wavelengths of light. Something like the colours of our life. This gem of gems embodies emotional, spiritual, healing and medical properties.



Blue is the color of sympathy and harmony, friendship and loyalty; and blue is the colour of the Sapphire. It's beauty, it's magnificent colours, it's transparency, & also it's durability are qualities associated with this gemstone.



Pearls are very alluring and hold a quality which defines both - its elegance & natural beauty. The finest quality natural pearls have been highly valued as gemstones and objects of beauty for many centuries, and because of this, the word pearl has become a metaphor for something very rare, fine, admirable & valuable.



Jade - a gemstone of unique symbolic energy and unique in the myths that surround it. With its beauty and wide-ranging expressiveness, jade has held a special attraction for mankind for thousands of years.



Amethyst's colour is as unique as its seductiveness, though this gemstone of all gemstones is said to protect its possessor against seduction. Apart from these powers, gemstone therapists say that the amethyst has a sobering and cleansing effect.



Emeralds are fascinating gemstones. Fine emeralds are even more valuable than diamonds. Emeralds have been held in high esteem since ancient times. The green of the emerald is the colour of life and the springtime, but it has also, for centuries, been the colour of beauty & everlasting love.



SUNSHINE WHERE HAPPINESS LIVES