

LIVING UP  
TO YOUR  
ASPIRATIONS.

What makes us distinct at Tetra Grand Constructions is the fact that we are always keen to know your better, understand your needs and requirements in good proportions. We are constantly trying to live your life with you, stepping into time you spend at home. Because when we build a home, we want you to aspire for it. We want the world to acknowledge where you live. We want the homes we make to be an aspiration. And that – is really our greatest aspiration too.

ONGOING PROJECTS



GREEN APPLE



GREEN PLANET



GREEN PRIDE

Promoters



# 910, 9th Main, 3rd Cross, Kalyan Nagar, 1st Block, HRBR Layout,  
Bangalore 43. Ph: 99001 98549, 98451 88229  
email: tetragrand@yahoo.co.in www.tetragrand.com

Architectural Consultants

**n i s t a l a**  
architecture engineering  
Venkateswara Colony, Narayanaguda, Hyd.

Structure

**A.R.K. Consultants**  
Nanal Nagar, Hyderabad - 500 028.

Project Consultants

**Essarke Associates**  
D. No. 1-15-7/1, Ramalayam Street,  
Sriram Nagar, Bhanugudi Junction, Kakinada.

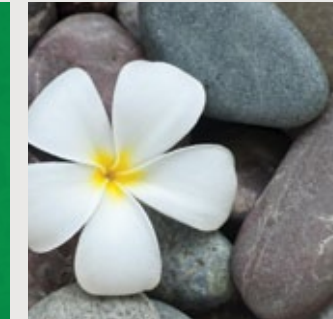
NOTE : This brochure is only a conceptual presentation of the project and not a legal offering. The promoters reserve the right to make changes in plans, specifications and elevation as deemed fit.

Artiffee +91 9885253570

A Project by



WHERE LIFE  
COMPLEMENTS  
YOUR ASPIRATIONS.



2 & 3 BHK Luxury apartments

@ Chokkanahalli, Thanisandra Main Road, Bangalore





BUILT TO  
MATCH THE LIFE  
OF HIGH-FLIERS.



The pleasure of a home comes alive only when it is lived out completely. When every room echoes with tunes that make the expectations of life happier. When every footstep of the little ones inside sound like a jingle. And when a bunch of young mischief makers come in and turn emptiness into a song that reverberates forever.



Aerial View



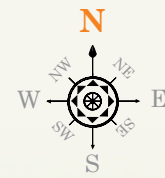




SET FOOT TO  
A VIEW YOU'LL  
 GET DELIGHTED BY.

Moving up the ladder of life comes with its own set of rewards. And what can be the most supreme one than owning a home the door of which opens up to greens and a view of the nature. At Green Aspire, every home on the ground floor presents the residents with greenery of their own, gifting with the delight of waking up to pleasant mornings and moonlit evenings. So get set to a view that'll charm you.

Master Plan



**LEGEND:**

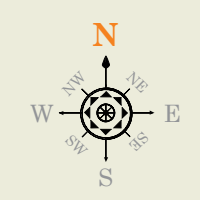
- |                   |                      |                      |                             |
|-------------------|----------------------|----------------------|-----------------------------|
| 1) Entry / Exit   | 5) Deck area         | 11) Association Hall | 17) Senior Citizens' Lounge |
| 2) Security       | 6) Jogging track     | 12) Kids' Play Area  | 18) Snooker Room            |
| 3) Toddlers' Pool | 7) Yoga / Meditation | 13) Landscape Garden | 19) Indoor Games            |
| 4) Swimming Pool  | 8) Gymnasium         | 14) Amphitheatre     | 20) Transformer Yard        |
|                   | 9) Badminton Court   | 15) Wash Area        |                             |
|                   | 10) Table Tennis     | 16) Library Room     |                             |







THERE'S  
ALWAYS MORE  
TO PRIDE IN, HERE.



3 BHK 3D VIEW (WEST FACING)  
FLAT No. 7



A Block & B Block | Ground Floor Plan



ROAD

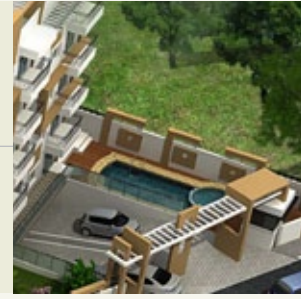
ROAD





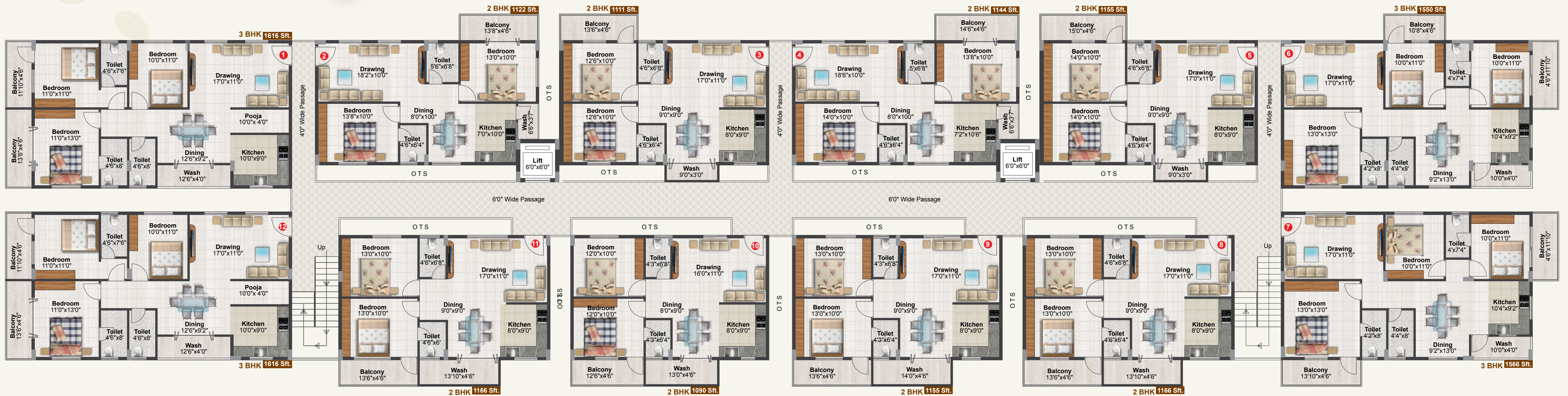
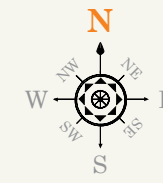
3 BHK 3D VIEW (EAST FACING)  
FLAT No. 1 & 12

CELEBRATE WHERE  
YOU'VE ARRIVED  
IN LIFE.



2 BHK 3D VIEW (NORTH FACING)  
FLAT No. 8, 9, 10, 11.

A Block & B Block | Typical Floor Plan



ROAD

ROAD





DESIGNED  
TO CAPTIVATE  
THE WORLD.



If impressive looks and captivating design are the criteria for you to choose a home, Green Aspire will score really high in your favour. Simple, elegant, classy, the architecture of the community will have you spellbound. After all, when the world comes to meet you, you should be honestly proud of where you live, while the world aspires to live like you.



Front View





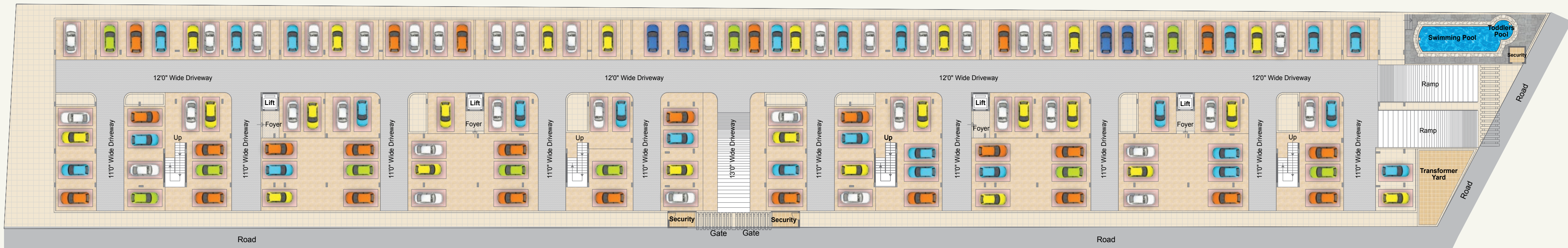


A PARKING  
 THAT FEELS MORE  
 LIKE A PARK.



At Green Aspire, we've looked into one of the most vital concerns that you as a resident are likely to be having – that of parking. We've gone all the distance to make sure that driving in and driving out of this marvelous residential community is never a hassle for you. Which is why we've created parking for several cars and two-wheelers. And most importantly, we've provided with a spacious driveway that'll make you feel like you're travelling through breeze.

A Block & B Block | Parking Plan





ENJOY LUXURY,  
LEISURE AND  
LIFE ON TOP.



## Amenities & Features

- Swimming Pool
- Toddlers' Pool
- Association Hall
- Gymnasium
- Badminton Court
- Snooker Room
- Kids' Play Area
- Landscape Garden
- Amphitheater
- Yoga / Meditation
- Library Room
- Jogging Track
- Wi-Fi Provision
- Centralized DTH
- Senior Citizens' Lounge
- Indoor Games
- Table Tennis
- Video Surveillance
- 24 x 7 Security
- Intercom
- Solar Hot Water
- Power Back-up
- Individual Flats
- Designed as per Vaastu
- Strategic Location
- 24-hour Water Supply
- Ample Car Parking
- 6-Passenger Automatic Lifts

### Block - A 3D VIEW Terrace Floor Plan

- Association Hall
- Table Tennis
- Amphitheatre
- Wash Area
- Library Room



Once you've made a home at Green Aspire all yours forever, go ahead and tell the world with all the pride and at the top of your voice, that your home comes with a terrace you can make the most of. There are many features of convenience it comes with: a room for your daily yoga sessions, a room that's dedicated to club games like snooker and pool, a stage for performances, space for indoor games, a place for snacking and dining, along with a lot more other options you may wish to pursue.

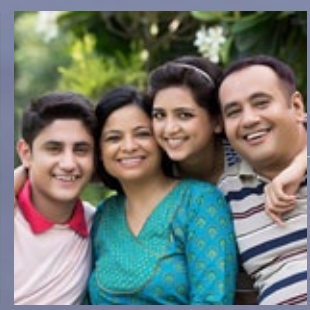


### Block - B 3D VIEW Terrace Floor Plan

- Gymnasium
- Yoga / Meditation
- Snooker Room
- Wash Area
- Indoor Games







LOOKS GRAND,  
TO MAKE YOU  
FEEL GREAT.

Grandness to a place comes from many factors. From the way it is designed to the way it is executed and down to every detail. The team behind Green Aspire – the architects, the designers, the builders – have put in a lot of effort to ensure that what you belong to is a home that you feel really proud of, extremely elated to live in, and one that creates the most fruitful experiences of your life and fulfills your aspiration.



Night View





### STRUCTURE

R.C.C. Framed Structure with M - 20 Grade Concrete, Fe 500 Grade TMT steel.



### WALLS

External Walls with 6" Solid Concrete Blocks. Internal Walls with 4" Solid Concrete Blocks.



### PLASTERING

External walls with double coat sponge finish. Internal walls smoothly plastered with lime rendering.



### FLOORING

24"x24" Polished Vitrified tiles with 4" skirting of reputed brand for hall, Dining, Kitchen and Bedrooms. 12"x12" Ceramic tile flooring for balconies and utility.



### DOORS & WINDOWS

Teak wood door frame for Main door and Designer molded BST shutters with brass fittings. All internal doors in sal wood frames with designer molded skin shutters with powder coated Aluminum fittings.

Windows : UPVC Powder coated 3 track windows with mosquito mesh and safety grills.



### PAINTING

Interior – Plastic Emulsion over putty for internal walls, polish for Main Door, Enamel Paint for other Doors and Steel Grills.

Exterior – Acrylic emulsion paint. Textured / Cladding surfaces in selective places.



### PLUMBING

Ashirwad / Astral Flow Guard CPVC Plumbing System.



### KITCHEN

Kitchen Platform with 20 MM Granite Top and Stainless Steel sink. Glazed Tiles dado up to 2' height above platform.



### ELECTRICALS

Concealed Copper wiring of Anchor or Havells make with branded modular switches or equivalent.



### COMMUNICATION

Individual Telephone, T.V. Points in Living Rooms and All Bedrooms.



### VIDEO SURVEILLANCE SYSTEM

Comprehensive security system with motion sensor cameras in common areas.



### INTERCOM

Amongst All Flats and Security cabin. Lifts with emergency phone facility to security cabin.



### LIFTS

4 No.s of Automatic 6 Passenger lifts of Kone or reputed make.



### GENERATOR

Standby Generator for Lifts, Motor Pumps and Common Areas with 1 K.V.A back-up for each flat.



### COMMON AREAS

Sadarahalli Granite Flooring for common area and staircase.



AN ABODE

COMPLEMENTED BY STANDARDS.

SPECIFICATIONS



### TOILETS

Anti-Skid Ceramic Tile Flooring with Glazed Tile Dado up to 7' height with White Colour Parryware / Hindware or equivalent make EWC and wash basin.



### WATER SUPPLY

Adequate usage water supply through Bore wells. Kaveri water connection provision in Kitchen only.



Location Map

## WHERE NOTHING IN LIFE IS REALLY AWAY.

A home at Green Aspire will have you located in Chokkanahalli, Thanisandra Main Road, one of Bengaluru's most emerging residential localities, that is also close to top IT corporate and other business centres. Besides work, what will remain close to you are life's essentials like healthcare, entertainment, leisure, recreation, education centres, financial institutions like bank and so on. And at a little distance from here are also the Jakkur Lake and the Jakkur Flying Club – two fantastic places of recreation.



Tetra Grand's **green aspire**  
So different, so rare

### Proximity

- Manyata Tech Park (Back Gate) - 4.2 Km
- Sobha City - 1.2 Km
- Bharatiya City - 2.4 Km
- Trinity Nursing home - 1.9 Km
- Diana School & College - 1.8 Km
- Rashtrrothana Vidya Kendra - 2.0 Km
- Federal Public School - 2.3 Km
- Delhi Public School North - 8.3 Km
- EURO School - 7.2 km
- Karnataka College - 2.2 Km
- KNS Institute of Technology - 2.4 Km
- Manipal Academy - 2.2 Km
- Reva Institute of Science - 5.8 Km
- Yelahanka Railway Station - 6.5 Km
- Telecom Layout - 2.8 km
- Ring Road - 5.4 Km
- Hebbal Fly Over - 9.0 km
- MG Road - 14.2 Km
- Bengaluru International Airport - 22.0 Km



Promoters

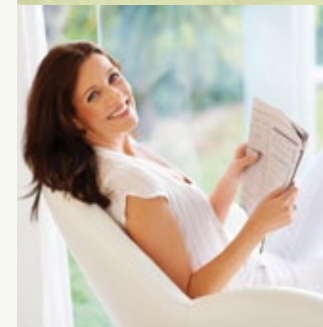


# 910, 9th Main, 3rd Cross, Kalyan Nagar, 1st Block, HRBR Layout,  
Bangalore 43. Ph: 99001 98549, 98451 88229  
email: tetragrand@yahoo.co.in www.tetragrand.com

A Project by



READY  
FOR SOARING  
ASPIRATIONS?



# Tetra Grand's green aspire

So different, so rare



2 & 3 BHK Luxury apartments @ Chokkanahalli, Thanisandra Main Road, Bangalore