

SkyLine  
SAPPHIRE



Come to where City

Living Engulfs You







## The Project

Designed to nurture family living in a secure environment, Skyline Sapphire offers apartments, with the freedom to grow and flourish in a thriving neighbourhood. Skyline Sapphire evokes charm and character. Situated in the heart of Kolkata's most sought after localities, Skyline Sapphire boasts of Metro Rail connectivity and is also conveniently located close to major schools, colleges, offices, hospitals and malls.





## Amenities & Facilities

Skyline Sapphire is dotted with amenities that are both practical and functional. One can enjoy the benefits of gated community living while residing at Skyline Sapphire.

- ◆ CCTV at entry points
- ◆ Intercom in each flat
- ◆ Iron Filtration Plant
- ◆ Fire Fighting system
- ◆ 24hr Water Supply
- ◆ 24hr Security
- ◆ Generator\*
- ◆ Lift
- ◆ Car Parking Space\*

\*at extra cost

## Technical Specifications

Skyline Sapphire is set to meet the desires of the discerning. The 2 & 3 bedroom apartments are sure to make you feel pampered. Bestowed with all modern conveniences these homes boost the aura of living by themselves.

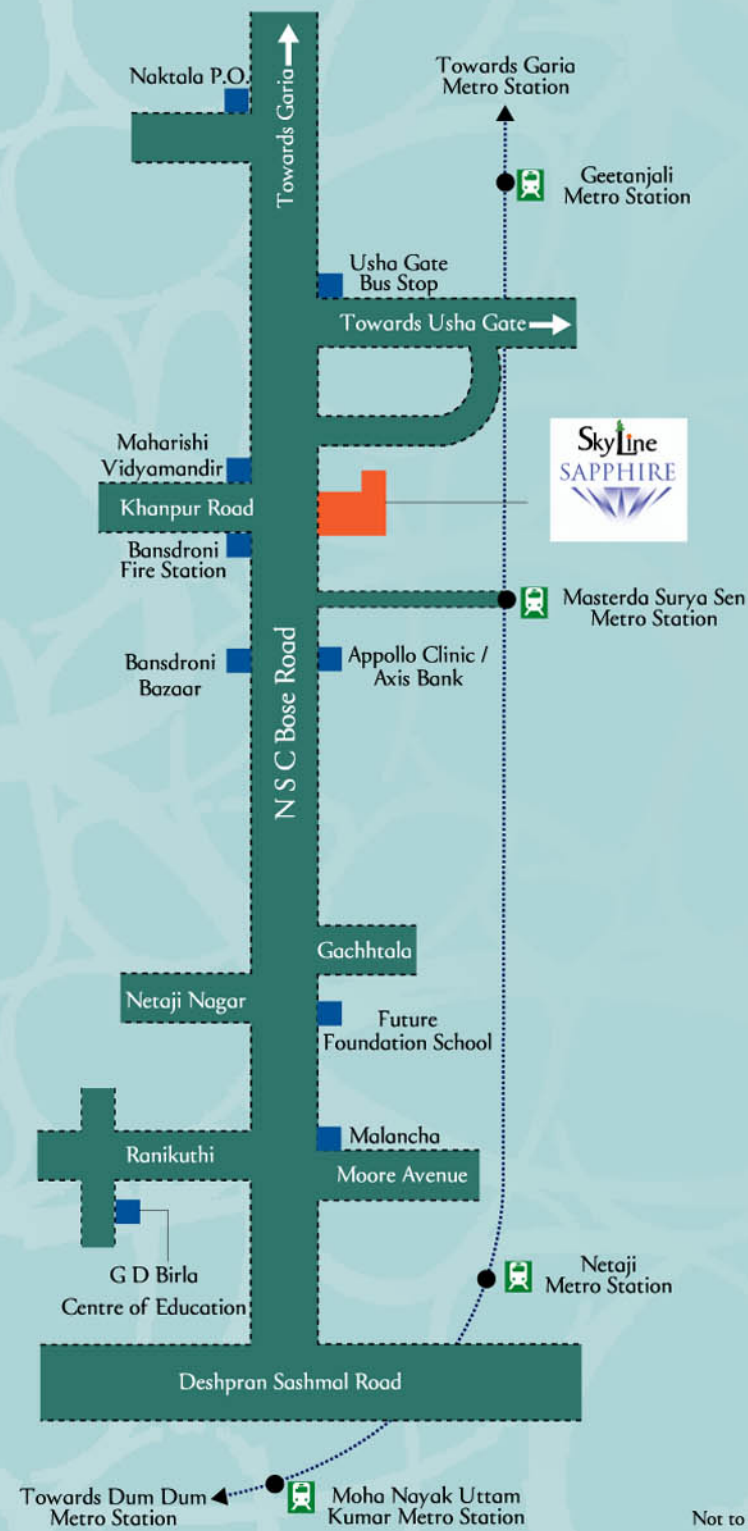
- ◆ STRUCTURE R.C.C. Structure.
- ◆ WALLS Plaster of Paris finish.
- ◆ WINDOWS Aluminium sliding (without grill) with provision for exhaust in toilets.
- ◆ DOORS All flush doors. Main door will have one side polished teak ply with Godrej lock / equivalent, handle, eye piece, tower bolt. Bedroom doors with mortise lock / equivalent, handle, buffer and tower bolt. All doors will be finished with white enamel paint.
- ◆ FLOORING Vitrified tiles in living / dining area and in bedrooms.
- ◆ KITCHEN Cooking platform will have black granite top. Stainless steel sink & ceramic tiles 24" above platform. Flooring of anti-skid tiles. Provision for water filter.
- ◆ TOILETS Concealed pipelines. Only attached toilet will have hot & cold water arrangement. White sanitary fittings of Hindware / equivalent. C.P. fittings of Jaquar / equivalent. Flooring of anti-skid tiles.
- ◆ ELECTRIC Concealed copper wiring with Modular switches. AC point in one bedroom. T.V. & Telephone point in living / dining space and master bedroom. Exhaust fan points in toilets and kitchen. Geyser point in attached toilet.





# Locational Gem

Metro-rail connectivity through Masterda Surya Sen station, a renowned school like Future Foundation School, G D Birla Centre of Education, Appollo Clinic, Bansdrone Bazaar, are just a few landmarks that make Skyline Sapphire a true locational gem.



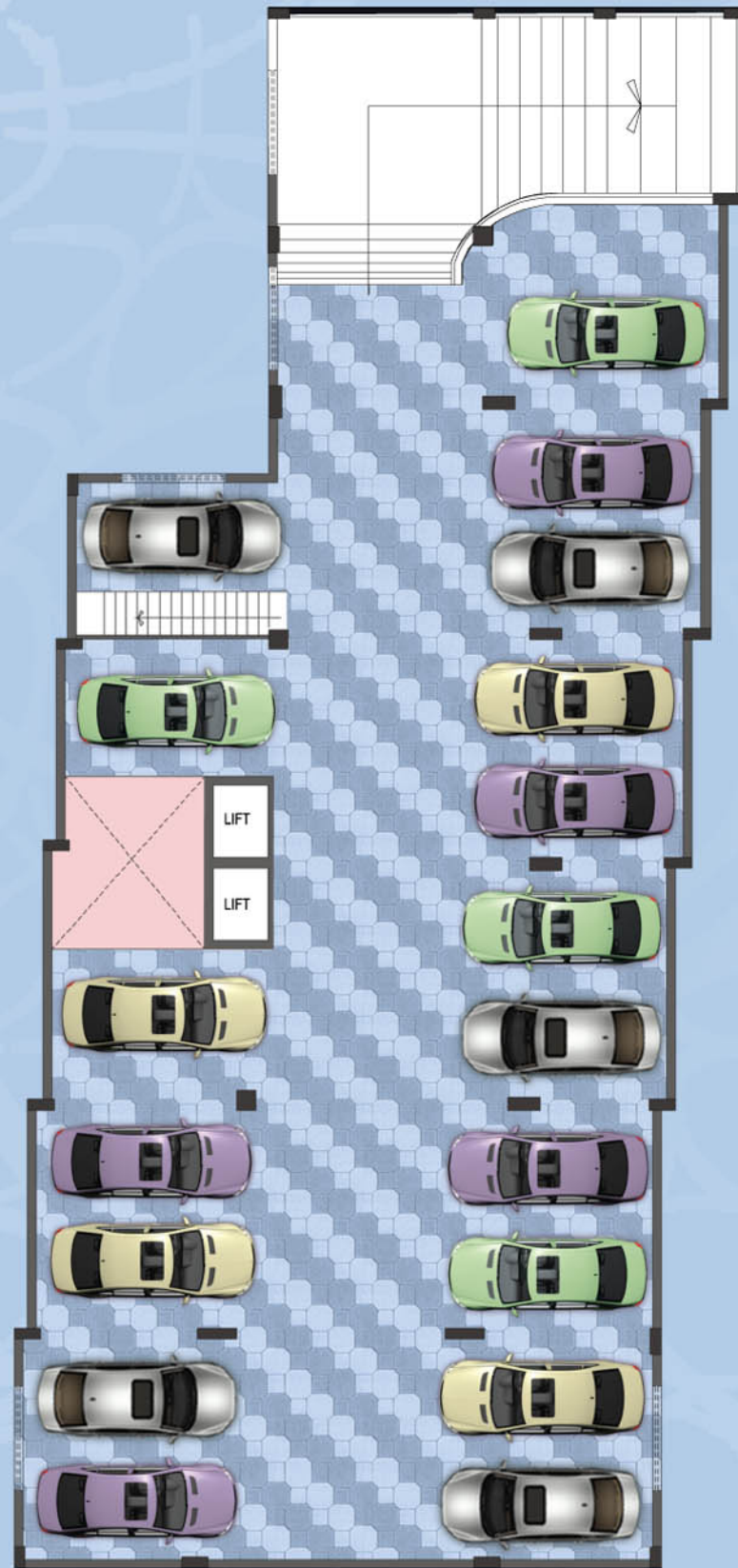
## Ground Floor Plan





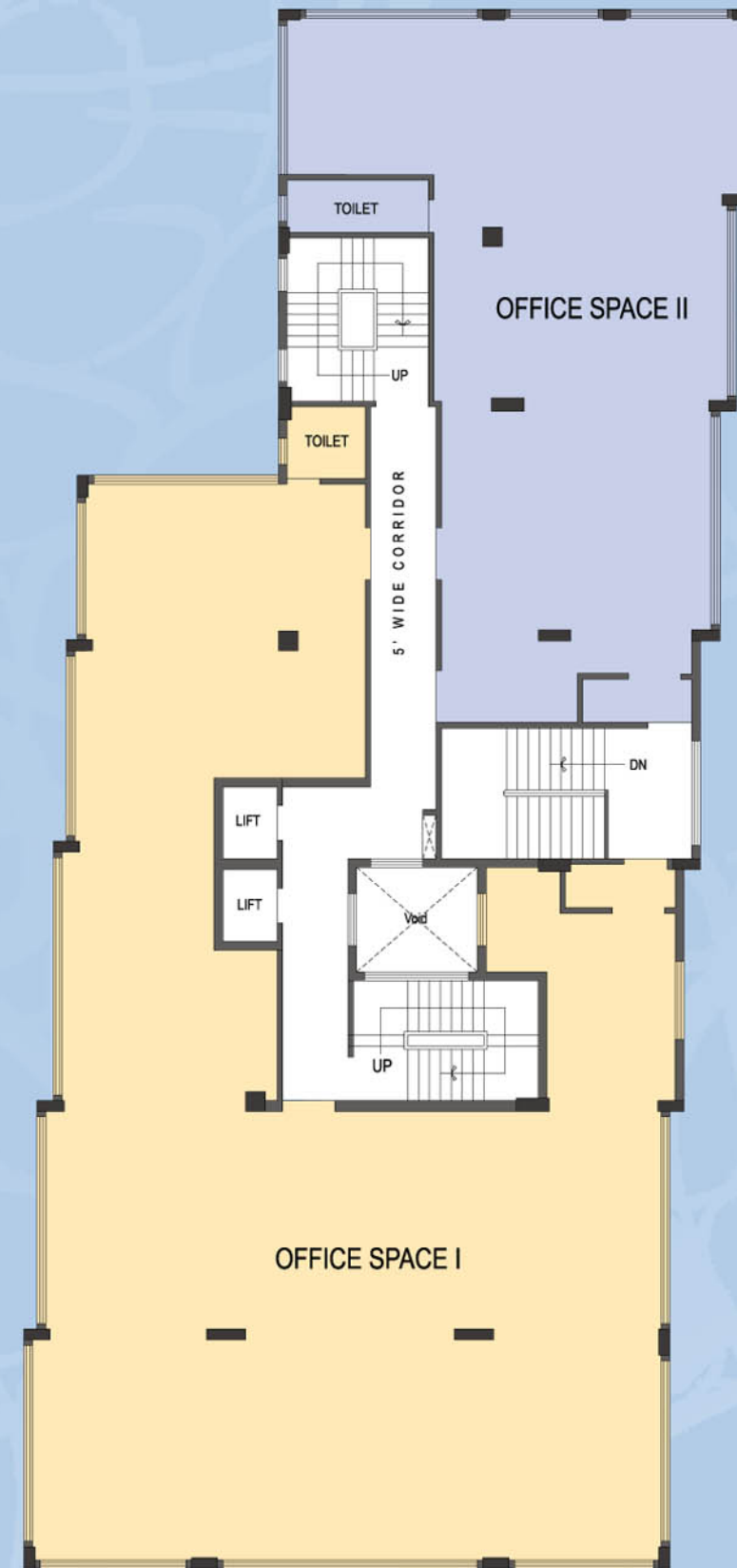
# B

asement Floor Plan



# F

irst Floor Plan



# Second to Fourth Floor Plan



FLAT NO.	FLAT TYPE	SUPER BUILT-UP
A	3 BHK	1315 SFT.
B	2 BHK	994 SFT.
C	2 BHK	933 SFT.
D	3 BHK	1416 SFT.
E	3 BHK	1410 SFT.

# Fifth Floor Plan





## The Developers

**SKYLINE GROUP** is a name synonymous with creating state-of-the-art living and business spaces across Kolkata. With over two decades of promoting expertise in their repertoire the group has successfully completed more than 20 projects providing homes to more than 1100 families.

**SKYLINE GROUP** has an array of projects lined up for the future which will be home to a number of families who yearn for quality living.

Developer:



**Ambey Nirman Pvt. Ltd.**

**Registered Office:**

32, Ezra Street, 11th Floor, Kolkata-700 001

**Corporate Office:**

2, Iswar Ganguly Steet, Kolkata-700 026

**T:** 033 4008 1058, **M:** 99038 34098

**E:** skylinesapphire@yahoo.com

**W:** www.skylineprojects.in



**Skyline Lakeview**, Laskarpur, Garia



**Skyline Mansion**, James Long Sarani



**Skyline Apartments**, Parnashree, Behala



**Skyline Harmony**, Fartabad, Garia



**Skyline Residency**, Hindusthan More, Garia

Architect & Engineers:

**SGA CONSULTANCY SERVICES**

architects \* engineers \* planners  
'Gunjan', 1st Floor, P-17, Mitra Colony,  
James Long Sarani, Kolkata - 700 034

**Tel.:** 033 2447 1093 / 2407 4948

**Email:** sga\_cs@yahoo.com

