



Shuvam Construction (P) Ltd.

Plot No. : 564, Vivekanand Marg, In front of Ramkrishana Matha,
Bhubaneswar - 751002
Ph: 0674-2432946, Telefax: 0674-2435537
Mob: 9437022693, 9437300768
E-Mail : shuvamconstruction@yahoo.co.in
Web Site : www.shuvamconstruction.com
(A Member of REDA)

Architect

R & P ASSOCIATES

491/2, Sahid Nagar, Bhubaneswar-4
Tel: +91 9437008609, www.rpassociates.in

Design & Printing
E.A. SHUKLA 9908740841

Shuvam Royale

...Dream to Reality...



Note - The brochure is not a legal document. It has been produced for the general promotion of the development and for no other purpose. All information contained in this brochure is taken from design intent material and may be subject to further design development. These details do not form any part of any contract and while every effort has been made to ensure their accuracy, this cannot be guaranteed and intending purchasers should not rely on them as statements or representations of facts.

Company profile

M/s. Shuvam Construction (P) Ltd. a company incorporated with Registrar of Companies, Cuttack, Odisha, in the financial year 1999-2000 bearing registration no-15-05-644 with the main object of construction of residential flats as well as commercial space and accommodation, in its memorandum of association. Its operation is controlled from the registered office situated at plot no-664, Vivekanand Marg, Bhubaneswar. The business activity of the company is confined to the capital city of Bhubaneswar. Since its inception it has completed 12 (Twelve) projects at prime residential locations within a very short span of 12 years.

M/s. Shuvam Construction (P) Ltd. is an associate of qualified, experienced & dynamic personnel committed to deliver a never before satisfaction to its customers in Real Estate.

The company has already become the axiom of trust, created a place in the heart of the people with their ideas, hardwork, sincerity, conceptualization & the ability to visualize the scope. Bhubaneswar is way ahead of other growing cities of the state, having the privilege to be the Capital of Odisha.

They are renowned for their experience in developing residential layouts which are completed in all respects by providing all infrastructure facilities & obtaining due approvals from the appropriate authorities. The projects are also verified by a panel of legal advisors to give a litigation free property to its clients.

M/s. Shuvam Construction (P) Ltd. has established its good market position & name with completed projects at prime localities with more than 5 lacs Sqft of construction till date, details are as noted below:

S.no	Completed Project	Location
1.	Parvati Villa	Lewis Road
2.	Swastik Enclave	Vivekananda Marg
3.	Biswanath Enclave	Vivekananda Marg
4.	Khemlata Palace	Vivekananda Marg
5.	Ashutosh Vihar	Rabi Talkies Road
6.	Rama Bhramar Palace	Cuttack Road
7.	The Royal Residency	Forest Park
8.	The Royal Enclave	Chandrasekharpur
9.	RajKishore Villa	SastriNagar
10.	The Royal Homes	Vivekananda Marg
11.	Shuvam Construction Office –Commercial	Vivekananda Marg
12.	Kalpataru Residency	Surya Nagar

S.no	On Going Project	Location
1.	Shuvam Residency – Phase (I, II & III)	Patia
2.	Shuvam Homes	Patrapada
3.	Shuvam Daitari Enclave	Prasanti Vihar

S.no	Up Coming Project	Location
1.	Shuvam Plaza(Commercial)	Ashoknagar
2.	(Name to be decided)	Rasulgarh

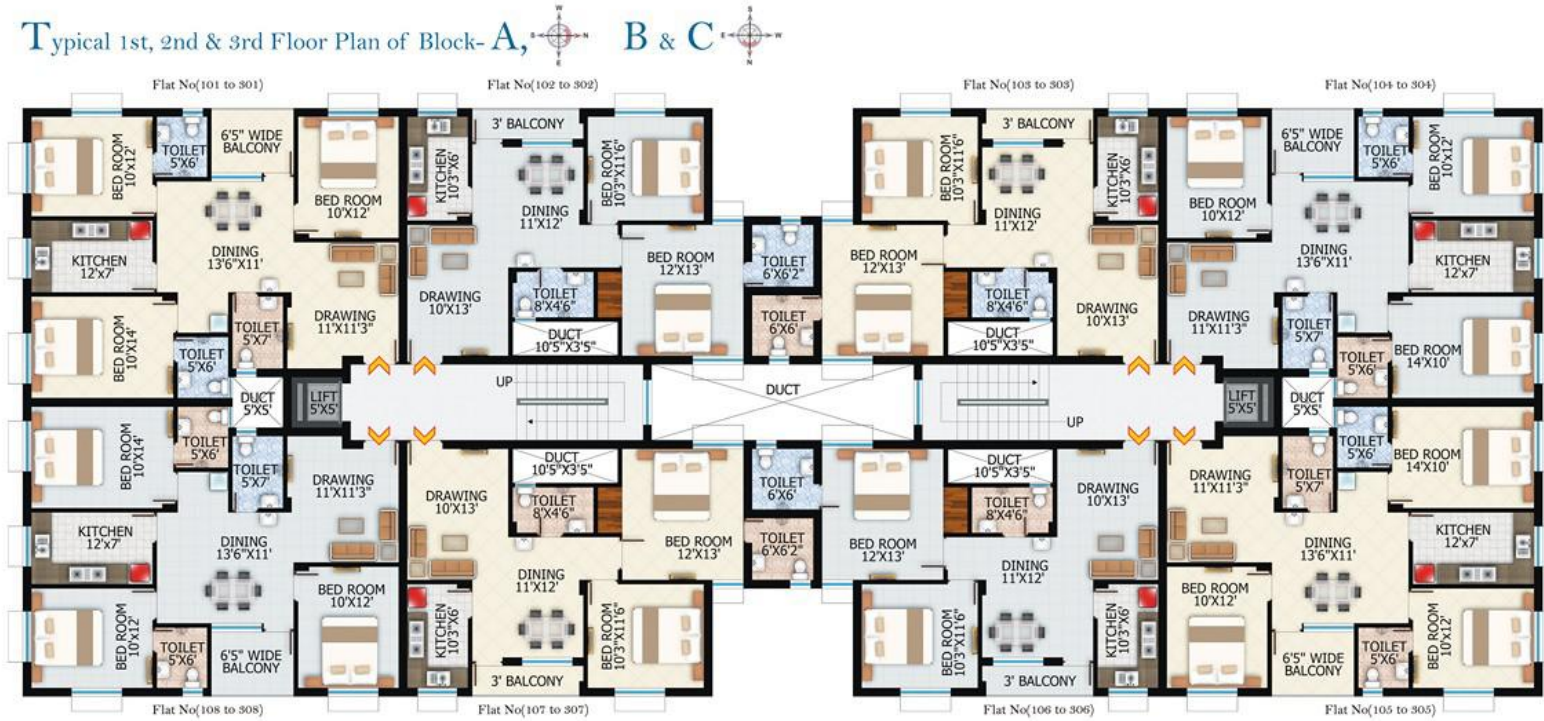
Master Plan



Is a conclave of alike upper-crest lifestyles, background & culture. An avenue of emotions. A participant in cheer. A cradle of happiness



Typical 1st, 2nd & 3rd Floor Plan of Block-A, B & C



Area Statement Block A

Flat No	(S.B.A)	Flat type
101, 201, 301, 401	1422 Sqft	(3BHK)
102, 202, 302	1141 Sqft	(2BHK)
103, 203, 303, 403	1141 Sqft	(2BHK)
104, 204, 304, 404	1422 Sqft	(3BHK)
105, 205, 305, 405	1422 Sqft	(3BHK)
106, 206, 306	1141 Sqft	(2BHK)
107, 207, 307, 407	1141 Sqft	(2BHK)
108, 208, 308, 408	1422 Sqft	(3BHK)

Area Statement Block B

Flat No	(S.B.A)	Flat type
101, 201, 301, 401	1422 Sqft	(3BHK)
102, 202, 302	1141 Sqft	(2BHK)
103, 203, 303, 403	1141 Sqft	(2BHK)
104, 204, 304, 404	1422 Sqft	(3BHK)
105, 205, 305, 405	1422 Sqft	(3BHK)
106, 206, 306	1141 Sqft	(2BHK)
107, 207, 307, 407	1141 Sqft	(2BHK)
108, 208, 308, 408	1422 Sqft	(3BHK)

Area Statement Block C

Flat No	(S.B.A)	Flat type
101, 201, 301, 401	1422 Sqft	(3BHK)
102, 202, 302	1141 Sqft	(2BHK)
103, 203, 303, 403	1141 Sqft	(2BHK)
104, 204, 304, 404	1422 Sqft	(3BHK)
105, 205, 305, 405	1422 Sqft	(3BHK)
106, 206, 306	1141 Sqft	(2BHK)
107, 207, 307, 407	1141 Sqft	(2BHK)
108, 208, 308, 408	1422 Sqft	(3BHK)

4th Floor Plan of Block A, B & C



Typical 1st, 2nd & 3rd Floor Plan of Block D



Area Statement Block D

Flat No	(S.B.A)	Flat type
101, 201, 301, 401	1680 Sqft	(3BHK)
102, 202, 302	1256 Sqft	(2BHK)
103, 203, 303, 403	1562 Sqft	(3BHK)
104, 204, 304,	1234 Sqft	(2BHK)
105, 205, 305, 405	1326 Sqft	(2BHK)
106, 206, 306, 406	1746 Sqft	(3BHK)
107, 207, 307, 407	1771 Sqft	(3BHK)



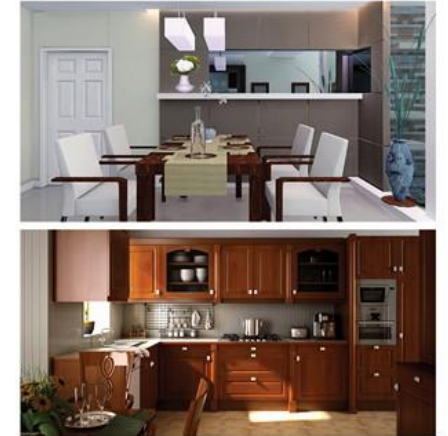
4 Floor Plan of Block D



Typical 1st, 2nd & 3rd Floor Plan of Block E



4th Floor Plan of Block E



Construction Specification

- Foundation:**
R.C.C framed structure.
- Flooring:**
Vitrified flooring with 4" Skirting.
- Kitchen:**
Granite platform with stainless steel sink. Glazed tiles up to 2ft height over platform.
- Doors:**
Flush doors with sal wood frame.
- Window:**
Aluminium sliding windows with M.S. grill.
- Lighting:**
Concealed wiring network with Modular electric switches.
- Toilet:**
Tile flooring, Glazed tiles up to 6' height & Geyser point in toilets.
- Walls:**
8" exterior and 5" interior walls with Fly Ash bricks with cement paint on the exteriors and two coat of Putty and colour Distemper on the interior of flats.

Payment Structure

- Initial booking amount 10% of the flat cost. :30%
- 1st Instalment within 15 days of allotment & on or before execution of sale agreement (-less Booking amount) :25%
- 2nd Instalment on completion of slab casting of respective floor. :25%
- 3rd Instalment on completion of brick work of respective Flat. :25%
- 4th Instalment on completion of Flooring of respective Flat. :15%
- 5th Instalment on completion of Flat & before possession. : 5%

Project highlights

- Project approved by BDA
- Specifications with high quality construction
- Excellent Location
- Car Parking Facilities
- Power backup Generator Facilities (300 watts for each flat & Common Areas)
- Bore Wells for 24 hrs. water supply
- Overhead Water Reservoirs
- Intercom Telephone
- Lifts
- Community Hall (Air Conditioned)
- Gym (Air Conditioned)

Extra Charges

- Transformer -Rs 25,000/-
- Electric meter -Rs 5,000/-
- Maintenance charges for one year in advance -Rs 12,000/-
- Service tax as applicable.
- Registration charges extra as applicable at the time of registration.
- Society fund -Rs 25,000/-

Location Map

