

infi



**SUREEL  
GROUP**

BRICKS IN HARMONY

call : **9328 00 9328**  
sureelgroup.com

212, 2nd floor, Samaan II, Opp. Reliance Petrol Pump,  
100 Feet Road, Satellite, Ahmedabad-380015  
Phone: 079-400 600 55

architect and landscape design:



Hiren | Poonil architects

**Special Note :**

Developers reserves the rights to make necessary changes in the above specifications without any prior notice. Such changes would be binding to all the members.

Registration, AUDA charges, TORRENT, any other Govt. taxes & Maintenance charges will be borne by the members.

The information contained in this brochure is subject to change as may be approved by the authorities and cannot form part of any offer or contract. All plans are subject to any amendments approved by the relevant authorities. Floor areas are approximate and subject to final survey. Illustrations in this brochure are artists impressions and serve only to give an approximate idea of the project. While every reasonable care has been taken in providing this information, its owners cannot be held responsible for any inaccuracy.

Subject to Ahmedabad jurisdiction



**SUREEL** 3  
VERTICAL VISTAS

3 BHK APARTMENTS



Ever wished to touch the clouds from your window?  
Ever thought of being woken up by the sweet chirping  
of birds on your window?

Expect this and much more at Sureel 3 - a luxurious residential development  
nested in the heart of nature.

**Design philosophy :**

We strongly believe that mindless usage of Mother World's resources by humanity has  
wrecked havoc and we need to wake up to the fact that it is actually PAYBACK TIME.  
"GREEN LIVING" is the core theme at SUREEL - 3  
The project is registered with the Indian Green Building Council under category of  
IGBC Green Homes.



SUREEL 3  
VERTICAL VISTAS

Located in the prime location of Satellite and in close proximity to the Prerna Tirth Jain Derasar, but still in the lap of one of the most greenest pastures in the city.

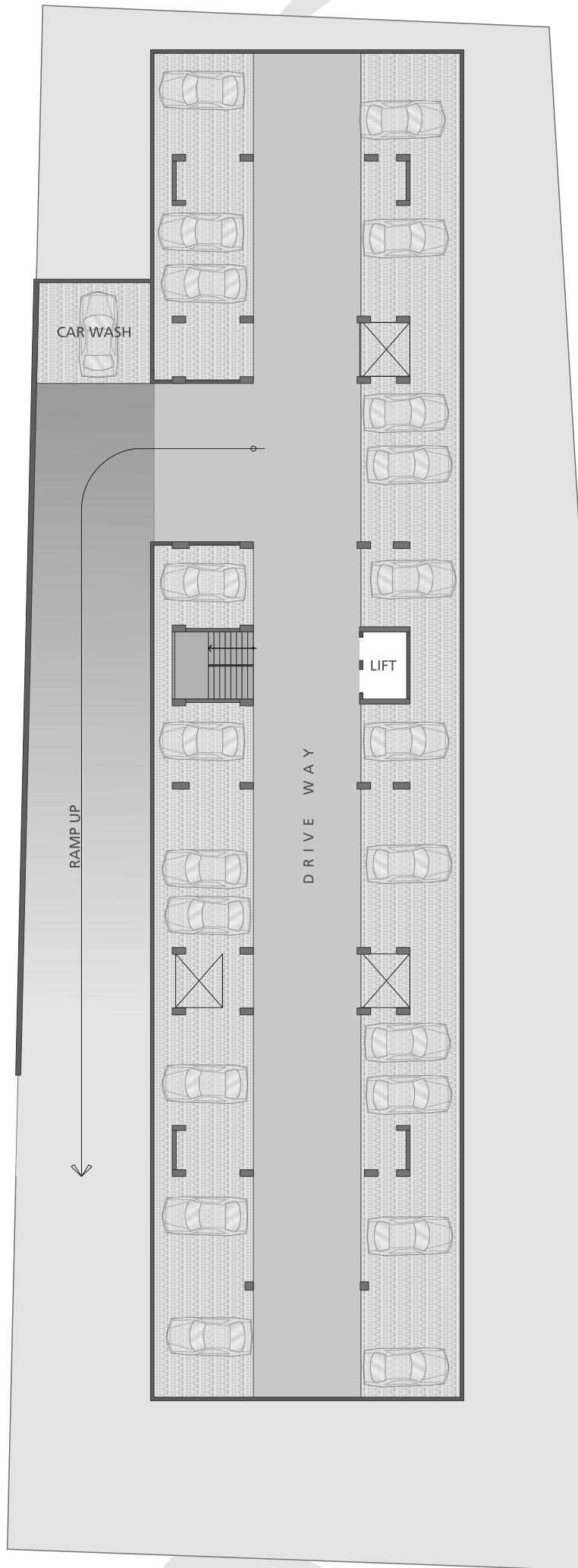
Being a green building relax in the comfort of your home without having the guilt of disturbing the creations of mother nature in this thoughtful eco-friendly development.

As the high rise building touches the sky it keeps you secluded from the hassles of the city,

What's more, enjoy the most breathtaking view ever from the terrace that's designed specifically to put life into your evenings.

With its thick greenery and care to preserve the delicate balance of nature, it's natural to feel that the project is **envisaged by nature lovers, not architects.**





BASEMENT PLAN



SITE PLAN

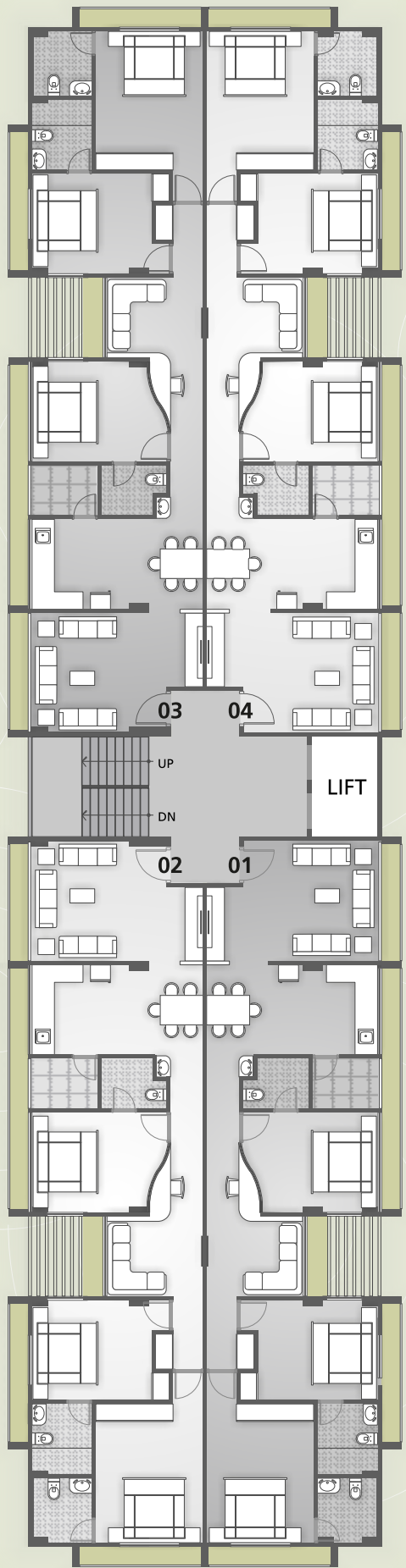
The design offers stunning views  
of the surroundings from  
flower bed lined windows of each room.

Special care has been taken in the  
planning keeping in mind  
the Indian traditions and family values  
to maintain seclusion among areas of the unit.





DRIVE WAY



DN

DRIVE WAY

FLOOR PLAN

GARDEN

CAR PORCH



DRIVE WAY



RAMP DN

DN

DRIVE WAY

TERRACE PLAN

GARDEN

CAR PORCH



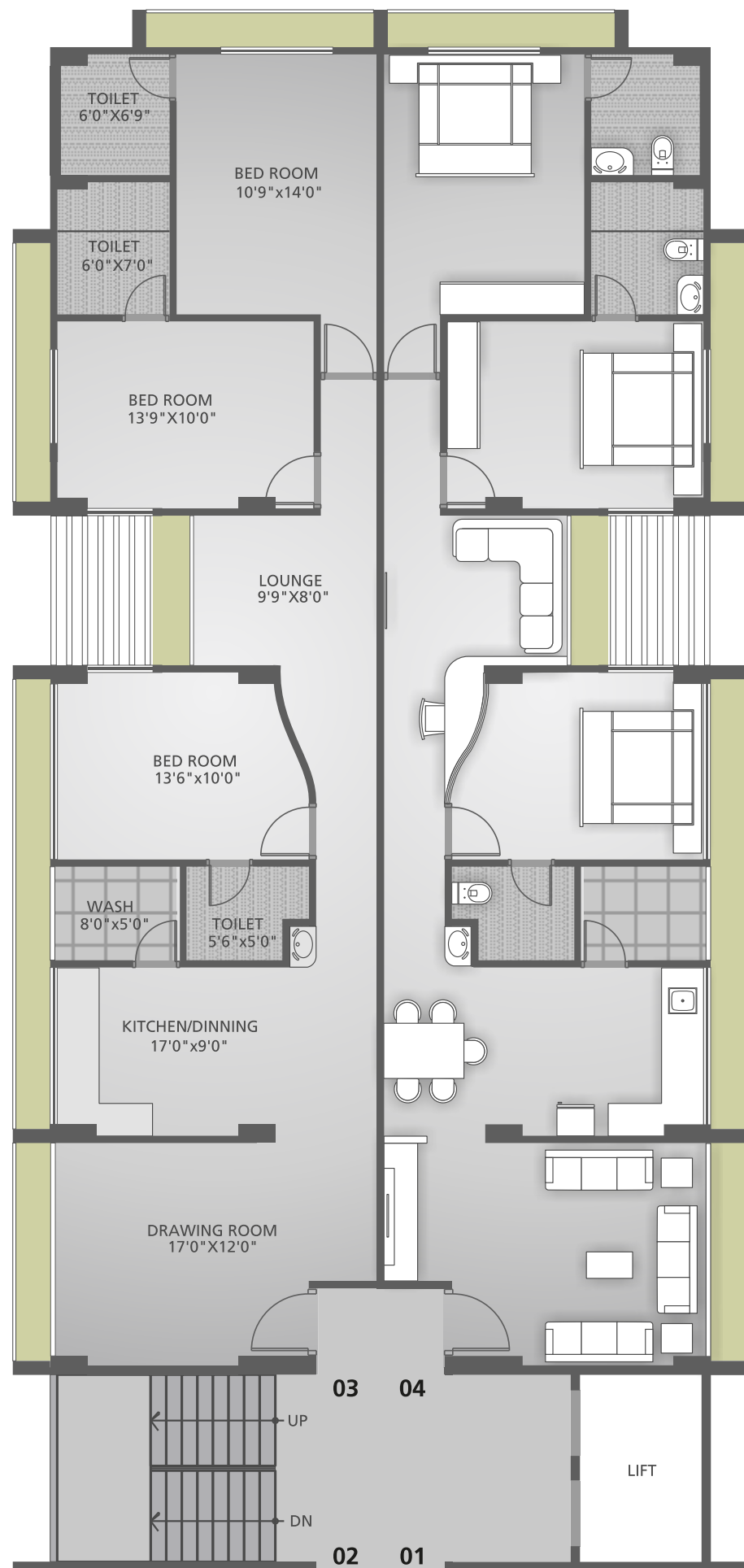
### Unique features

The highlight of the building concept is the internally operable horizontal louver design that allows requirement based intake of natural daylight and air thereby resulting in substantial decrease in energy consumption.

The project also comprises of other environment-friendly features like rain water harvesting, grey water recycling, water efficient fixtures and use of recycled and re-usable construction materials.

It also has a unique oxygen zone known as the SKY LOUNGE. This activity hub on terrace level consists of a gymnasium, library, splash pool, gaming zone, open air theatre and karaoke lounge.

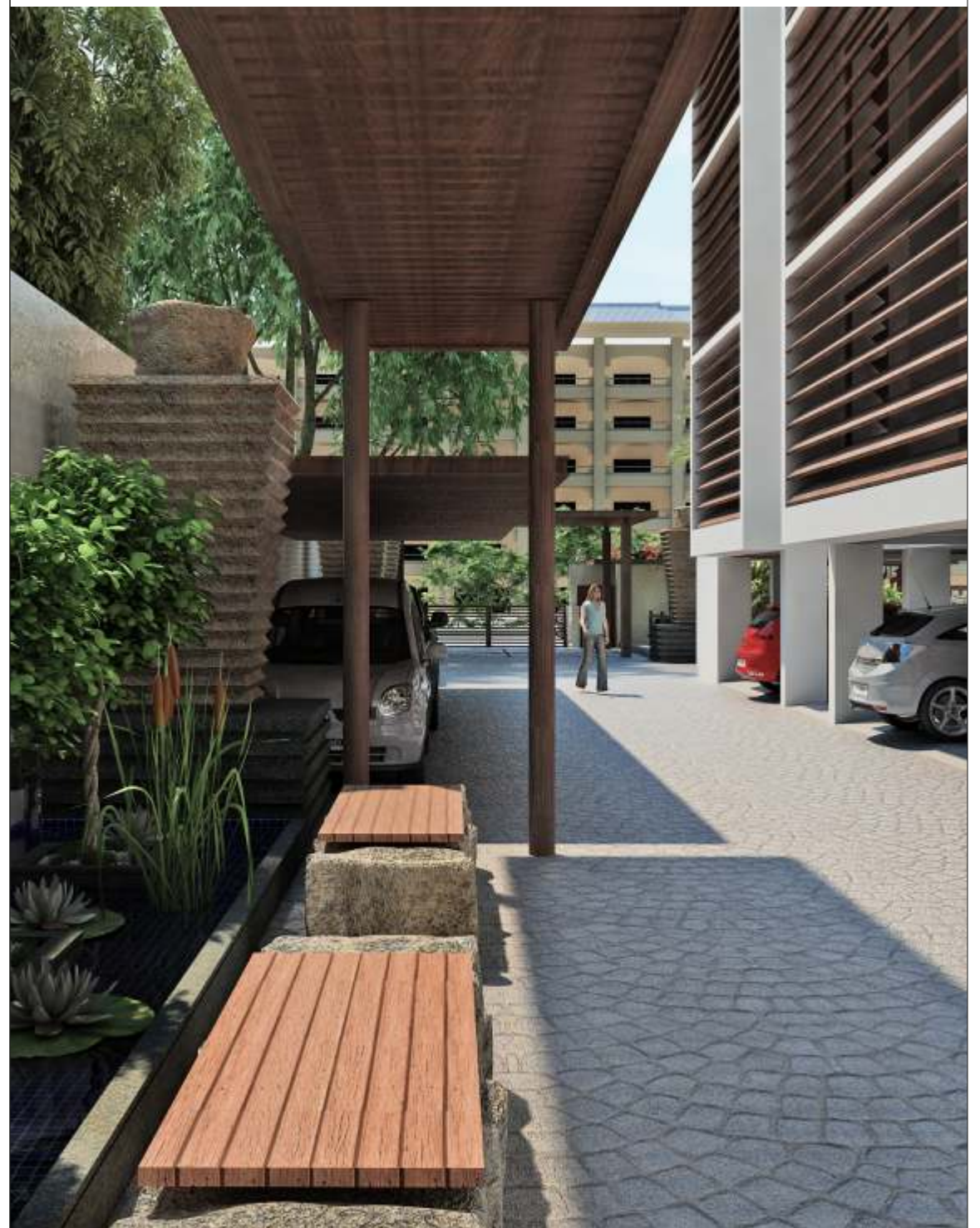


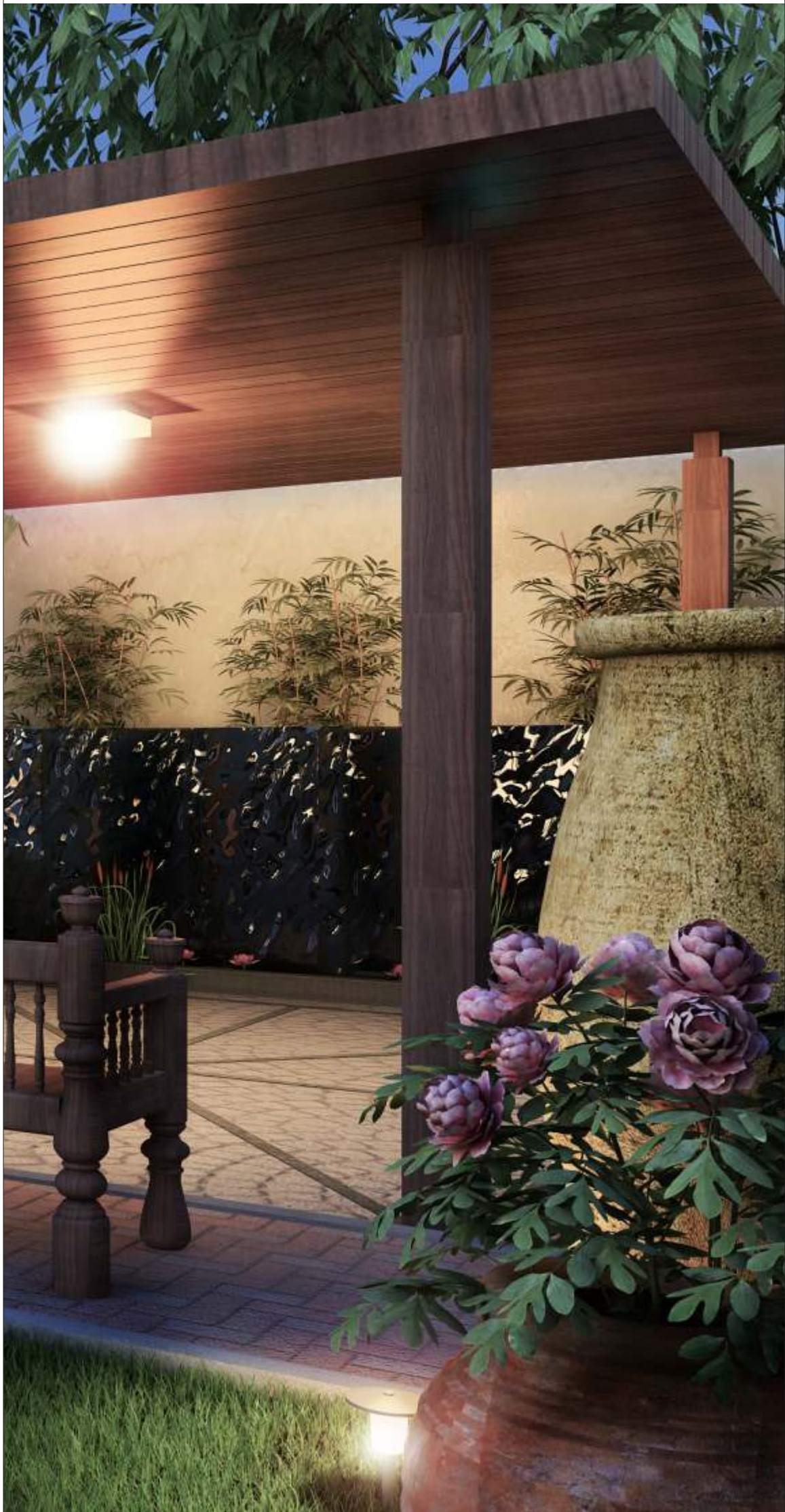


UNIT PLAN

### Specifications

- o Vitrified flooring in all rooms.
- o Wooden flooring in master bedroom.
- o Granite platform with S.S sink in kitchen.
- o Anti skid designer tiles in toilets
- o Fittings - Jaquar or equivalent.
- o Sanitary ware – Cera or equivalent.
- o Wooden flush door and aluminum sliding windows with stone jambs.
- o Internal Finish : Mala plaster with white cement based putty finish.
- o External Finish : Double coat sand face plaster with 100% acrylic paint.





Step into the abode of nature.  
Embark on a journey you've never  
experienced before.