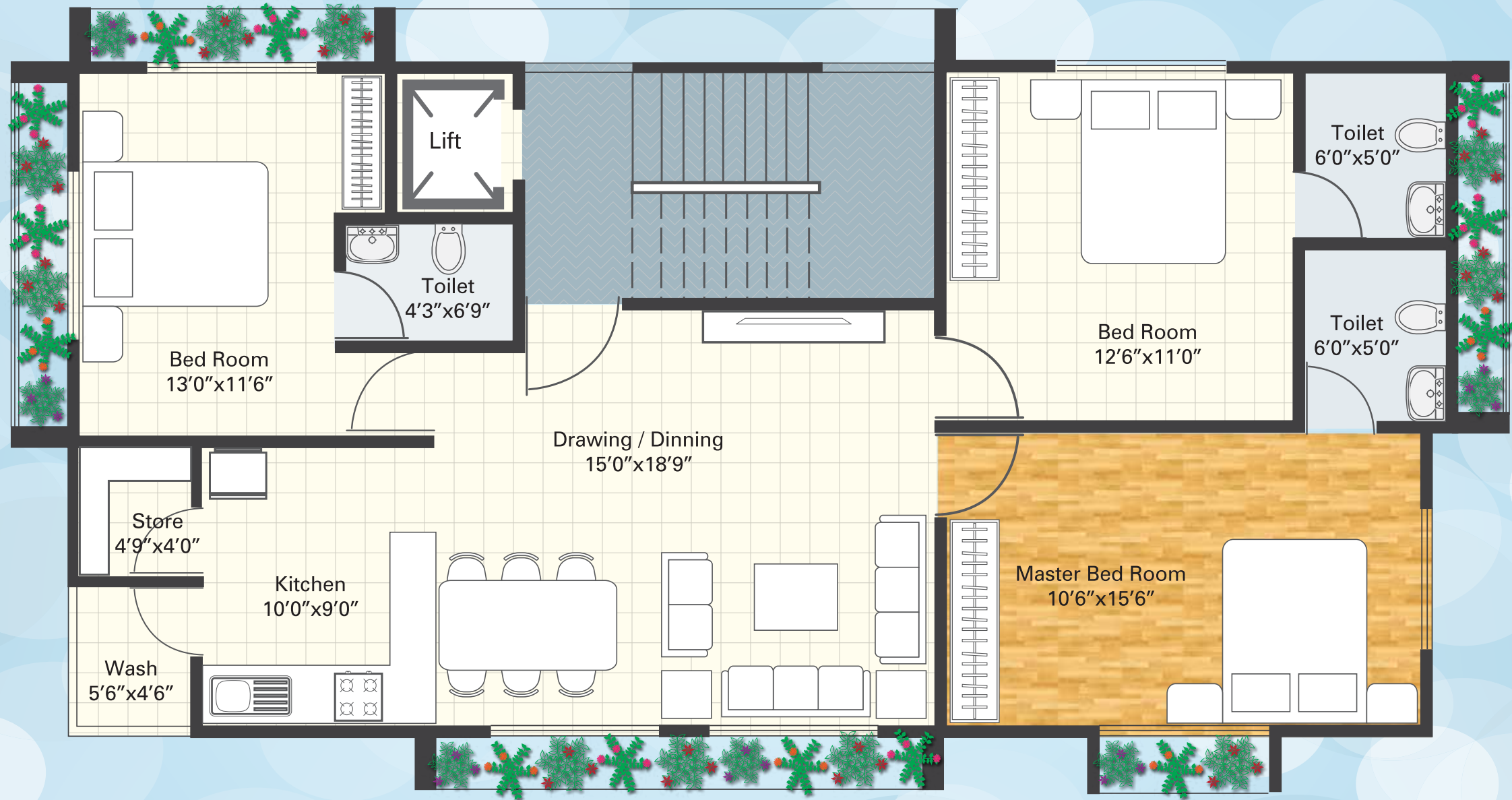


Supan PRIMEA

● 3 BHK Highend Apartments



Typical Floor Plan



Specifications

- Planing as per **VASTUSHASHTRA**
- **EAST** facing entrance
- Kitchen in **AGNI** corner
- All bedrooms in wind direction with cross ventilation
- Flower bed in front of all rooms
- Vitrified flooring in all rooms
- Wooden flooring in master bedroom
- Granite platform with S.S. Sink in kitchen
- Anti skid designer tiles in toilet
- Branded Bathroom fittings & Sanitary ware
- Attractive main door
- Wooden flush door and aluminium sliding windows with stone jambs
- Internal Finish : Mala plaster with white cement based putty finish
- External Finish : Double coat sand face plaster with acrylic paint



Site Plan



Special Note :

Developers reserves the rights to make necessary changes in the mentioned specifications without prior notice. Such changes would be binding to all the members.

Registration, AMC charges, TORRENT, any other Govt. Taxes & Maintenance charges will be born by the members.

The information contained in this brochure is subject to change as may be approved by the authorities and cannot form part of any offer or contract. All plans are subject to any amendments approved by the relevant authorities. Floor areas are approximate and subject to final survey. Illustrations in this brochure are artists impressions and serve only to give an approximate idea of the project. While every reasonable care has been taken in providing this information, its owners cannot be held responsible for any inaccuracy.

Subject to Ahmedabad Jurisdiction.



**SUPAN
BUILDCON**

BRICKS IN HARMONY

Office Address:
212, Samaan II, Opp. Reliance Petrol Pump, 100 Feet Road,
Satellite, Ahmedabad- 380015 Ph: 079 40060055

Site Address:
B/h Abhijit III (Pantaloons), Nr. Mithakhali Six Roads,
Ahmedabad - 380 006

Contact : 9328 00 9328