

THE PROJECT

- ◆ TITLE CLEAR CIDCO TRANSFER PLOT WITH CIDCO CC
- ◆ G+4 STOREYED TOWER WITH 1 BHK & 1 RK FLATS
- ◆ 24X7 SECURITY WITH SURVEILLANCE CAMERAS
- ◆ EARTHQUAKE RESISTANT RCC STRUCTURE
- ◆ BRANDED HIGH SPEED ELEVATORS
- ◆ FIRE FIGHTING FACILITY AND RAIN WATER HARVESTING

THE LOCATION

- ◆ EXCELLENT CONNECTIVITY TO PALM BEACH, MUMBAI - PUNE EXPRESS HIGHWAY, SEAWOODS - BELAPUR, VASHI AND J.N.P.T.
- ◆ 2 MIN. WALK FROM ULVE BUS STOP
- ◆ 3 MIN. WALK FROM BAMAN DONGARI RLY STN.
- ◆ 5 MIN. DRIVE FROM THE PROP. NAVI MUMBAI INTERNATIONAL AIRPORT.
- ◆ BANKS, MARKETS, HOSPITALS, SCHOOLS, COLLEGES, GARDENS, PLAY GROUNDS, RESTAURANTS IN THE VICINITY.
- ◆ 5 MINUTES WALKING DISTANCE FROM PROPOSED RELIANCE NMSEZ.
- ◆ 2 KM. FROM PROPOSED NHAVA SHEVA - SEWREE SEA LINK
- ◆ 1.5 KM. FROM RAMSHETH THAKUR SPORTS COMPLEX.

THE AMENITIES

FLOORING:

- ◆ VITRIFIED / FLOORING TILES IN ALL ROOMS.
- ◆ DESIGNER FLOORING - TOILETS & TERRACES.

KITCHEN:

- ◆ GRANITE KITCHEN PLATFORM WITH S.S. SINK.
- ◆ DESIGNER GLAZED TITLES UP-TO BEAM HEIGHT.
- ◆ PROVISION FOR EXHAUST FAN & PLUMBING FOR WATER PURIFIER.

DOORS:

- ◆ DECORATIVE LAMINATED MAIN DOOR WITH WOOD FRAME.
- ◆ DECORATIVE LAMINATED INTERNAL DOORS WITH WOOD FRAME.
- ◆ TOP QUALITY FIXTURES AND FITTING WITH GODREJ LOCKS

WINDOW:

- ◆ POWDER COATED ALUMINUM SLIDING WINDOWS.
- ◆ GLASS LOUVERED WINDOW IN TOILETS

WATER:

- ◆ UNDERGROUND AND OVERHEAD WATER TANK WITH ADEQUATE STORAGE CAPACITY

TERRACE:

- ◆ SPECIAL BRICKBAT WATER PROOFING

WALLS AND PAINTS:

- ◆ PUTTY FINISHED INTERNAL WALLS.
- ◆ EMULSION PAINTS FOR INTERNAL WALLS.
- ◆ ACRYLIC PAINT FOR EXTERNAL WALLS.

BATH & WC:

- ◆ DESIGNER GLAZED TILES DADO UP-TO BEAM LEVEL.
- ◆ ANTI-SKID DESIGNER FLOORING. BRANDED SANITARY WARES.
- ◆ CONCEALED PLUMBING WITH PREMIUM QUALITY CP FITTINGS.
- ◆ PROVISION FOR EXHAUST FAN & PLUMBING FOR GEYSER.

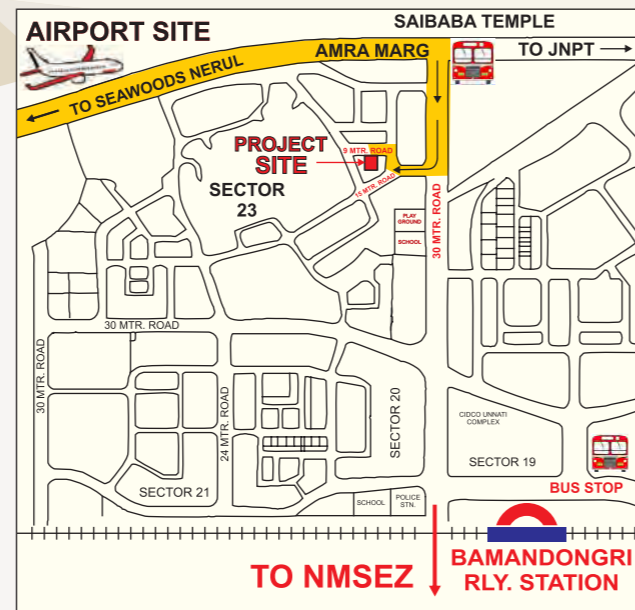
ELECTRIFICATION:

- ◆ CONCEALED COPPER WIRING & MCB. ISI MODULAR SWITCHES.
- ◆ POINTS FOR A.C. AND TV / CABLE IN IN ALL ROOMS.

ARCHITECT:

- ◆ M/S. ATUL PATEL

LOCATION MAP



RECENT PROJECT

SHREE SANKALP



**PLOT NO. A10, SECTOR 8, ULWE.
OC RECEIVED - 2017**

Shree Sadan



SUPCON DEVELOPERS

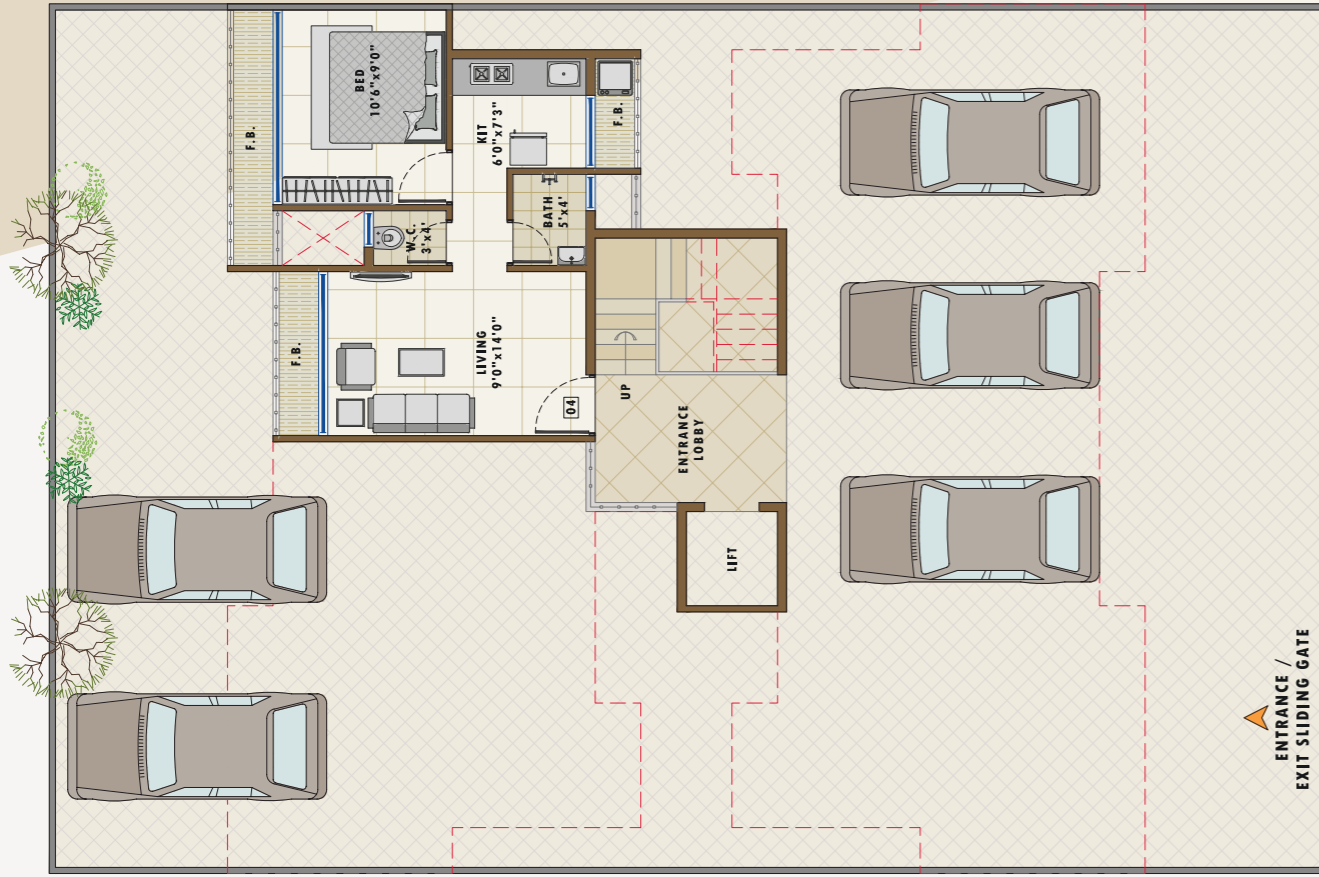
Plot No. A-10, Sector 8, ULWE, Navi Mumbai - 410 206.

Email : sales@supcondevelopers.com, supcondevelopers.com

Tel : +91 9930862908 / +91 9769300177

**PLOT NO. 188. SECTOR 23. ULWE
MAHARERA REGN. NO. : P52000013883**

GROUND FLOOR PLAN



SECOND FLOOR PLAN



FIRST / THIRD FLOOR PLAN



FOURTH FLOOR PLAN

