



JOY  
LEGEND

---

BE THE ONE

UNION PARK, UPPER PALI HILL, KHAR (W)

ELEVATIONS & VIEWS

LEGENDS HAVE MANY  
GLORIOUS STORIES TO LIVE.  
HERE IT HAS TOO.

A magnificent  
multi-storeyed tower,  
with 2 wings sprawled across  
1 acre of land

SOUTH VIEW / PIZZA METRO



Artist's Impression

FRONT WEST VIEW / CARTER ROAD



Artist's Impression

EAST VIEW / KHAR GYMKHANA



Artist's Impression

EAST VIEW / KHAR GYMKHANA



Artist's Impression

WEST VIEW / CARTER ROAD



Artist's Impression

EAST VIEW / KHAR GYMKHANA





JOY  
LEGEND

---

BE THE ONE

UNION PARK, UPPER PALI HILL, KHAR (W)

AMENITIES



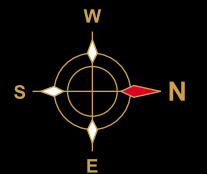
# Podium Plan with Ramp

WEST VIEW / CARTER ROAD



→ DR. AMBEDKAR ROAD ←

EAST VIEW / KHAR GYMKHANA





Podium Level - Double Height Entrance Lobby  
Area 4000 Sq. Ft. Appx.



Artist's Impression



Podium Level - Open To Sky Pavilion  
Area 4500 Sq. Ft. Appx.



Artist's Impression



Podium Level - Children Play  
Area 5600 Sq. Ft. Appx.



Artist's Impression



Well Equipped Gymnasium  
Area 2000 Sq. Ft. Appx.



Artist's Impression



Indoor Games Area 1500 Sq. Ft. Appx.

Jacuzzi & Sauna Room



Artist's Impression



Artist's Impression



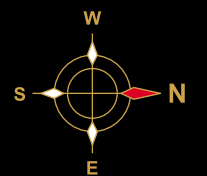
Artist's Impression

# Terrace Floor Plan

WEST VIEW / CARTER ROAD



EAST VIEW / KHAR GYMKHANA





Terrace Level Sitting Lounge  
Area Each 3300 Sq. Ft. Appx.



Artist's Impression





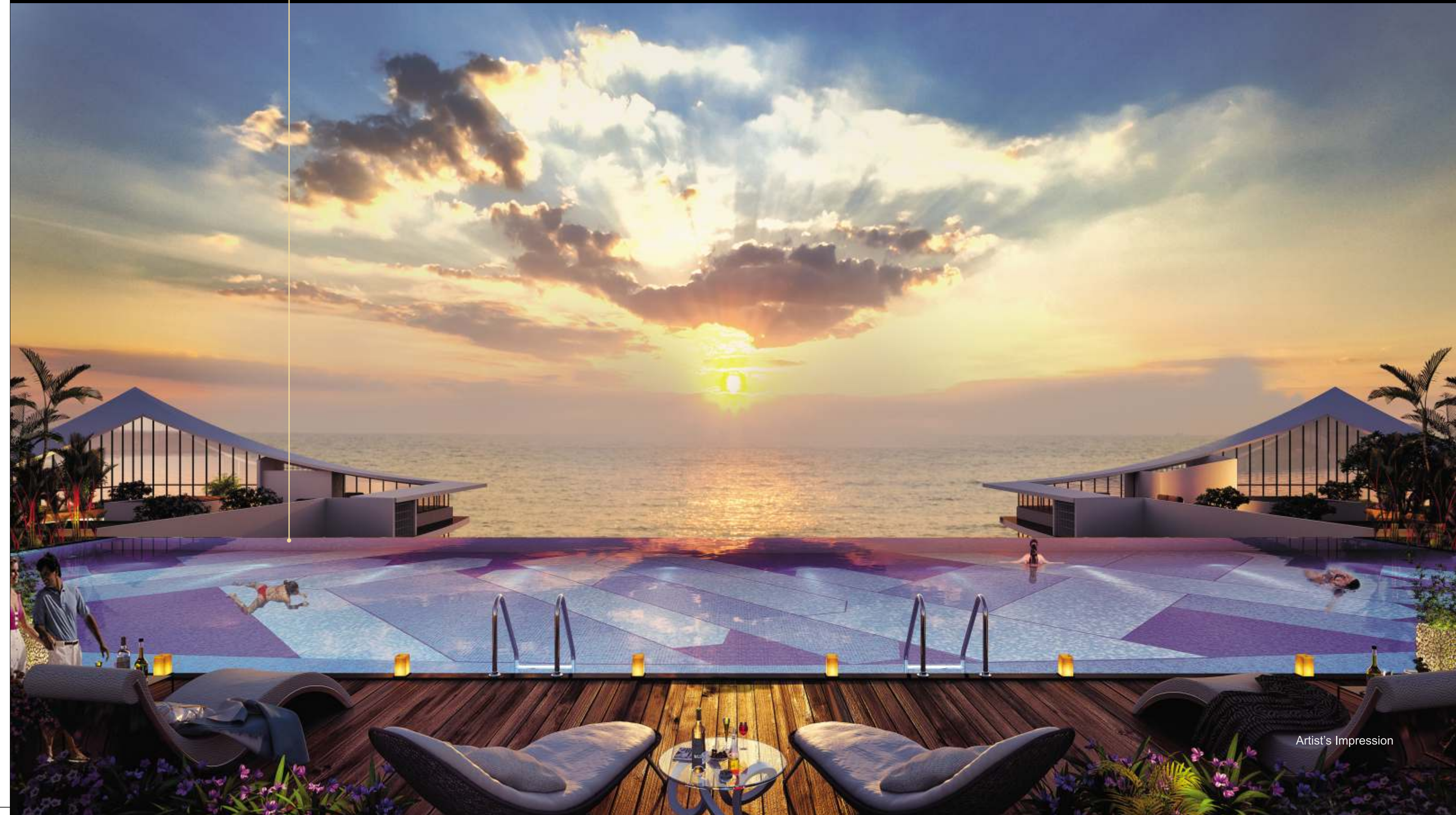
Terrace level - Café  
Area Each 3300 Sq. Ft. Appx.



Artist's Impression



Terrace level - Infinity Pool 60' x 20' - Area 1200 Sq. Ft.  
Wooden Deck - Area 2800 Sq. Ft.



Artist's Impression

# Discover the best of 60,000 sq. ft. & more Recreation Lifestyle

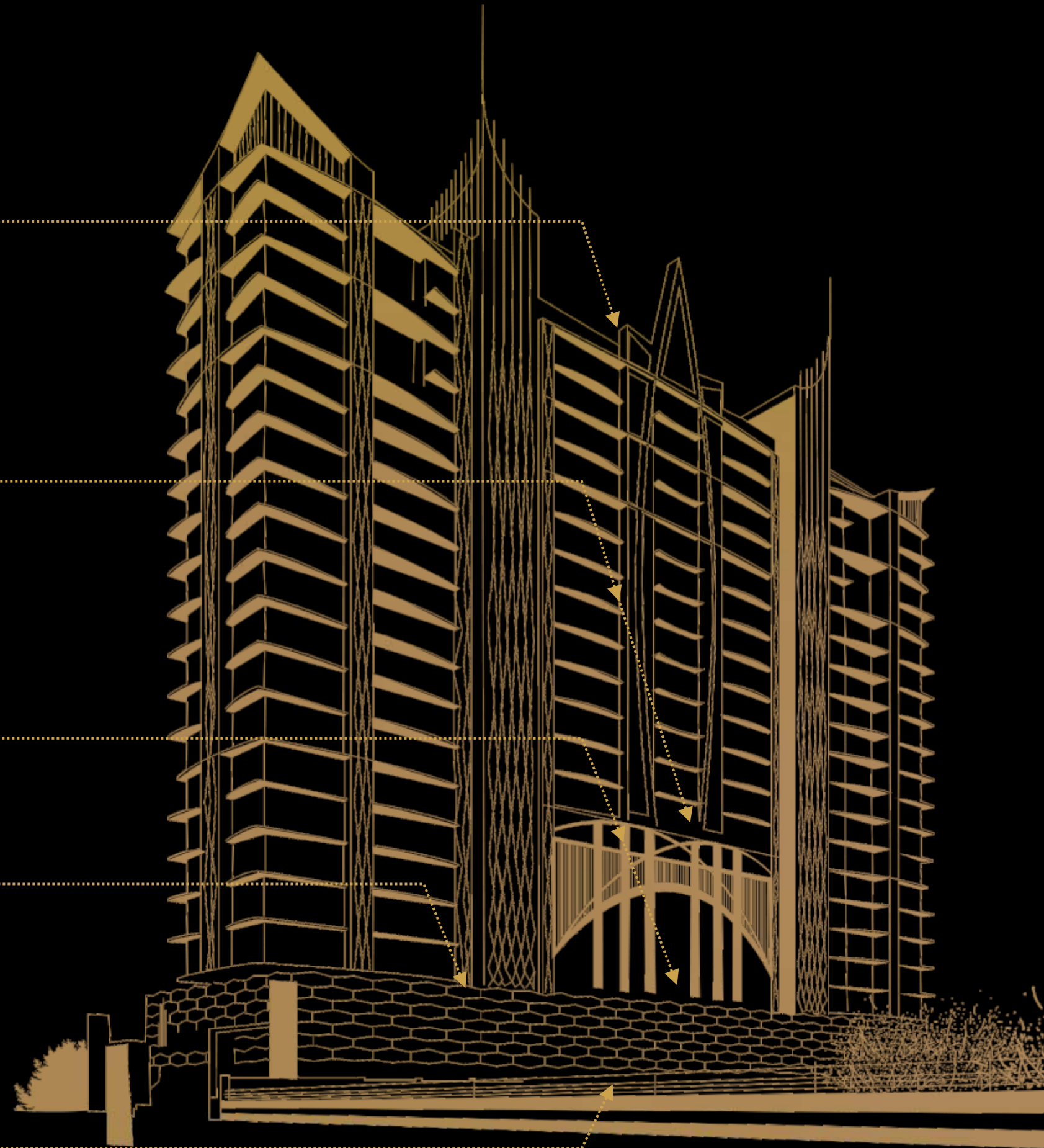
*16,000 sq. ft.  
of Over-the-top Terrace Indulgences*

*8,000 sq. ft.  
of Extraordinary Luxuries on Refuge Level*

*4,000 + 4,000 sq. ft.  
of Exquisite Pleasures in Podium Lounge*

*22,000 sq. ft.  
of Unparalleled Podium Recreation*

*6,000 sq. ft.  
of Awe-inspiring Ground Level Amenities*



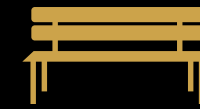
## Lifestyle Features on Basement, Stilt and Podium Level



Themed gardens with  
Zen Garden, rock garden  
and designer garden



Well-equipped  
children's play area  
with sand pits



Senior citizen's corner  
with open to  
sky sitting



Jogging track  
with aromatic  
flowerbeds beside



Well-paved  
cycling track and  
skating rink



Lush green  
badminton court



Swanky  
squash court



Steam & sauna  
room and Jacuzzi



Hi-tech gymnasium  
with cardio equipment



Indoor games room  
and entertainment zone

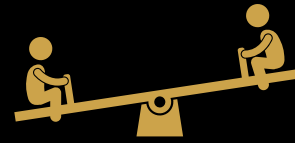
## Lifestyle Features on Terrace Level



Mesmerising sea view  
from terrace



Terrace gardens with  
herbal plantations



Children's activity area  
with ultramodern  
equipment



Open spaces with  
designer landscaping



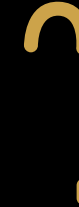
Infinity pool with  
wooden deck



Yoga, aerobics and  
meditation lounges



Charming gazebos  
with sit outs



Senior citizen's sit outs  
and relaxation zones



Sky lounge with  
sit-outs



Sky jogging track and  
acupressure pathways



Sky observatory deck  
with powerful telescope



Sky barbecue lounge  
for parties

## Utility Features



Exotic double-height  
entrance lobby



Well-appointed reception  
area with attendants



Lavish waiting lounge



Ambience lighting  
and vertical garden  
in the lobby



Well-appointed  
business centre



Wi-fi enabled zone  
with telecom apparatus



Advanced security and  
surveillance system



24X7 CCTV surveillance  
in common areas\



Manned patrolling and  
security in parking area



Hi-tech fire safety  
and electrical systems



Well-defined parking  
spaces for vehicles



Well-provisioned  
car wash areas



Well-appointed  
car charging stations



JOY  
LEGEND

---

BE THE ONE

UNION PARK, UPPER PALI HILL, KHAR (W)

FLOOR PLANS

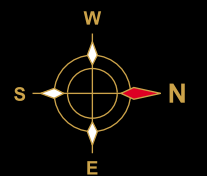
# Typical Floor Plan

## 3 & 4 BHK APARTMENTS

WEST VIEW / CARTER ROAD



EAST VIEW / KHAR GYMKHANA



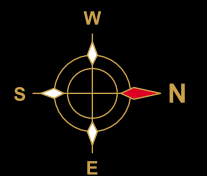


Typical Floor Plan  
4 & 5 BHK APARTMENTS

WEST VIEW / CARTER ROAD



EAST VIEW / KHAR GYMKHANA



# Typical Floor Plan

## 3 & 4 BHK APARTMENTS - A WING

WEST VIEW / CARTER ROAD



3 BHK

3 BHK

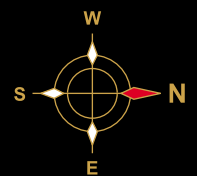
3 BHK



EAST VIEW / KHAR GYMKHANA

4 BHK

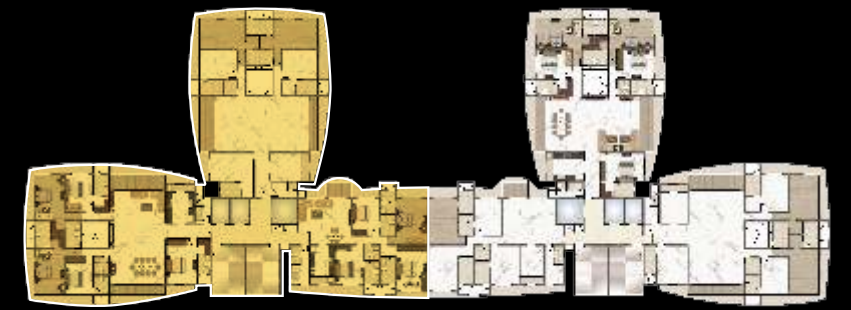
3 BHK



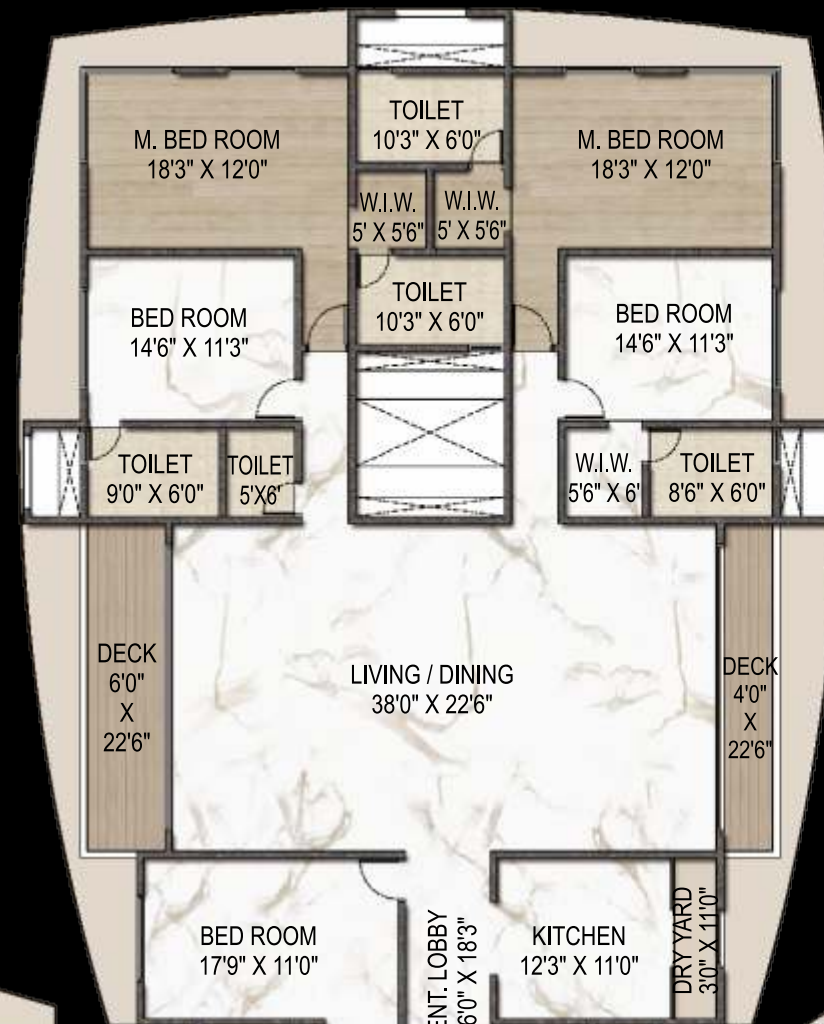
# Typical Floor Plan

## 4 & 5 BHK APARTMENTS - A WING

WEST VIEW / CARTER ROAD



5 BHK

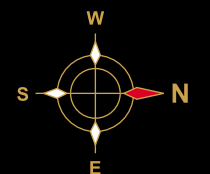


5 BHK



4 BHK

EAST VIEW / KHAR GYMKHANA



# Typical Floor Plan

## 3 & 4 BHK APARTMENTS - B WING

WEST VIEW / CARTER ROAD



# Typical Floor Plan

## 4 & 5 BHK APARTMENTS - B WING

WEST VIEW / CARTER ROAD



5 BHK



4 BHK

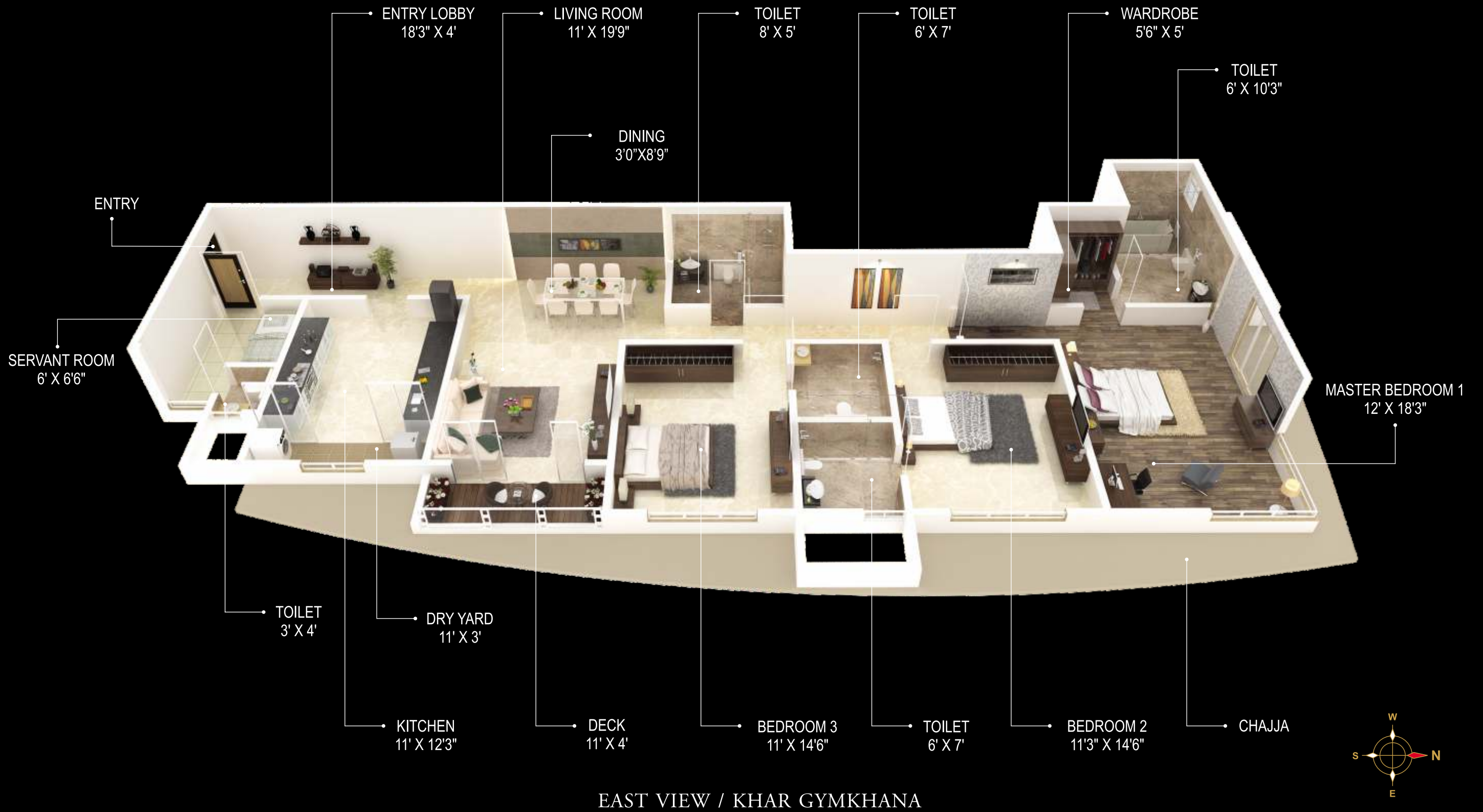
EAST VIEW / KHAR GYMKHANA

5 BHK



# 3 BHK - Isometric Plan

WEST VIEW / CARTER ROAD

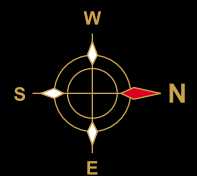


# 4 BHK - Isometric Plan

WEST VIEW / CARTER ROAD



EAST VIEW / KHAR GYMKHANA







## Legend at a Glance

### Project Hallmarks

- A magnificent multi-storeyed tower, with 2 wings sprawled across 1 acre of land
- Situated at a posh and premium location of Khar (W)
- Offering super-spacious 5 & 7 BHK luxurious duplexes and ultra-modern 3, 4 & 5 BHK apartments
- Superlative lifestyle features on podium and terrace floor
- Advanced safety, security and surveillance systems
- Well-defined parking spaces for vehicles

### Avant-garde Lifestyle Features on Basement, Stilt & Podium Level

- Themed gardens with zen garden, rock garden and designer garden
- Well-equipped children's play area with sand pits
- Senior citizen's corner with open to sky sitting
- Jogging track with aromatic flowerbeds beside
- Well-paved cycling track and skating rink
- Lush green badminton court
- Steam & sauna room and Jacuzzi
- Hi-tech gymnasium with cardio equipment
- Indoor games room and entertainment zone

### Sky-luxury Features on Terrace Level

- Mesmerising sea view from terrace
- Terrace gardens with herbal plantations
- Children's activity area with ultramodern equipment
- Open spaces with designer landscaping
- Infinity pool with wooden deck
- Yoga, aerobics and meditation lounges
- Charming gazebos with sit outs
- Senior citizen's sit outs and relaxation zones
- Sky gymnasium with international apparatus
- Sky jogging track and acupressure pathways
- Sky observatory deck with powerful telescope
- Sky barbeque lounge for parties

### Extraordinary Utility Features

- Exotic double-height entrance lobby
- Well-appointed reception area with attendants
- Lavish waiting lounge
- Ambience lighting and vertical garden in the lobby
- Well-appointed business centre with proper sitting arrangements and conference tables
- Wi-fi enabled zone with telecom apparatus
- 24X7 CCTV surveillance in common areas
- Manned patrolling and security in parking area
- Hi-tech fire safety and electrical systems
- Well-defined parking spaces for vehicles
- Well-provisioned car wash areas
- Well-appointed car charging stations