



Specifications

Structure:

Reinforced Cement Concrete (RCC) framed structure

Super-structure:

Light-weight table molded bricks masonry in cement mortar

Plastering:

Cement mortar 2 coats of Plastering for external and internal walls

Joinery/Wood:

- **Main door:** Teak wood frame and shutter, aesthetically designed with Melamine polishing, fixed with reputed brass/SS hardware fittings
- **Internal doors:** Teak wood frame with molded skin-paneled shutters fixed with reputed brand hardware
- **Windows:** Aluminum shutter panels with Modi-guard glass

Flooring Dadoing & Cladding:

- **Living, Dining, kitchen & Bedrooms:** 2'x2' vitrified flooring
- **Toilets & Utility:** Anti - skid ceramic floor tiles
- **Corridors & Staircase:** Marble flooring with Granite
- **Bathrooms:** Glazed Ceramic tile dado
- **Kitchen:** Glazed Ceramic tile/Granite Dado of 2.0'above kitchen platform
- **Utility & Wash:** Glazed Ceramic tile up to 3'0" height
- **Lifts:** Granite / Vitrified wall Cladding

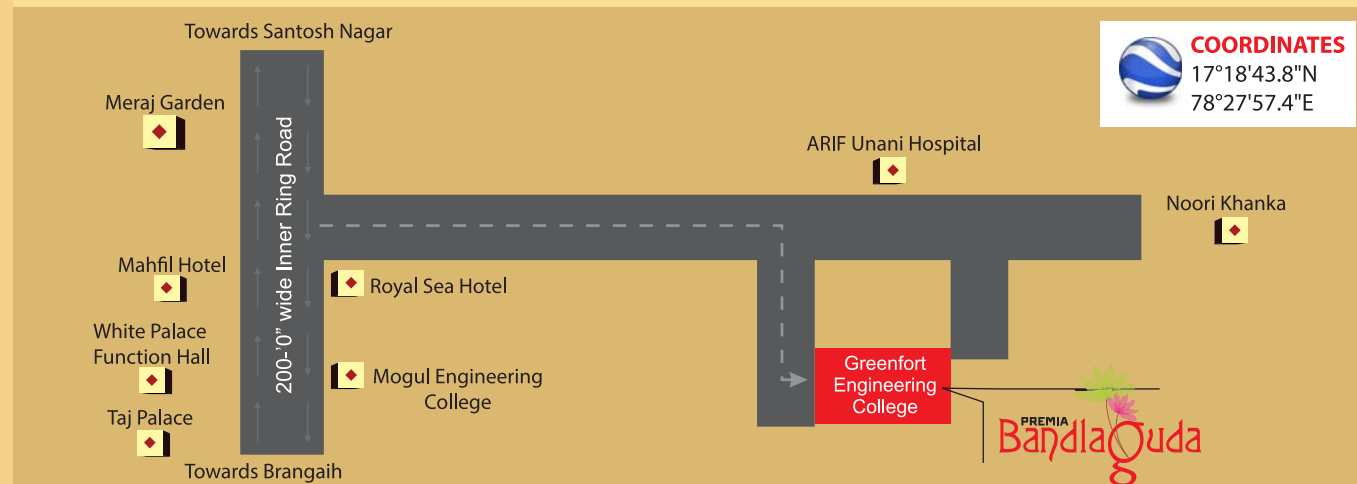
Kitchen:

- Granite platform with built in Stainless Steel sink
- Tap connections for both Municipal & Ground water
- Provision for R/O Filter
- Connection of Bore water in wash area

Toilets:

- All Toilets consist of:
- EWC with flush Tank of reputed make.

- Hot & cold mixer with shower
 - Fittings of chrome plated
 - False Ceiling in all toilets
 - Branded taps & sanitary fittings
- Painting:**
- Internal: Smooth Luppum finish with Plastic Emulsion Paint
 - External: Combination of texture with external apex Paint
 - Doors: Enamel Paint / Polish
- Electrical:**
- Concealed Multi Strand Copper Wiring in conduit of standard make
 - Provision for Split A/c in all Bed Rooms
 - Power Plugs for all kitchen ware. Power Plug for Washing Machine in Utility
 - Sufficient Power Points for Gadgets in Bed Rooms & Hall
 - 3 Phase supply for each unit with individual meter board
 - Good Quality Modular Switches
- Telecom:**
- Telephone Points in Living Rooms
- Internet:**
- Internet Access point in each flat
- Cable TV:**
- TV Points in Master Bed Room and Living Room
- Lifts:**
- 1 Lift capacity of 6 Passengers each of KONE/JOHNSON make
- Generator:**
- Power Back Up for common services and 2 Points in each Flat



COORDINATES
17°18'43.8"N
78°27'57.4"E



start your new chapter of life

Corporate Office:

SHAMSHIRI INFRA PROJECTS PRIVATE LIMITED
Shamshiri Estate, 240, Lakdi-ka-pool, Hyderabad – 500 004, India
Ph: +91-40-64646244, 66636244, Email: info@shamshiri.in

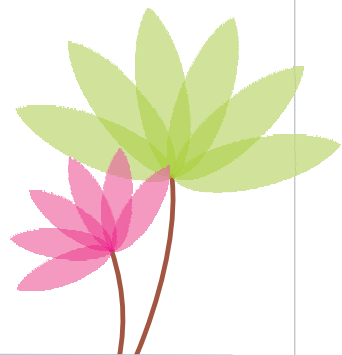
Site Address:

PREMIA Bandlaguda
Bandla Guda, Chandrayanagutta, Hyderabad, Andhra Pradesh 500005
CALL : +91 98490 66662

Follow us on



PREMIA BandlaGuda



BHK	AREA	UNIT No.	FLATS
3 BHK	1510 Sq. ft	1	5
2 BHK	975 Sq. ft	2	5
2 BHK	1020 Sq. ft	3	5
2 BHK	1070 Sq. ft	4	5
2 BHK	1124 Sq. ft	5	5
2 BHK	1092 Sq. ft	6	5
2 BHK	1098 Sq. ft	7	5

Total floor: Stilt + 5 Typical Upper floors, each floor - 7 flats

Total flats: 35.

AMENITIES:

Party Hall, Indoor games, Hall for Pool Table, Table Tennis, Caroms, Chess, etc., TV Lounge, Slaughter Room, Designer false ceiling for all lobbies and visitors' lounge area, Children Play-area (Tot-lot), CCTV, Intercom facility from flat to security, 100% Back-up Generator, 24x7 Water and Security.

R o a d 2 0 ' w i d e

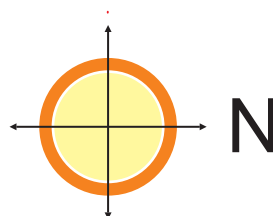
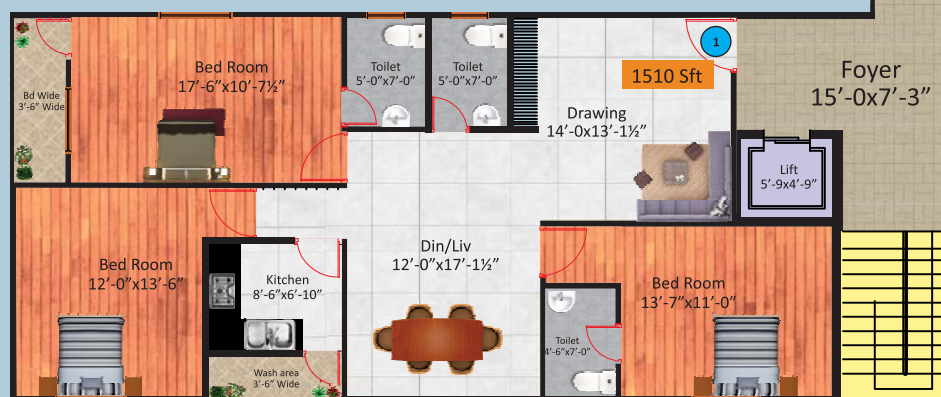
R o a d 1 6 ' w i d e

R o a d 1 7 ' w i d e



C O R R I D O R 6 0 - W I D E

R o a d 3 0 ' w i d e



FINAL RATE PER SFT: RS. 2500/- (Rupees Two Thousand Five Hundred only)

1 COVERED CAR PARKING & AMENITIES: RS.1,50,000/-