



WESTLINE  
*Fairmont*  
KADRI...

In the heart of city, yet so serene

There is nothing like  
staying at home with  
real comfort.



## A Contemporary Architecture and a convenient location.

Westline Fairmont, a sensory experience in living in the heart of city still amidst nature. Hear the never ending melody of chirping birds, smell the fresh fragrance of blossoming flowers touch the pure, clean abundant air and taste life at its very best. Westline Fairmont is a contemporarily designed apartments located in the highly sorted after suburb of Kadri, Mangalore.

With an engaging environment, tastefully conceived space optimised apartments and convenience of a self-contained locality, Westline Fairmont beckons to realize most cherished dreams of the burgeoning middle and upper middle class residents. Westline Fairmont not only offers home, but a comfortable lifestyle to match the ambience. Westline Fairmont, embellished with classy specifications is an outcome of meticulous architectural planning and ensures the perfect harmony of aesthetics and functionality. Westline Fairmont is a place that encourages growth of the children in healthy pollution free environment. With a separate play area and indoor games room you can watch the kids blossoming in full colours. The elegant and stylish apartments are complemented by imaginative recreation and rejuvenation facilities like roof top party hall and Gymnasium.

Westline Fairmont is at the centre of superior living in Kadri, promising 24 hrs water supply and power backup. Moreover quality education, healthcare, religious places, Bus and other commute & entertainment facilities well within the reach.

The project comprises of 1, 2 & 3 bedroom apartments of 760 S.Ft, 1345 S.Ft and 1620 S.Ft respectively.





# Highlights

- Located on most sorted after locality of Kadri
- Elegantly designed teak main and bedroom frames
- Attractive stainless steel finish fully automatic lifts
- Stainless steel balcony railings
- Children's play area
- Club house, gym and indoor games facility
- Neatly designed covered car parking
- Surveillance monitoring and recording system
- Excellent landscaping and building illumination
- Generator backup
- Telephone with Centrex facility
- 24X7 water and electricity provisions
- Aluminum/UPVC windows
- Top quality sanitary ware
- Superior quality electric wires and modular switches
- Spacious & thoughtfully designed 2BHK & 3 BHK apartments
- Design priorities to privacy, comfort, natural light, cross ventilation and maximum utilization of space
- Quality construction ensured.

# Specifications

## Bedrooms



- ☑ Telephone points in master bedroom
- ☑ Option of wooden or vitrified flooring for master bedroom
- ☑ AC point in master bedroom
- ☑ Internet provision in master bedroom
- ☑ Premium vitrified flooring in other bedrooms
- ☑ Two way light controls in master bedroom

## Balconies



- ☑ Contemporary balcony railings adhering to safety measures
- ☑ Ceramic or Terra-cotta anti skid tiles
- ☑ Electrical point for usage of laptops or other equipments

## Living/Dining



- ☑ TV and telephone points in living room
- ☑ Centrex facility in living room
- ☑ High quality vitrified flooring
- ☑ wash basin provision
- ☑ Powder room facility

## Kitchen



- ☑ Granite Platform with stainless sink
- ☑ Utility area with plumbing and power supply for washing machine
- ☑ Adequate power points
- ☑ Exhaust fan provision
- ☑ Provision for Aqua Guard
- ☑ Power supply for refrigerator and microwave oven
- ☑ Ample day light design

## Elevator

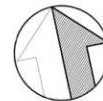


- ☑ Stainless steel finish with attractive roof lights
- ☑ ARD system (Automatic Rescue Device)
- ☑ Automatic doors
- ☑ Risk free operation
- ☑ Emergency alarm facility
- ☑ Floor notification facility

## Facilities



- ☑ Childrens play area
- ☑ Club house facility
- ☑ GYM facility
- ☑ Video surveillance system
- ☑ LED lighting in common areas
- ☑ Neatly desinged basement car parking
- ☑ 24X7 water and power backup provision



NORTH



WESTLINE  
*Fairmont*  
KADRI...

3 BHK  
TYPE 1

1 620SFT+1 025SFT P.GARDEN

WESTLINE BUILDERS PVT LTD  
First Floor, Mangalore Gate Building  
Kankanady Junction, Mangalore 575002

PH: 0824 2444 444  
EM: [properties@westlinebuilders.com](mailto:properties@westlinebuilders.com)

[www.westlinebuilders.com](http://www.westlinebuilders.com)



NORTH



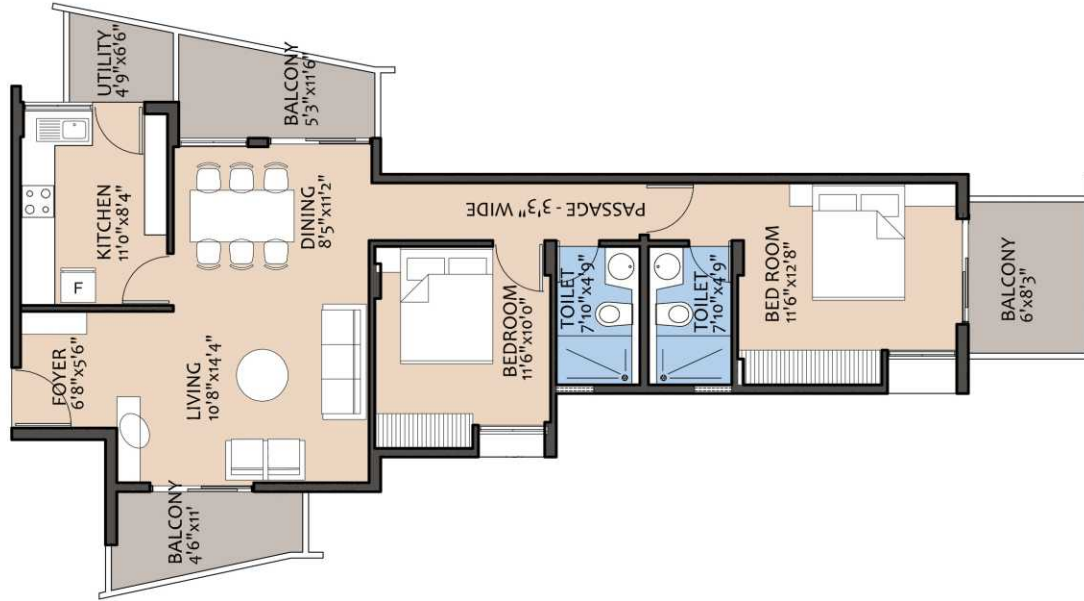
WESTLINE  
*Fairmont*  
KADRI...

3 BHK  
TYPE 1  
1620 SQFT

WESTLINE BUILDERS PVT LTD  
First Floor, Mangalore Gate Building  
Kankanady Junction, Mangalore 575002

PH: 0824 2444 444  
EM: properties@westlinebuilders.com

www.westlinebuilders.com



WESTLINE  
*Fairmont*  
 KADRI...

2 BHK

1345 SFT



NORTH

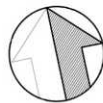


WESTLINE BUILDERS PVT LTD  
 First Floor, Mangalore Gate Building  
 Kankanady Junction, Mangalore 575002

PH: 0824 2444 444  
 EM: properties@westlinebuilders.com

www.westlinebuilders.com





NORTH



WESTLINE  
*Fairmont*  
KADRI...

1 BHK  
TYPE 2  
760 SQFT

WESTLINE BUILDERS PVT LTD  
First Floor, Mangalore Gate Building  
Kankanady Junction, Mangalore 575002

PH: 0824 2444 444  
EM: [properties@westlinebuilders.com](mailto:properties@westlinebuilders.com)

[www.westlinebuilders.com](http://www.westlinebuilders.com)



NORTH

ROAD - (PROPOSED WIDTH 9M WIDE)

**FIRST FLOOR UNIT PLAN**

UNIT NO	UNIT TYPE	UNIT SIZE
1	3 BHK	1620 SFT + 1025 SFT P.GARDEN
2	1 BHK	760 SFT + 180 SFT P.GARDEN
3	2 BHK	1345 SFT

*Fairmont* WESTLINE  
KADRI...



WESTLINE BUILDERS PVT LTD  
First Floor, Mangalore Gate Building  
Kankanady Junction, Mangalore 575002

PH: 0824 2444 444  
EM: properties@westlinebuilders.com

www.westlinebuilders.com



TYPICAL FLOORPLAN

UNIT NO	UNIT TYPE	UNIT SIZE
1	3 BHK	1620 SFT
2	1 BHK	760 SFT
3	2 BHK	1345 SFT

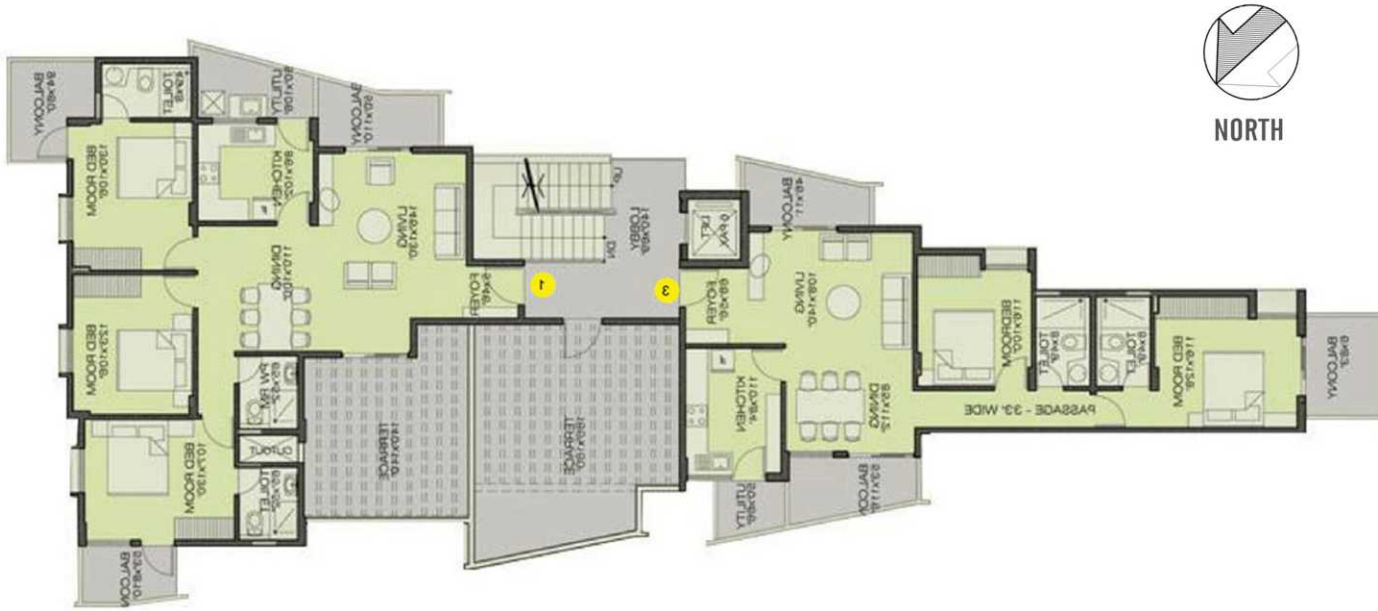
WESTLINE  
*Fairmont*  
KADRI...



WESTLINE BUILDERS PVT LTD  
First Floor, Mangalore Gate Building  
Kankanady Junction, Mangalore 575002

PH: 0824 2444 444  
EM: properties@westlinebuilders.com

www.westlinebuilders.com



FOURTH FLOORPLAN

WESTLINE  
*Fairmont*  
KADR...

UNIT NO	UNIT TYPE	UNIT SIZE
1	3 BHK	1620 SFT + 225 SFT P.TERRACE
2	1 BHK	1345 SFT + 370 SFT P.TERRACE



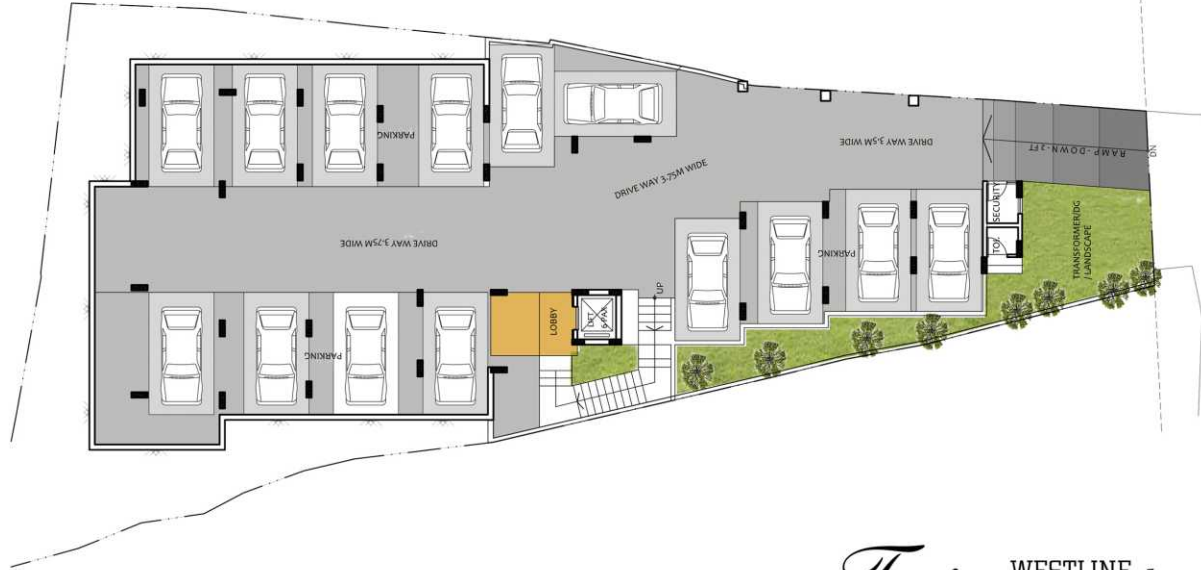
WESTLINE BUILDERS PVT LTD  
First Floor, Mangalore Gate Building  
Kankanady Junction, Mangalore 575002

PH: 0824 2444 444  
EM: properties@westlinebuilders.com

www.westlinebuilders.com



NORTH



BASEMENT/STILT  
CAR PARKING PLAN

WESTLINE  
*Fairmont*  
KADRI...



WESTLINE BUILDERS PVT LTD  
First Floor, Mangalore Gate Building  
Kankanady Junction, Mangalore 575002

PH: 0824 2444 444  
EM: [properties@westlinebuilders.com](mailto:properties@westlinebuilders.com)

[www.westlinebuilders.com](http://www.westlinebuilders.com)

## OUR PROJECTS



WESTLINE SIGNATURE  
NANTHOOR, MANGALORE



WESTLINE SKYDALE  
BIKKARNAKATTE, MANGALORE



WESTLINE SPLENDID HOMES  
KULASHEKAR, MANGALORE



WESTLINE BONITA  
THOKKOTTU, MANGALORE



WESTLINE CONSTRUCTIONS & DEVELOPMENTS

Call  
2444 444

**WESTLINE CONSTRUCTIONS & DEVELOPMENTS PVT LTD**

Mangalore Gate Building, First Floor  
Kankanady Circle, Mangalore 575006

MO : 99022 03301

MO : 99000 33888

FX : 0824 2437 111

EM : [properties@westlinebuilders.com](mailto:properties@westlinebuilders.com)

[www.westlinebuilders.com](http://www.westlinebuilders.com)