

Live The Thrill!



**Recreation**

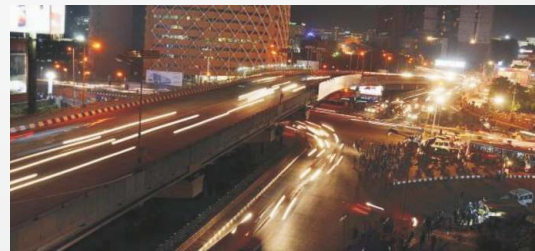
- Swimming Pool
- Fully furnished Gym
- Multi purpose hall
- Jogging track
- Landscaped garden
- Children play area



**Distance from Site:**

- HITEC City MMTS Station - 1 Km
- Forum Mall - 1 Km
- JNTU, Kukatpally - 2 Kms
- Meridian School - 2 Kms
- HITEC City - 2.5 Kms
- Image Hospitals - 4 Kms
- Financial District - 6 Kms

Live The Limelight !



**PROMOTERS**



**Trishala Infrastructure Pvt. Ltd.**  
(A subsidiary of Namishree Infrastructure & Projects Pvt. Ltd.)

The Grand, 3rd Floor, 6-3-1090/B/4  
Near Hotel Park, Raj Bhavan Road  
Somajiguda, Hyderabad - 500 082

Phone: +91-40- 6553 7217  
Email: trishalainfra7@gmail.com  
www.trishalainfra.com

Note : This brochure is purely a conceptual presentation and not a legal offering. The promoters reserve the right to make changes in elevation, specifications and plans as deemed fit.

Hitha Designs (+91-40-2330 6619) www.hitha.com



Live Life Large!



**Project Highlights**

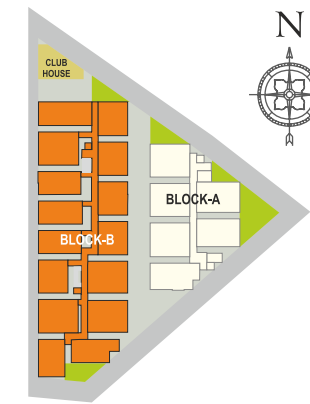
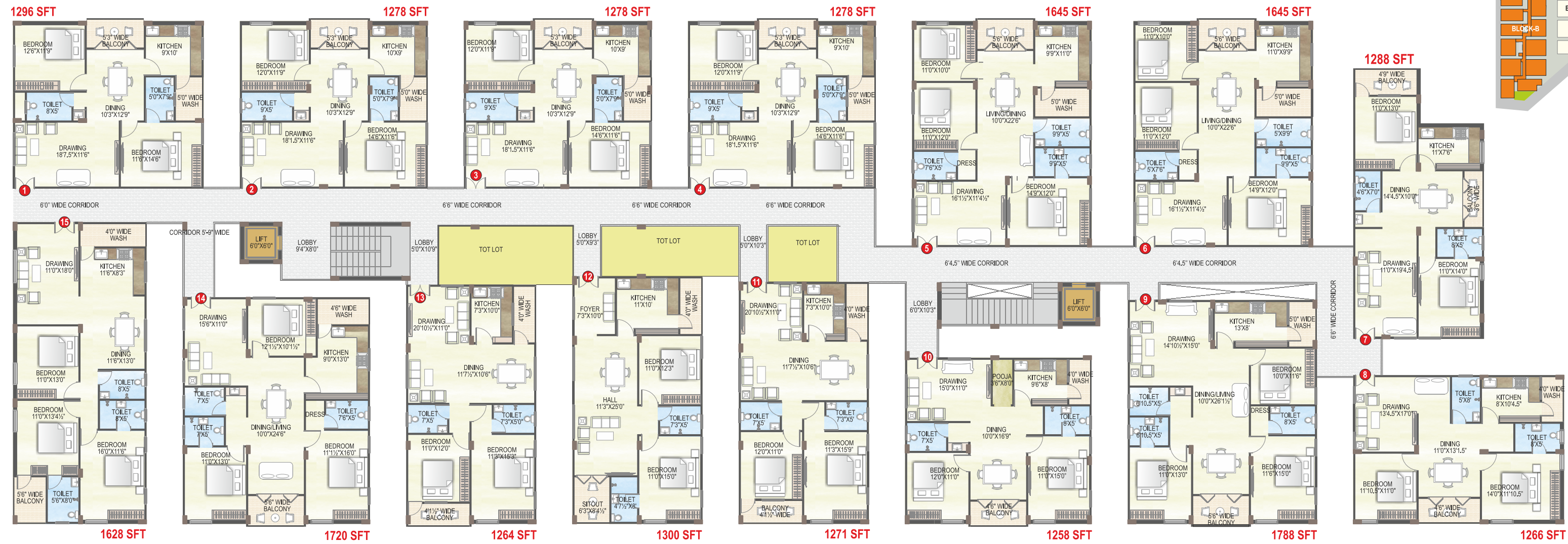
- A Gated Community project
- 2 Blocks, 6 Floors each
- 2 & 3 BHK apartments
- 1258 Sft -1720 Sft areas
- Premium quality construction
- Vaastu compliant
- No common walls
- Exclusive clubhouse
- Elegant landscaping
- Tot lots
- Spacious sit-outs, balconies
- Entrance Lobby
- Two-level parking
- 24-hr Security with Intercom
- Video door phone & CC cameras



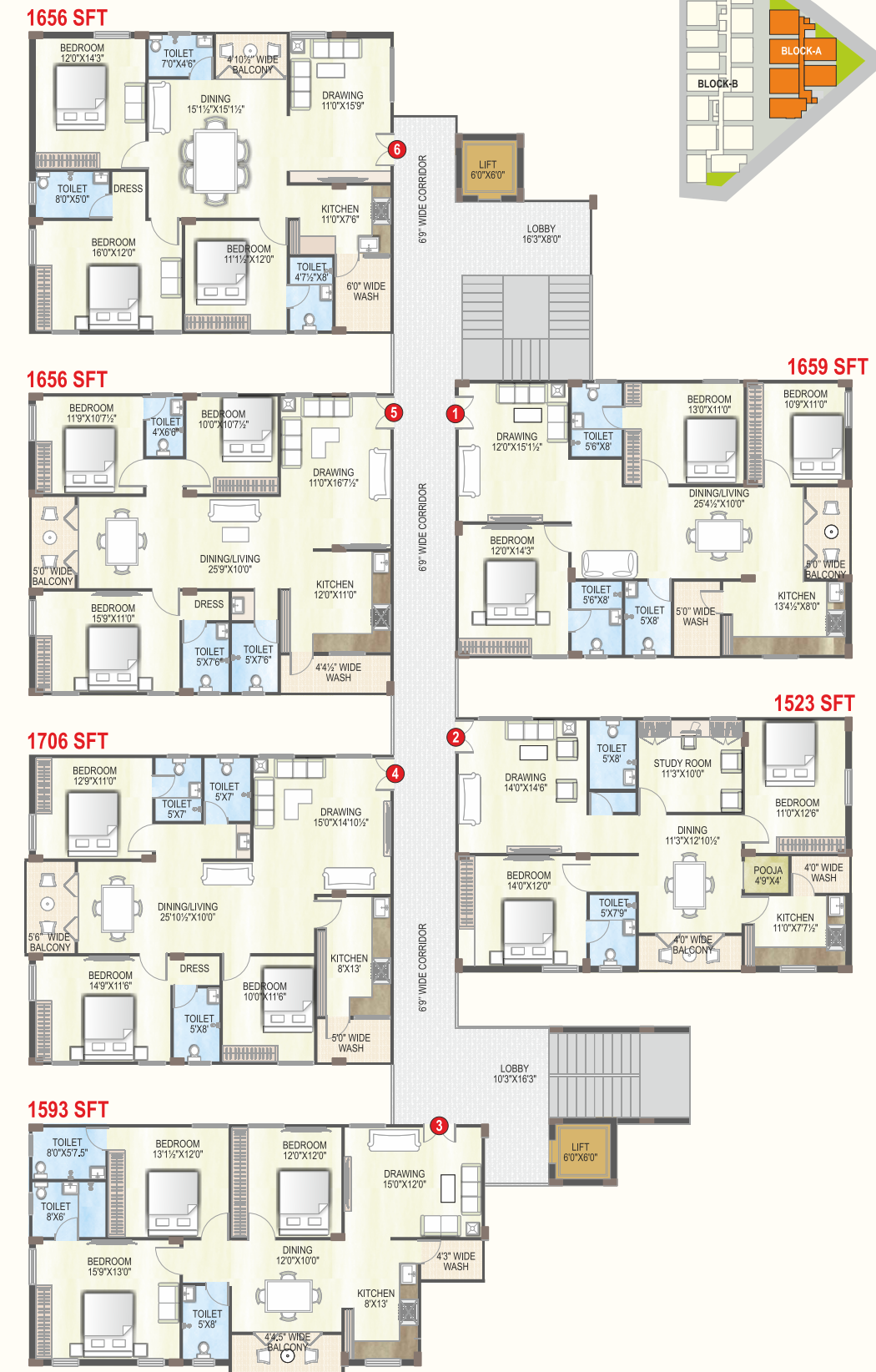
The majestic home is lovingly crafted to celebrate your spirit of achievement. Here luxury living finds an expression at its best. The feature-rich apartments are artfully designed with stunning elevation. With sun-soaked balconies and spacious sit-outs, an ambience of light and breeze fills apartment. Chiseled to perfection, an understated sophistication is all pervasive in **The Life**. Premium brands and finishes ensure that the home exude unmistakable grace, creating an aura of charm.



# TYPICAL FLOOR PLAN BLOCK B



# TYPICAL FLOOR PLAN BLOCK A



## Live The Spaces!

### You are the Space...

The premium two and three-bedroom apartments are lavish with state-of-the-art amenities, characterized by refined elegance and exceptional style rarely seen elsewhere. **The Life** strikes a fine balance between indoors and outdoors, design and quality, style and space.



GET A LIFE!