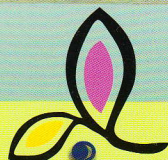


Extremely, Beautiful, Packed with Luxurious Features

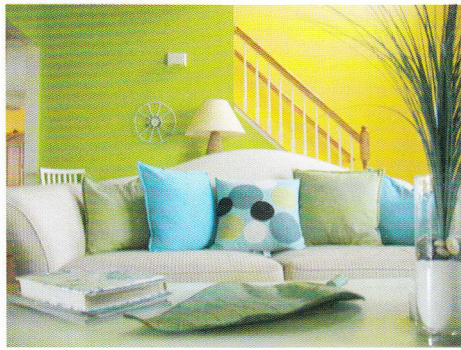
P R E S E N T I N G



संगमेश्वरी

OPP. P. L. DESHPANDE GARDEN, SINHGAD ROAD

Project By : M/s. Sumangal Associates & Shri Omkar Developers



Sangmeshwari is a contemporary expression of evergreen beauty. Homes that are exclusively aesthetic in their design; Created with loving care they are sure to reach to your heart. It is an expression of the sublime beauty where nature's endowments are used to the hilt to create an ambience that is sure to strike a chord - light up your face with a smile on the lips and twinkle in the eye!

Homes at **Sangmeshwari** are designed to imbibe and represent the beauty that lies in and around the project. Shaped with careful loving attention to detail, the emphasis being on optimum utilization of space, abundant natural lighting and ample ventilation, life here is a mix of joyful moments and precious comfort. Experience pure bliss with the sound of chirping of birds mingled with the spirit of laughter and happiness, only at **Sangmeshwari**.

Extremely, Beautiful, Packed with Luxurious Features

Specifications

- **Structure :**
R.C.C. frame structure.
- **Masonry :**
6" thick brick masonry for external and internal walls.
Neeru finish internal plaster and sand faced external plaster.
- **Doors :**
Decorative main entrance door with wooden frame with brass fittings. Internal flush door with plywood frame with standard fittings. Granite door frame for bath, toilet & W. C.
- **Windows :**
Powder coated aluminium sliding windows three track with M.S. grills with green marble frame.
- **Flooring :**
Vitrified flooring for entire flat. Anti-skid flooring for toilet & terraces.
- **Kitchen :**
Granite kitchen platform with stainless steel sink and vitrified tiles dado up to lintel level.
- **Bath/Toilet:** Coloured glazed tiles dado up to full height in bath & up to 4' height in W C. Hot and cold mixer unit in bath & toilet.
- **Electrical:** Concealed wiring in all rooms with adequate points, TV & Tele. point in living. AC point in master bedroom.
- **Painting :** External cement paint finish and internally oil bound.
- **Lift :** Lift of standard make with back- up.
- **Parking :** Adequate parking space inside & outside of building.



Completed Project By Our Group - Opp. P. L. Deshpande Garden, Pune

Shukratara • Nilambari • Kadambari • Shwetambari
Gulmohar • Shatrunjay • Parijatak • Devgiri
Ajinkyatara • Shivneri • Yamunashree



P. L. Deshpande Garden- Sinhgad Road



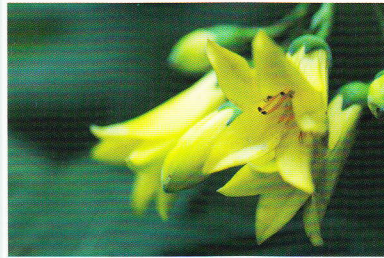
Come Home to Luxury, come home to SERENITY !

LOCATION MAP

NOT TO SCALE



Site : P. No. 36 A, S. No. 120 A+B, Sinhgad Road, Parvati, Pune.



@ Drive Distances :
Swargate- 3 Min.
Karve Road- 5 Min.
Sinhgad Institute- 10 Min.
Mumbai- Bangalore By pass- 10 Min.

For Bookings Contact :



Sumangal Associates

Shri Omkar Developers

Site : P. No. 36 A, S. No. 120 A+B, Sinhgad Road, Parvati, Pune

Cell. : 9326067384.