



2 & 3 RHK PREMIUM APARTMENTS
SHOPS | OFFICE SPACES



2 & 3 RHK PREMIUM APARTMENTS
SHOPS | OFFICE SPACES

THE ICON OF CENTRAL KOTHRUD

Located in the heart of a buzzing suburb, right beside Mrityunjayeshwar Mandir on Karve Road, Success Square is the new landmark of today's Kothrud. With premium residences and thoughtfully envisioned commercial spaces, it truly reflects the contemporary lifestyle & joyful verve you would like to adapt with your new address.

AMENITIES



Children's Play Area



Designer Entrance / Exit Gate



Gymnasium



Roof Top Terrace with
Banquet Area



CCTV in Building Periphery
at Ground Level



Designer Entrance Lobbies
& Passages at Parking Level
& Every Floor



DG backup for Lifts,
Common Lighting & Water Pumps



Centrally Controlled Cable TV
Connections for the Entire Society



SPECIFICATIONS : RESIDENTIAL



FLOORING

- 600 x 600 vitrified tiles flooring for living, kitchen, dining area & all rooms
- Mat finish tiles in toilets, dry terrace & attached terraces
- Laminated wooden finish flooring in master bedroom



DOORS & WINDOWS

- Panel doors for bathrooms & bedrooms
- Powder coated aluminium sliding windows with mosquito net



KITCHEN

- Granite top kitchen platform with stainless steel sink
- Glazed / ceramic tiles dado up to lintel level
- Branded CP fittings
- Provision for water purifier



BATHROOM

- Branded CP fittings & sanitary ware
- Dado tiles up to lintel level
- Granite door frames
- Provision for exhaust fan
- Solar water heater connection to master bedroom toilet



ELECTRICAL FITTING

- Branded MCB & ELCB (Earth Leakage Circuit Breaker) for apartment
- Concealed fire resistant high quality copper wiring
- Adequate light points with branded modular switches
- TV & telephone point in living room & master bedroom
- Power points in terraces / dry balcony for washing machine



PAINTING

- Texture paint for external walls O.B.D. paint on internal walls



OTHER

- Intercom
- Individual video phone
- Firefighting as per norms
- Branded make lifts with backup
- Earthquake resistant structure
- 125 mm thick block work
- Double coat sand faced plaster for external surface
- Gypsum finish for internal walls
- Ceiling – POP finish



SPECIFICATIONS : COMMERCIAL



- R.C.C.
- Earthquake resistance structure as per norms
- Large span grids giving flexibility of spaces
- Lifts
- Good quality elevators



FINISHING

- Internal
 - a) Gypsum finish with 2 coats of OBD paint
 - b) Laminated finish / glass main door for all offices
- External
 - a) 2 coats of sand faced plaster and 2 coats of acrylic paint
 - b) Structural glazing and ACP cladding as per elevation



OTHER

- 100 DG backup for common area & all units
- Surveillance systems for outdoor common areas for security
- Service toilets
- Toilets for offices



NET PUC

Opexior

Meta Solutions

FlexJobs

WOODDUBE

Social

FitThings

Creative

Event

Business

Media

Design

Lifestyle

Fashion

Vogue

Guests

Shoes

Clothing

Shoes



OUR OTHER STUNNERS KOTHRUD

SHIVALIK KARVE ROAD

2 & 3 RHK Premium
Residences

MAHARERA Reg. No. : P52100014200

SERENITY PAUD ROAD

1, 2 & 3 RHK Apartments
Offices | Showrooms

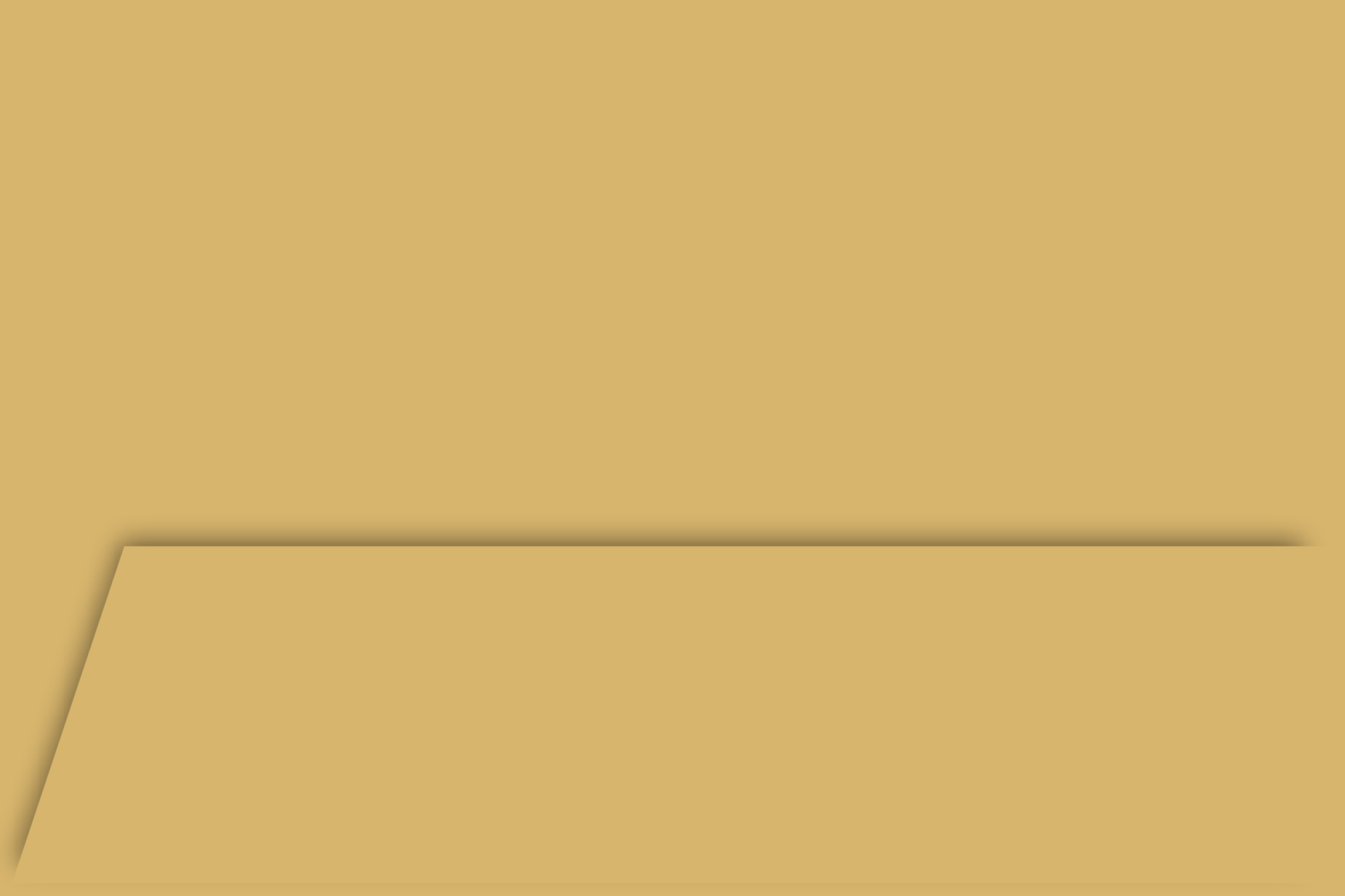
MAHARERA Reg. No. : P52100001810

SPECTRA PAUD ROAD

OFFICES | SHOWROOMS



MAHARERA Reg. No. : P52100014363



Location Map



Key Distances

City Pride Kothrud:	7 Minutes
Yashwantrao Chavan Natyagraha:	5 Minutes
Kothrud Bus Stand:	6 Minutes
Chandani Chowk:	13 Minutes
Deccan:	15 Minutes
Prabhat Road:	10 Minutes
Dinanath Mangeshkar Hospital:	12 Minutes

CREDITS

Architect : Advantage Architects & Gohad Architects | Structural Consultant : G A Bhilare
 Plumbing & Electrical Consultant : Siddhivinayak MEP | Legal Advisor : Sunil Zunjarrao



Site : Near Mrityunjay Mandir, Before Karve Statue, Karve Road, Kothrud, Pune – 411038
Contact : 020 25433363 / 9021 665 665 | **Email :** sales@saarrthigroup.com
Corporate Office : Geetai Sankul, 2nd Floor, Paud Road, Near Reliance Fresh,
 Pune - 411038, Maharashtra, India.



MAHARERA Reg. No. :
P52100001813
 Available at website -
<http://www.maharera.mahaonline.gov.in>

Disclaimer : The information in this advertisement is indicative of the kind of development that is proposed. Subject to the approval of the authorities or in the interest of continuing improvement, the developers reserve the right to change the layout, plans, specifications or features without prior notice or obligations.



Layout plan



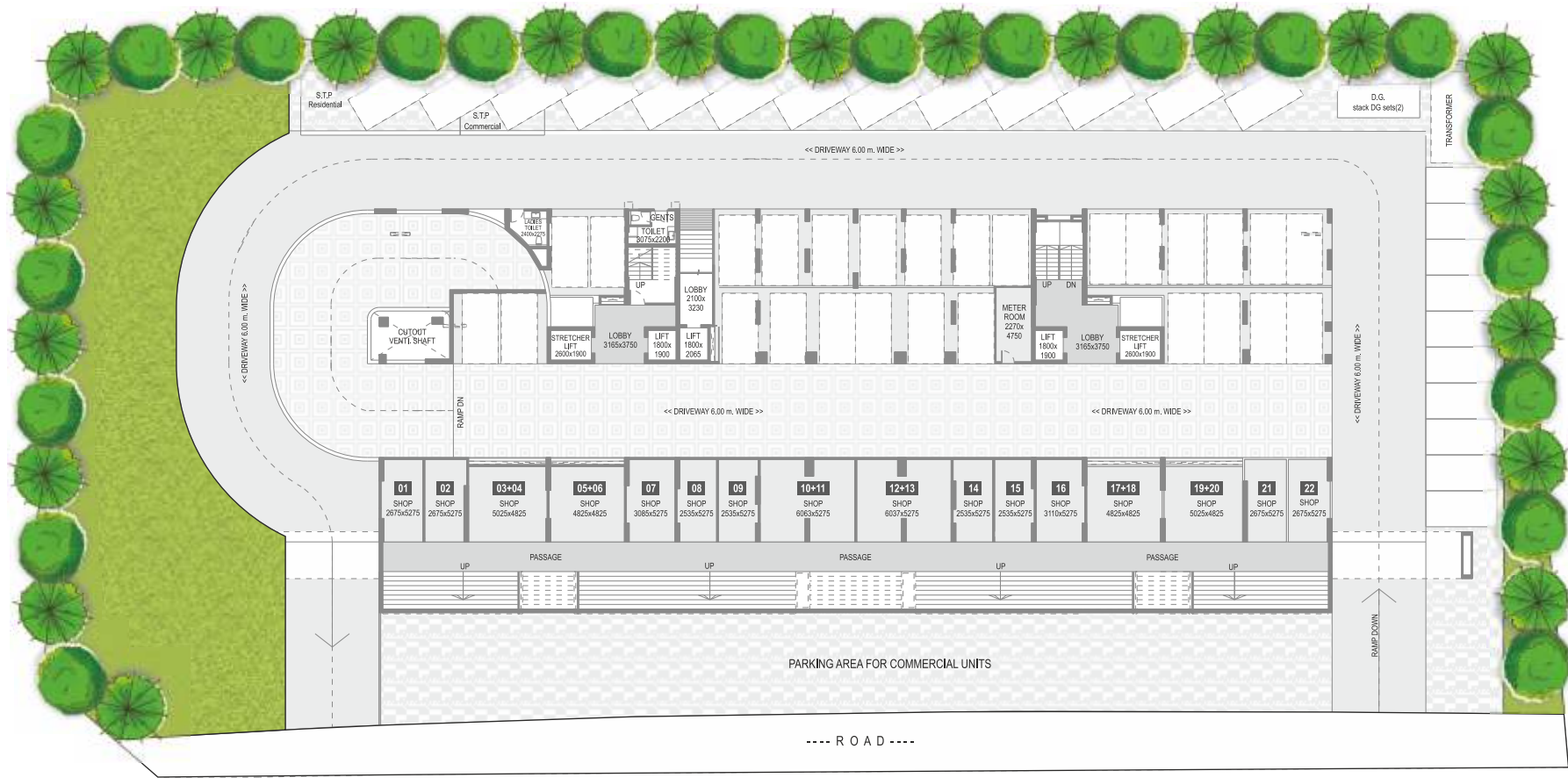
2 & 3 RHK PREMIUM APARTMENTS
SHOPS | OFFICE SPACES



NOTES: 1. All areas are mentioned in metric system. 2. All areas are measured from wall finish to wall finish, considering 20 MM thick internal gypsum, 25 MM thick external plaster and 25 MM thick toilet tile finish. 3. Internal brick work and columns are included in carpet area. 4. Balconies, terraces and enclosed balconies areas are mentioned separately. 5. Furniture is for indicated purpose. Service shaft & Electrical equipment/fixture location may vary as per site condition. 6. Variation in the dimensions may be observed as Sanctioned drawings mentions unfinished dimensions.



MAHARERA Reg. No. :P52100001813
Available at website - <http://www.maharera.mahaonline.gov.in>



LOWER GROUND FLOOR

Shop Nos	Carpet sq.m	Total area sq.m	Shop Nos	Carpet sq.m	Total area sq.m	Shop Nos	Carpet sq.m	Total area sq.m	Shop Nos	Carpet sq.m	Total area sq.m
1	14.11	14.11	7	16.4	16.4	12+13	31.84	31.84	17+18	23.28	23.28
2	14.11	14.11	8	13.37	13.37	14	13.37	13.37	19+20	24.24	24.24
3+4	24.24	24.24	9	13.37	13.37	15	13.37	13.37	21	14.11	14.11
5+6	23.28	23.28	10+11	31.97	31.97	16	16.4	16.4	22	14.11	14.11

NOTES: 1. All areas are mentioned in metric system. 2. All areas are measured from wall finish to wall finish, considering 20 MM thick internal gypsum, 25 MM thick external plaster and 25 MM thick toilet tile finish. 3. Internal brick work and columns are included in carpet area. 4. Balconies, terraces and enclosed balconies areas are mentioned separately. 5. Furniture is for indicated purpose. Service shaft & Electrical equipment/fixture location may vary as per site condition. 6. Variation in the dimensions may be observed as Sanctioned drawings mentions unfinished dimensions.



MAHARERA Reg. No. :P52100001813
 Available at website - <http://www.maharera.mahaonline.gov.in>



2 & 3 RHK PREMIUM APARTMENTS
 SHOPS | OFFICE SPACES



UPPER GROUND FLOOR

Shop Nos	Carpet sq.m	Mezz.Carpet sq.m	Terrace sq.m	Total area sq.m	Shop Nos	Carpet sq.m	Mezz.Carpet sq.m	Terrace sq.m	Total area sq.m
1	76.96	38.54	0	115.5	7	41.7	21.47	0	63.17
2	143.98	35.37	90	179.35	8	60.66	34.1	0	94.76
3	58.4	33.96	0	92.36	9	40.79	23.12	0	63.91
4	40.79	23.12	0	63.91	10	58.4	33.96	0	92.36
5	60.66	34.1	0	94.76	11	69.97	35.37	0	105.34
6	47.54	21.47	0	69.01	12	75.71	38.54	0	114.25

NOTES: 1. All areas are mentioned in metric system. 2. All areas are measured from wall finish to wall finish, considering 20 MM thick internal gypsum, 25 MM thick external plaster and 25 MM thick toilet tile finish. 3. Internal brick work and columns are included in carpet area. 4. Balconies, terraces and enclosed balconies areas are mentioned separately. 5. Furniture is for indicated purpose. Service shaft & Electrical equipment/fixture location may vary as per site condition. 6. Variation in the dimensions may be observed as Sanctioned drawings mentions unfinished dimensions.



2 & 3 RHK PREMIUM APARTMENTS
SHOPS | OFFICE SPACES



MAHARERA Reg. No. :P52100001813
Available at website - <http://www.maharera.mahaonline.gov.in>



2ND FLOOR PLAN



Office Nos	Carpet sq.m	Enclosed Balc. sq.m	Total area sq.m	Office Nos	Carpet sq.m	Enclosed Balc. sq.m	Total area sq.m	Flat Nos	Carpet sq.m	Enclosed Balc. sq.m	Terrace sq.m	Dry Terr. sq.m	Lobby sq.m	Cupboard sq.m	Total area sq.m
201	50.47	11.77	62.24	207	15.15	6.44	21.59	#201	65.55	14.79	15.71	2.24	1.82	1.75	101.86
202	46.31	10.8	57.11	208	45.37	9.68	55.05	#202	43.85	8.81	11.94	1.8	0	0.89	67.29
203	44.46	10.37	54.83	209	30.71	6.56	37.27	#203	43.85	8.81	11.94	1.8	0	0.89	67.29
204	30.22	7.06	37.28	210	45.18	9.64	54.82	#204	66.37	15.46	14.66	2.24	4.03	2.22	104.98
205	44.65	10.41	55.06	211	47.06	10.04	57.1								
206	14.67	6.93	21.6	212	51.29	10.94	62.23								

NOTES: 1. All areas are mentioned in metric system. 2. All areas are measured from wall finish to wall finish, considering 20 MM thick internal gypsum, 25 MM thick external plaster and 25 MM thick toilet tile finish. 3. Internal brick work and columns are included in carpet area. 4. Balconies, terraces and enclosed balconies areas are mentioned separately. 5. Furniture is for indicated purpose. Service shaft & Electrical equipment/fixture location may vary as per site condition. 6. Variation in the dimensions may be observed as Sanctioned drawings mentions unfinished dimensions.



MAHARERA Reg. No. :P5210001813
Available at website - <http://www.maharera.mahaonline.gov.in>



2 & 3 RHK PREMIUM APARTMENTS
SHOPS | OFFICE SPACES



EVEN FLOOR PLAN

Flat Nos	Carpet sq.m	Enclosed Balc. sq.m	Terrace sq.m	Dry Terr. sq.m	Lobby sq.m	Cupboard sq.m	Total area sq.m	Flat Nos	Carpet sq.m	Enclosed Balc. sq.m	Terrace sq.m	Dry Terr. sq.m	Lobby sq.m	Cupboard sq.m	Total area sq.m
#601	65.55	14.79	15.71	2.24	1.82	1.75	101.86	#605	66.16	15.31	14.66	2.24	4.34	2.2	104.91
#602	43.85	8.81	11.94	1.80	0	0.89	67.29	#606	72.92	9.11	12.46	2.55	0	0.89	97.93
#603	43.85	8.81	11.94	1.80	0	0.89	67.29	#607	51.5	8.8	10.10	1.80	0	0.82	73.02
#604	66.4	15.46	14.66	2.24	4.03	2.22	105.01	#608	69.9	15.38	15.26	2.24	4.34	2.28	109.4

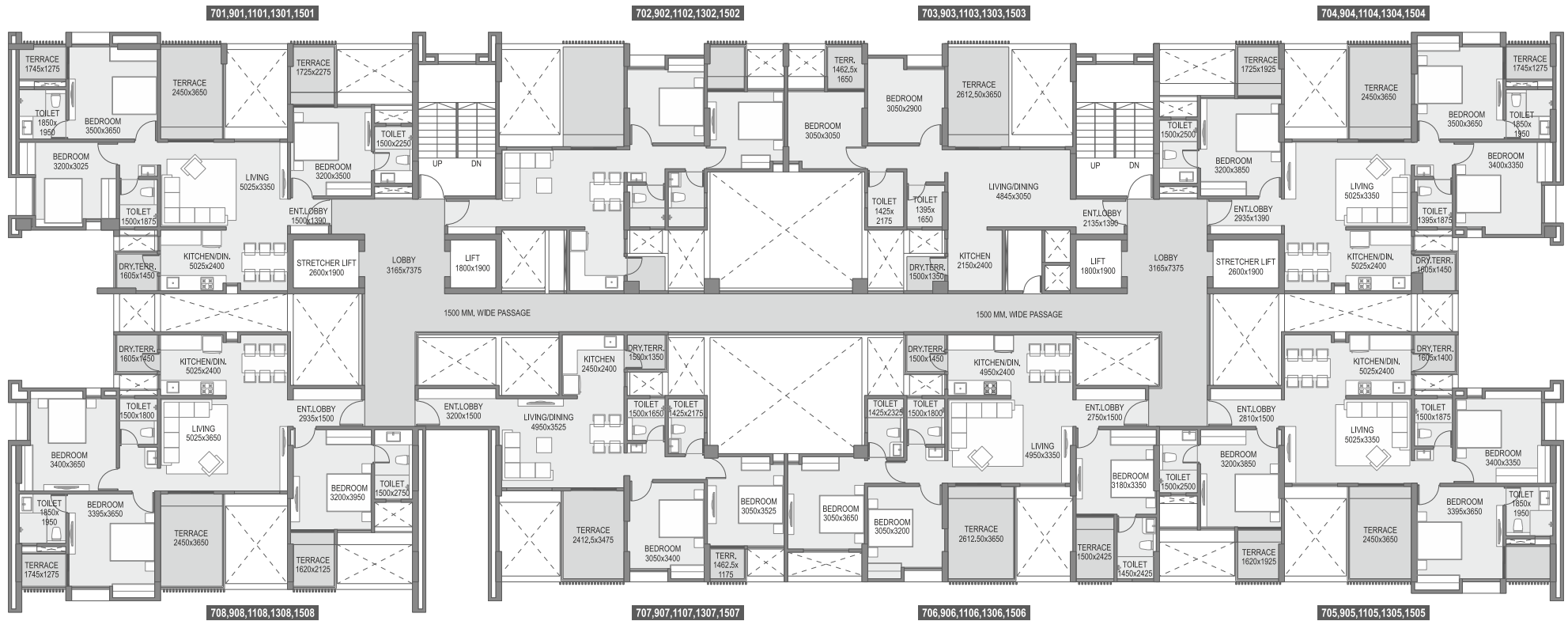


2 & 3 RHK PREMIUM APARTMENTS
SHOPS | OFFICE SPACES



MAHARERA Reg. No. :P5210001813
Available at website - <http://www.maharera.mahaonline.gov.in>

NOTES: 1. All areas are mentioned in metric system. 2. All areas are measured from wall finish to wall finish, considering 20 MM thick internal gypsum, 25 MM thick external plaster and 25 MM thick toilet tile finish. 3. Internal brick work and columns are included in carpet area. 4. Balconies, terraces and enclosed balconies areas are mentioned separately. 5. Furniture is for indicated purpose. Service shaft & Electrical equipment/fixture location may vary as per site condition. 6. Variation in the dimensions may be observed as Sanctioned drawings mentions unfinished dimensions.



ODD FLOOR PLAN

Flat Nos	Carpet sq.m	Enclosed Balc. sq.m	Terrace sq.m	Dry Terr. sq.m	Lobby sq.m	Cupboard sq.m	Total area sq.m	Flat Nos	Carpet sq.m	Enclosed Balc. sq.m	Terrace sq.m	Dry Terr. sq.m	Lobby sq.m	Cupboard sq.m	Total area sq.m
#701,901,1101,1301,1501	65.73	15.13	15.21	2.32	1.82	1.75	101.96	#705,905,1105,1305,1505	66.49	15.78	14.48	2.32	4.34	2.2	105.61
#702,902,1102,1302,1502	43.9	9.1	11.94	2.02	0	0.89	67.85	#706,906,1106,1306,1506	73.27	8.8	13.17	2.17	0	0.86	98.27
#703,903,1103,1303,1503	43.9	9.1	11.94	2.02	0	0.89	67.85	#707,907,1107,1307,1507	52.49	8.98	10.10	2.02	0	0.79	74.38
#704,904,1104,1304,1504	66.54	15.82	14.62	2.32	4.03	2.2	105.53	#708,908,1108,1308,1508	70.29	15.85	14.83	2.32	4.34	2.24	109.87

NOTES: 1. All areas are mentioned in metric system. 2. All areas are measured from wall finish to wall finish, considering 20 MM thick internal gypsum, 25 MM thick external plaster and 25 MM thick toilet tile finish. 3. Internal brick work and columns are included in carpet area.

4. Balconies, terraces and enclosed balconies areas are mentioned separately. 5. Furniture is for indicated purpose. Service shaft & Electrical equipment/fixture location may vary as per site condition. 6. Variation in the dimensions may be observed as Sanctioned drawings mentions unfinished dimensions.



2 & 3 RHK PREMIUM APARTMENTS
SHOPS | OFFICE SPACES



MAHARERA Reg. No. :P52100001813
Available at website - <http://www.maharera.mahaonline.gov.in>



2 RHK



NOTES: 1. All areas are mentioned in metric system. 2. All areas are measured from wall finish to wall finish, considering 20 MM thick internal gypsum, 25 MM thick external plaster and 25 MM thick toilet tile finish. 3. Internal brick work and columns are included in carpet area.

4. Balconies, terraces and enclosed balconies areas are mentioned separately. 5. Furniture is for indicated purpose. Service shaft & Electrical equipment/fixture location may vary as per site condition. 6. Variation in the dimensions may be observed as Sanctioned drawings mentions unfinished dimensions.



MAHARERA Reg. No. :P52100001813
Available at website - <http://www.maharera.mahaonline.gov.in>



3 RHK



**SUCCESS
SQUARE**
Karve Road, Kolhrud, Pune

2 & 3 RHK PREMIUM APARTMENTS
SHOPS | OFFICE SPACES

NOTES: 1. All areas are mentioned in metric system. 2. All areas are measured from wall finish to wall finish, considering 20 MM thick internal gypsum, 25 MM thick external plaster and 25 MM thick toilet tile finish. 3. Internal brick work and columns are included in carpet area.

4. Balconies, terraces and enclosed balconies areas are mentioned separately. 5. Furniture is for indicated purpose. Service shaft & Electrical equipment/fixture location may vary as per site condition. 6. Variation in the dimensions may be observed as Sanctioned drawings mentions unfinished dimensions.



MAHARERA Reg. No. :P52100001813
Available at website - <http://www.maharera.mahaonline.gov.in>