

A Project by



For those who like a high class secured lifestyle...



ROYAL
avenue
your dream destination



*I*t takes talent, passion
and experience to create
a landmark

2/3 BHK APARTMENTS | CLUB HOUSE




ROYAL
avenue
your dream destination

- 3 Sided Open Plot
- High Class Security Systems
- Smart Home Features
- Well Equipped Club House
- Semi Furnished Flats





ROYAL
avenue
your dream destination



Let's us be a part of our homes to experience the better living.

Royal Avenue shows what the future could have looked like. It will break the monotony of present lifestyle by creating distinct areas with high aesthetic appeal. It is designed to provide you ultimate freedom you've always wanted. Here, it'll be easy to shake away the stress of a hectic day and lead you into a world of both serenity and exhilaration. Royal Avenue 2BHK,3BHK apartments are well laid out with maximum utilization of space, huge balconies, well ventilated rooms and ample daylight, perfection in planning and uniqueness in design has created abodes which are exotic as well enchanting. Unbound conveniences and adorable amenities at Royal Avenue add hues of happiness to everybody mundane life.



WELL
EQUIPPED
CLUB HOUSE



HIGH CLASS
SECURED
LIFESTYLE



HOME
AUTOMATION
SYSTEM



ROYAL
avenue
your dream destination

@ Krishna Sagar, Patrakar Colony,
Mansarovar, Jaipur





Comfort- Oriented Design

It is a highly functional bedroom that exhibits high level of comfort and luxury. Its features will suit each one's requirements. Styled with new aesthetic appeal and design, its looks will push monotony aside and grace the home. It restores the watchful presence and creates new visions and spaces.



luxury looks like a dream

BATHROOM

Sparkling Clean!

It reconciles both design and tranquillity with its shape and finish. It'll rejuvenate your body and revive your senses. So, get ready to add a refreshingly distinct touch to your lifestyle. It guarantees complete relaxation right at home.

- Designer Ceramic tiles in toilet up to 7' height on wall
- Anti-skid Ceramic Tiles on Floor in toilet
- Premium Quality C.P. fitting
- Premium Quality Sanitary Ware



Where the heart of every woman lives...

Kitchen with much coveted ease and comfort, cooking can be fun and effortless. It's a place which creates tastes. It's a place which makes it every woman's style statement. Design feature that will make your life easier in the kitchen.



KITCHEN





Royal Avenue will attract admirers from far and wide

Royal Avenue is vastly spread over, infusing greenery and freshness into your home in an easy manner. It is all about blending the outdoors with the indoors in this sprawling Royal Avenue. It reveals in gorgeous views and magnificent interiors. It seamlessly combines elements of the nature into the design of the apartments.

**ROYAL**
avenue
your dream destination





Fine Security Systems

Given the stress and chaos that we battle every day, Royal Avenue brings you whole new experience of secured living for all, from child to adult. It will bring you in mood to sing. A secured home that reflects who you are.

- Laser Beam based parameter Security System
- Round the Clock manned security with 24 Hours live surveillance and re recording through C.C.TV cameras located at various places in the building
- Access Control System at main entrance lobby
- Intercom / EPBAX facility
- Video door phone in Each Flat
- Emergency alarm System in each flat



Smart Home Automation System for digital life style

- Smart Home Automation System in Drawing & Dining Area
- Motion based lights in all Washrooms
- Smart L.P.G. Gas Detector
- Emergency Alarm system
- Fully Wi- Fi Enabled Building
- HD Multi Dwelling Unit (MDU) System with a single antenna in the building for the optimum T.V. Viewing



State of art club

Keep your self healthy &
Make your day more energetic



ROYAL
avenue
your dream destination

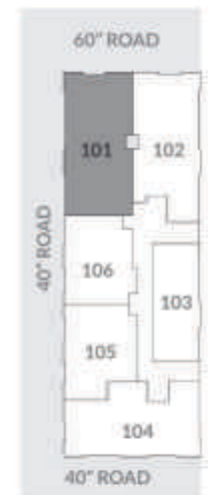


Classic styling with futuristic amenities

- A.C. Gymnasium cum Fitness Center
- Sauna, Jacuzzi
- Massage room, Steam Bath
- Yoga/ meditation room.
- Indoor Games room with Table Tennis, Pool table, Carom & Chess Board



ROYAL
avenue
your dream destination



Flat -No. 101
Area-1696.00 Sq.ft.



3 BHK



Flat -No. 102
Area-1633.00 Sq.ft.



3 BHK



Flat -No. 103
Area-963.00 Sq.ft.



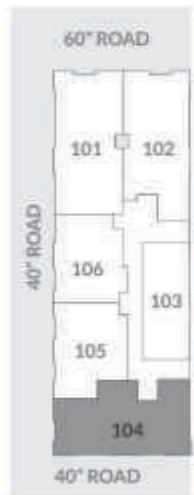
2 BHK



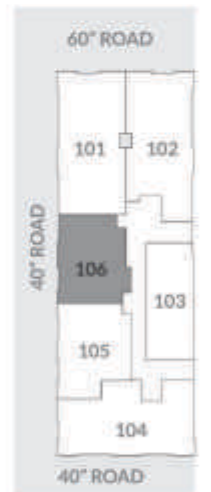
Flat -No. 104
Area-1602.00 Sq.ft.



3 BHK



Flat -No. 105
Area-1136.00 Sq.ft.

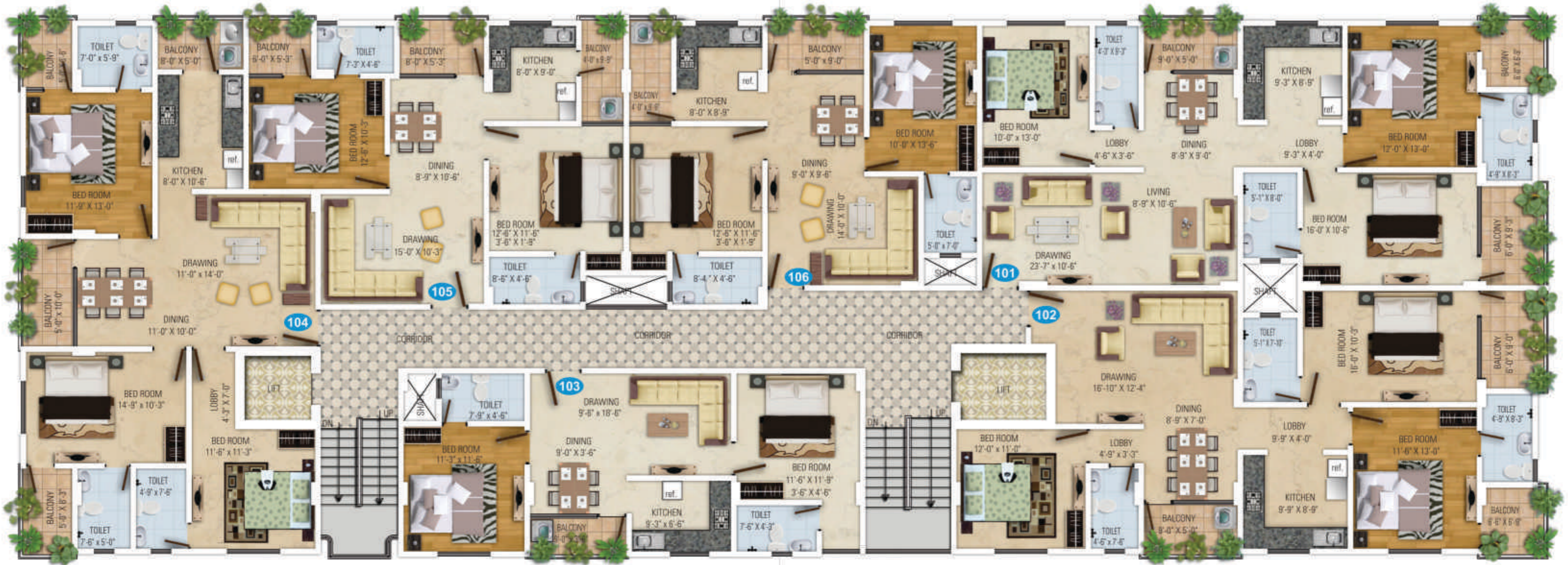


Flat -No. 106
Area-1073.00 Sq.ft.

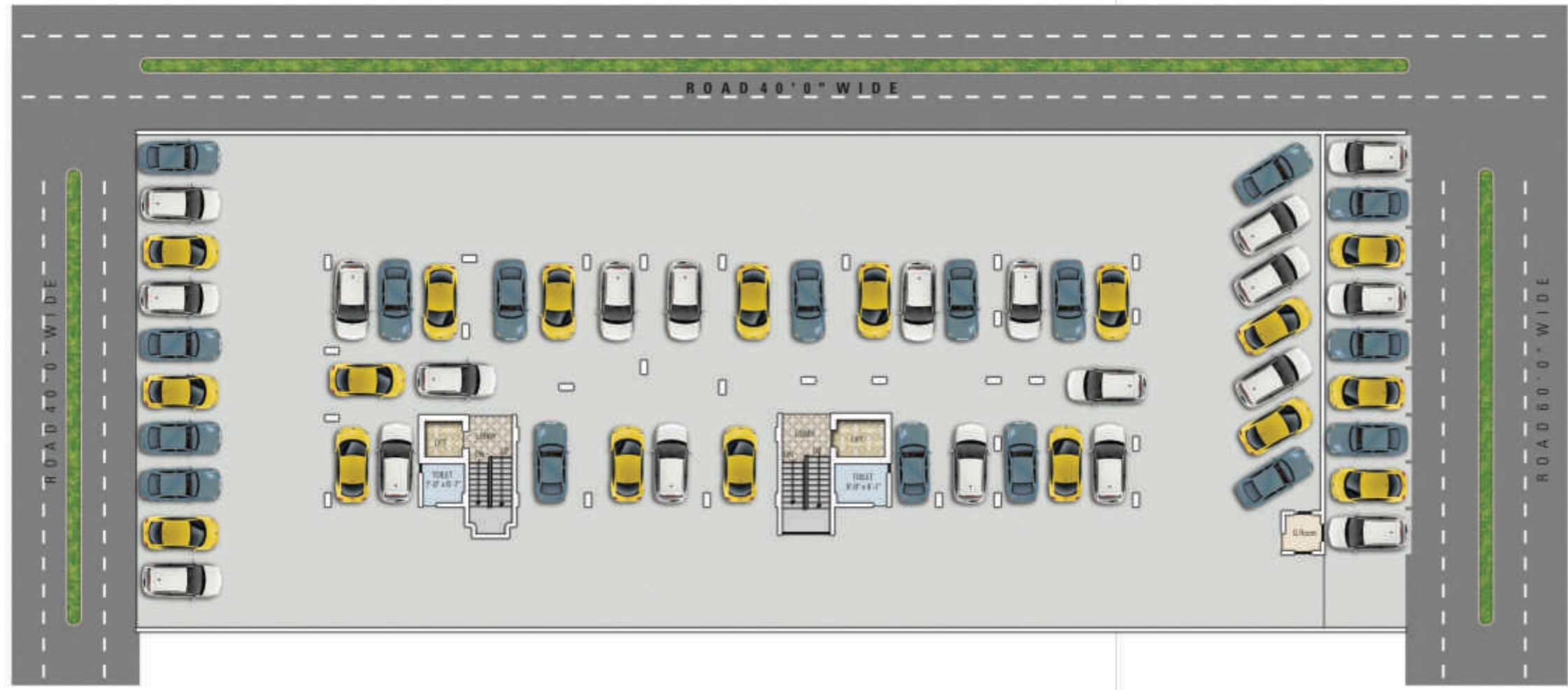


2 BHK





Typical Floor Plan (1st to 8th Floor)



Area Table

Flat No.	SBUA Area
101	1696
102	1633
103	963
104	1602
105	1136
106	1073



Stilt Floor Plan





Common Amenities:

- Two High Speed Automatic Elevators with Auto Rescue Device.
- A Well equipped Male & Female Health Club Consisting of A.C. Gymnasium cum Fitness Center, Sauna, Jacuzzi, Massage room, Steam Bath, and yoga/ meditation room.
- Indoor Games room with Table Tennis, Pool table, Carom & Chess Board
- Servant quarters/ Stores on Extra Cost with intercom facility
- Fully Wi-Fi Enabled Building
- 100% Power back-up in common areas
- Well Designer Entrance Gate & Impressive Lobby Area
- Multi Dwelling Unit (MDU) System with a single antenna in the building for the optimum T.V. Viewing



Specifications...

Structure:

- Earthquake resistant RCC framed structure
- Rain water harvesting system to recharge ground water level
- Appropriate fire fighting system and emergency exit through an extra staircase

Apartment Features:

- Vitrified Tiles/ Marble Flooring
- POP finish on wall & ceiling with cornices beadings & decorative flowers
- Premium Quality Distemper paint on wall & ceiling

Wood Work:

- 2 wardrobes in 3 bhk & 1 wardrobe in 2 bhk Flat.
- Aluminum/ Wooden Windows having glass panels.
- Premium Quality Designer Flush Doors.
- Designer fittings on doors & windows.

Washrooms:

- Designer Ceramic tiles in toilet up to 7' height on wall
- Anti -skid Ceramic Tiles on Floor in toilet
- Premium Quality C.P. fitting
- Premium Quality Sanitary Ware

Kitchen:

- Semi Modular Kitchen
- Black granite working counter
- Stainless steel sinks
- 2' Tiles dado above the counter
- Provision for geyser & R.O in kitchen

Electrical:

- Fire Retardant High Quality Wires & Cables
- Premium quality Modular Switches & Accessories
- Telephone Wiring in each Room for Landline & Broadband Connection
- Cable wiring in each room for DTH connection
- Fully Wi-Fi Enabled Building

Water Supply:

- Round the clock Water Supply by Overhead Storage Tank
- Under Ground Water Tank For additional Water Storage
- Rain Water Harvesting System to Maintain Ground Water Level

Sucured Smart Homes

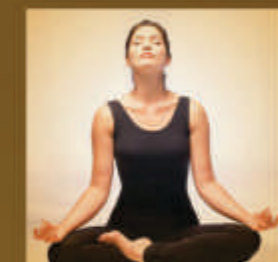
High Class Security Systems

- Laser Beam based parameter Security System
- Round the Clock manned security with 24 hours live surveillance and rerecording through C.C. TV cameras located at various places in the building
- Access Control System at main entrance lobby
- Intercom / EPBAX facility
- Video door phone in Each Flat
- Emergency alarm System in each flat



Smart Home Automation System for digital life style:

- Smart Home Automation System in Drawing & Dining Area
- Motion based lights in all Washrooms
- Smart L.P.G. Gas Detector
- Emergency Alarm system
- Fully Wi- Fi Enabled Building
- HD Multi Dwelling Unit (MDU) System with a single antenna in the building for the optimum T.V. Viewing



The Group...



The Promoters is a group of professional entrepreneurs in the construction industry. Though young, but the dynamism in their vision for changing the skyline of the city has given a thrust to their dream. With their distinctive style of management, in just a short span of 6 years, they have been able to grab more than 15 projects to their credit. All this has been possible due to their maintaining of stringent quality standards and time schedule. Their understanding of design features and spectacular effects distinguish their projects from most homes.

Royal Avenue is just another project where reliability and experience of the group combines with the innovation and finesse to bring to the city dweller luxurious homes.



Completed Project



Vardhman Apartments, Banipark



Western Heights, Shyam Nagar



Vardhman Residency, Ajmer Road



Vardhman Majesty, Shyam Nagar



Arihant Enclave, Ajmer Road



Arihant Residency, Ajmer Road



Siddarth Nagar, Malviya Nagar



Aastha Apartments, Nirman Nagar



Arihant Palm, Ajmer Road



Classic Residency, Vaishali Nagar



Royal Castle, Vaishali Nagar



Civil Lines



Narayan Vihar

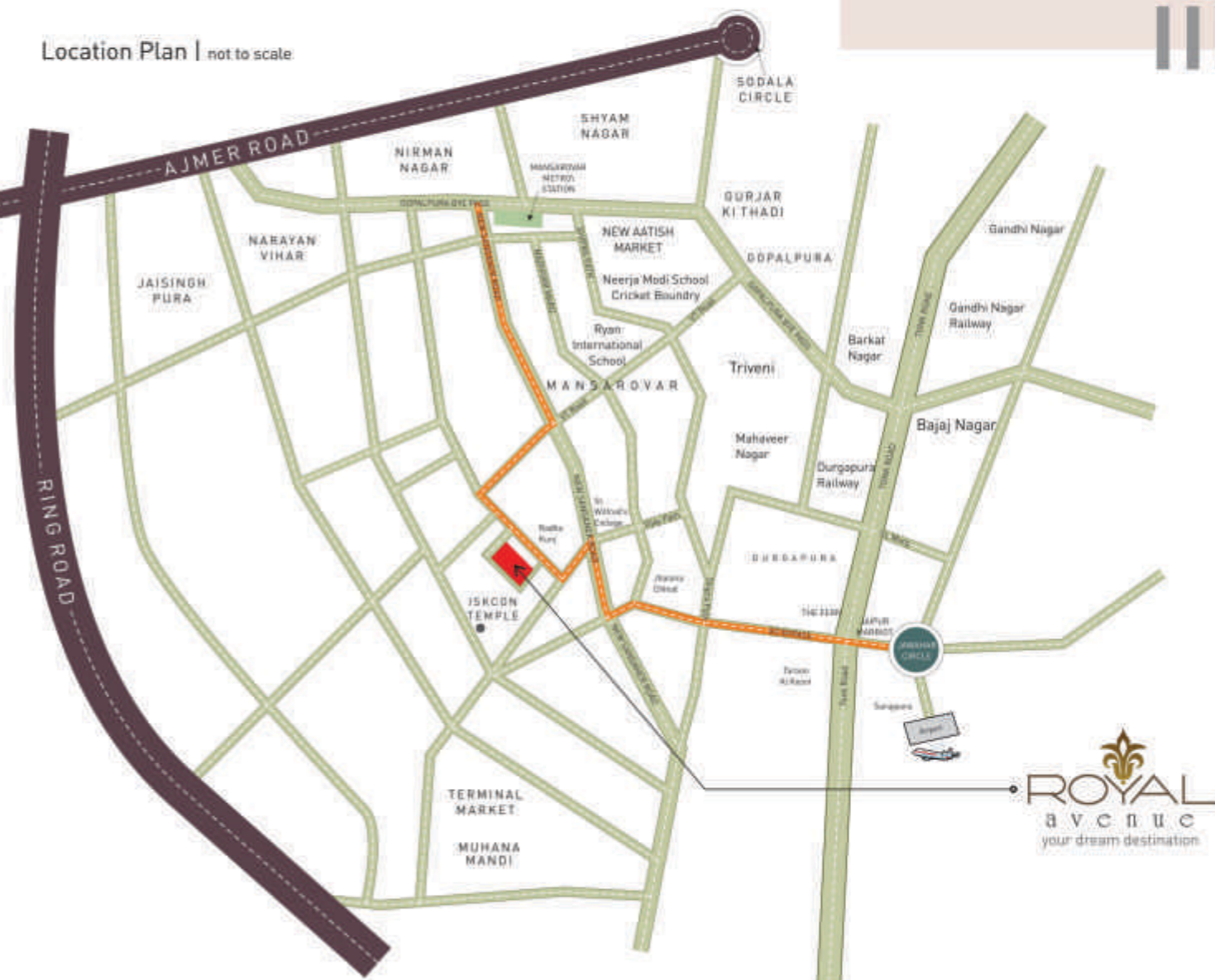


Tilak Nagar



Site : Krishna Sagar, Patrakar Colony, Mansarovar, Jaipur

Location Plan | not to scale



●
Builders and Developers



Ridhi Sidhi Prime Homes Pvt. Ltd.

Regd. Office : 22, Suraj Nagar East Civil Lines, Jaipur

Corporate Office : 81, Gyan Vihar Colony,

Nirman Nagar, Jaipur Ph. No. 0141-4015550

www.kotechagroup.org www.ckddevelopers.com

●
For More Details Contact

+91 90019 19111

●
Promoters

Amit Kotecha

Kuldeep Kotecha

A B Dangayach

Amit Gupta

Ramesh Chand Jain

●
Architect

SPACE GRID,

Ph.: 93149-18766, 93145-10603

●
Interior Designer

IDS

Shilpi Dhariwal, 9828131092

Disclaimer: This Brochure is purely conceptual and not a legal offering. Further the Promoters/Architect reserve the right to add/delete/ modify any details/specifications/elevation mentioned here in.