



Redefine the lifestyle

**BCM**  
*Paradise*



Premium Apartment Township of Five Buildings

Between Bombay Hospital & Advanced Academy (Opp. Scheme 134) Nipania, Indore (M.P.)



## Success Stories



BCM's  
**HEALTH  
Island**  
*Destination - Good Health*



**BCM HEIGHTS**  
*The advent of a new lifestyle*



**BCM CITY**  
THE COMPLETE CITY

### The BCM Philosophy

Our founders, Late Shri Badalchandji Mehta and Shri Jugrajji Mehta, were grand visionaries. They laid the foundation stone of a specialized syndicate engrained with honesty, trust, devotion and personal involvement with our esteemed customers.

For the past more than 50 years, the BCM Group has witnessed glorious success and prosperity, as a multi-faceted entity which has achieved excellence in the realms of Construction, Food Processing and Education.

Through its earnest endeavour, BCM has left a lasting imprint on the business scenario.

BCM Group takes pride in its commitment to authenticity and delivering invaluable services to our treasured clientele, hence finding a cherished place in their hearts.



# BCM *Paradise*



Premium Apartment Township of Five Buildings

ALL FLATS ARE COLUMN FREE

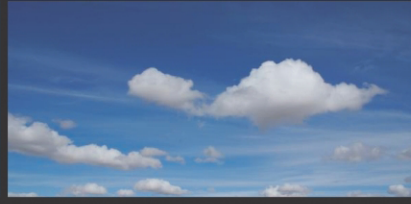
EVERY FLAT IS A CORNER FLAT

EVERY FLAT IS GARDEN FACING

PROJECT SITUATED ON 100 FT. MAIN RD.







There is a non-conventional approach to the planning and layout of this residential complex. BCM Paradise is planned and designed in five different blocks, which are self contained in all the respects of modern lifestyle, housed around three landscaped, lush green central courts. These courts formed the key elements of this concept.

The courts are connected through path-ways and lawns making a large space for community, social and family gatherings, that is must needed in current scenario in developing city like Indore.

These courts act as rendezvous with nature and comfort, making the space quite essential one for the user, for habiting.

Flat at BCM Paradise are so planned that they are naturally lit and ventilated along with designed to accommodate all the needs of modern and spacious living.

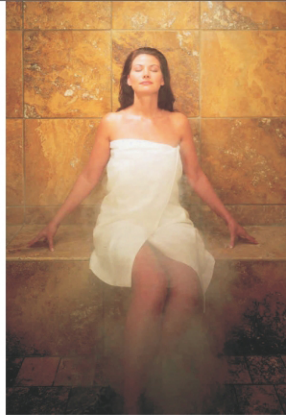
The exterior of the building blocks are definitely modern, with clear lines and pure white walls, introducing the curves at the corners. Form of the building is contoured, that helps to soften the harsh straight lines, for making the complex an ideal place to live in for new home buyers.

The various blocks of BCM Paradise are named after five basic elements which form a human being and are essential for his existence.

- *The Earth*      **Bhoomi**
- *The Air*        **Vaayu**
- *The Sky*        **Gagan**
- *The Water*     **Neer**
- *The Fire*        **Surya**

And with that we finally complete our residential complex...BCM Paradise.





## AMENITIES



Community Centre



Indoor Games



Swimming Pool



Children's Play Area



Library



Squash Court



Gymnasium



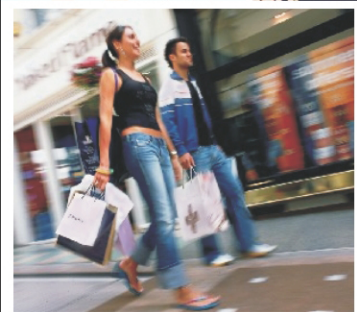
Jogging Track

## HIGHLIGHTS

- Developed by Experienced Builders
- Located in Heart of City
- Opposite Prestigious IDA Scheme 134
- Surrounded by Schools, Colleges & Bombay Hospital
- Peaceful & Secured Campus
- High Speed Elevators
- Well Designed Elevations
- Planned as per Vastu
- Housing Loan Tie- ups
- Sufficient Parking

## SPECIFICATIONS

- Best Construction Quality
- Earthquake Resistant Designs
- Vitrified Flooring
- Branded Bathroom Fittings
- Granite Slabs in Kitchen
- High Quality Concealed Plumbing
- Branded Electrical Fittings



# Typical Floor Plan



**BLOCK - A**



**BLOCK - B**



**BLOCK - C**



**BLOCK - D**



**BLOCK - E**

**BLOCK - A**  
(Type III)



**BLOCK - E**  
(Type I & II)



**BLOCK - B**  
(Type III)



**BLOCK - C**  
(Type IV & V)



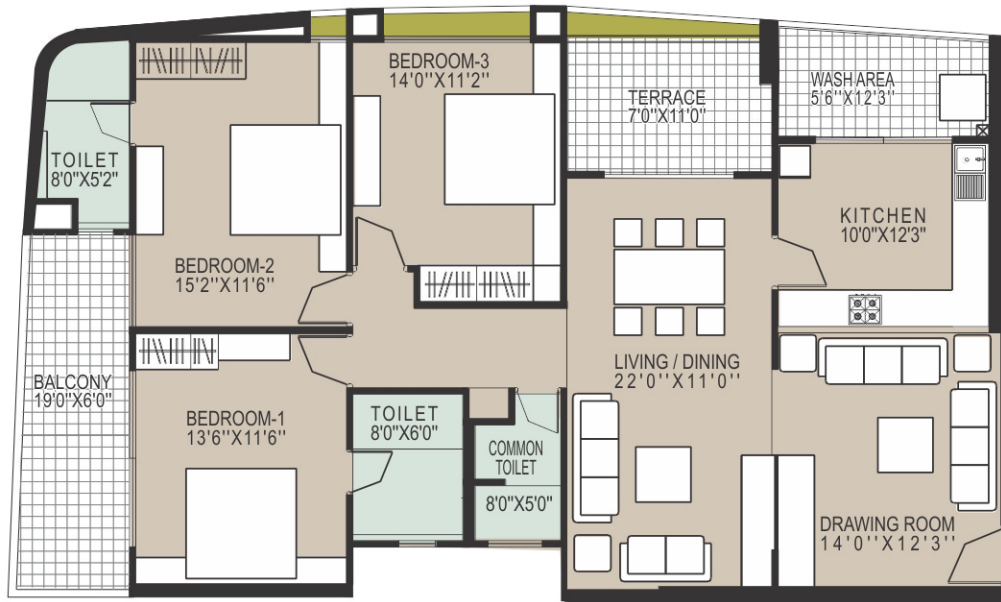
**BLOCK - D**  
(Type I & II)

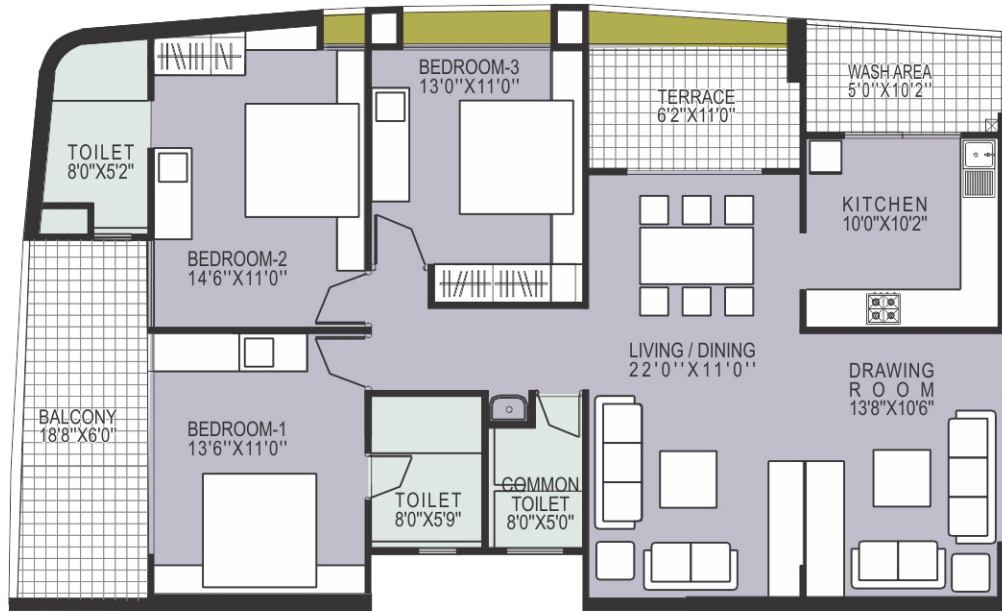




**4 BHK**  
S/B AREA  
2585 sq.ft.



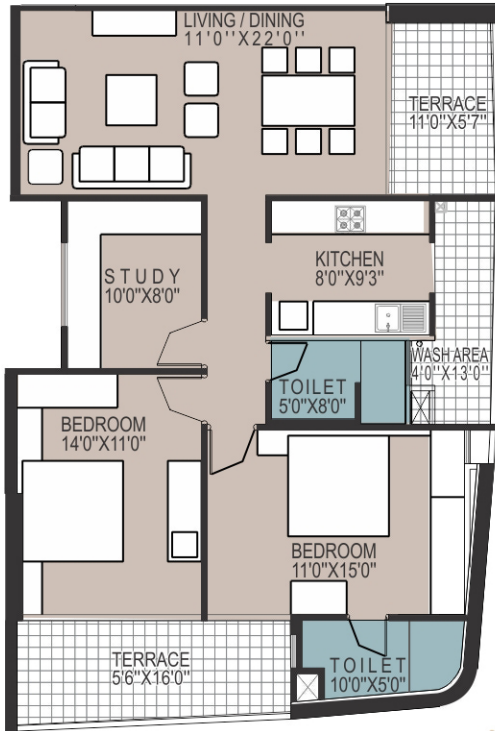




**3 BHK**  
S/B AREA  
1980 sq.ft.

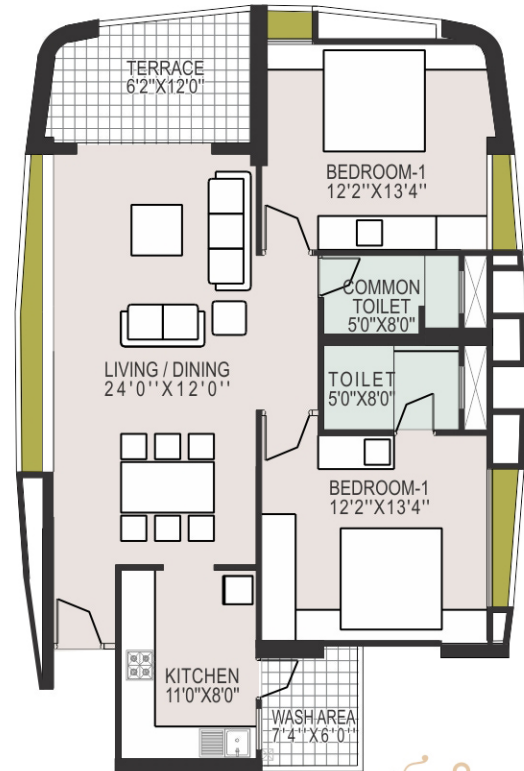


**TYPE IV**



**2½ BHK**  
S/B AREA  
1550 sq.ft.

**TYPE V**



**2 BHK**  
S/B AREA  
1370 sq.ft.

# Location Plan



## BUILDERS :



Committed to Growth

### BCM GROUP

#### Shanti Realty (P) Ltd.

UG-21, BCM HEIGHTS, Near Bombay Hospital, Indore

Tel : 0731-2579782-84, 4266157, 4266158

e-mail : info@bcmgroup.in

website : www.bcmgroup.in

## SITE :



### BCM PARADISE

Between Bombay Hospital &  
Advanced Academy

Opp. Scheme 134, Nipania, Indore (M.P.)

Tel : 0731-3223434, 3223535

Mobile : 98271-35359 / 98271-45459

## ARCHITECTS :



### RKGA Consultants Pvt. Ltd.

ARCHITECTURAL & ENGINEERING CONSULTANTS

Tel : 0731-4005490, 4203668, 4005762

email : indore@rkgaltd.com

• It is for private circulation only and is not a legal document. • All rights are reserved with the Promoters / Builders / Architects to make any changes in the size / plans / amenities / facilities / specification etc.  
• The discretion of further addition of floors or changes remain with the Promoters / Builders. • Photographs shown are suggestive and not actual.

**Necessary approvals / permissions obtained** • Diversion order No. 16 / A-2 / 2006-07 dt. 02.12.06 & 219 / A-2 / 07.08 dt. 27.03.08. • High rise committee letter No. 4398 / एसडी / एसडी / 08 / Indore dt. 19.08.08  
• TNCP Memo No. 5139 / चक्राणि / 08 / एल बाय / 181 / 08 dt. 04.10.08 • Development Permission No. 50 / 2008 dt. 05.11.08. • Building permission from Gram Panchayat No. 70 / 4 / पि / 2008 dt. 11.11.08