



duplex villas - near financial district, gachibowli

OVER VIEW

BricMor is a real estate developer with a futuristic perception conceiving one more luxurious gated villa project "**Lorena**".

Living in Lorena is like celebrating life to the best amidst nature's bounty.

In the beautiful locales of Velimela, this gated community with plot size **220 sq. yards** and built up area **2100 sft** is the destination for those who want to experience the heights of ecstasy while enjoying the blend of nature, space & leisure in an awe-inspiring architectural masterpiece.

east facing



ELEVATION





west facing

ELEVATION





3 BHK
East Facing - Ground Floor Plan



east facing



3 BHK
West Facing - Ground Floor Plan



west facing



3 BHK
East Facing - First Floor Plan



FLOOR PLAN



3 BHK
West Facing - First Floor Plan



FLOOR PLAN



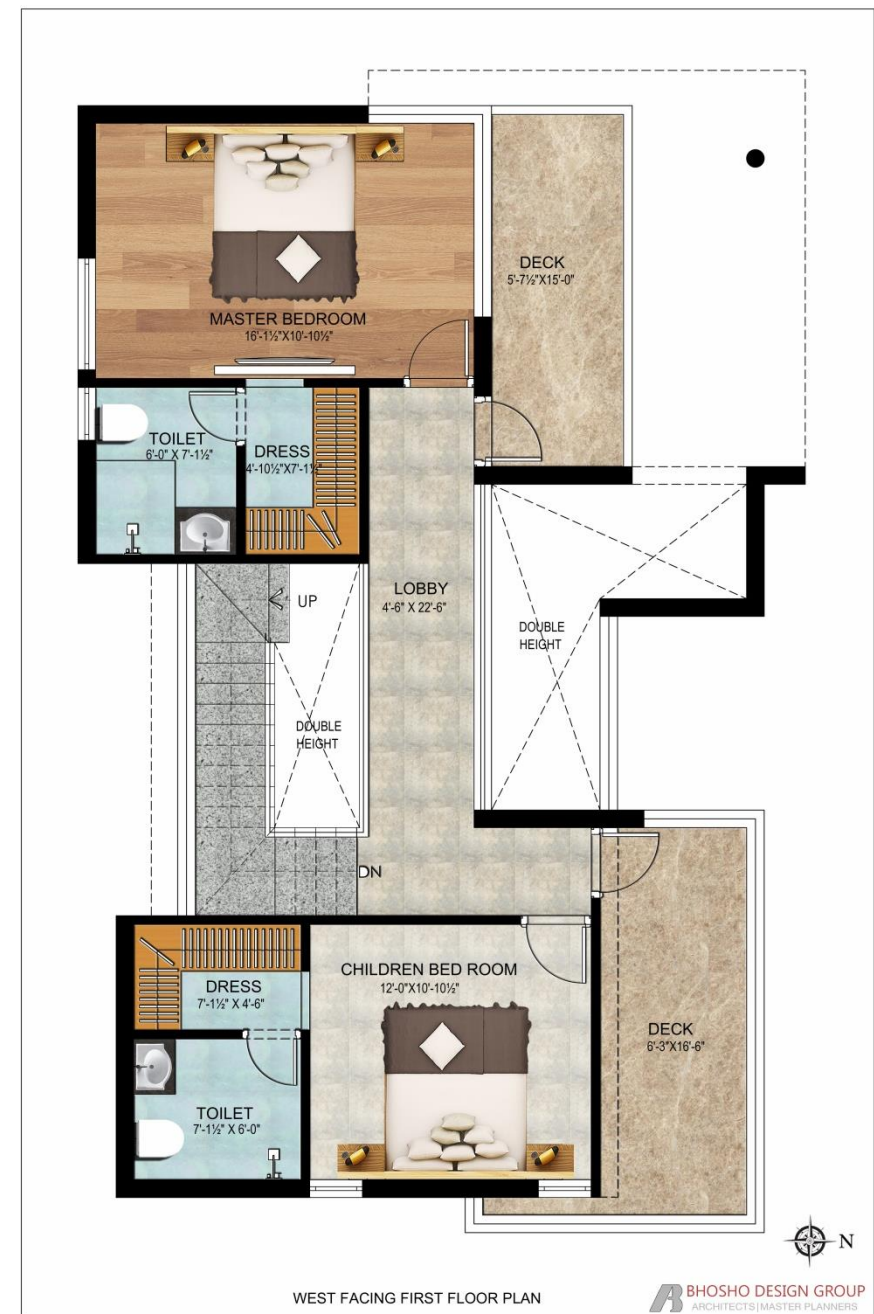
east facing: **GROUND FLOOR**



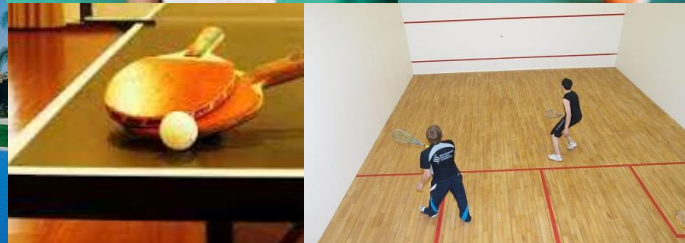
east facing: **FIRST FLOOR**



west facing: **GROUND FLOOR**



west facing: **FIRST FLOOR**



CLUB HOUSE

- Swimming Pool
- A/C Gymnasium
- Yoga/Meditation Hall
- Spa/Sauna Facility
- Integrated Library & Study Lounge
- Multipurpose Party Hall
- Snooker / Pool Table
- Table Tennis Room
- Games (Caroms, Chess, Card)
- Office Work Space & Wi-Fi Enabled

CLUB HOUSE

OUT DOOR

- Shuttle Court | Basketball Court
- Lawn Tennis Court | Children's Play area
- Amphitheatre | Ample parking for Visitors



LOCATIONAL ADVANTAGES

Just to mention a few salient points about our project location:

Travelling Time: From Wipro (12 mins); Mindspace (18 mins); Cyber Towers (21 mins); Shamshabad Airport (30 min).

Connectivity: Well connected by 100 ft, 150 ft roads and 500 ft ORR.

Commuting: It is a great experience driving on wide and smooth roads that can accommodate a large number of vehicles.

Schools & Colleges: Four international schools are in Kollur, Velimela & Tellapur - Samashti International School, Birla Open Minds, The Gaudium School coming in 27 acres and Sancta Maria International School. Also we have Narayana IIT Foundation Palace near to our project. Also there are colleges like CBIT, MGIT, ICFAI Business School, and many more.

ORR: The connect is just 1.6 kms away from our project to ORR Exit-2 (Kollur Exit).

Railway Station: Edula Nagulapally station is just 0.8 kms away. MMTS phase-2 has been extended upto this station across 80 acres and this station has been declared to be one of the most hustling points like Secunderabad.

Hospital: Continental Hospital - a 750 bed super specialty hospital is just 10 minutes away at Financial District, Gachibowli.

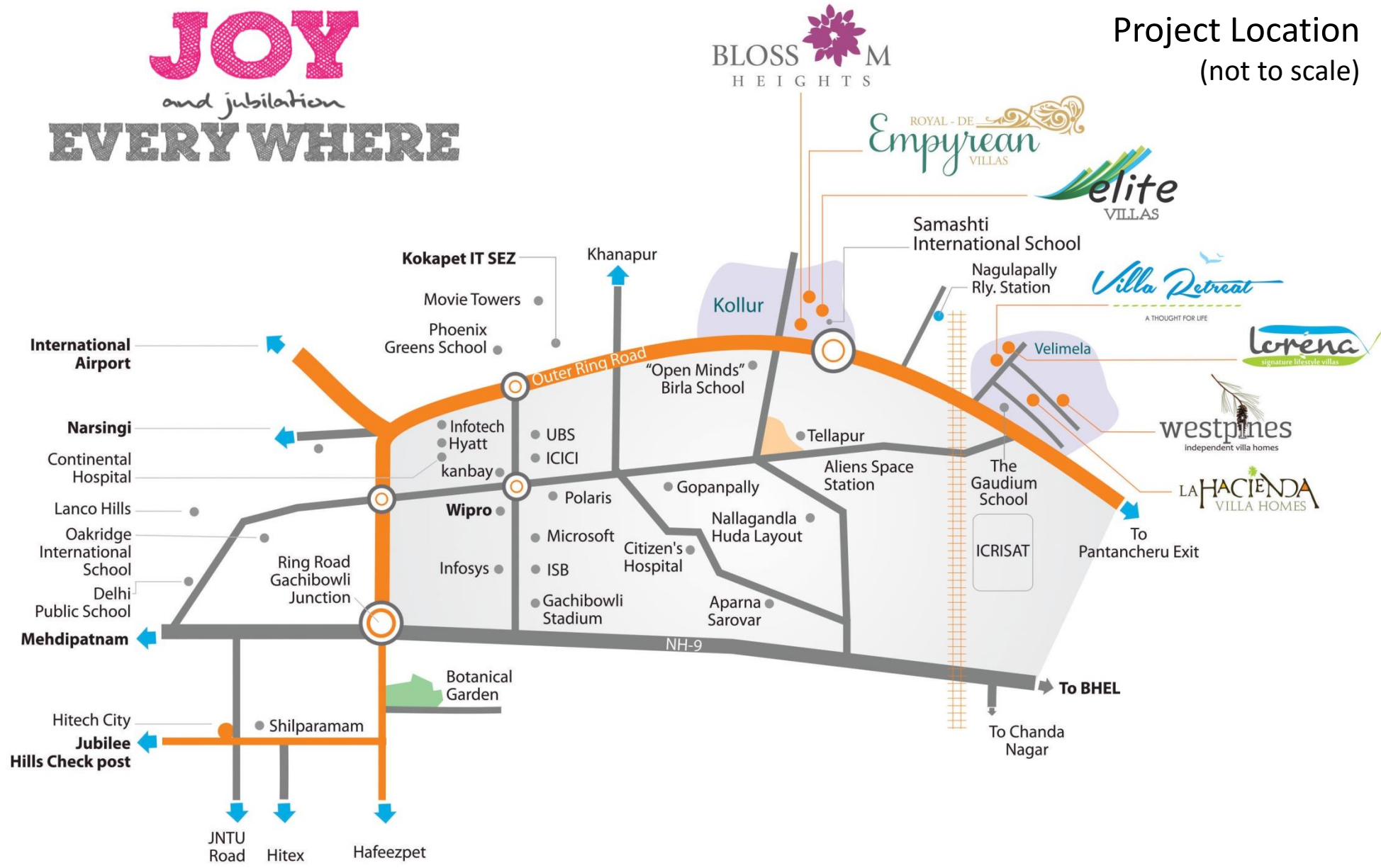
Banks: SBI has its bank along with an ATM facility at Kollur.

Shops: There are a number of small shops just a few metres away.

Kokapet IT SEZ: Lot of companies are gearing up to set up their facility in Kokapet SEZ.

JOY
and jubilation
EVERYWHERE

Project Location
(not to scale)



LOCATION MAP

contact

+91 - 7799 7933 12 - 13

website

www.bricmor.com

Note: This PDF is only a conceptual presentation of the project and not a legal offering. The promoters reserve the right to alter and make changes in elevation, specifications and plans as deemed fit.



CONTACT

BricMor Infra Projects Pvt Ltd

4th Floor, Plot 13, Jayaberi Pine Valley,
Beside Cyberabad Commissionerate office,
Gachibowli, Hyderabad - 500 032.

www.bricmor.com

sales@bricmor.com

Call : +91 7799793311 - 19