



ATZ PROPERTIES

ATZ PROPERTIES

Welcomes You

About ATZ Properties

ATZ properties are a leading Property Developers based in Bangalore and having its branches in **Pune** and **Mumbai**, the team consists a group of professional Engineers and Management graduates, with rich experience in the real estate business.

Bangalore being a hub of real estate activity of the country, with the presence of large pool of techies, the company is focusing and are dedicated to developing and constructing the finest homes, offices, retail and hospitality space in all the locations of its presence in India, with breathtaking views of the gardens, environments and top class facilities on par with global standards.

Objectives of ATZ Properties

- Encouraging substantial sales in the year.
- Net Profit/Sales in Positive.
- Develop Hi-Tech, lavish, most modern for high net worth for individuals and corporate.
- Develop large township for low and midrange buyers.

Objectives of ATZ Properties

- To be National player in Development of Residential, Commercial and Tech Parks.
- A Customer centric company to achieve perfection in its business plans to deliver 100% to its valued customers.

ATZ Areva



ATZ Areva



ATZ Areva



About ATZ Areva

- ATZ Areva is a plethora of luxury residential apartment project located in Marathahalli in Panathur Road.
- Which is affordable and low maintenance charge.
- The structure is what you ever imagined your home to be – calm, comfortable and most of all affordable.
- A well lavishly designed project from top architect of Bengaluru.

About ATZ Areva

- Being eco friendly this location also has the benefits of lake view from every corner of the structure with the best amenities.
- Project is sure to be an excellent choice for you and your family for the present and future.
- VASTU compliance a great location we found for your comfort.

Master Plan & Floor Plan

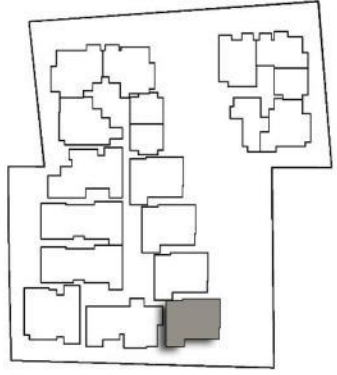
Site plan



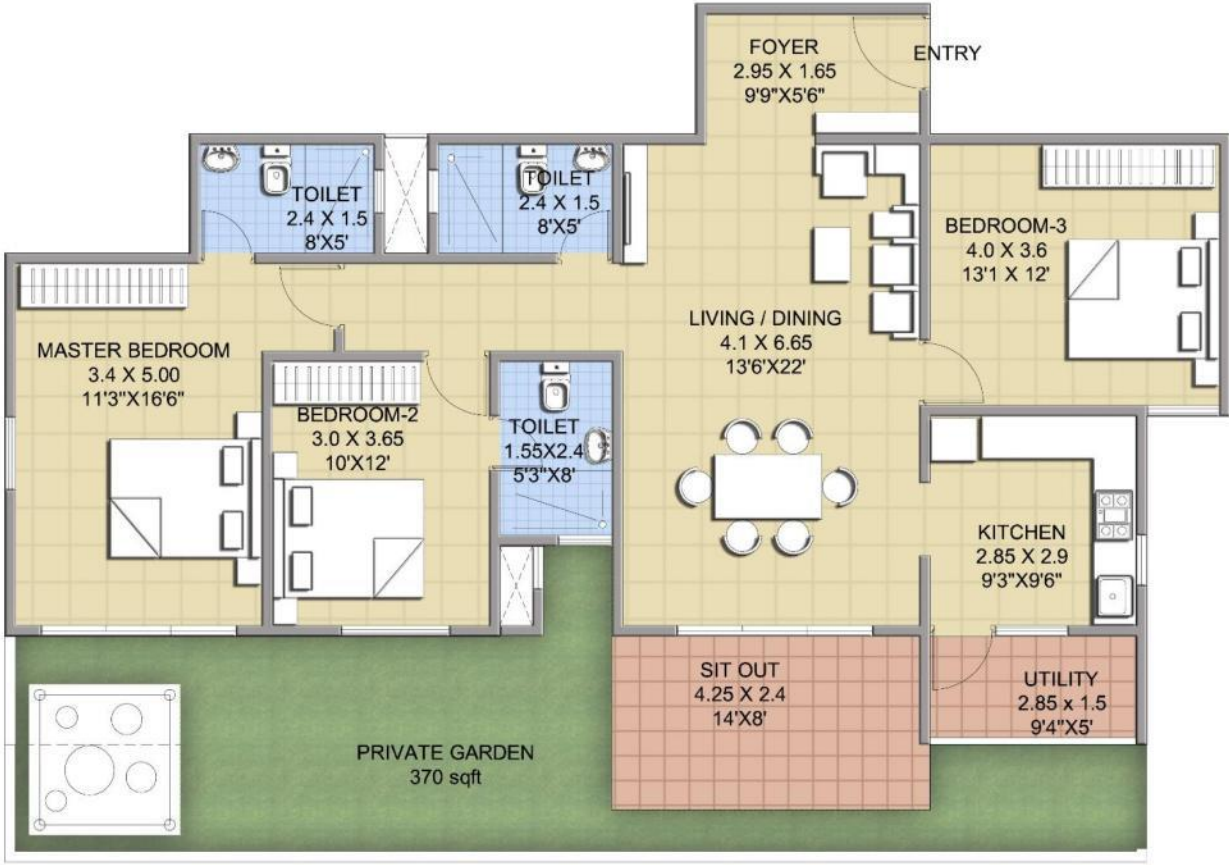
Unit plan – 2 BHK



UNIT - 001
AREA - 1330 SQFT



Unit plan – 3 BHK



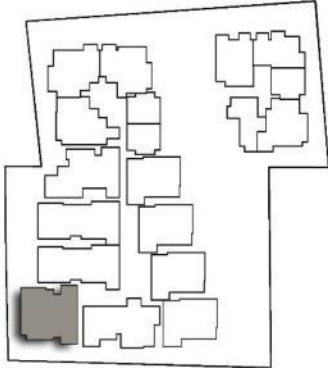
UNIT - 002
AREA - 1805 SQFT



Unit plan – 3 BHK



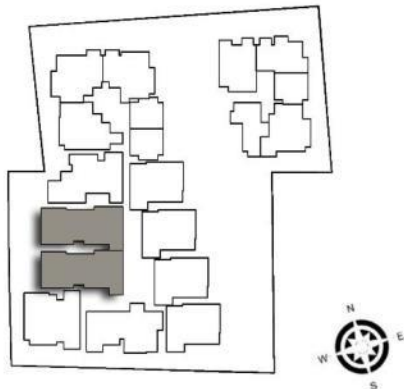
UNIT - 003
AREA - 1770 SQFT



Unit plan – 3 BHK



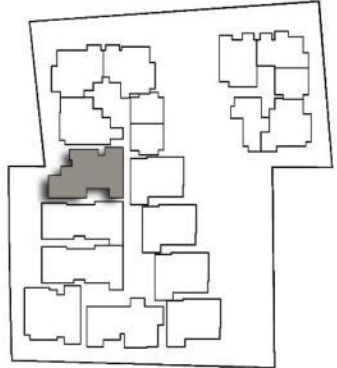
UNIT - 004 & 005
AREA - 2110 SQFT



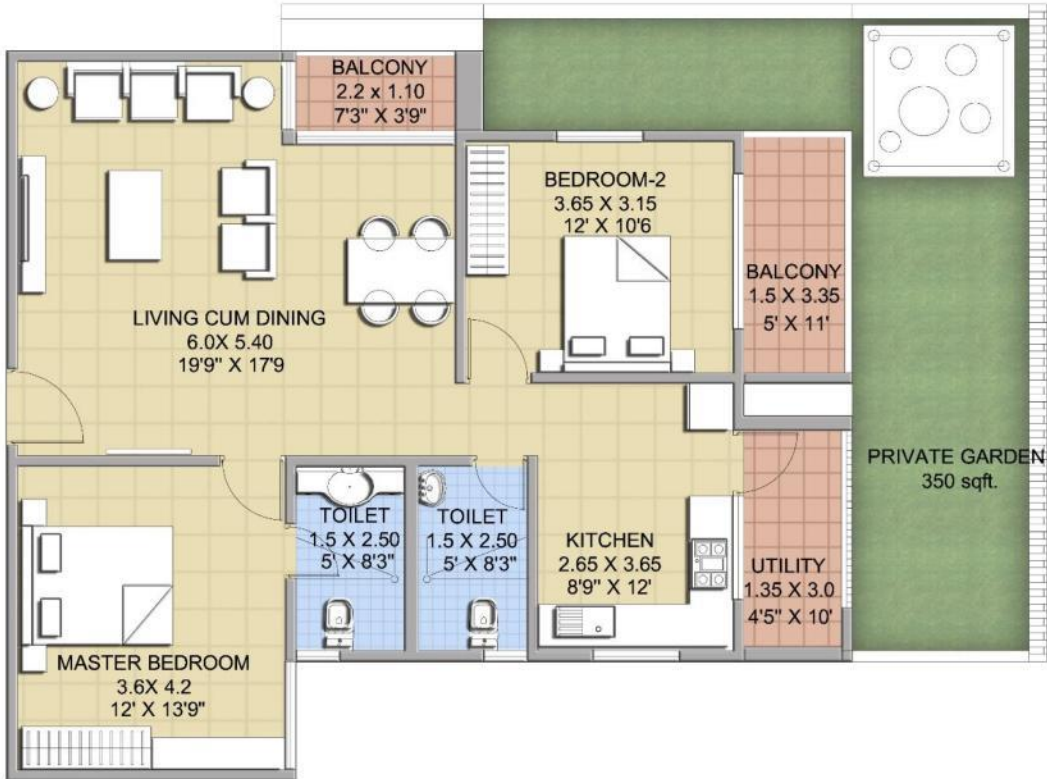
Unit plan – 3 BHK



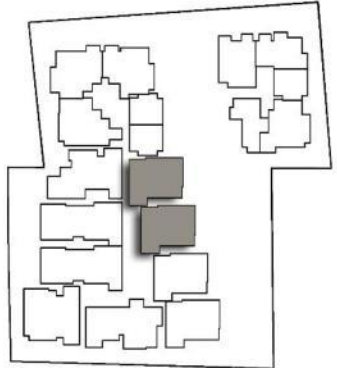
UNIT - 006
AREA - 1890 SQFT



Unit plan – 2 BHK



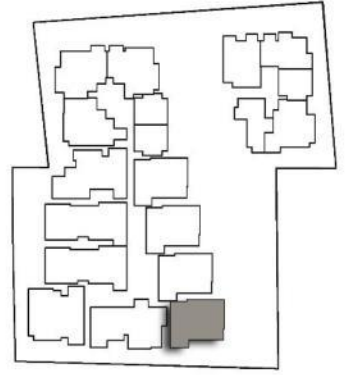
UNIT - 011 & 012
AREA - 1395 SQFT



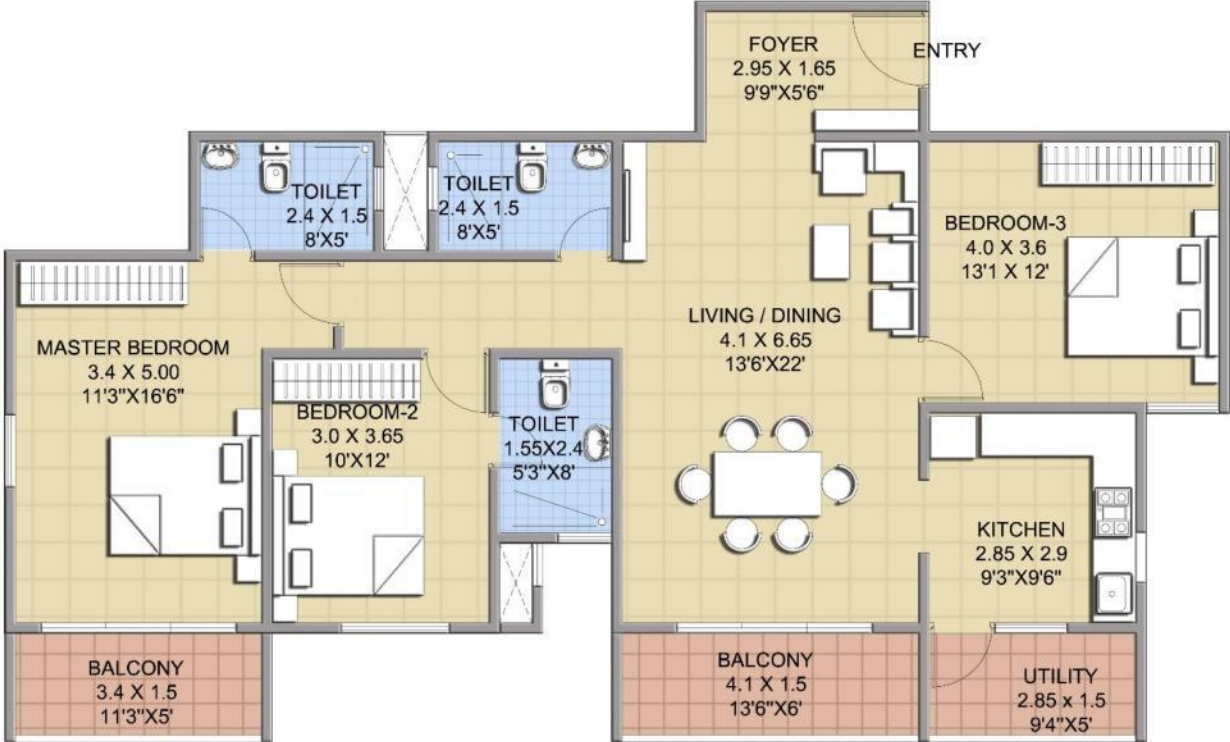
Unit plan – 2 BHK



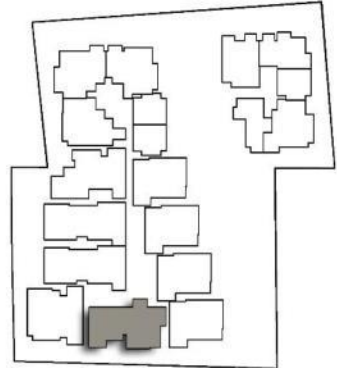
UNIT - 101 & 201
AREA - 1340 SQFT



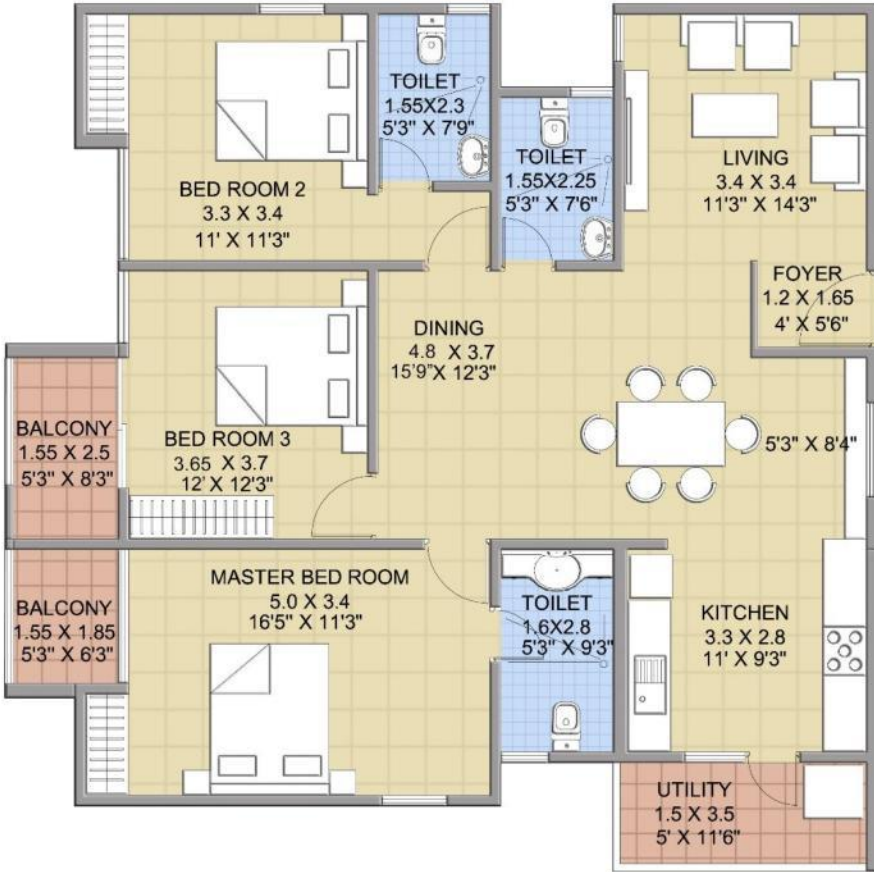
Unit plan – 3 BHK



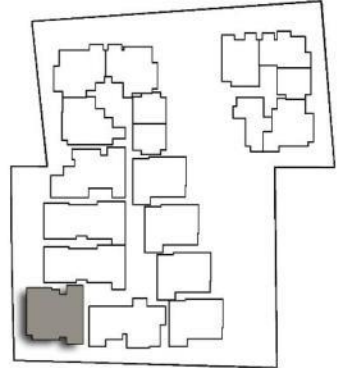
UNIT - 102 & 202
AREA - 1745 SQFT



Unit plan – 3 BHK



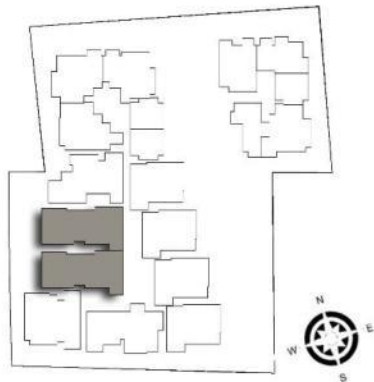
UNIT - 103 & 203
AREA - 1775 SQFT



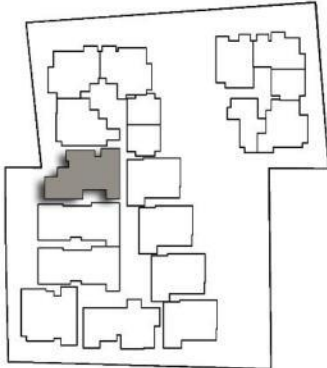
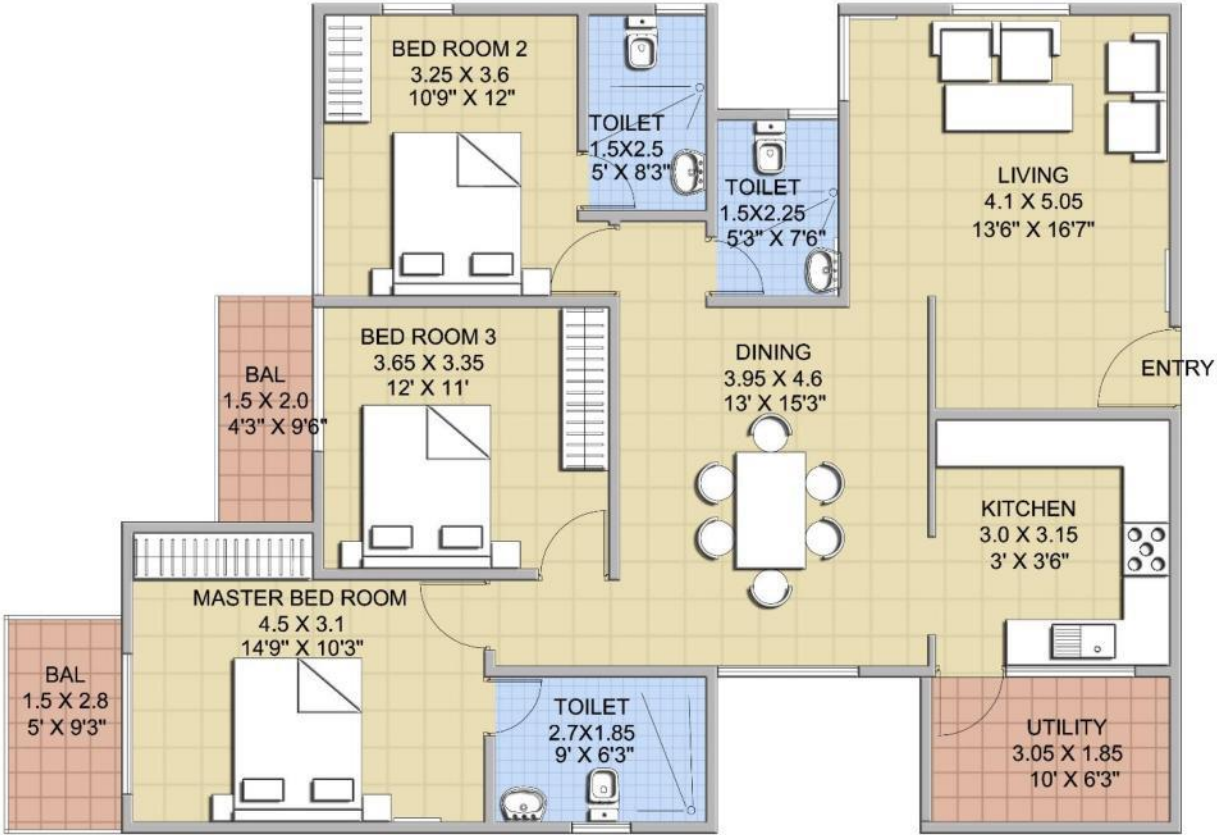
Unit plan – 3 BHK



UNIT - 104,105, 204 & 205
AREA - 2120 SQFT



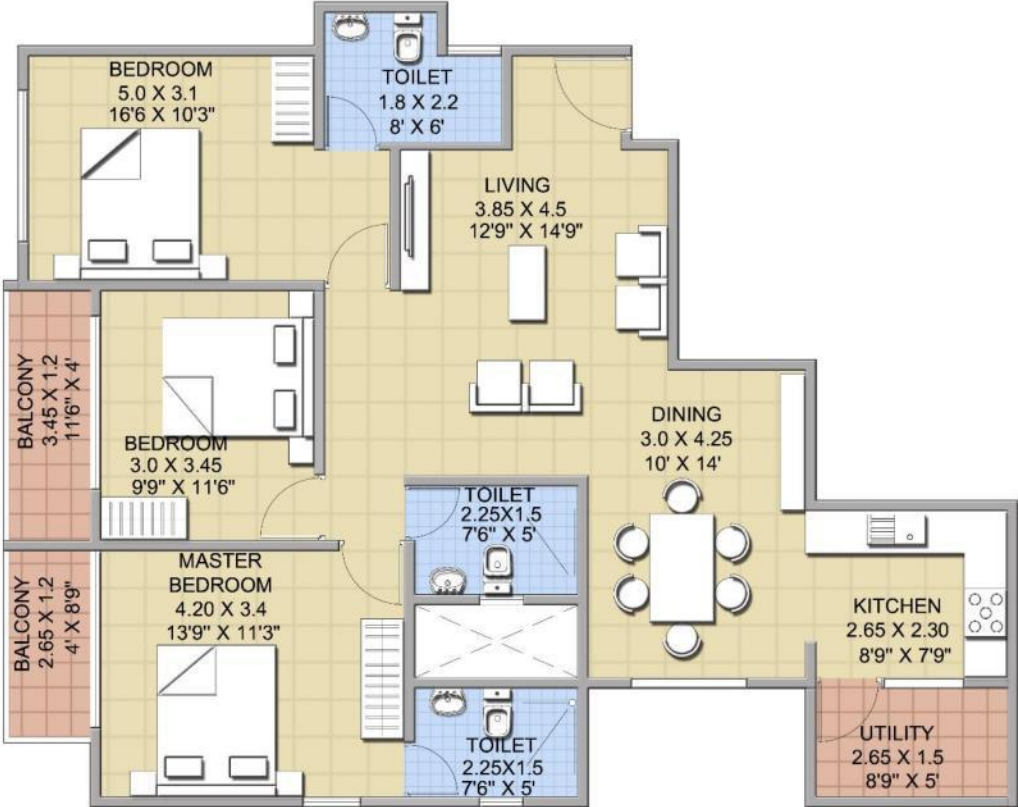
Unit plan – 3 BHK



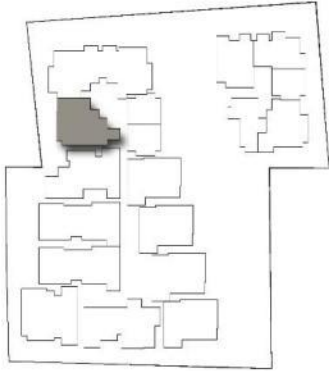
UNIT - 106, 206, 306 & 406
AREA - 1805 SQFT



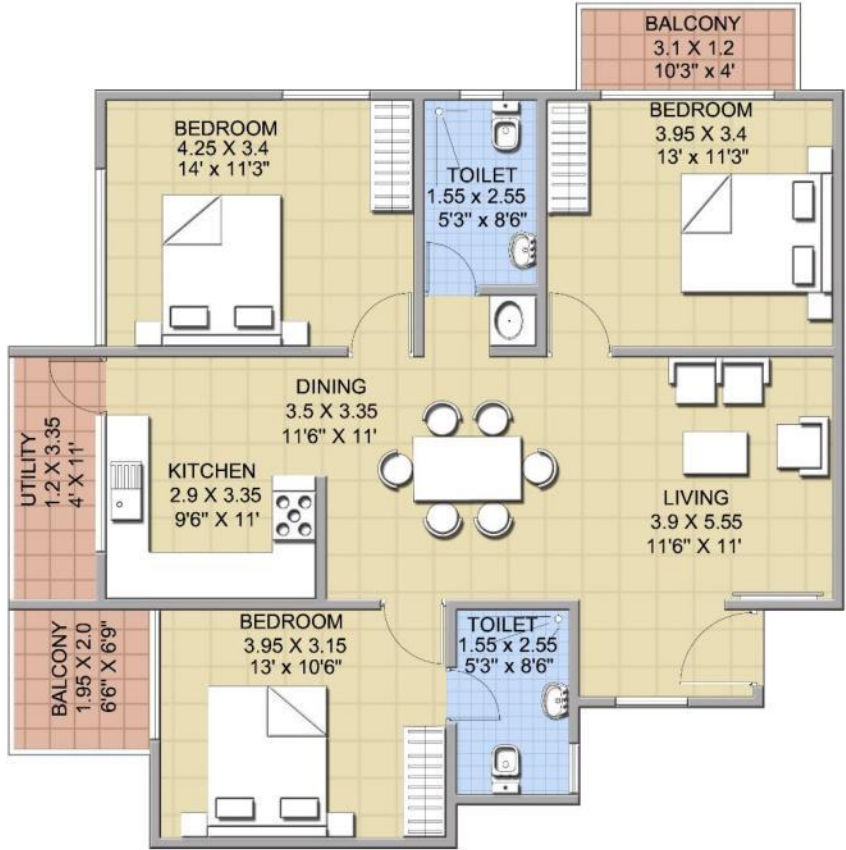
Unit plan – 3 BHK



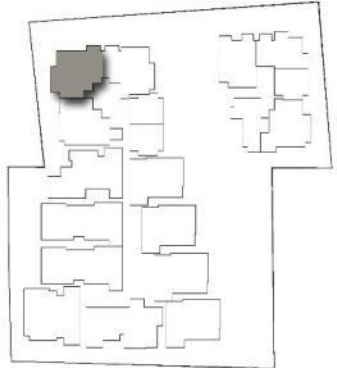
UNIT - 107, 207, 307, & 407
AREA - 1615 SQFT



Unit plan – 3 BHK



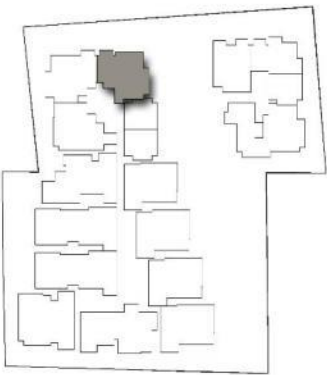
UNIT - 108, 208, 308 & 408
AREA - 1525 SQFT



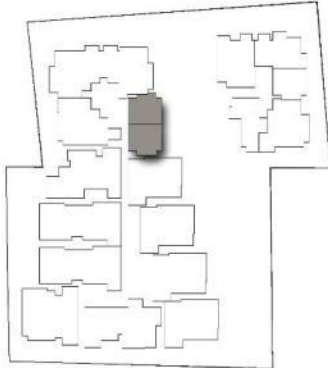
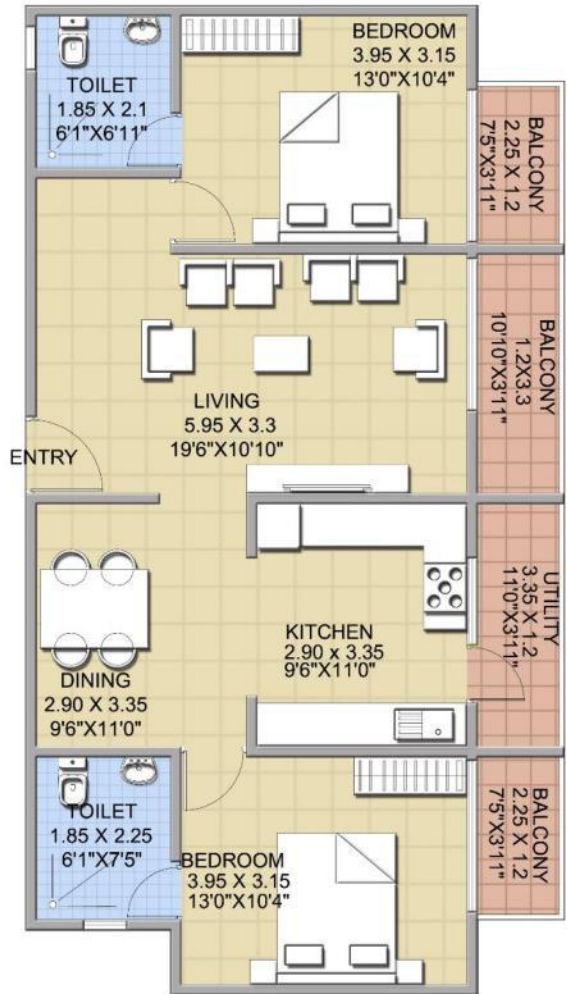
Unit plan – 3 BHK



UNIT - 109,209, 309 & 409
AREA - 1505 SQFT



Unit plan – 2 BHK

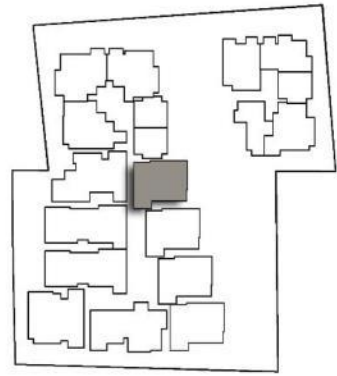


UNIT - 110, 210, 310 & 410
AREA - 1370 SQFT

Unit plan – 2 BHK



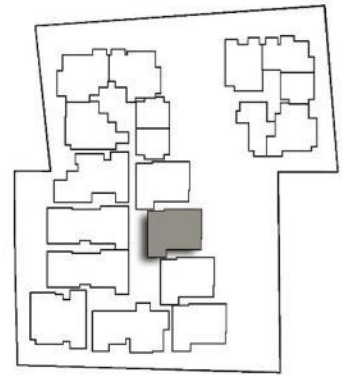
UNIT - 111 & 211
AREA - 1395 SQFT



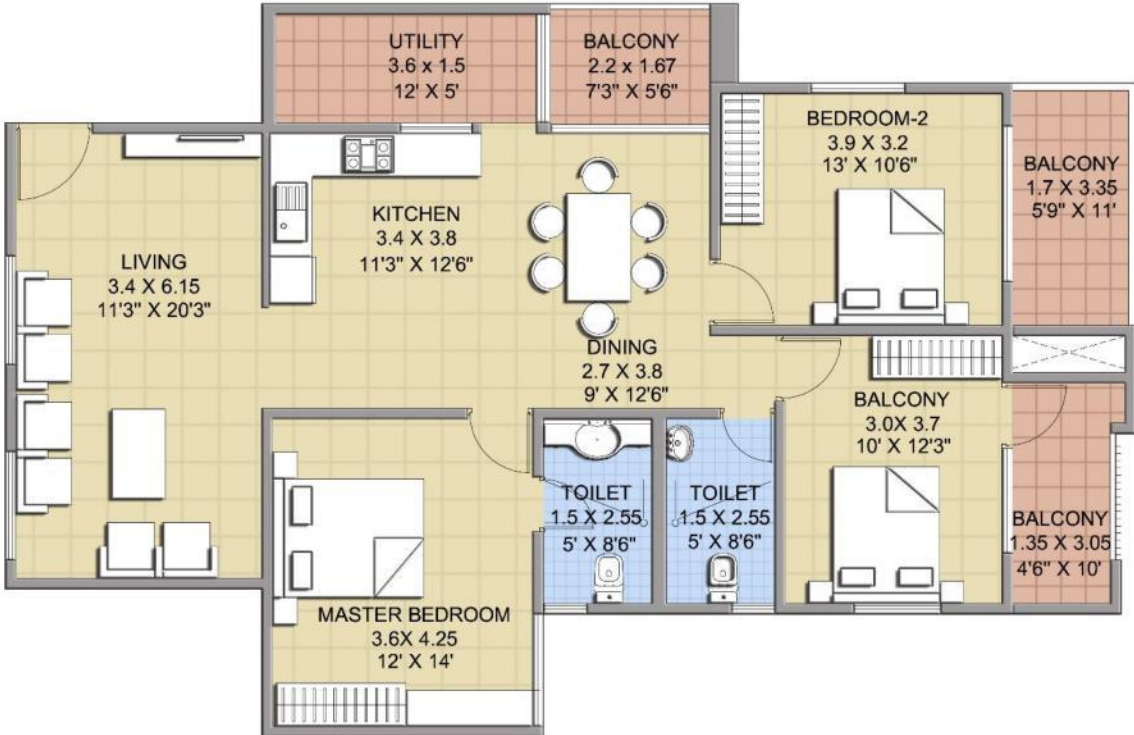
Unit plan – 2 BHK



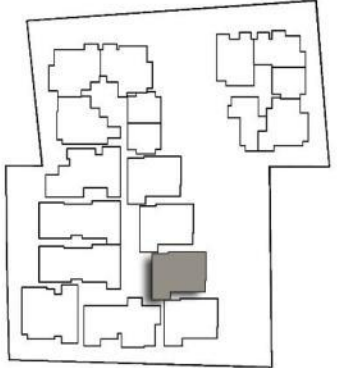
UNIT - 112 & 212
AREA - 1505 SQFT



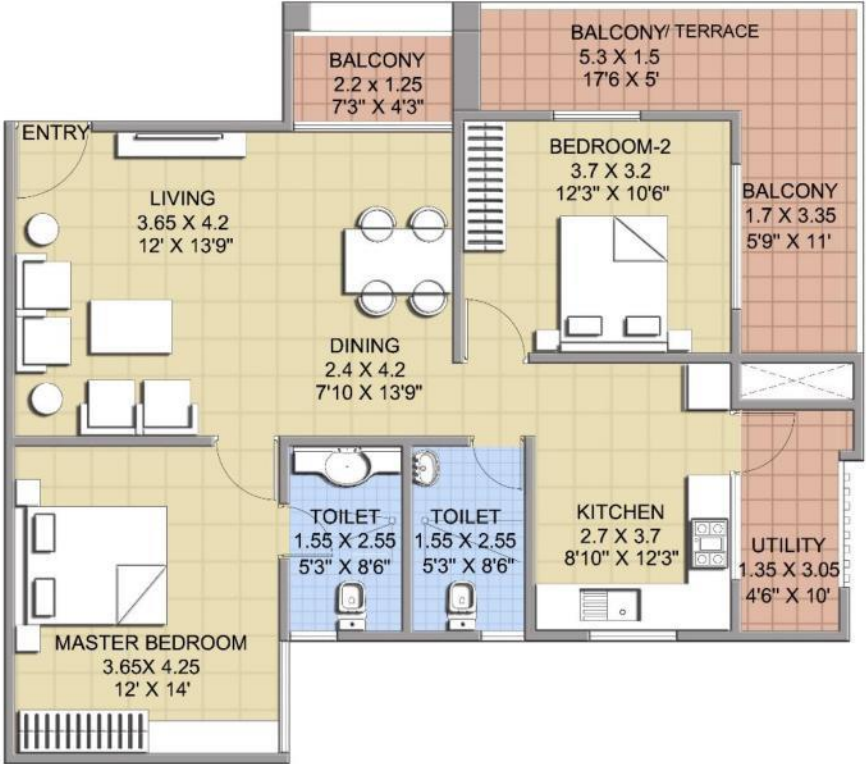
Unit plan – 3 BHK



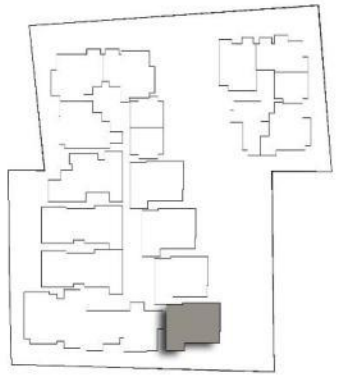
UNIT - 113 & 213
AREA - 1825 SQFT



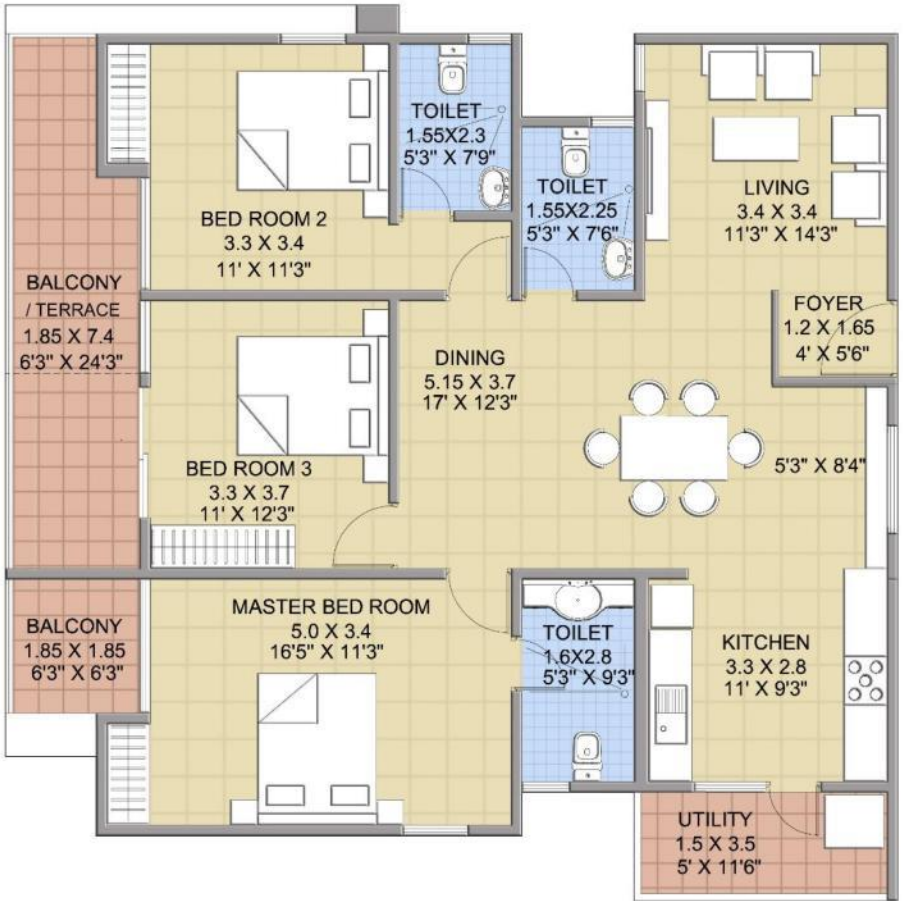
Unit plan – 2 BHK



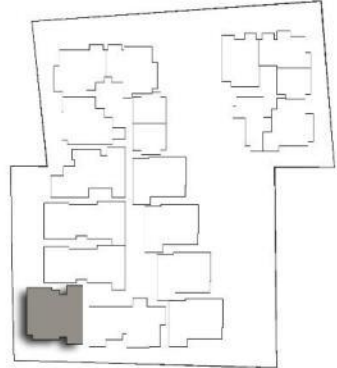
UNIT - 301 & 401
AREA - 1450 SQFT



Unit plan – 3 BHK



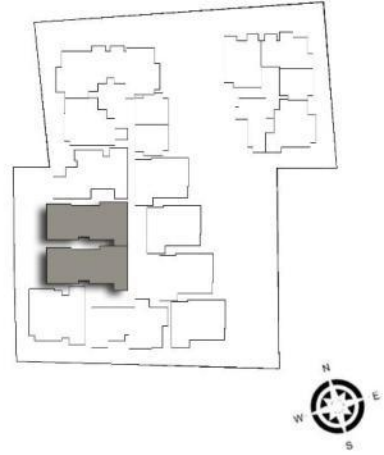
UNIT - 303 & 403
AREA - 1895 SQFT



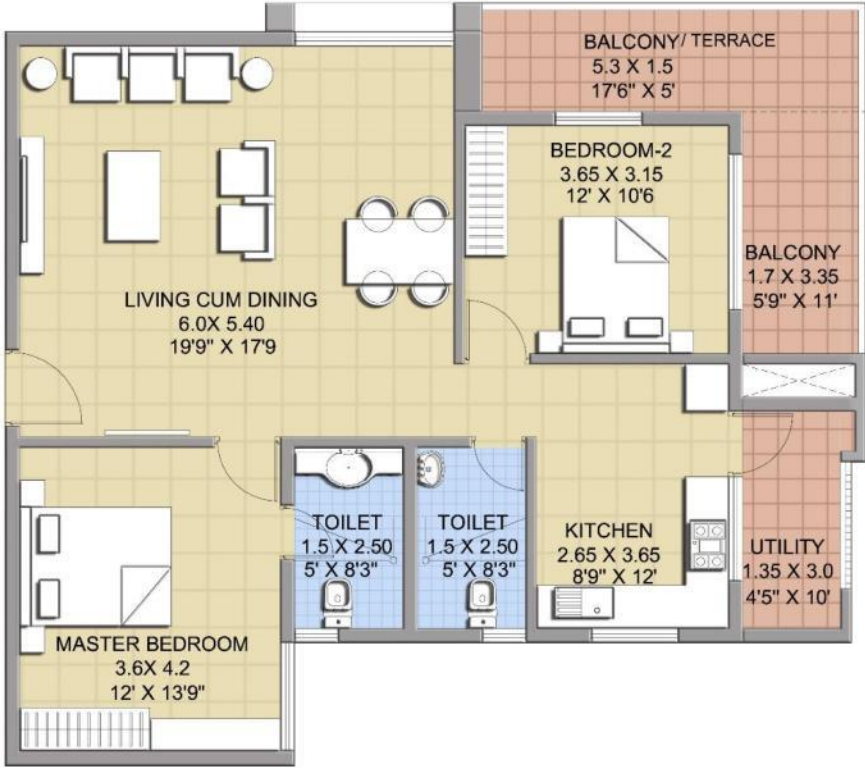
Unit plan – 3 BHK



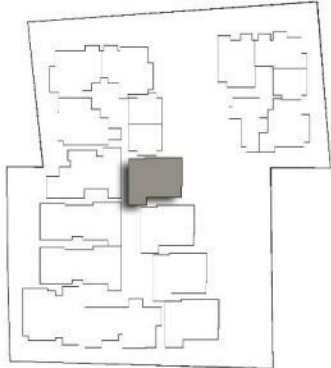
UNIT - 304, 305, 404 & 405
AREA - 2150 SQFT



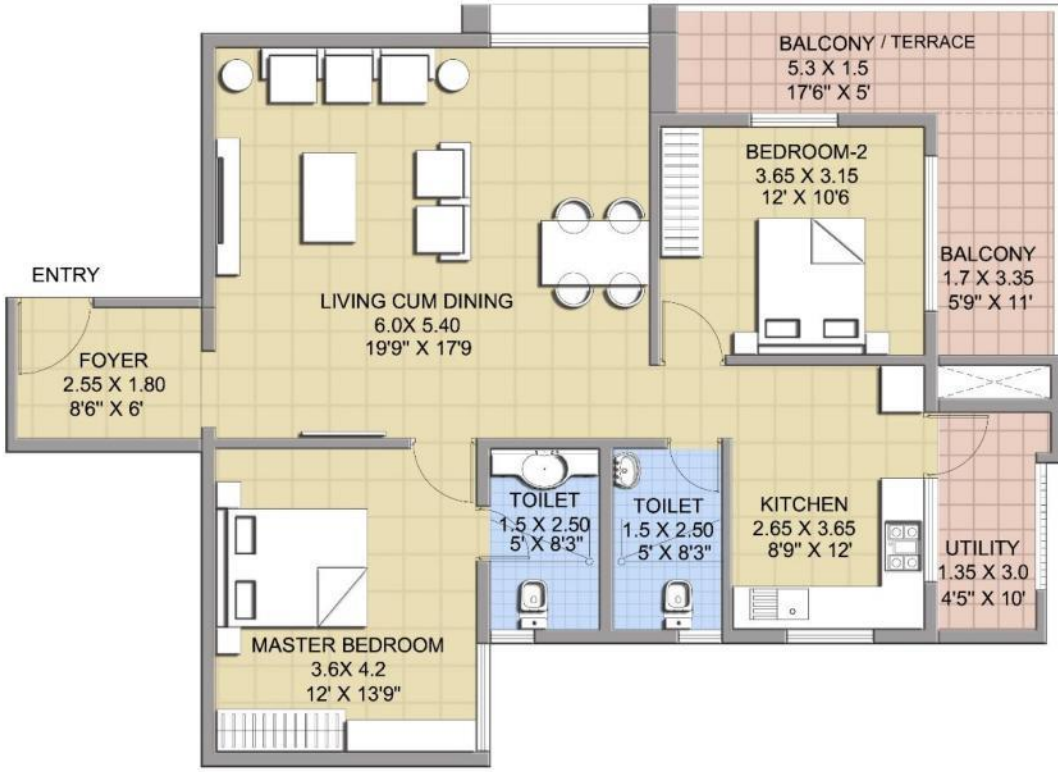
Unit plan – 2 BHK



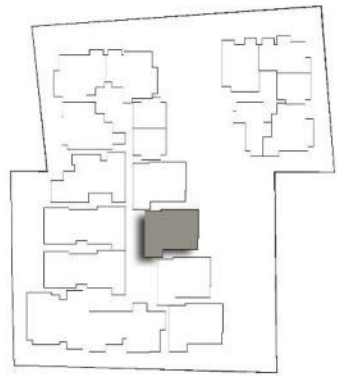
UNIT - 311 & 411
AREA - 1480 SQFT



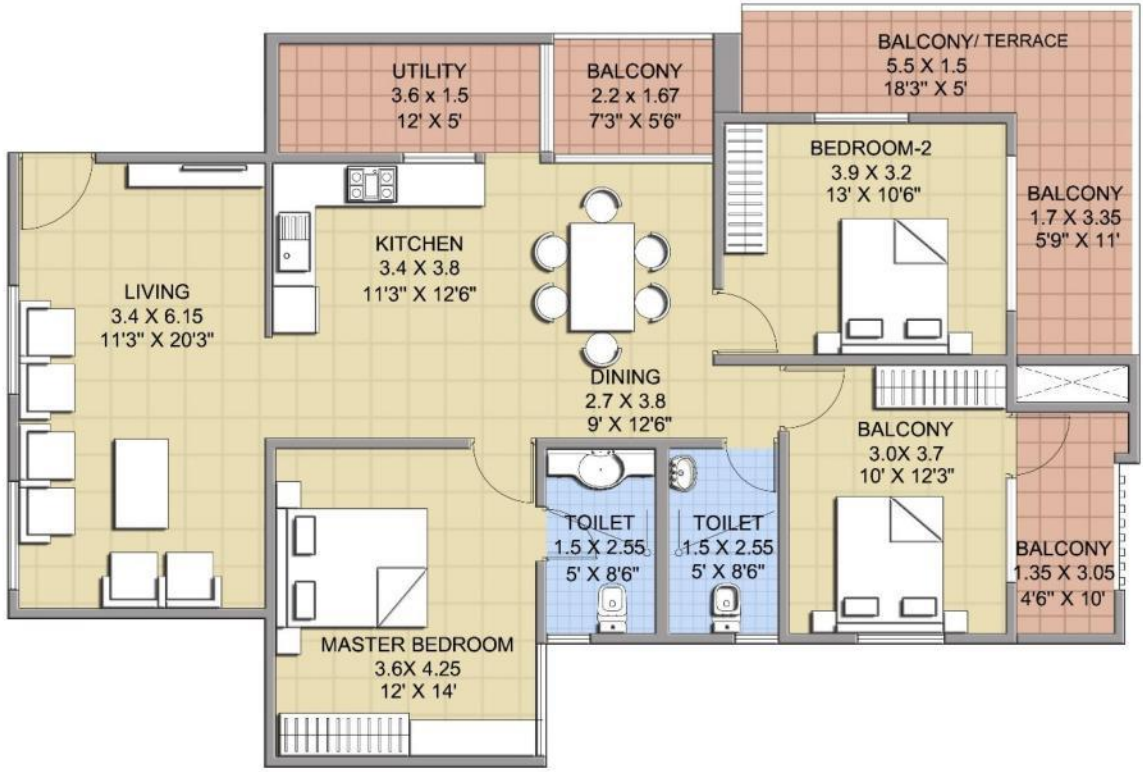
Unit plan – 2 BHK



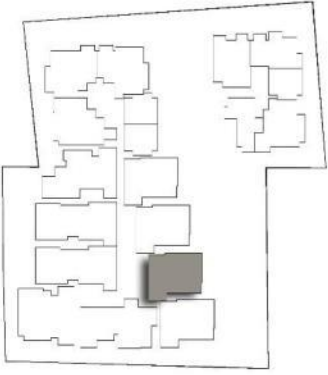
UNIT - 312 & 412
AREA - 1605 SQFT



Unit plan – 3 BHK



UNIT - 313 & 413
AREA - 1805 SQFT





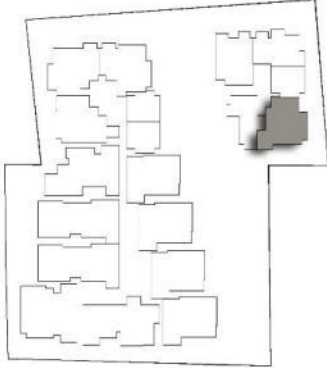
ATZ PROPERTIES

EAST BLOCK

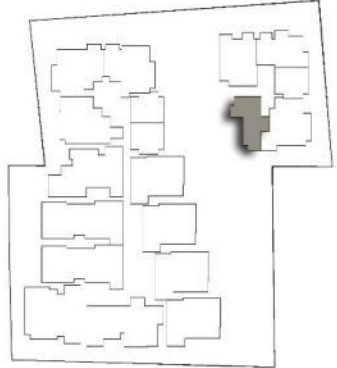
Unit plan – 2 BHK



UNIT - 214, 314 & 414
AREA - 1245 SQFT



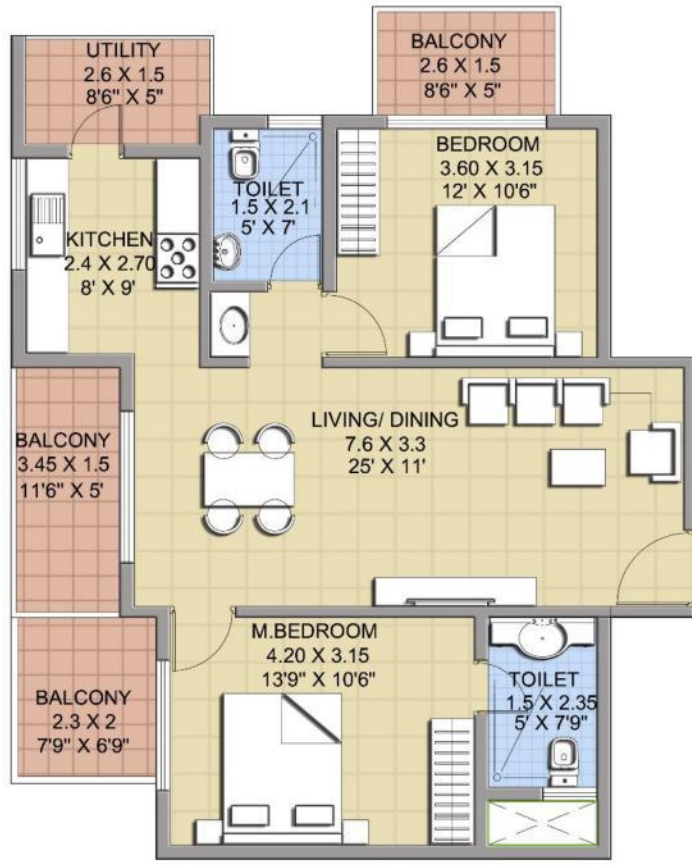
Unit plan – 2 BHK



UNIT - 215,315 & 415
AREA - 1080 SQFT



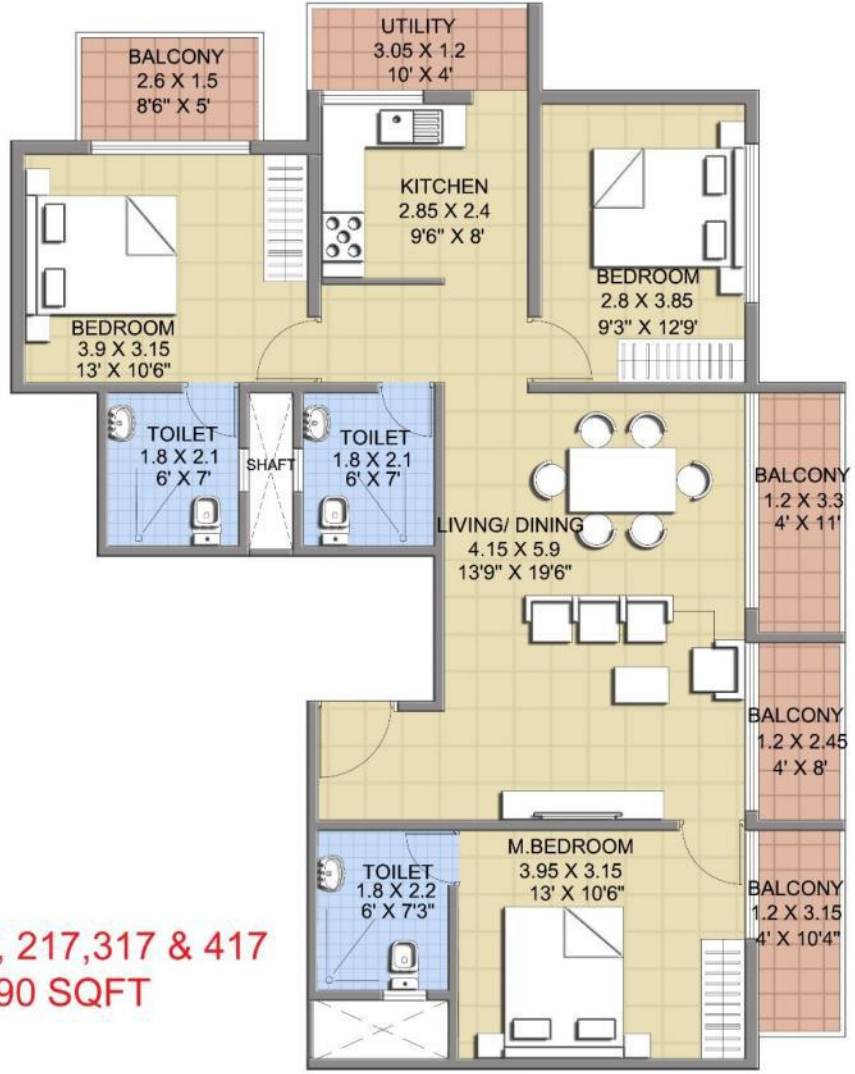
Unit plan – 2 BHK



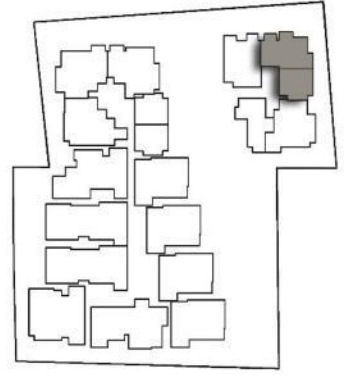
UNIT - 116, 216,316 & 416
AREA - 1325 SQFT



Unit plan – 3 BHK



UNIT - 117, 217,317 & 417
AREA - 1690 SQFT



Specifications

- **Structure:** RCC frame earth quake resistance structure.
- **Walls:** 6" cement solid blocks for exterior wall and 4" solid block for internal walls.
- **Doors:** Main door with seasonable teak wood frame with teak wood shutters and internal door *sal / mathi* frame flush shutters.

Specifications

- **Electrical work:** Copper wiring with anchor/Havel's cables with Anchor rider switches, TV & telephone points in the living room and master bedroom.
- **Toilets:** Anti skid ceramic tile flooring and glazed tile dado up to door height with reputed sanitary ware and CP fittings, with provision for geyser.
- **Finishing:** Emulsion paint for walls and enamel paint for wood and steel grills, exterior with Apex paint.

Specifications

- **Kitchen:** Black granite kitchen platform with stainless steel sink, 2 feet height dadoing in ceramic tiles.
- **Lift:** Three automatic lift Johnson make suitable capacity elevators.
- **Generators:** Stand by generators for lift, motor and common area lighting.
- **Parking:** Adequate basement car parking facility.

Amenities

- Swimming Pool



- Solar Energy



Amenities

- Children's Play Area

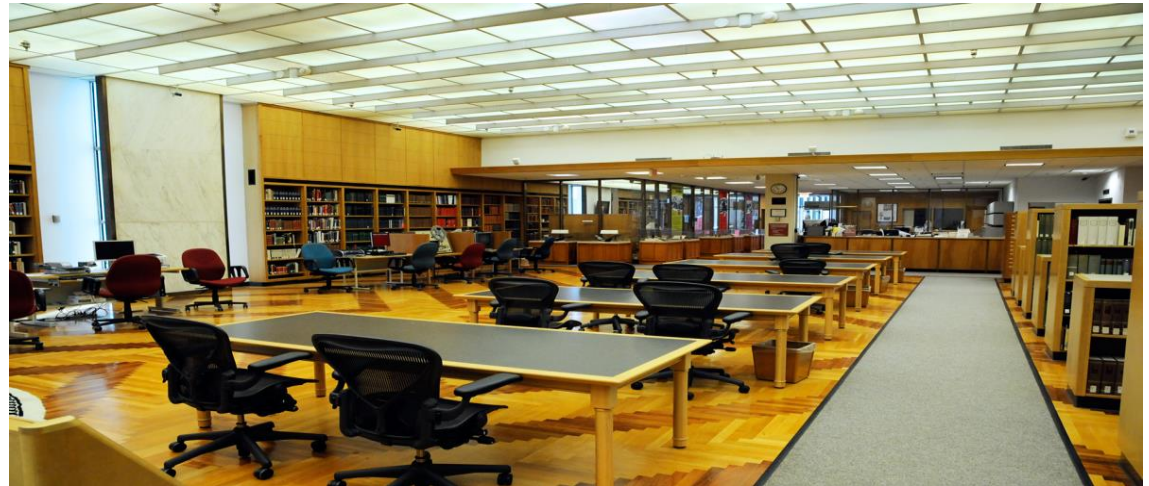


- Multi Gym & Health Spa



Amenities

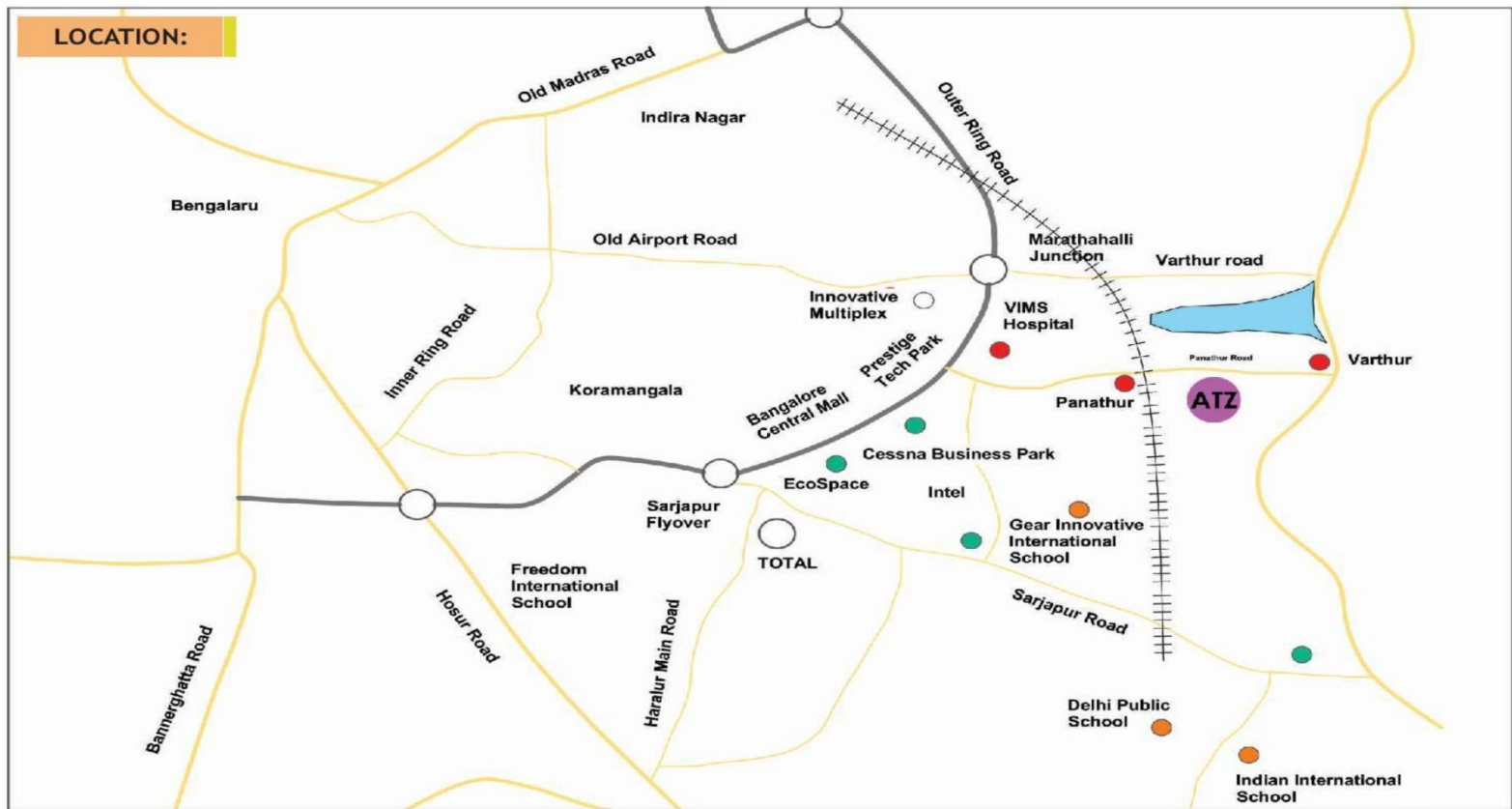
□ Reading Room



□ Party Hall



Location Map



*Not to scale.



ATZ PROPERTIES

For More Information Visit:

www.atzproperties.in/atz-areva.html

Watch ATZ Areva Walkthrough

<https://www.youtube.com/watch?v=yP6g0c3wXJg>