

ATZ
ROCKVIEW

PHASE - 1 & 2



Adithya Palatial, A JD Project by ATZ Properties an architect designed truly modern residential complex, housing 44 Luxury flats, conceived and constructed with your convenience in mind, close to Hebbal ring road, abutting Manyata Embassy Tech Park, overlooking IBM, NOKIA, ALCATEL etc and upcoming LT Karle Property housing Star hotel, Malls, and Lumbini park. Part of this property belongs to Embassy constructions. Its just minutes away from your work place.



ATZ Properties introduces **Gladiola Gardenia**, a ground plus 4 floors apartment with stilt floor parking. 83 beautifully sketched homes adding more luxury to your life.

Grandeur, A JD project by ATZ Properties an Architect designed truly modern residential complex, housing 60 flats, conceived and constructed with your convenience in mind, close to Hebbal ring road. Lumbini garden, abutting Manyata Embassy tech park facing IBM, NOKIA SIEMENS NETWORK, ALCATEL LUCENT, PHILIPS, other software companies, beautiful manyata villas, Rachenahalli lake, Karle tech park etc, Its just minutes away from your work place.

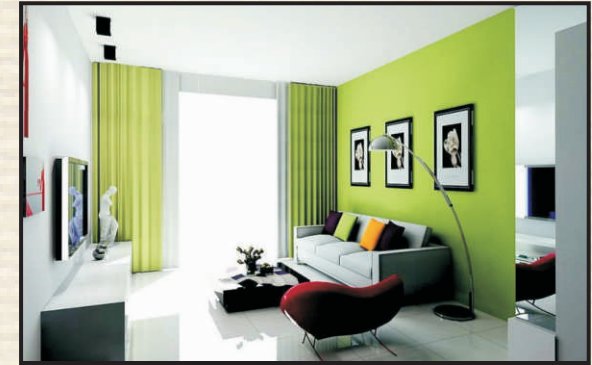


Splendor a prestigious project of ATZ PROPERTIES situated close to the heart of the IT hub Manyata Techpark and other Tech parks which are housing most of the Fortune and top MNCs. A truly magnificent and modern housing project with 63 beautifully designed luxury apartments. The project is a 6 storey masterpiece including basement designed to satisfy your hunger for lavish lifestyle this coupled with a welcoming water body perfectly placed as per vastu on the north east to energies your day and night.

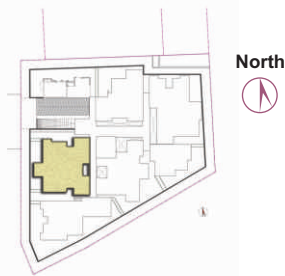
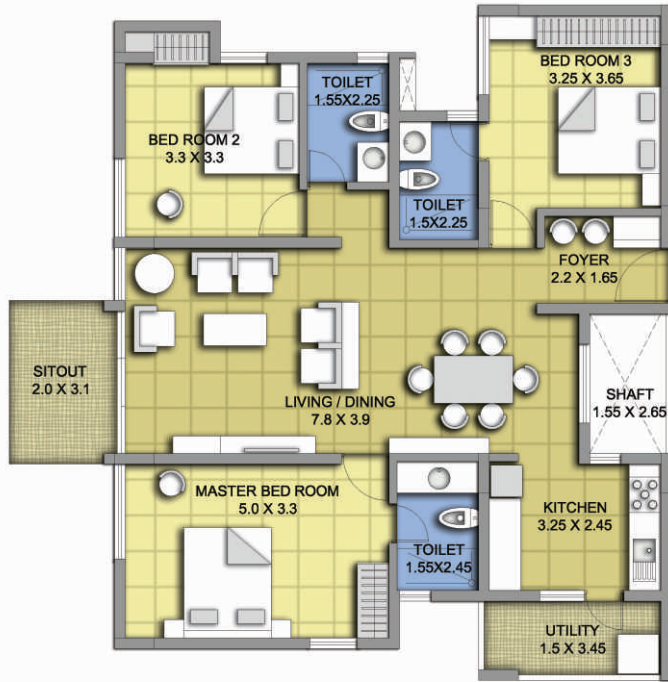




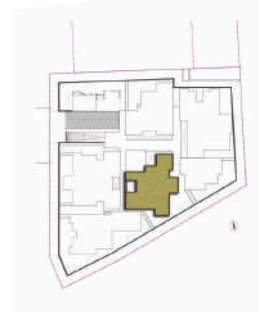
ATZ ROCKVIEW The best of both the worlds ie Urban and Rural is the place where our project lies, it is just about 500 meters and about 5 minutes walk from Manyata tech park housing Top Fortune 500 companies. A well lavishly designed project from top architect of Bangalore, VASTU compliance in all respect, with 45% of green area, with about 53 units consisting of 2 BHK and 3 BHK, housing all amenities, such as A Club house, 24 x 7 Security, Intercom Connectivity, Rain Water Harvesting, Swimming pool, Jogging Track, Basketball Court (Half Court), Special Play-pan for kids, Immaculate Landscaping, spacious car park and natural Rock view.



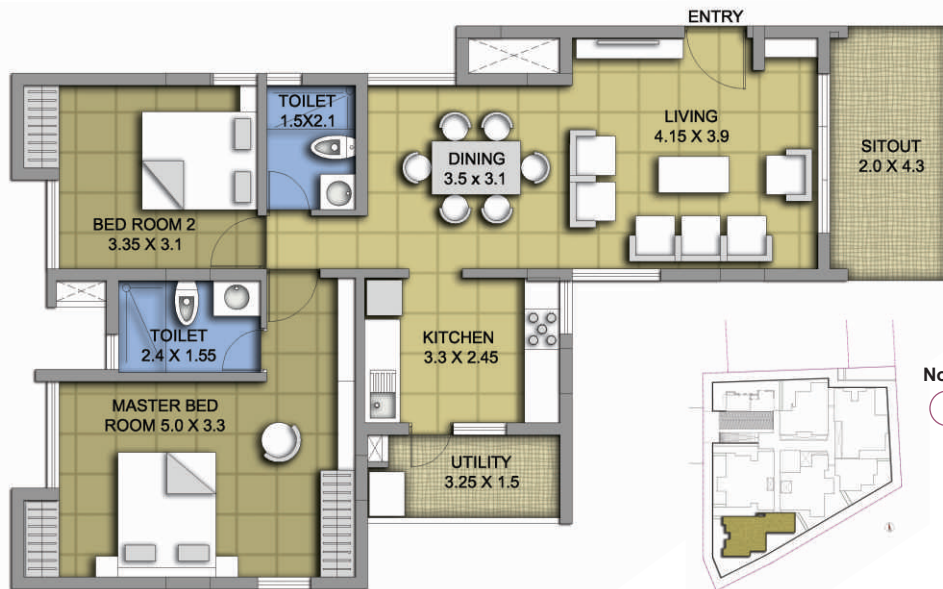
ATZ
ROCKVIEW



UNIT 001
GROUND FLOOR
 101, 201, 301, 401
1650sft.



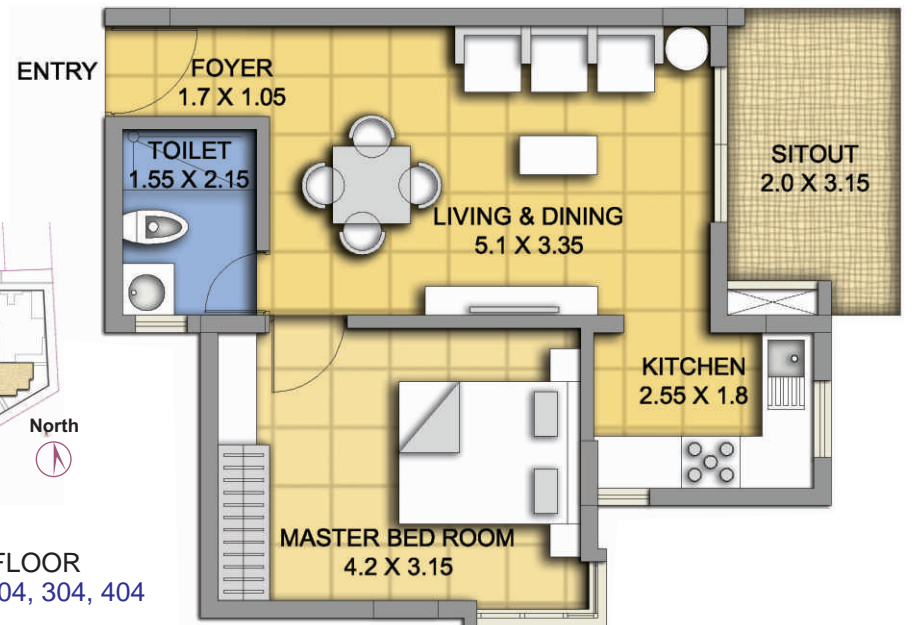
UNIT 003
GROUND FLOOR
 003, 103, 203, 303, 403
1300sft.



UNIT 002
GROUND FLOOR
 002, 102, 202, 302, 402
1320sft.



UNIT 004
GROUND FLOOR
 004, 104, 204, 304, 404
735sft.

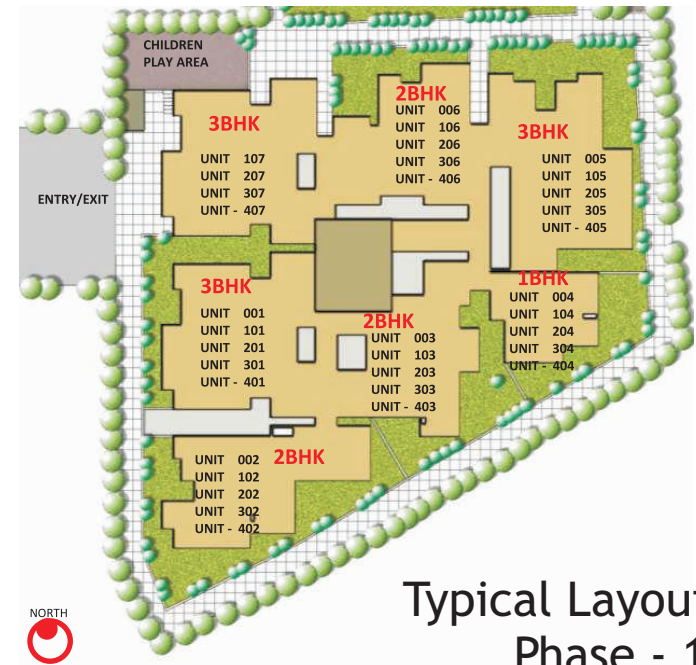




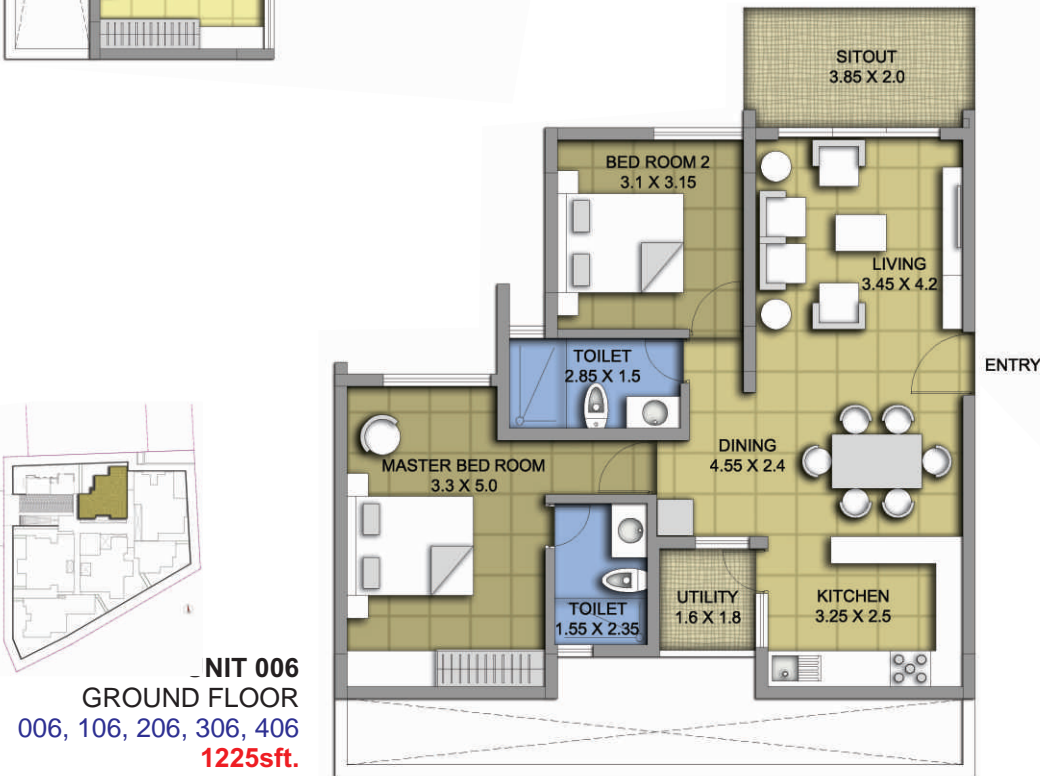
UNIT 005
GROUND FLOOR
005, 105, 205, 305, 405
1625sqft.



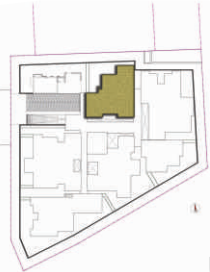
UNIT 107
FIRST FLOOR
107, 207, 307, 407
1650sqft.



Typical Layout Plan
Phase - 1



UNIT 006
GROUND FLOOR
006, 106, 206, 306, 406
1225sqft.



PHASE - 1



PHASE -2





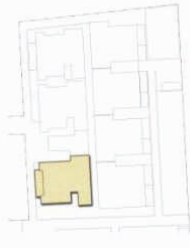
UNIT PLAN - 2 BHK



UNIT - 001

Supper Built Area
1150 sft

UNIT PLAN - 2 BHK

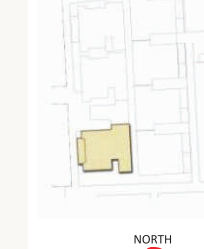


UNIT - 101

Supper Built Area
1150 sft



UNIT PLAN - 2 BHK



UNIT - 201
UNIT - 301
UNIT - 401

Supper Built Area
1150 sft

UNIT PLAN - 2 BHK



UNIT - 002
UNIT - 102
UNIT - 202
UNIT - 302
UNIT - 402

Supper Built Area
1150 sft



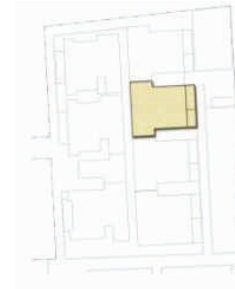
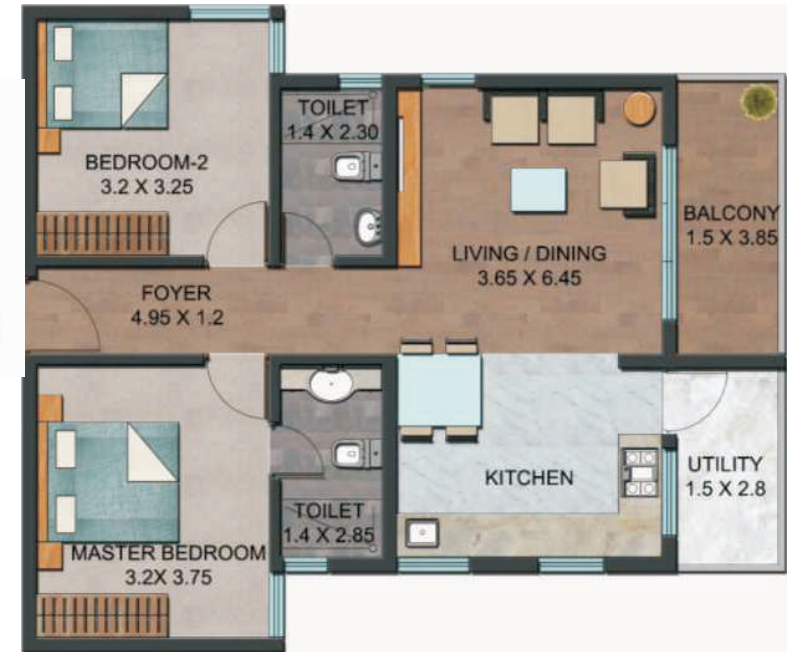
UNIT PLAN - 2 BHK (S)



- UNIT - 003
- UNIT - 103
- UNIT - 203
- UNIT - 303
- UNIT - 403

Supper Built Area
1050 sft

UNIT PLAN - 2 BHK (S)



- UNIT - 004
- UNIT - 104
- UNIT - 204
- UNIT - 304
- UNIT - 404

Supper Built Area
1050 sft

UNIT PLAN - 2 BHK (S)



- UNIT - 005

Supper Built Area
1050 sft

UNIT PLAN - 2 BHK (S)

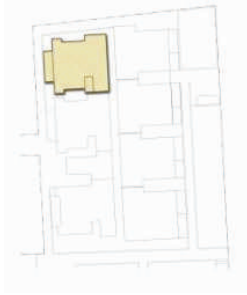


- UNIT - 105
- UNIT - 205
- UNIT - 305
- UNIT - 405

Supper Built Area
1050 sft



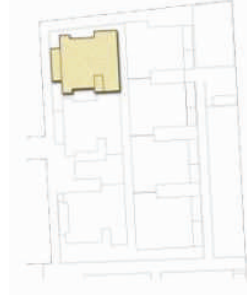
UNIT PLAN - 2 BHK (I)



UNIT - 006

**Supper Built Area
1150 sft**

UNIT PLAN - 2 BHK (S)

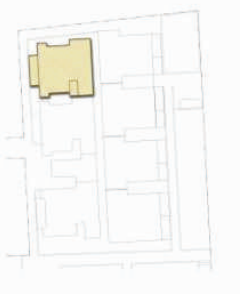


**UNIT -106
UNIT -206**

**Supper Built Area
1150 sft**



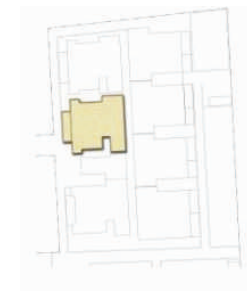
UNIT PLAN - 2 BHK (I)



**UNIT - 306
UNIT - 406**

**Supper Built Area
1150 sft**

UNIT PLAN - 2 BHK (I)



UNIT - 007

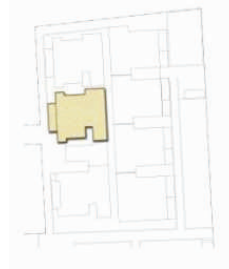
**Supper Built Area
1150 sft**



Typical Layout Plan Phase - 2



UNIT PLAN - 2 BHK (I)



UNIT - 107
UNIT - 207
UNIT - 307

Supper Built Area
1050 sft



UNIT PLAN - 2 BHK (I)



UNIT - 407

Supper Built Area
-1150 sft



Site Plan





Project Specifications:

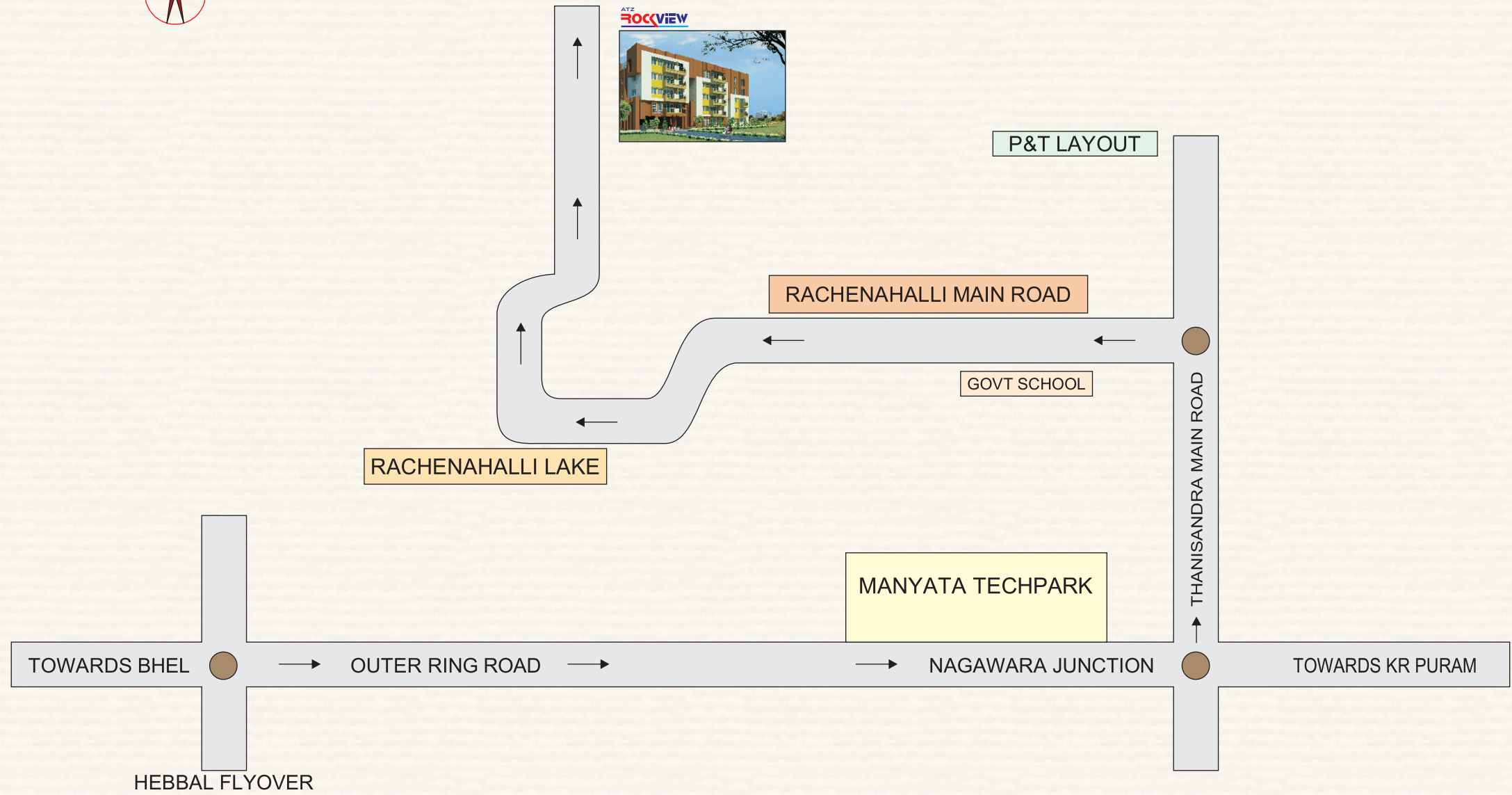


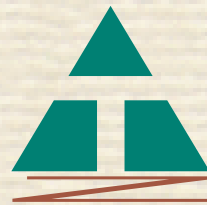
AMENITIES

- Swimming pool.
- Library and Reading room.
- Club House.
- Multi Gym and health spa.
- Children play area.
- Party hall.

Structure	: RCC frame earth quake resistance structure.
Walls	: 6" cement solid blocks for exterior wall and 4" solid blocks for internal walls.
Flooring	: Vitrified Tiles flooring for Living, Dining and kitchen, Ceramic tiled flooring for balconies.
Doors	: Main door with seasonable Teak wood frame with teak wood shutters and internal doors sal wood frame flush shutters.
Kitchen	: Black granite kitchen platform with stainless steel sink, 2 feet height dadoing in ceramic tiles.
Electrical work	: copper wiring with Anchor/Havel's cables with Anchor rider switches, Tv & telephone points in the living room and master bedroom.
Toilets	: Anti skid ceramic tile flooring and glazed tile dado up to door height with reputed sanitary ware and CP fittings, with provision for geyser.
Finishing	: Emulsion paint for walls and enamel paint for wood and steel grills, exterior with Apex paint.
Lift	: Two automatic lift Johnson make suitable capacity elevators.
Generators	: Stand by generators for lift, motor and common area lighting.
Parking	: Adequate basement car parking facility.

LOCATION MAP





ATZ PROPERTIES

12/1, Plain Street, Infantry Road Cross, Bangalore -560001.

9686031122, 9035717007, 9035718007

E: info@atzproperties.in | www.atzproperties.in