



*Feel the shower
of Happiness...*



Elecasa
the classy home...



SUN PROJECTS INDIA PVT. LTD.

Builders & Developers

An ISO 2015 Certified Company

T. C. 4/1044, "Sreebhas", Kowdiar, Trivandrum 695003.

Phone: +91 471 2539933, 2432747, UAE: 050 777 3274

email: mail@sunprojectsindia.com, www.sunprojectsindia.com



Confederation of Real Estate
Developers Associations of India





Elecasa
the classy home...

Lush green backdrop...

A fresh environ with cool breeze...

And a lovely home space to celebrate life...

Everyone desires... to stay at a lovely home where life's delightful moments blend perfect within a natural habitat.

Sun Elecasa is uniquely constructed by blending finer design elements to an eco-friendly environment. Elecasa home spaces are delicately structured to go in harmony with natural surroundings. You can really experience a pleasant and peaceful living enjoying the warmth of green habitat.



Luxury
Meets
Location



A HOME SPACE TO **FRAME YOUR CUTEST MOMENTS...**

Sun Elecasa is one of the finer apartment projects from Sun Homes. The esteemed builders always retain a dignity among clients through building homes blending creativity, desire and style in exact proportions. Sun homes own the triumph of many successful projects in Trivandrum by now.



UNLOCK A WORLD OF **HAPPINESS...**

A stress free home space is a dream for many. But here in elecasa, it's not at all a dream. Here you can experience a lively ambience in both indoor and outdoor surroundings. Airy interiors and contemporary designs set in harmony will make your days more comfortable and relaxed.

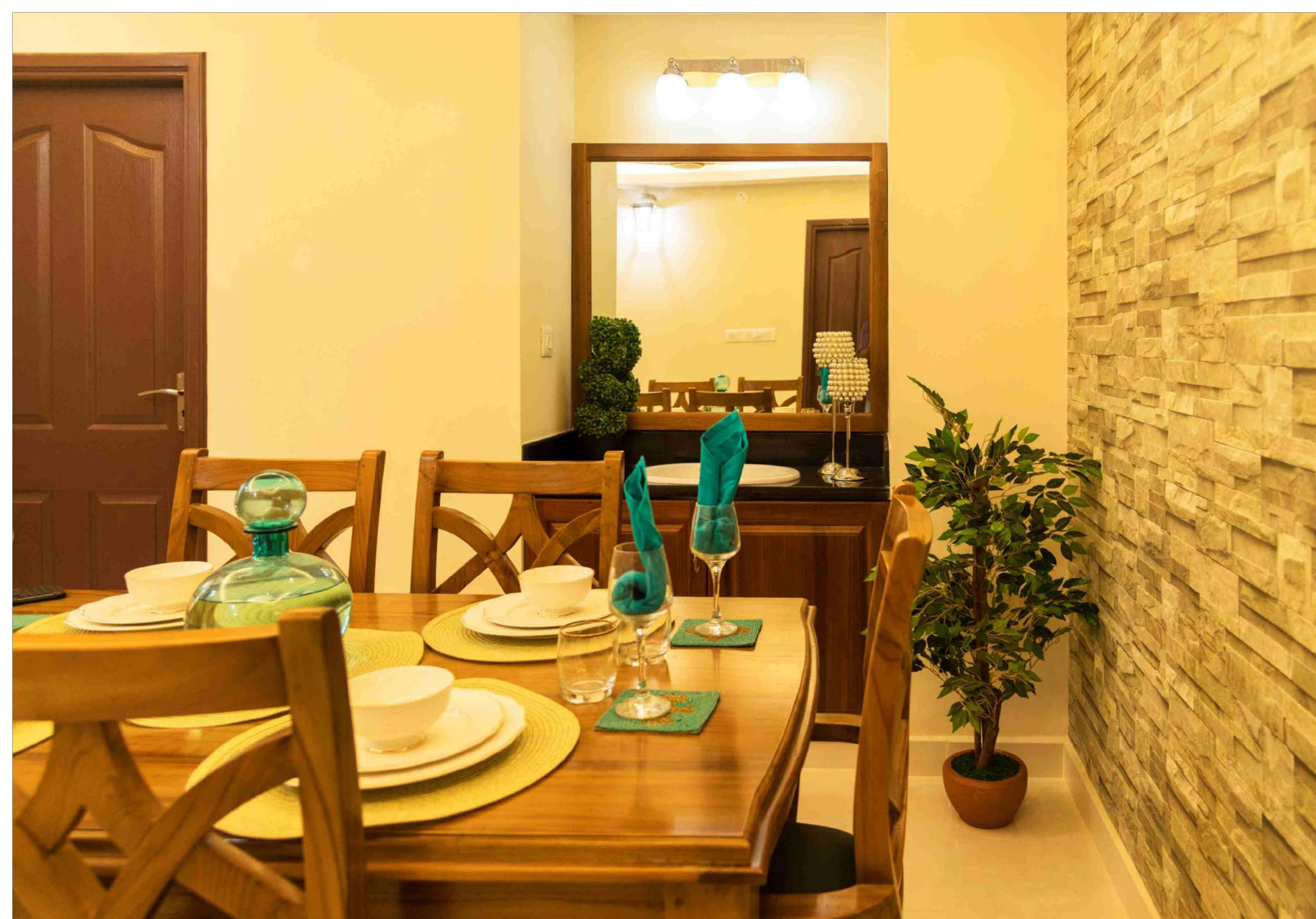
Quality is
not an act
it's a Habit



ADD MORE COLOURS TO LIFE...

Comfort, calmness, style, accessibility, amenities, location, services... All factors that you prefer for a sweet home are there in an Elecasa home and it's what that makes the home more special.

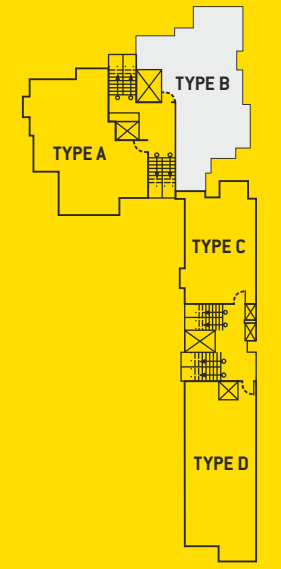
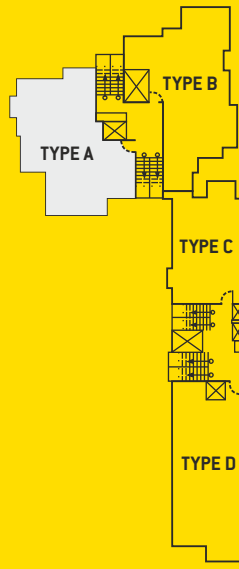
Sun Elecasa, located at Oruvathilkotta provides easy access to all essential amenities. Major facilities and landmarks in the city are within the margins of elecasa. One of the key tourist spots in city - Aakulam lake and boat club, is just few distance away from the elecasa home. Medical college, KIMS hospital, CESS, NISH, KendriyaVidhyalaya, Shopping centres and all other essential facilities are within the margin of elecasa.



START A **CLASSY LIFE**
IN A **CLASSY HOME...**



The specialty of an Elecasa home lies in the creative utilization of space at affordable budget. You can definitely experience the magical blend of artistic elements with luxurious living spaces in each corner of the Elecasa home. Client requirements and serene surrounds are perfectly combined here to make your days more wonderful. Obviously, the best option for a beautiful life is an Eleacsa home.

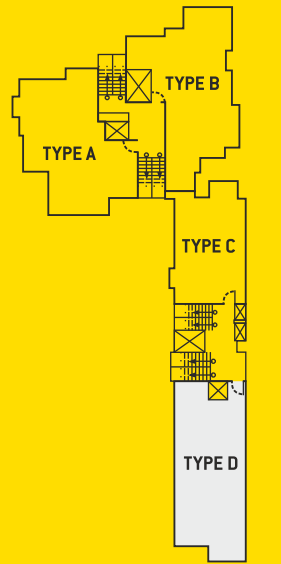
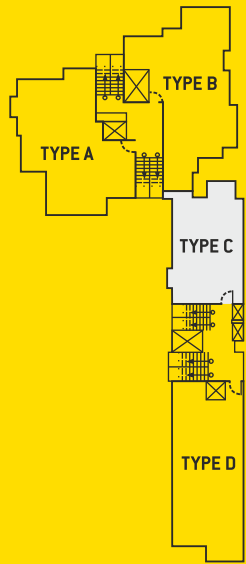


TYPE A
 AREA-1531 Sq.Ft.
 Three Bedroom Apartment

TYPE B
 AREA-1567 Sq.Ft.
 Three Bedroom Apartment

Dimensions may vary during construction. Furniture and fixtures are indicative only

Dimensions may vary during construction. Furniture and fixtures are indicative only



TYPE C

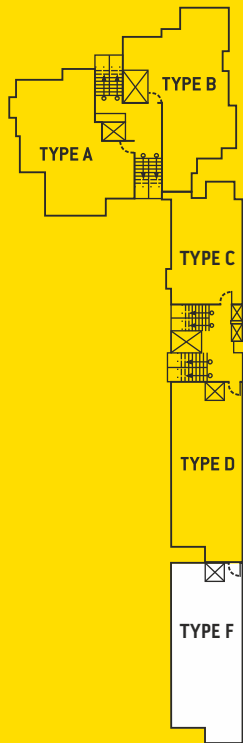
AREA-1073 Sq.Ft.
Two Bedroom Apartment

TYPE D

AREA-1477 Sq.Ft.
Three Bedroom Apartment

Dimensions may vary during construction. Furniture and fixtures are indicative only

Dimensions may vary during construction. Furniture and fixtures are indicative only



TYPE F

AREA-1300 SQ.FT

Two Bed + Study Apartment

Dimensions may vary during construction. Furniture and fixtures are indicative only

SPECIFICATIONS

STRUCTURE : RCC framed structure on pile foundation. **FLOORING** : Elegant vitrified tile flooring for the entire apartment except toilets ceramic tiles for toilets. **DOORS** : Decorative hardwood entrance door, flush - doors for bedrooms and kitchen, flush - door with water resistant coating inside for toilet doors. **KITCHEN** : Counter with black granite top and stainless steel zinc, ceramic tiles above the counter to the height of 45 cm, single-bowl zinc with black granite top in work area. **WINDOWS** : Aluminium powder coated windows with glazed sliding shutters and safety grills. **TOILETS** : Ceramic tile for floors and dadoing up to door height, concealed piping white sanitary fitting (RAK or equivalent) & CP fittings (JAGUAR or equivalent), provision for geyser connection in bathrooms except servant - toilets. **PAINTING FINISH** : Putty and OBD finish for all internal walls, Enamel paint for steel work for interior doors, 2-coat exterior paint for outside walls. **ELECTRICALS** : Concealed conduct wiring with copper conductor, adequate lights, fan and plug-points controlled by ELCB & MCB with independent KSEB meters. **TELEPHONE** : Concealed wiring for telephone in living and master bedroom. **CABLE TV** : Provision for cable TV connection in living room. **POWER BACK-UP** : For lift, Water Pump, Common area lighting, Lights, Fans, TV and Telephone charging points in apartments.



COMMON FACILITIES

Decorative Lobby | Provision for Health Club | Provision for Meeting Hall | Game Room | Wi-Fi-Internet Connection | Roof Top Party Area | One Passenger lift & One bed lift (Johnson Make) | Reticulated gas supply | Intercom | Solid Waste Management | STP - Sewage treatment plant | Caretakers and driver rest rooms

HIGHLIGHTS OF THE PROJECT

- In the heart of the city
- 24hour generator back up
- 24 hour security
- 2 Automatic Lifts
- Servants toilets
- High - end specifications
- 2-Floor covered car parking
- Multi-purpose Recreation Hall
- Individual letter - box & Name board



OUR PROJECTS



Sun Sapphire
KESAVADASAPURAM



Sun Elegance
POOJAPPURA



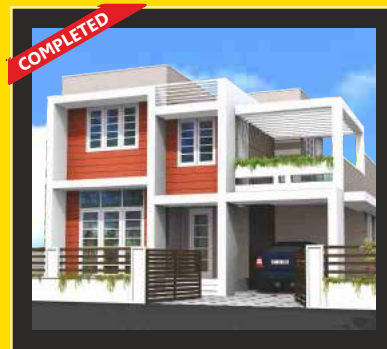
Sun Hessonite
PONGUMOODU



Sun Royal
COMFORTS WITH TRANQUILITY
KARVATTOM, NEAR TECHNOPARK



Elite
VIKAS BHAVAN



Sun Ayodhya Gardens



Sun Gardens
PULIYARAKKONAM



Home Care Division
24 x 7 Call: 97 45 00 01 70

One of our special features is the service to the non resident customers. Even when you are not staying in the apartments we help you to rent it to prospective tenants. Our property management team helps to advertise, show in the prospective customers and report to owners. This is highly beneficial for NRIs and an ideal investment offer.

We cement our relation with our customers with an everlasting bond. A bond that is testified by the post completion services we offer. Our Home Care Department sets you free of all your hassles even in your absence.

To ensure that your home and its premises are kept clean and healthy, we also arrange its occasional cleaning. Render a dazzling look to your home with exquisite interior designs and layout. We assist in giving tips get the best interiors, wardrobes, cabinets, customized furniture, designer kitchens, cupboards and carpets. Our Home Care department undertakes tax remittance telephones, electricity bills.

