



Roohi Constructions  
BUILDERS & PROMOTERS

**Roohi's  
Sathyam**

YOUR DREAM... COME TRUE



**Roohi's  
Sathyam**



K A R A P A K K A M



### **Roohi's "Sathyam" means Beauty**

Roohi Constructions proudly presents Roohi's Sathyam, a sparkling celestial star on the firmament of contemporary living in the speedily upcoming residential zone of Karapakkam. This stylish new residential development boasts of sophisticated architectural designs and refreshing scenic beauty with an enviable package of ultra-modern, high-tech comforts and superior features designed to make sure that you live a life of great luxury and grandeur.

"Sathyam" is a residential apartments within the city limits and ten minutes drive from Adyar. It is well connected with Shopping malls, Retail outlets, Markets, Schools and Hospitals. As OMR is the talk of the town it is in the prime location of the IT Corridor.

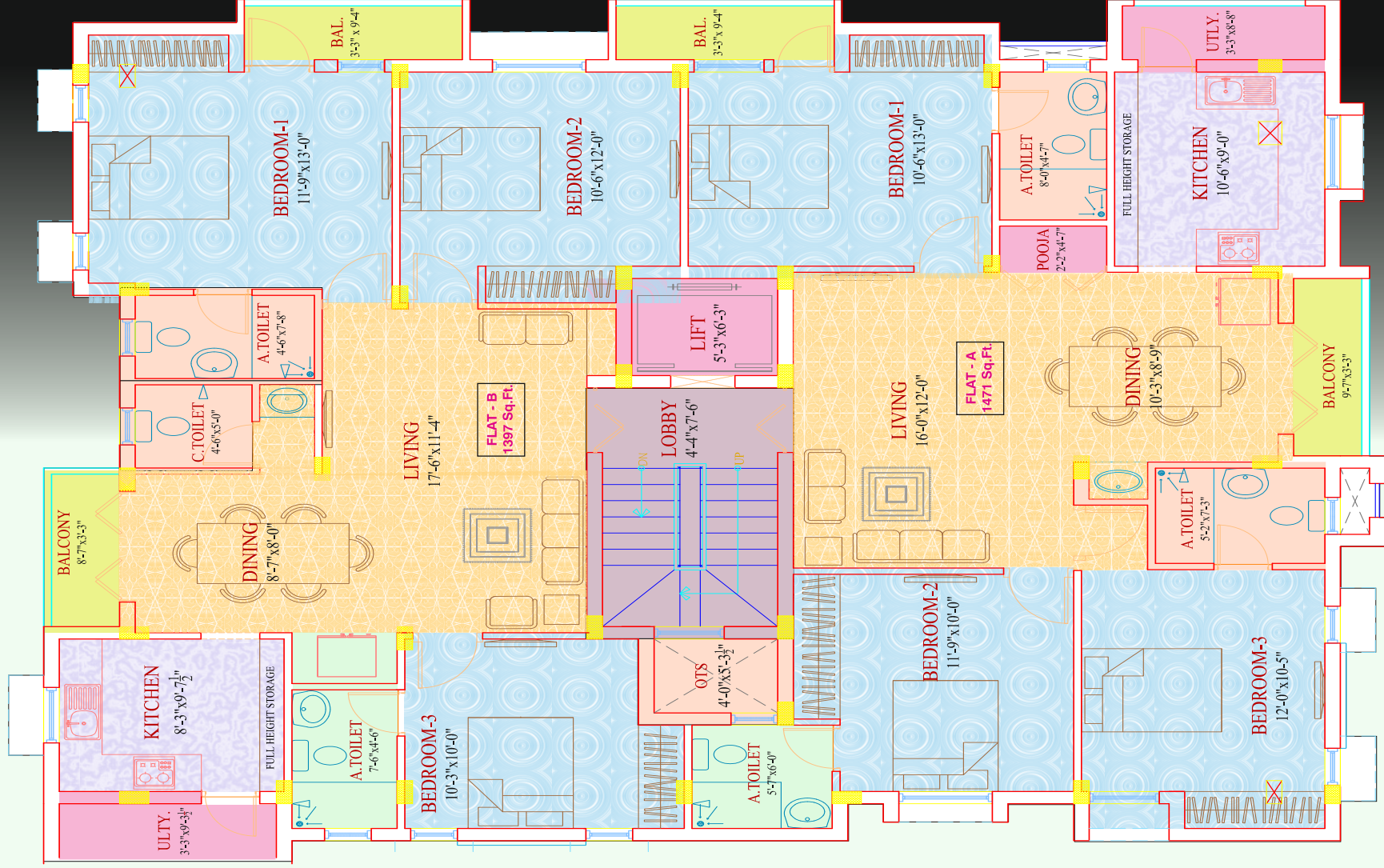
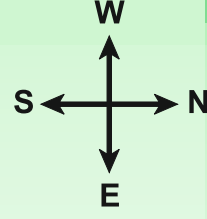
### **AMENITIES**

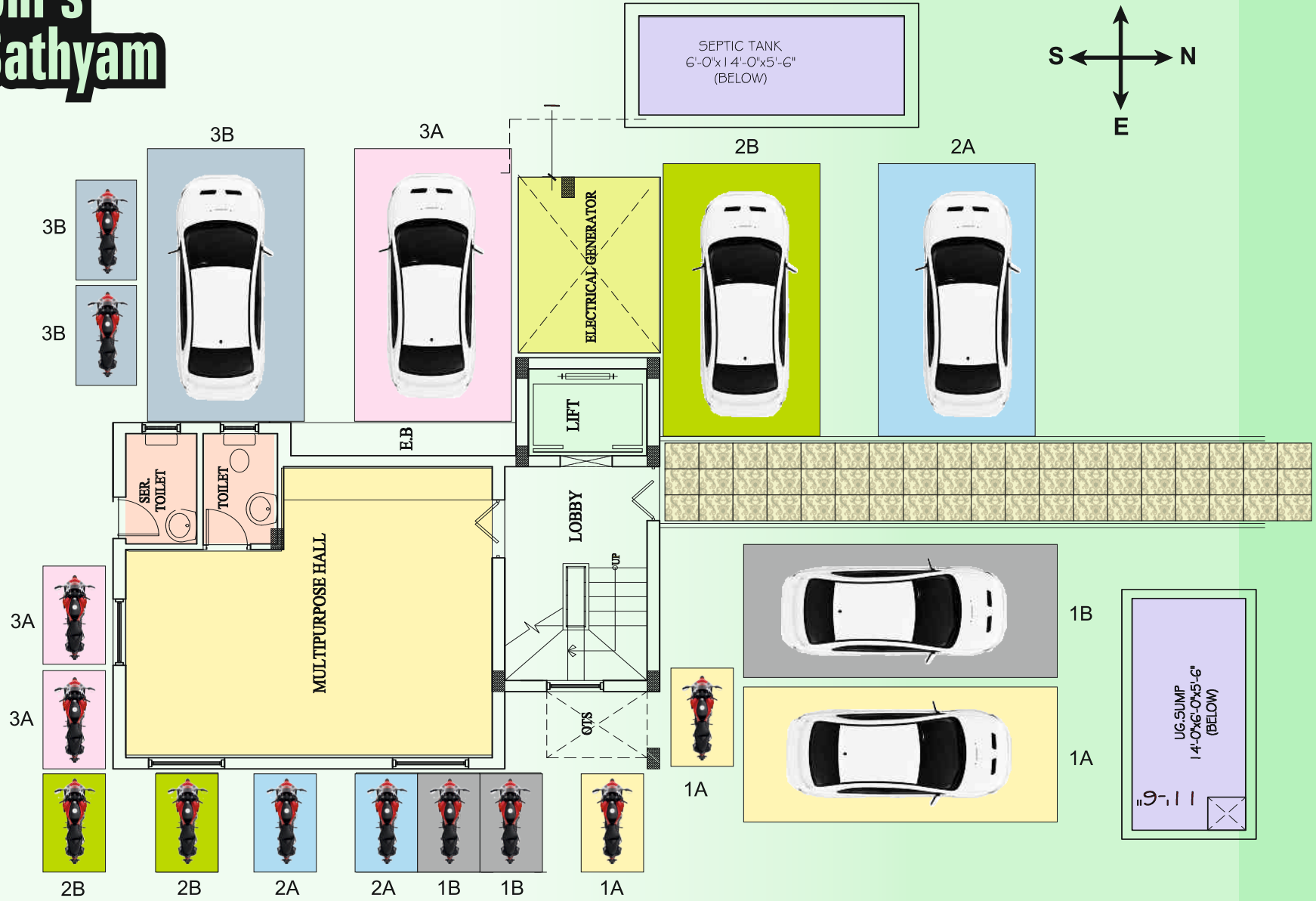
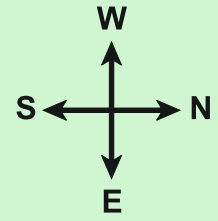
Embellished with an exceptional array of alluring amenities ROOHl's "SATHYAM" strings together the best in comfort style and sophistication to redefine the concept of luxury living like never before

- Covered car park
- Terrace party area
- Landscaping at the sides
- Extensive rainwater harvesting
- Separate restroom for Drivers/Servant maids

### **THOUGHTFUL ATTENTION TO DETAIL**

- Vitrified Tile Flooring
- Designed Ceramic Tiles on Toilet Walls
- Anti-skid Ceramic Tile Flooring for Toilets
- Granite cooking Platform with SS sink
- Sanitaryware – Parryware / Hindware
- Bathroom Fittings – Jacquar Continental Range
- Windows- Wooden / UPVC / Secolar
- Putty Finish for the Entire Apartment
- Modular Switches
- Covered car park





P A R K I N G



### **Structure**

RCC framed structure with RCC foundations. Anti-termite treatment will be provided. 9" / 4½" (deemed necessary) thick brick / solid blocks wall for the outer and 4-½" thick brick /solid blocks wall for the internal partition. Rain water harvesting.

### **Wall finishes**

Internal walls : emulsion over putty application  
Toilet walls: glazed ceramic tiles of 2 colors with designer border up to 7 feet  
Toilets kitchen and balconies: Putty based Emulsion finish  
Dado 2 ft. above the kitchen platform & glazed ceramic tiles.  
Exterior walls: cement plaster painted to architect's specification

### **Ceilings**

Ceiling: Putty based Emulsion finish

### **Flooring**

Vitrified tiles (2' x 2').  
Toilets anti-skid ceramic tiles.

### **Door Frames and Entrance Door - TEAK**

Wood framed soiled wooden paneled doors, natural / melamine finish, Designer lock of prime brand

### **Bedroom doors**

30mm thick premium moulded skin doors with enamel paints of both sides.  
Toilets water proof flush doors.

### **Window**

UPVC/ equivalent windows for frame and shutters, plain glass will be used. Painted MS grills inside.

### **Utility**

Glazed Tiles upto 3 feet

### **Kitchens**

Granite Platform, Single bowl SS sink.

### **Bedrooms**

One loft and one wardrobe.

### **Electrical**

Quality switches, plug, telephone, TV and Computer points with ISI cables  
AC and heater points

### **Plumbing**

ISI Mark fittings premier CPVC and P.V.C. Pipes  
Wash basin in all bathrooms and Dining hall.

### **Power Supply**

3-Phases power supply

### **Water**

Bore well, underground sump and Overhead Tank of adequate capacity

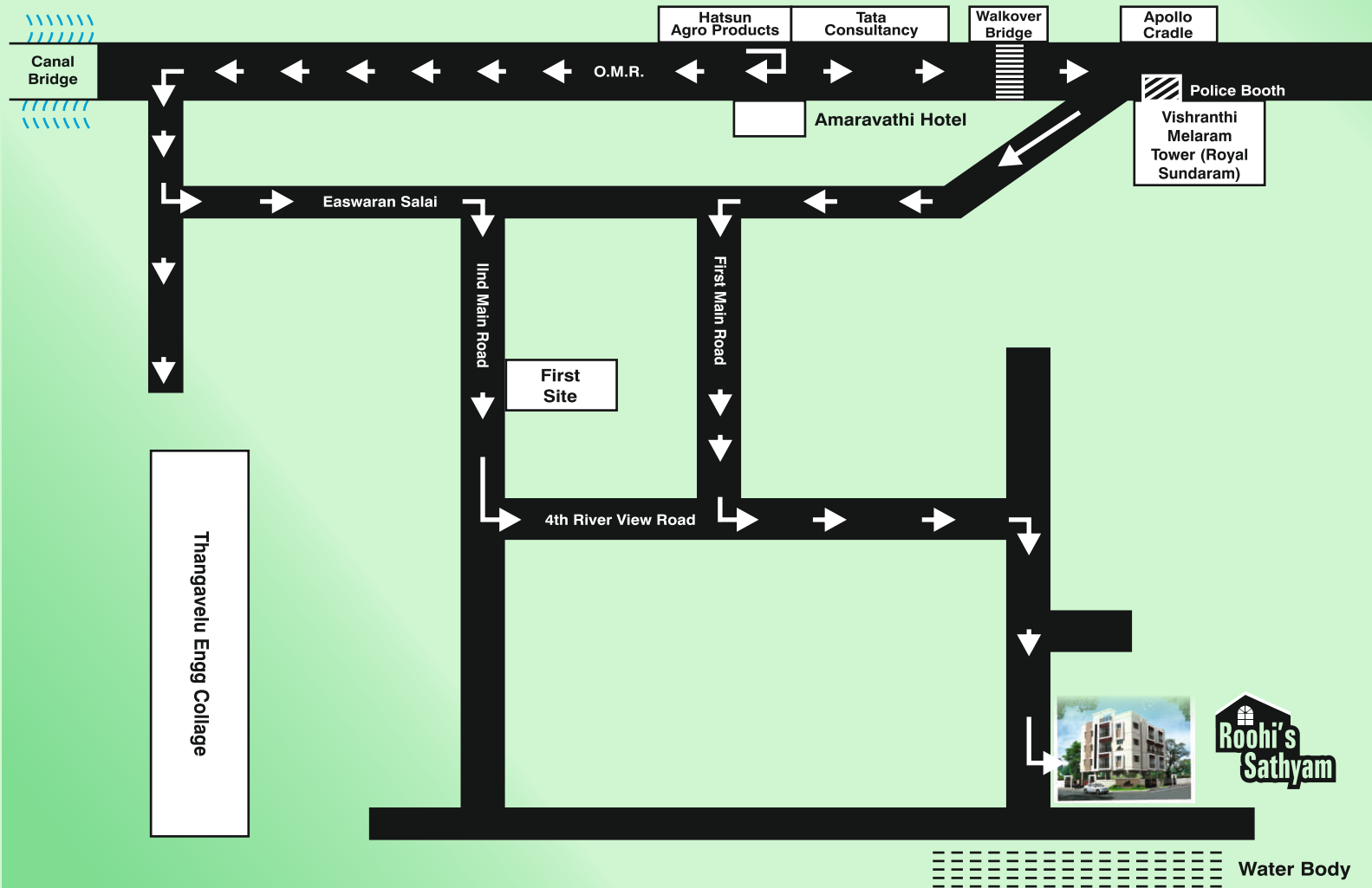
### **Car Park**

Grano-flooring



SANDSTONE

SANDSTONE



## Roohi Constructions

**BUILDERS & PROMOTERS**

No. 1, Khana Bagh Street, 1st Lane, Opp. Ambika Medicals,  
Triplicane, Chennai - 600 005.

Ph.: +91-44-2858 2779, Mobile : **95660 55771**

E-mail : roohiconstruction@yahoo.com

Website : www.roohiconstruction.com



No. 85, River View Co-operative  
Housing Site, Karapakkam, Chennai.