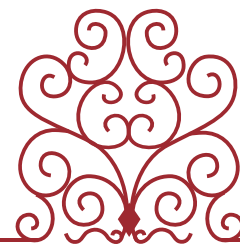




A Project by

LANDMARK PROPERTIES

Promoters & Builders



LANDMARK

EXOTICA

QUALITY • VALUE • FINESSE



SPECIFICATIONS & AMENITIES

Why is it that we look to quantify the space and features of our homes rather than observing the utility of those attributes? Not always will the expansion in figures please you. At times, it's also about the excellent quality specifications laid-out for your home, thus gift-wrapping a contemporary lifestyle, for you & your family. With Landmark Properties, you need not look further!

- Earthquake resistant framed structure.
- 6" thick B.B. mass for external walls +6" thick B.B. mass for internal walls
- Sand faced external plaster with exterior Acrylic Emulsion paint
- Gypsum finished internal plaster with oil bound distemper paint
- 24 X 24 Vitrified flooring and skirting in all rooms and Tiles in bathroom, toilet upto ceiling level
- Three Track Powder coated aluminum windows with SS Mosquito Net, M.S. Grill and black granite Window Sil
- Black granite Door frames for Bathroom
- Concealed plumbing with Jaquar or equivalent make C.P. fitting in all toilets and kitchen and electrical wiring in concealed with M.C.B. with modular switches in each room
- "L" shaped Granite top Kitchen otta with stainless steel sink in kitchen with provision for exhaust fan and water purifier
- Main door of Veneer finish with brass fittings . Internal doors laminated. All door frames in teak wood (except toilets)
- Lift of reputed company / make with battery back-up
- Solar Water Heating System
- Underground and overhead water tanks with pump arrangement and Auto level controllers
- Fire fighting Systems according to PMC norms
- Attractive Entrance Lobby
- Intercom Facility with Electro-magnetic Safety Door for staircase
- S.S. Railing for Terrace with Glass



A LANDMARK OF EXCELLENCE

Landmark Exotica - Overview

Welcome to Landmark Exotica, Baner, a luxurious residential paradise located in the cradle of nature of the Baner-Pashan hills. Landmark Exotica is located on the main Baner Pashan Link Road. A choice of luxurious 2 and 3 BHK Apartments would inspire your senses and simply take your breath away. Enjoy the panoramic view of the Baner hills and feast your senses with verdant environs and a soothing climate throughout the year.

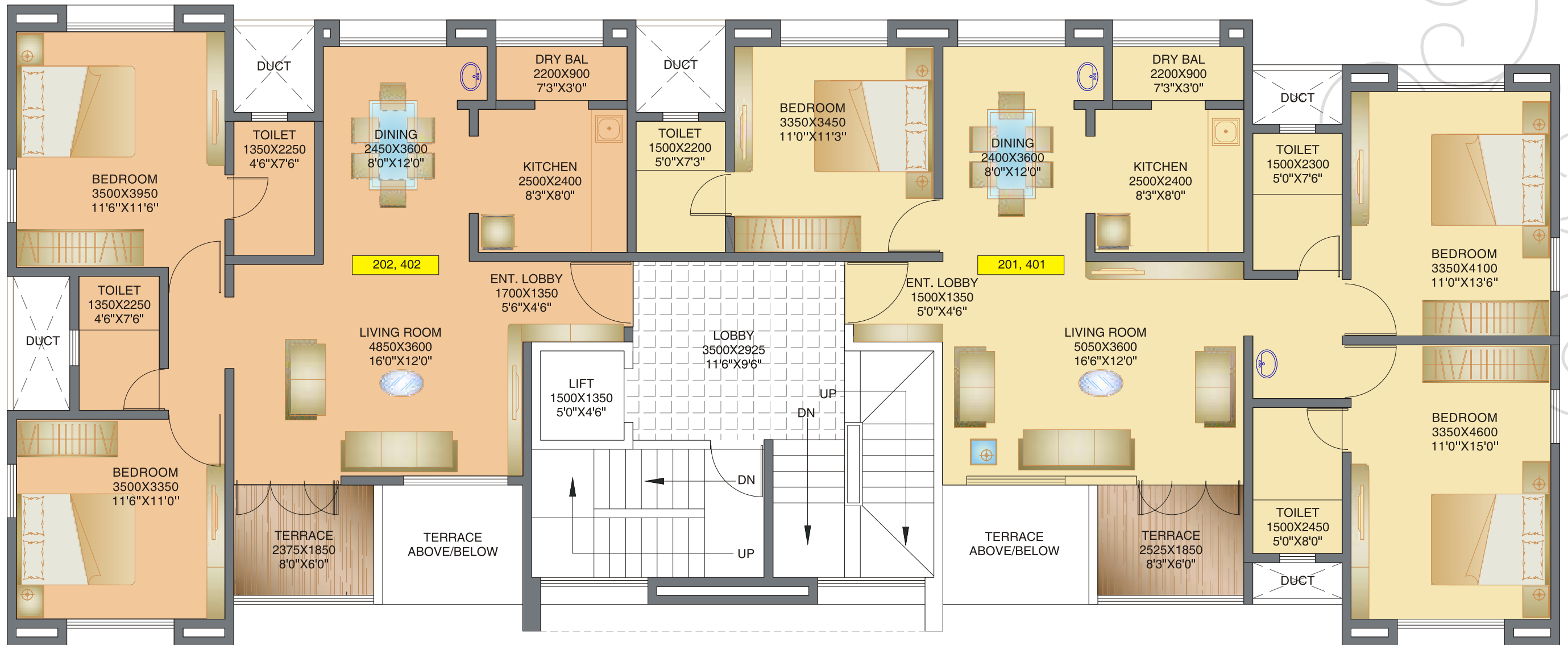
Landmark Exotica is a creation of a legacy in space that stands the test of time. Designed for the crème de la crème who aspire a lifestyle home for their family, it has all the ingredients to give you grandeur and finesse at an elite address. A touch of class in every detail is clearly evident at Landmark Exotica. Careful attention to your lifestyle and preferences are a key consideration with plentiful light, ventilation, open spaces, green areas, without any compromise on privacy. Landmark Exotica takes luxury with a personal touch to an altogether new level. The grand persona of Landmark Exotica will redefine all your comfort and lifestyle paradigms. Landmark Exotica is an evolution that harmonizes affluence with trust. Indulge deeply into life's passions because you live just once.



A LANDMARK
OF VALUE



A LANDMARK OF QUALITY



--- 9.00 M WIDE ROAD ---

TYPICAL 2nd, 4th FLOOR PLAN

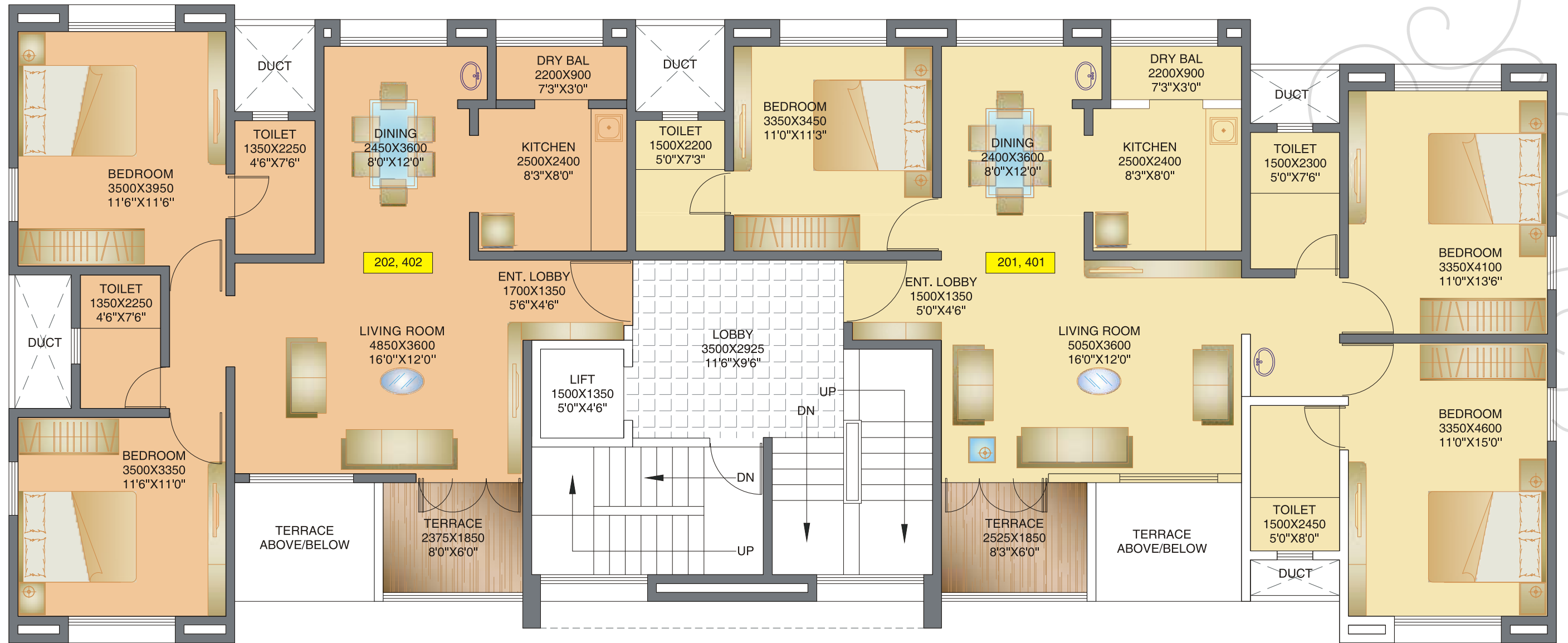
SALABLE AREA STATEMENT (In sq. ft.)

TYPE	CARPET	LOBBY	TERRACE	SALEABLE
3.00 BHK (101, 301, 501)	978	22	49	1362.00
2.00 BHK (102, 302, 502)	750	25	47	1069.00

A LANDMARK
OF PRIDE



A LANDMARK OF OPULENCE



--- 9.00 M WIDE ROAD ---

TYPICAL 1st, 3th, 5th FLOOR PLAN

SALABLE AREA STATEMENT (In sq. ft.)

TYPE	CARPET	LOBBY	TERRACE	SALEABLE
3.00 BHK (101, 301, 501)	978	22	49	1362.00
2.00 BHK (102, 302, 502)	750	25	47	1069.00

LOCATION MAP



LANDMARK PROPERTIES
Promoters & Builders

Office : 7, Ratan Apartments,
100, Mayur Colony, Karve Road,
Pune - 411038

Tel. : +91 20 2545 3093
Email : landmarkpropertiespune@gmail.com
Web : www.landmarkpropertiespune.com