

Ever Green
Properties & Investments



EGPI
SAATHVIC

Ever Green Properties and Investments

No 14/1, 4th Cross, Sampige Road, Malleshwaram,
Bangalore - 560003

Ph: 080 - 4206 7105 | Mob: 098405 43516
Mob: 07760607227

Note: This brochure is purely conceptual and does not constitute a legal document. The architects and promoters reserve the right to change, delete or add any specification or elevation mentioned herein.

For
Exceptional
People

Website: www.egpi.in Email: contact@egpi.in



DESCRIPTION

Aesthetically modeled 2/3/4 BHK apartments overlooking a scenic lake located in a pollution free environment, The location is a compliment to our project with the presence of residential friendly commercial establishments. The locality even covers very good educational institutions, Tech parks, market, bank, ATM, hospital, Mall, school, restaurant etc. BEL circle and Airport Road are just few minutes drive from our project.

SPECIFICATION

Infrastructure

Walls

RCC framed structure with solid cement block walls

Main door

Ghana teak solid wooden door with shutters

Window

UPVC window (polycad or equivalent make) for windows and ventilators

Bedrooms

Telephone, T.V point and AC provision in master bedroom and Two way light control in all the bedrooms

Kitchen

Adequate power points
Provision for exhaust fan
Provision for fixing water purifiers near sink
Plumbing and drainage connection with power point for washing machine
Ceramic tile above counter upto 2 feet height

Flooring

Vitrified tiles for apartment, ceramic tiles for balcony

Internal door

Solid honne/mathi wood frame with skin wood door shutter

Hall/dining

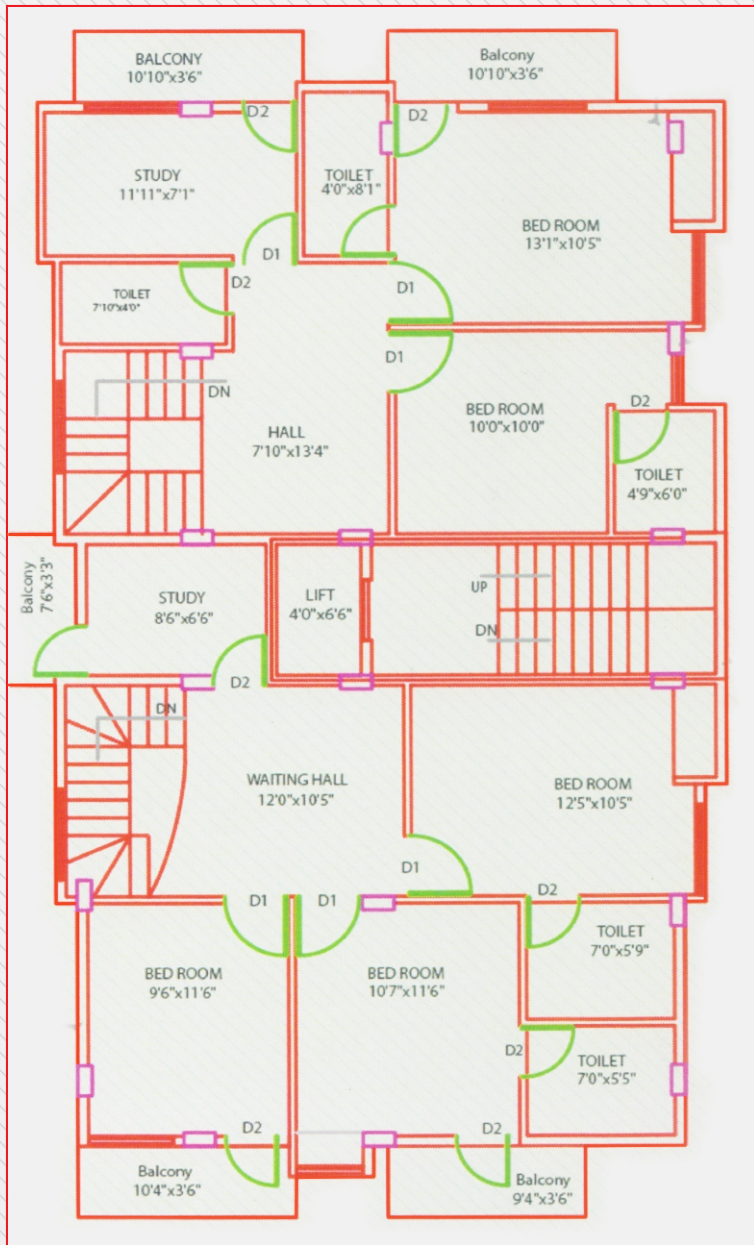
Telephone and TV point connection, Wash basin for dining

Bathroom

Floor or Wall mounted E.W.C for all toilets
All tap fittings of ESS make or equivalent
Ceramic tiles (anti skid) for bathrooms floors
Provision for exhaust fan

AMENITIES

- Over head water tank and underground sump tank with required pumps (automatic pumps)
- Automatic water level controller for overhead tank
- Bore well in addition to corporation water connection



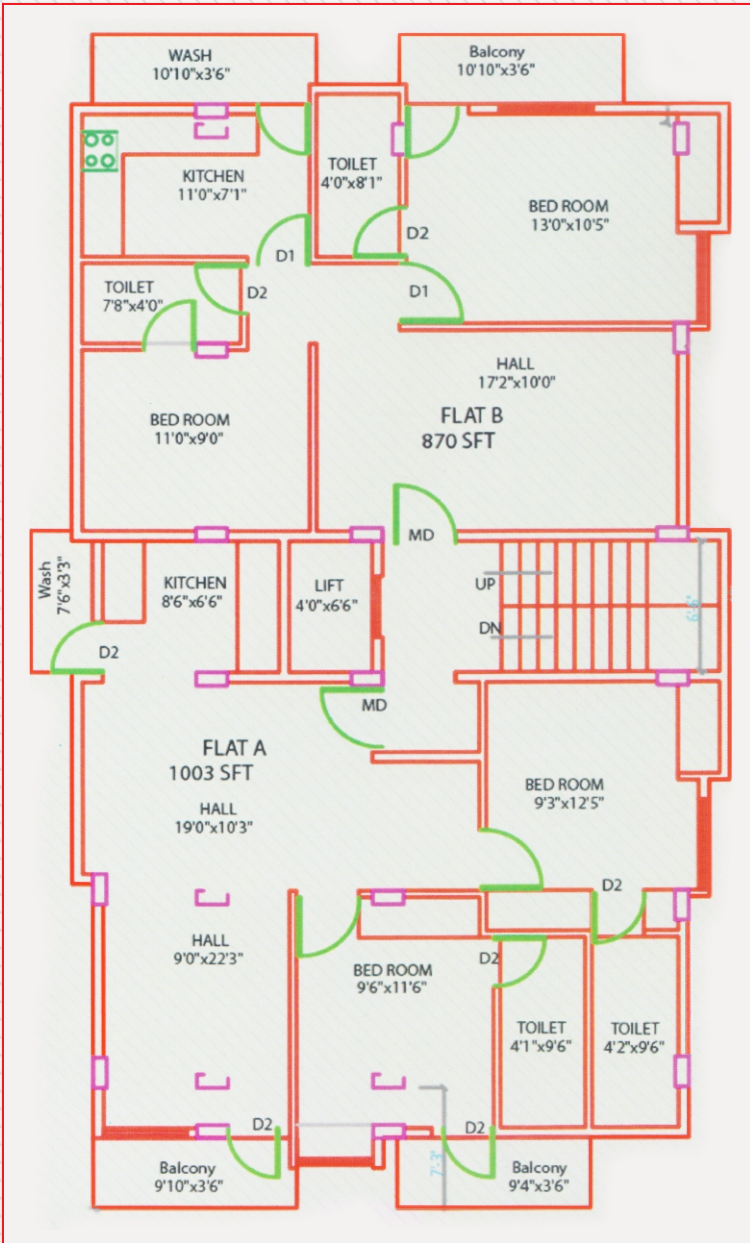
SECOND FLOOR PLAN



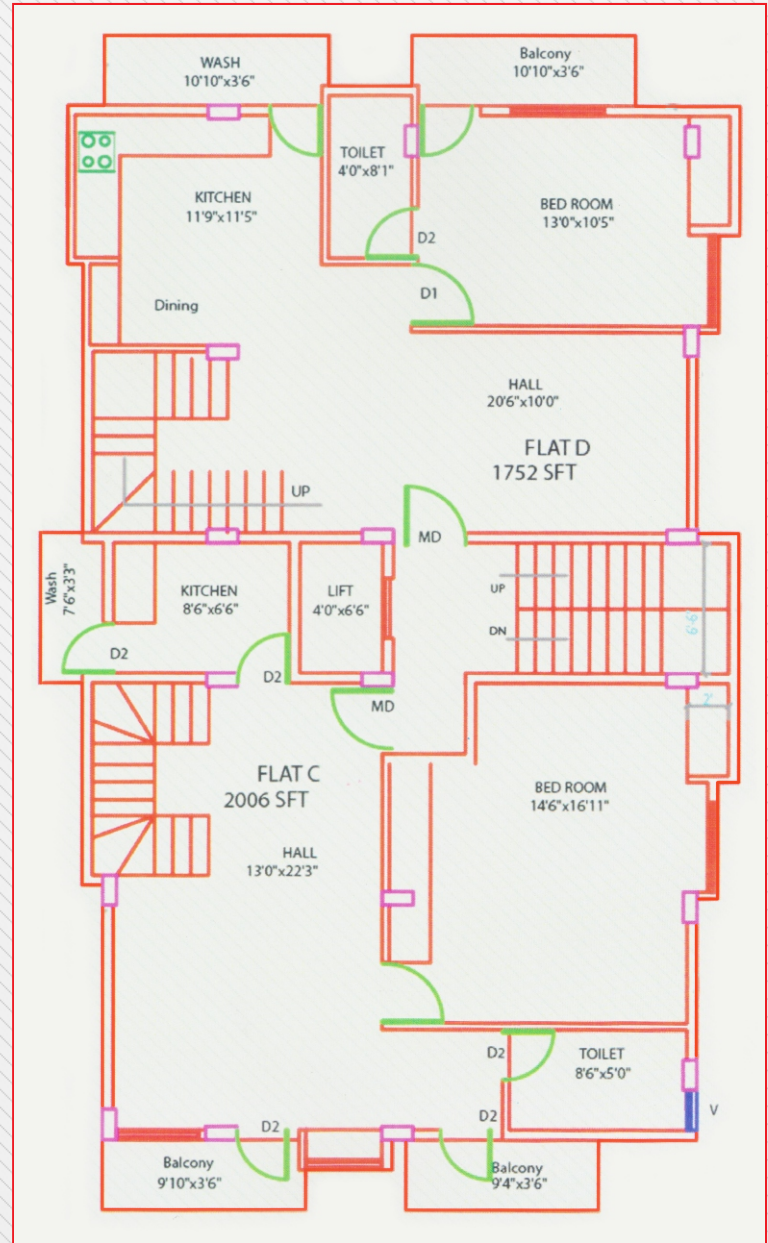
HIGHLIGHTS

- Elevator of suitable capacity
- Attractive melamine polished Ghana teak wood main entrance door.
- Vitrified tile flooring for apartments and granite for staircase and common area
- Design glazed tile on wall upto 7 feet height for bathrooms
- Stainless steel sink and granite platform for kitchen
- Off white colored sanitary ware (hindware/parryware) in all the toilets
- Premium acrylic emulsion paint over putty finished ceilings and walls
- Modular electrical switches of anchor roma make
- Electrical wiring using anchor/havells/v-guard
- Spacious car parking

@
Nanjappa Layout,
Vidyaranyapura



TYPICAL FLOOR PLAN



FIRST FLOOR PLAN

