


Beyond happiness

 **CRESCENT**
ZINNIA
PREMIUM APARTMENTS
Off. Thondayad Jn., Bypass Road, Calicut



Crescent Zinnia, Premium Apartments

Crescent Zinnia embodies the true essence of a home. The apartment stands tall in a serene neighbourhood just few minutes away from the heart of the city. Be in the midst of comfort and luxury that brings a sense of belonging in life.

Crescent Zinnia carries the hallmark of all Crescent ventures. The most trusted home makers of Calicut renowned for their remarkable projects, timely delivery and exceptional customer service.

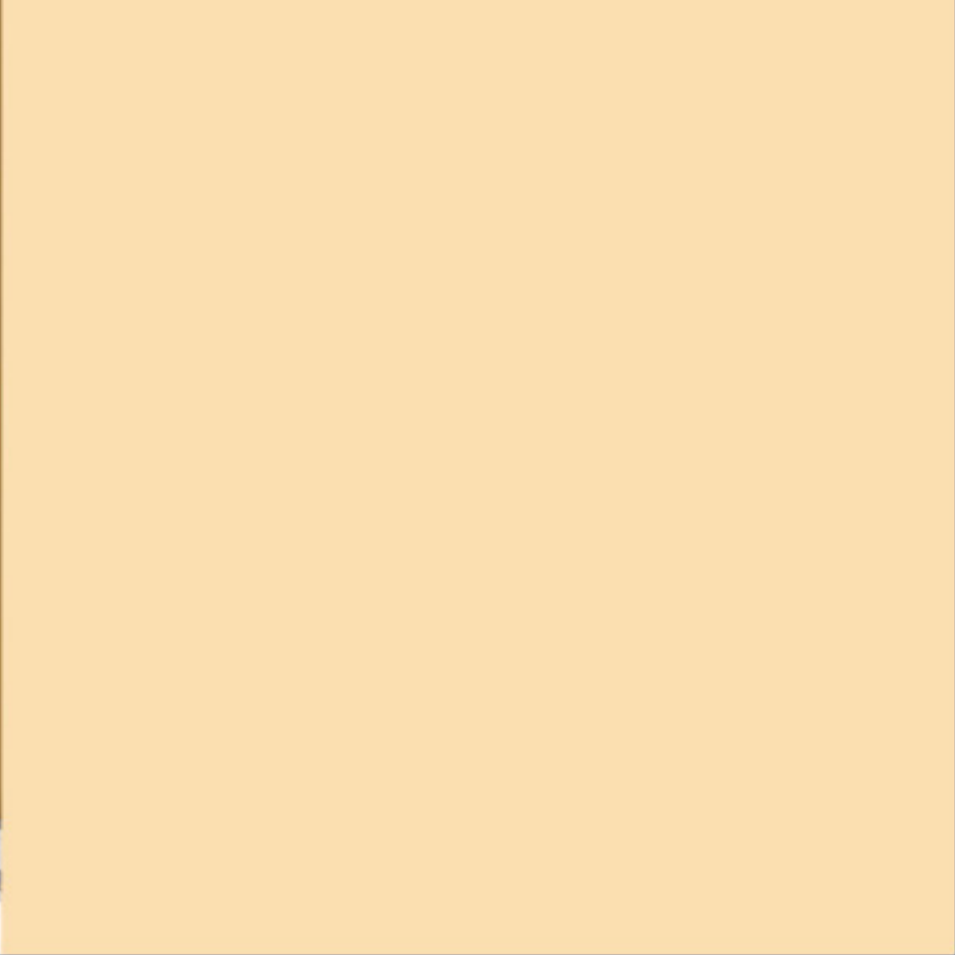
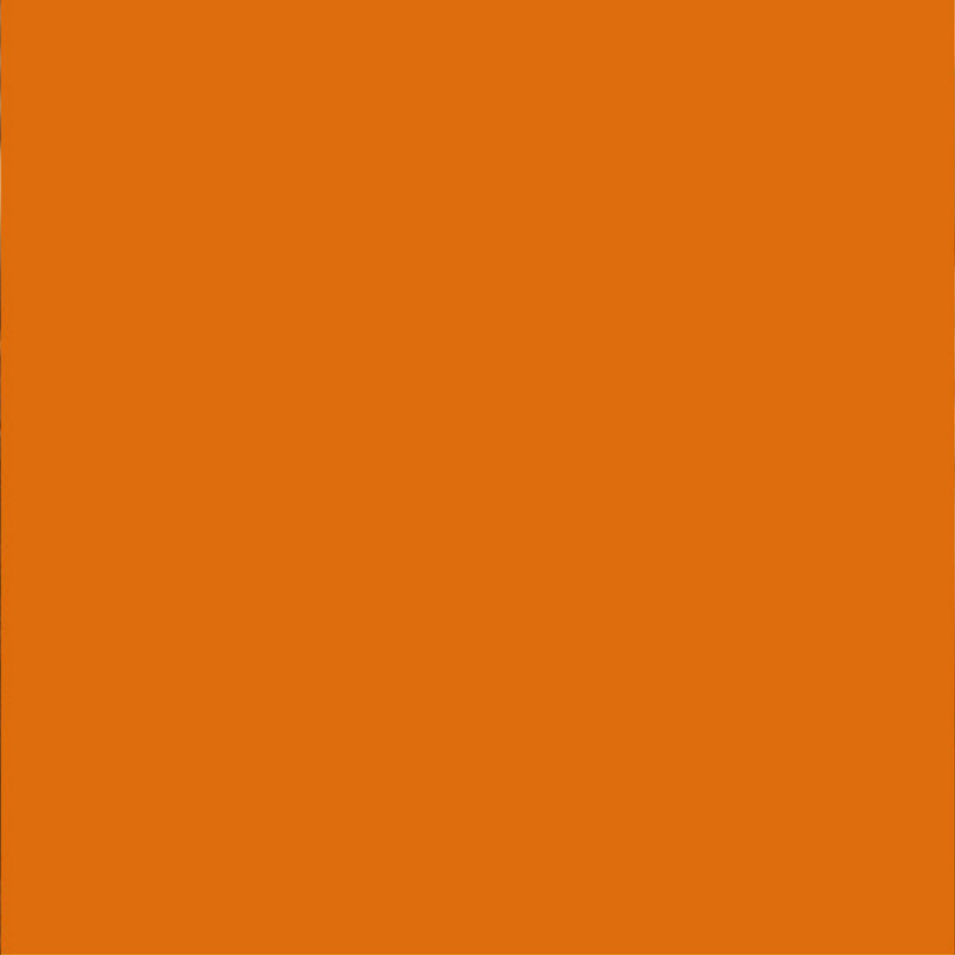




Beyond happiness

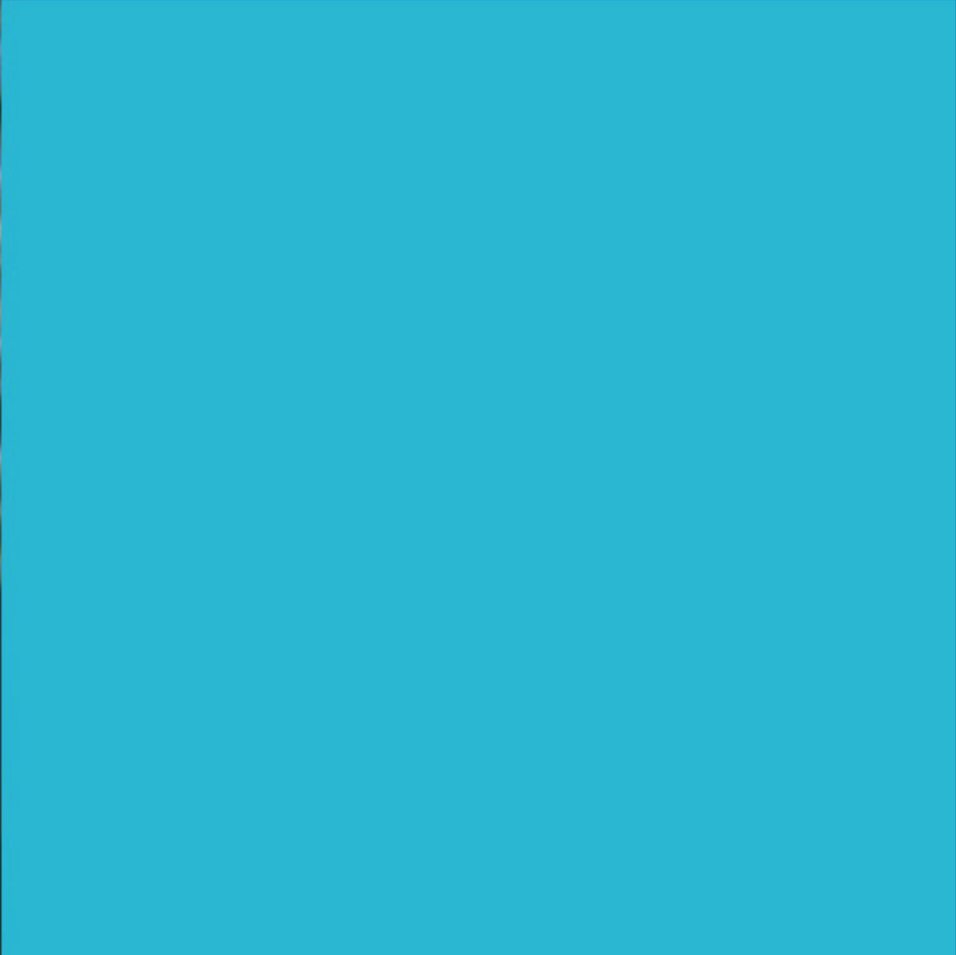
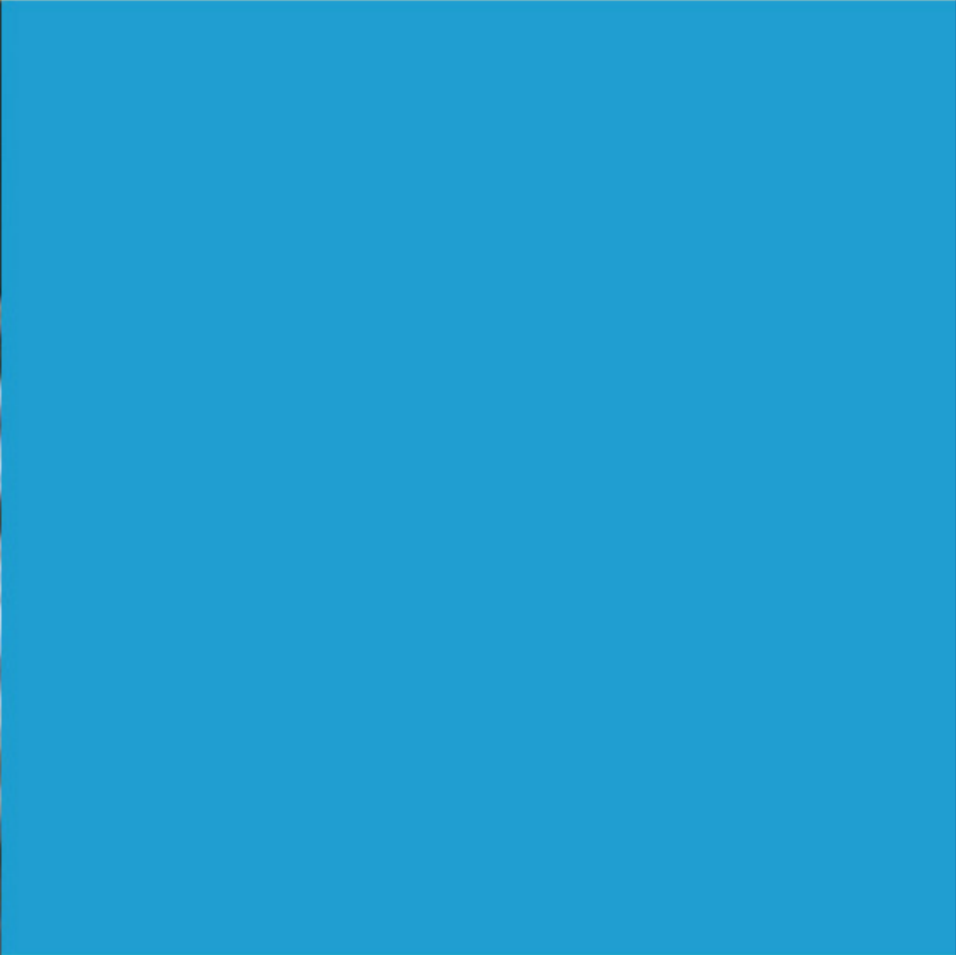
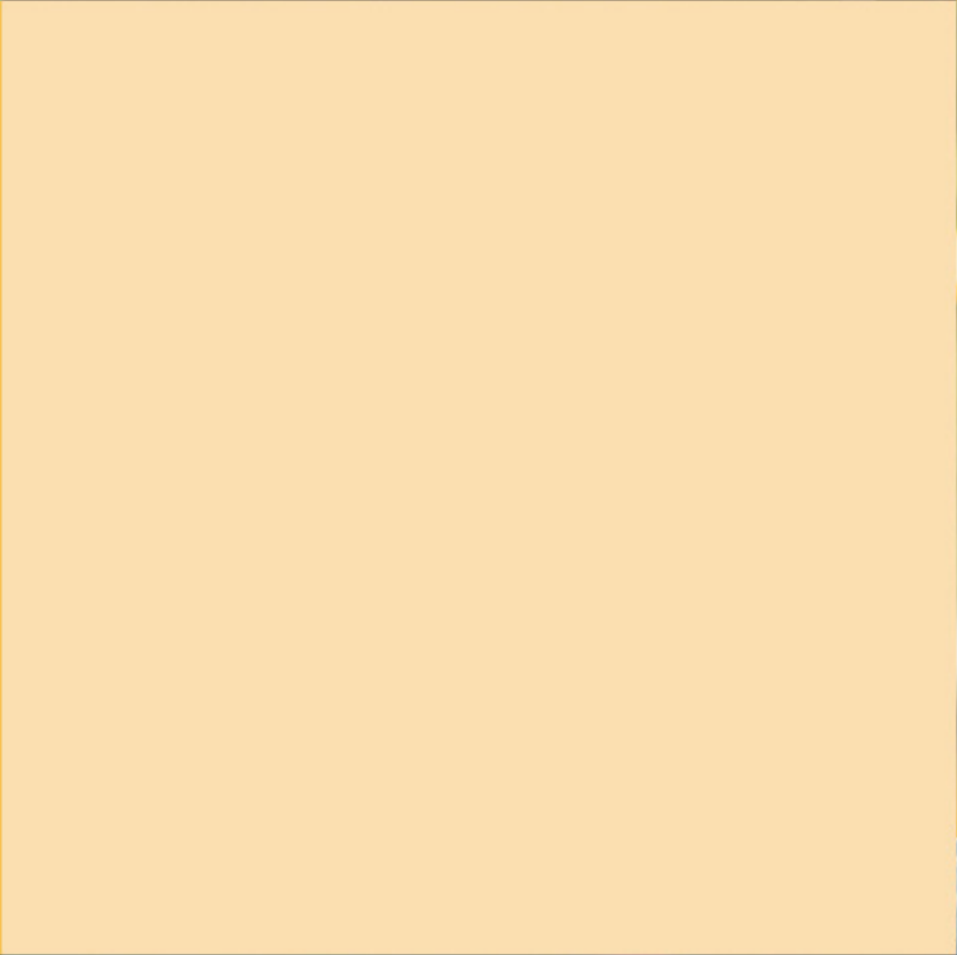
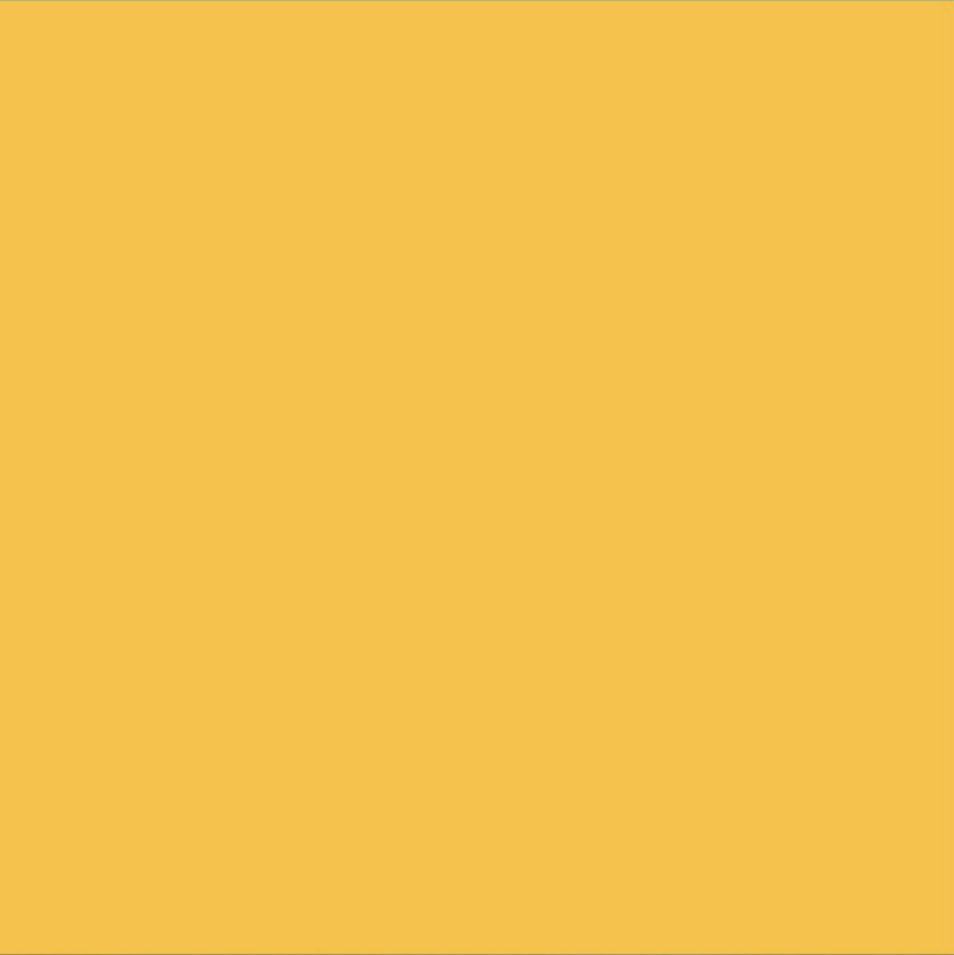
Crescent Zinnia is a premium apartment project in one of the fastest growing neighbourhoods of the city. A quality home that will reflect one's lifestyle and aspiration. Designed with a touch of class, the apartments will bring peace and comfort to the lives of its residents.

The finely detailed apartments will blend with the contemporary urban lifestyle while maintaining the tranquillity of a home. The proximity of the apartment complex to commercial and business centres makes it one of the most sought after spots in town.



For Your Satisfaction

- Swimming pool & party area at roof top
- Well equipped fitness centre
- Games room
- Landscaped area
- Children's play area
- Meeting room
- Backup generator for selected points inside the apartment
- One passenger lift and one service lift
- Cable TV connection in living room and master bedroom
- Intercom facility, concealed conduit wiring for telephones in living room, master bedroom and toilets
- CCTV surveillance
- 24x7 Security
- Sewage treatment system and rain water harvesting system
- Covered car parking facility at extra cost
- Water treatment system
- Solar powered common area lighting



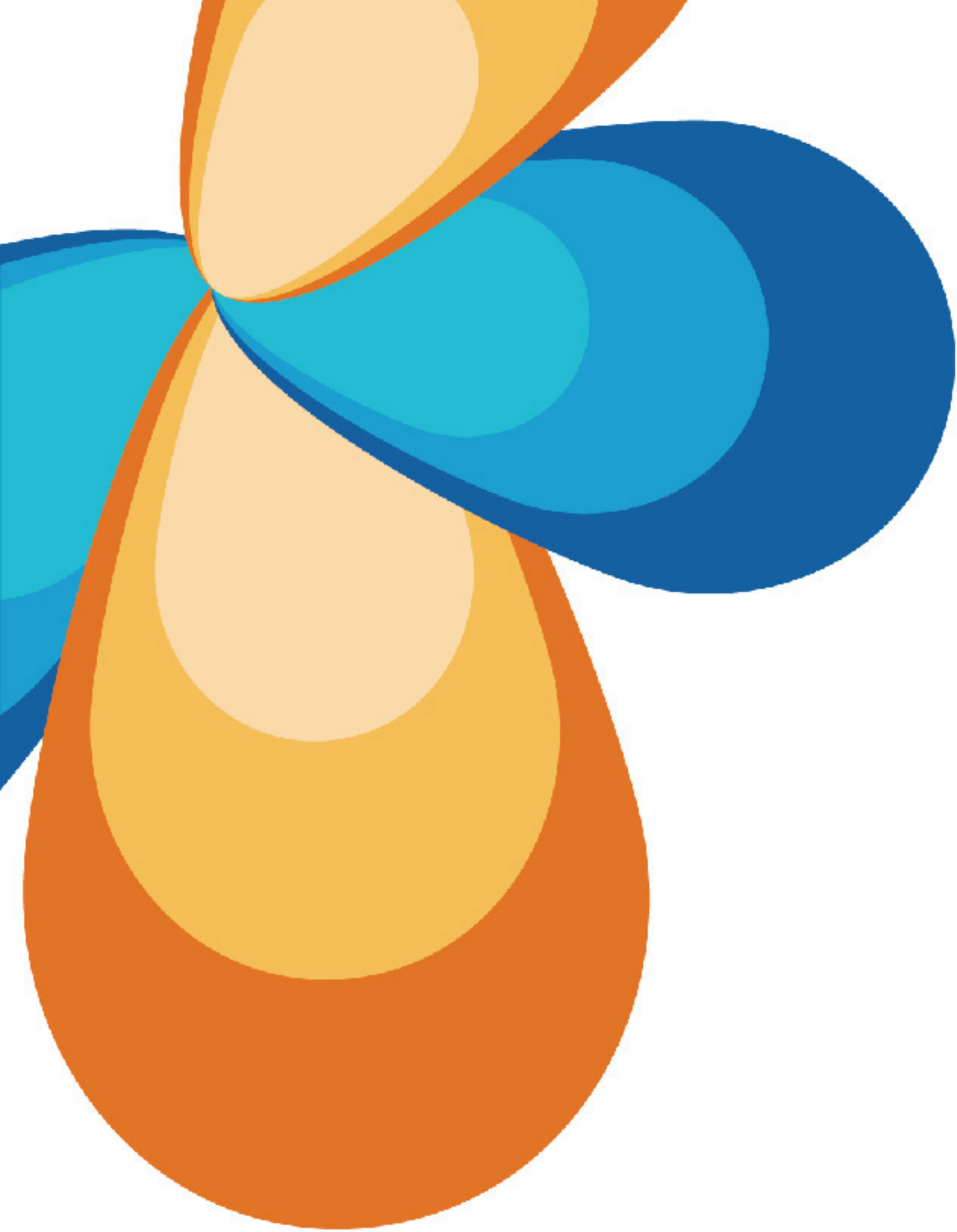
AMENITIES

Specifications

- All structural RCC works shall abide to the IS 456 standard and latest code
- All exterior walls are in laterite masonry/solid concrete block and interior walls in single brick masonry
- All cement mortar plastering in 1:3 or 1:5 as applicable
- Teak wood front door with view finder. Hardwood frames with paneled shutters for interior doors
- Sliding powder coated and fully glazed aluminum shutters with MS grill for windows
- Vitrified tiles for the entire apartment and rustic tiles for kitchen and balconies
- Concealed copper wiring and adequate light, fan and plug points, good quality modular switches, three-phase connection with independent KSEB meters
- Plastic emulsion over putty for interior walls, enamel paints for interior doors. Spray polish/touch wood for main door. Premium quality paint for exterior. Enamel paints for grills and handrails
- Glazed tile dado up to 60 cm height for kitchen and work area above counter level
- Provision for sink, dishwasher and washing machine in kitchen/work area
- Ceramic tile for the floor and glazed tiles up to 210 cm height in bathrooms, concealed pipe with white colored sanitary fittings. Premium quality c/p fitting with mixer for hot and cold water, soap dish, towel rod and provision for exhaust and geyser in toilets
- KWA water and well water through sump and overhead tank
- Granite/vitrified tile finished lobbies
- Fire fighting equipment as per KMBR and Kerala Fire Service Rules

* Specifications mentioned above are subject to change as may be required by the authorities.





PLAN BOOK ▶



SITE LAYOUT

* Dimensions mentioned above are subject to change as may be required by the authorities.





TYPICAL PLAN - FLOOR 1



TYPICAL PLAN - FLOOR 2



TYPICAL PLAN - FLOOR 3-7



TYPICAL PLAN - FLOOR 8





TYPICAL PLAN - FLOOR 9

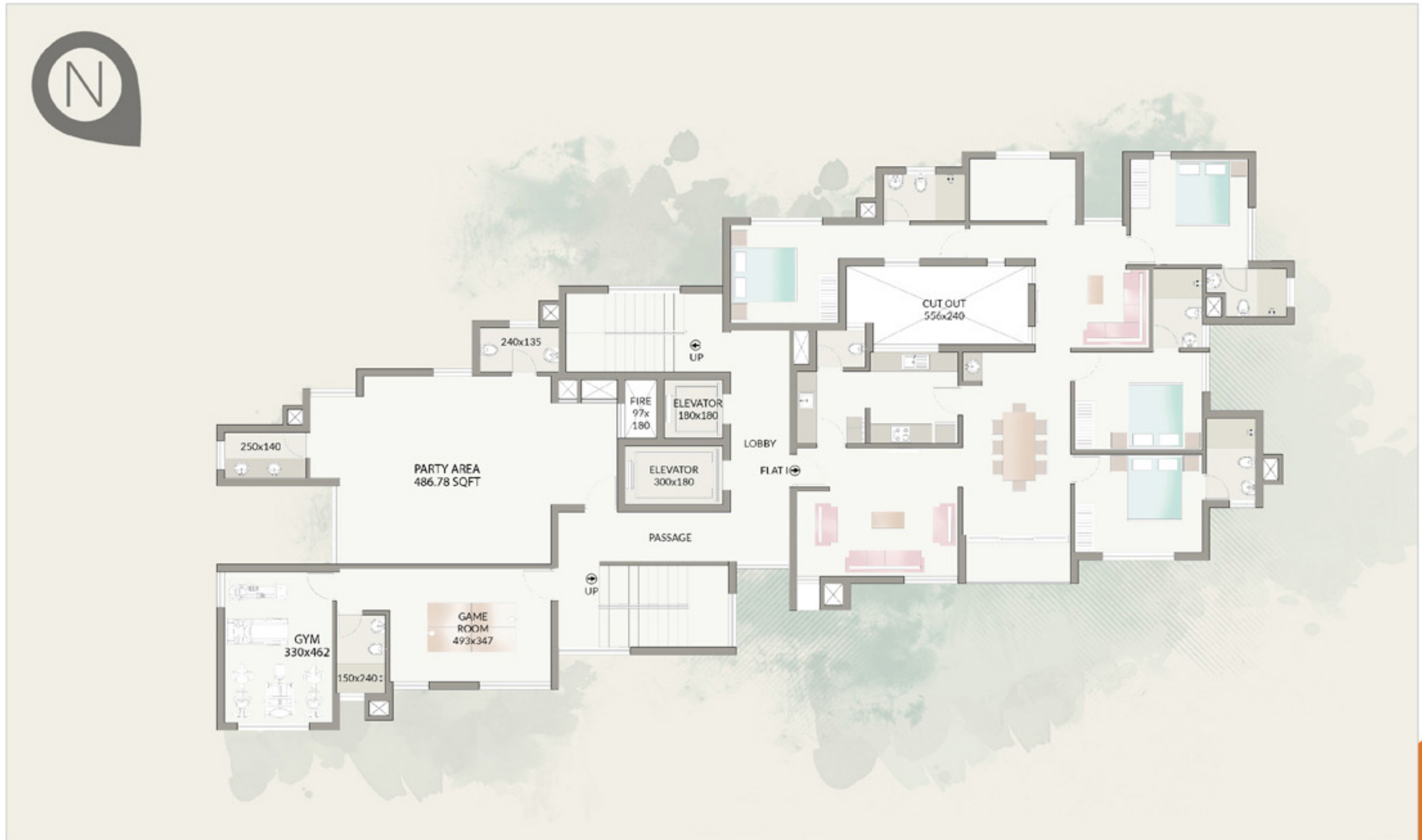


TYPICAL PLAN - FLOOR 10





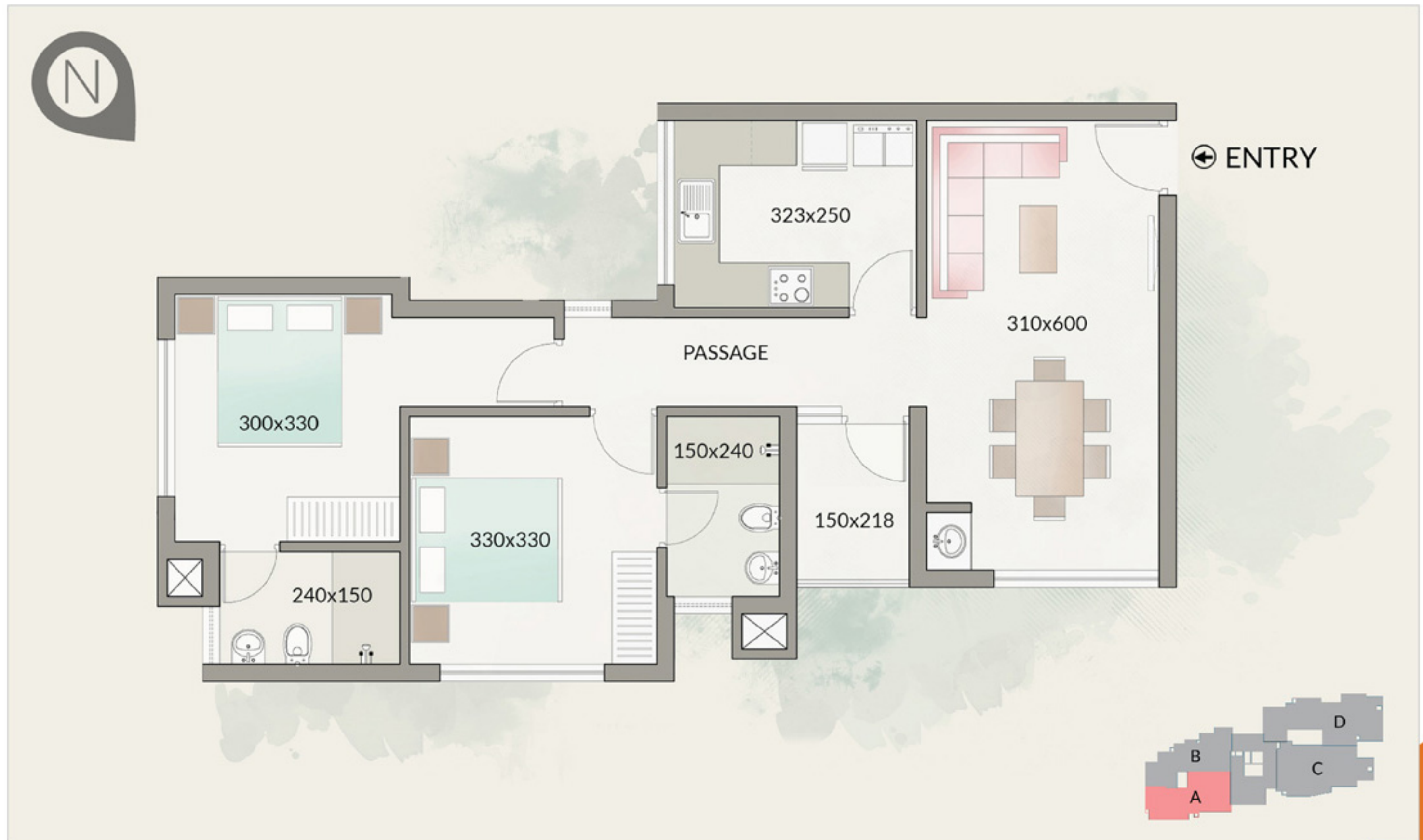
TYPICAL PLAN - FLOOR 11



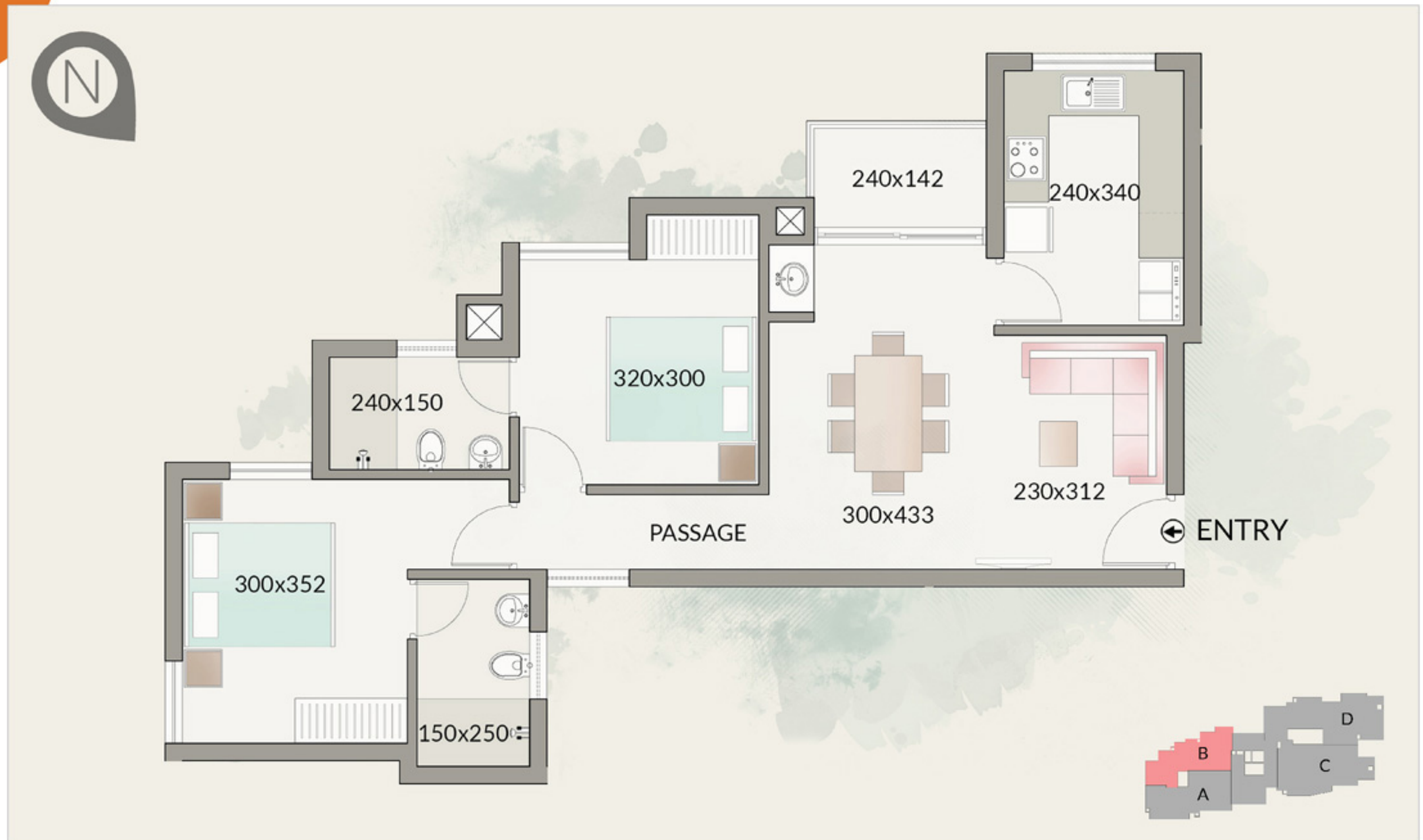
TYPICAL PLAN - FLOOR 12 (Part Recreation)



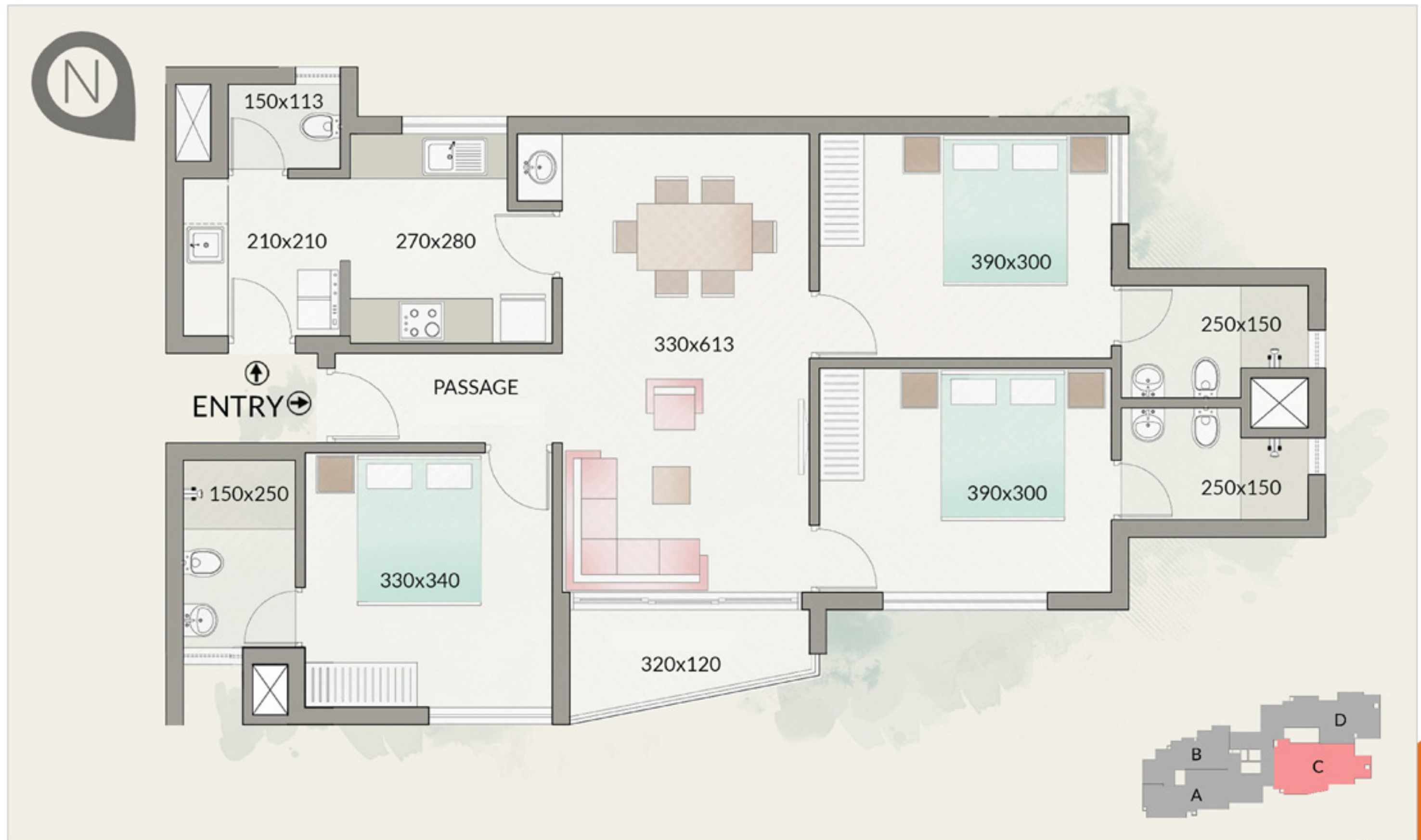
TYPICAL PLAN - FLOOR 13 (Rooftop Party Area, Swimming Pool)



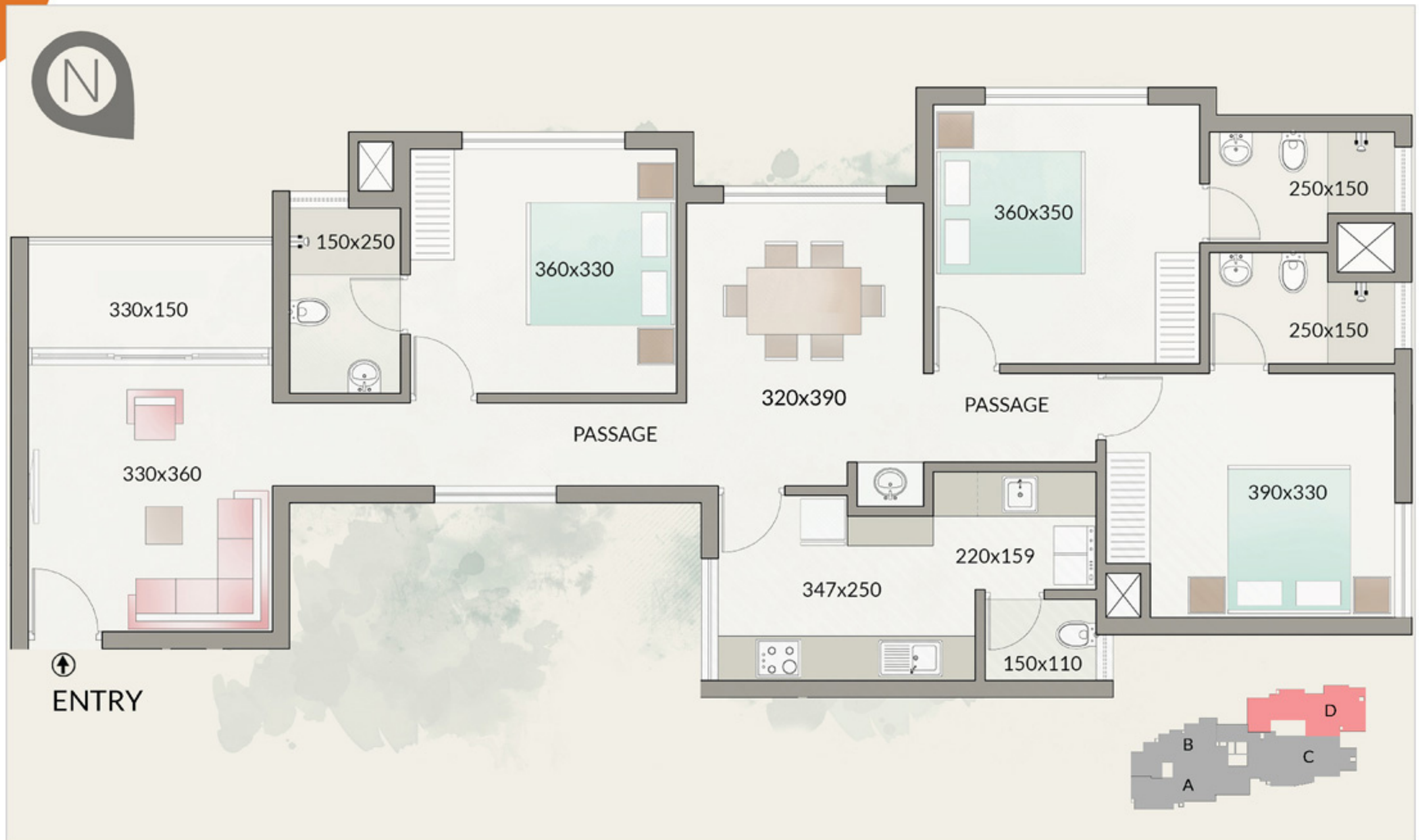
TYPE A | 1st - 7th FLOORS | 2 BHK : 1104 sq. ft.



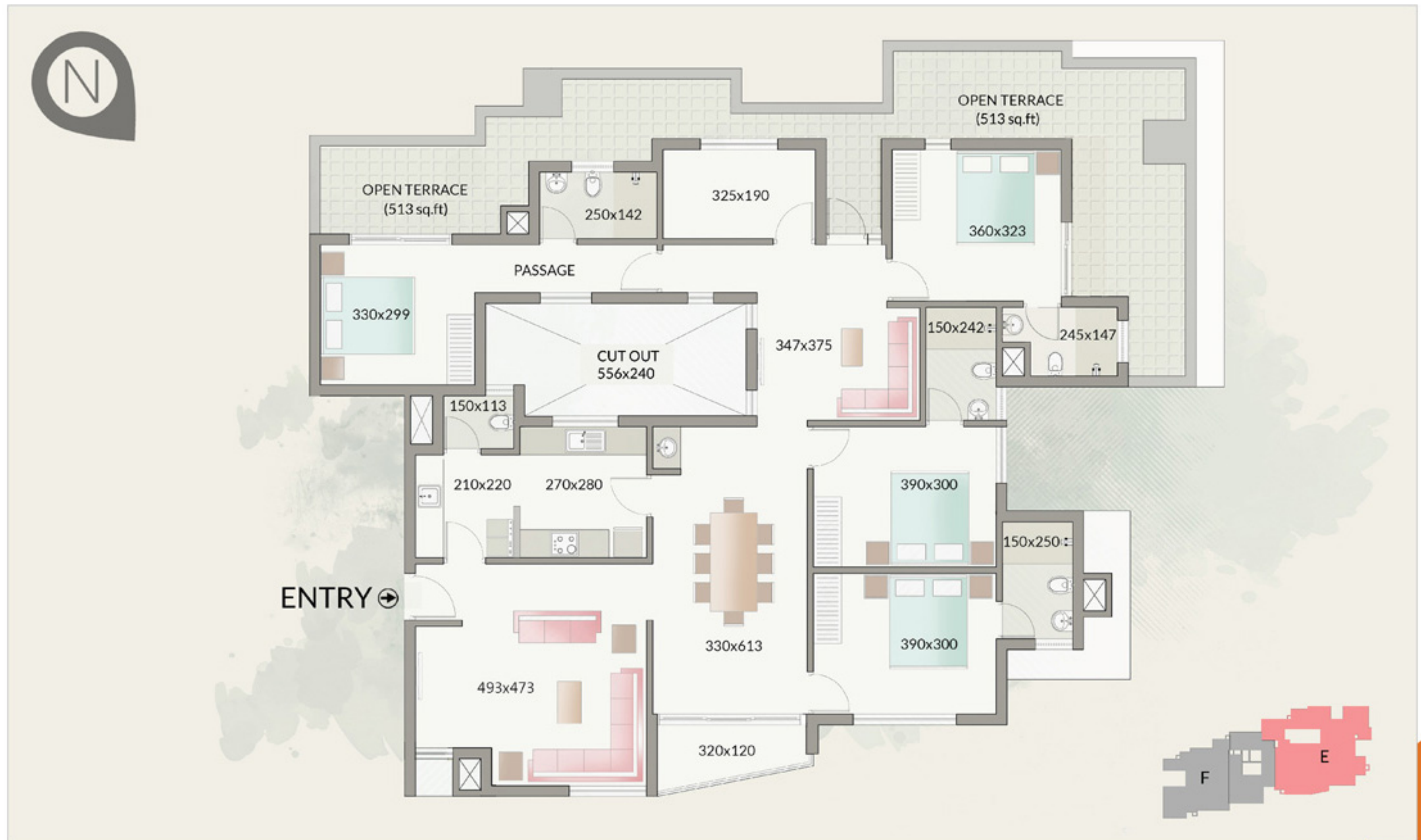
TYPE B | 1st - 7th FLOORS | 2 BHK : 1084 sq. ft.



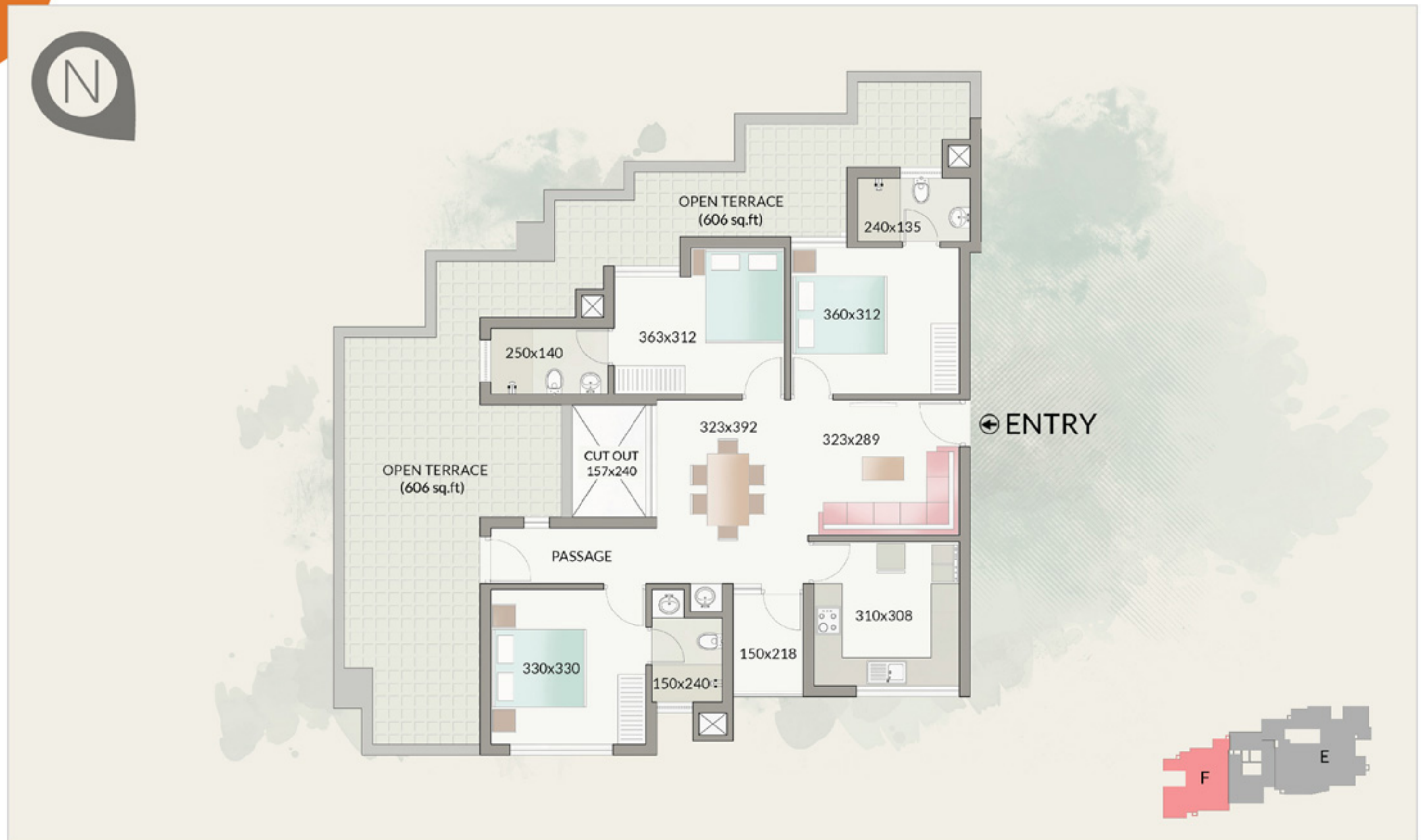
TYPE C | 3rd - 7th FLOORS | 3 BHK : 1480 sq.ft.



TYPE D | 3rd - 7th FLOORS | 3 BHK : 1655 sq.ft.



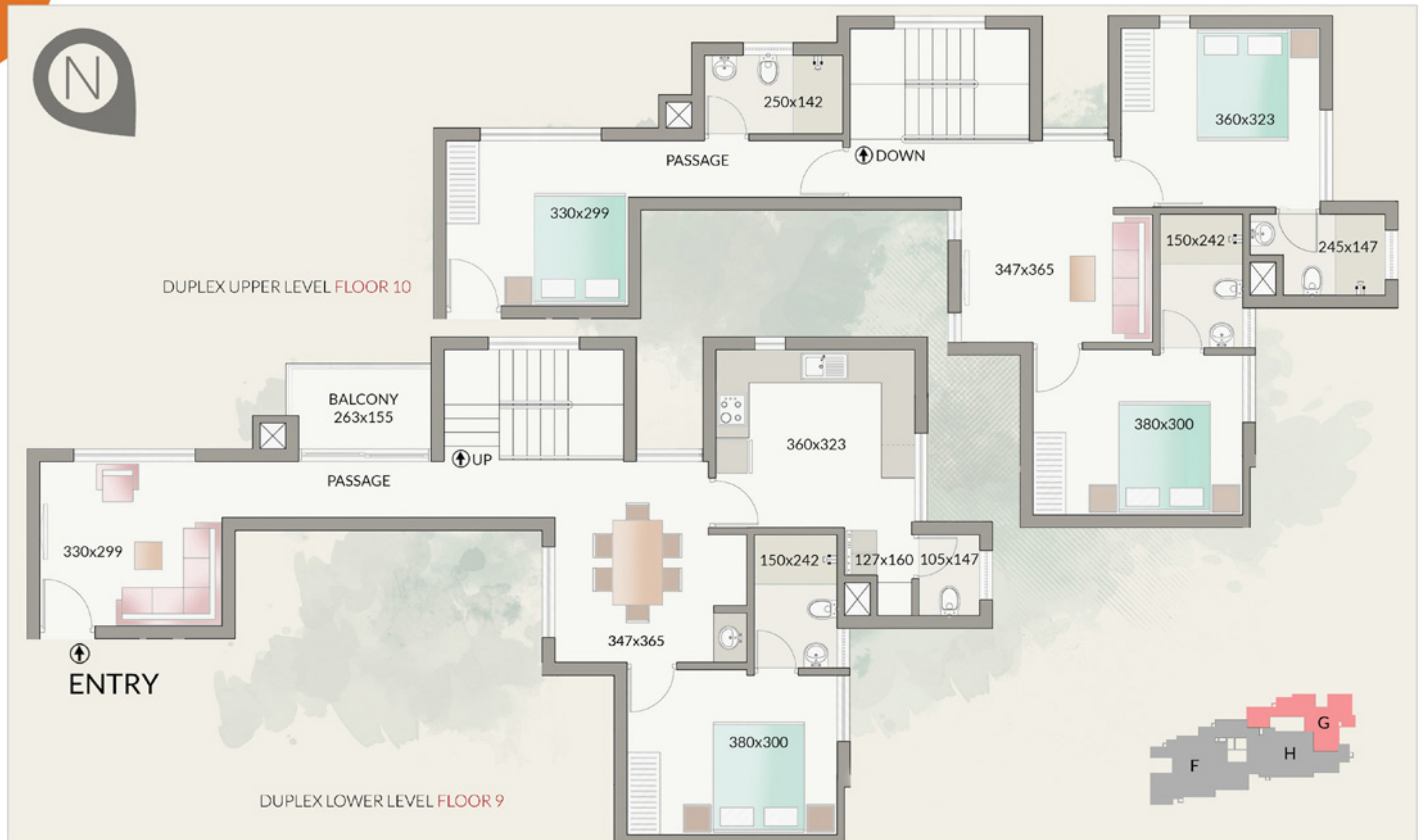
TYPE E | 8th FLOOR | 4 BHK : 2418 sq. ft. | OPEN TERRACE : 513 sq. ft.



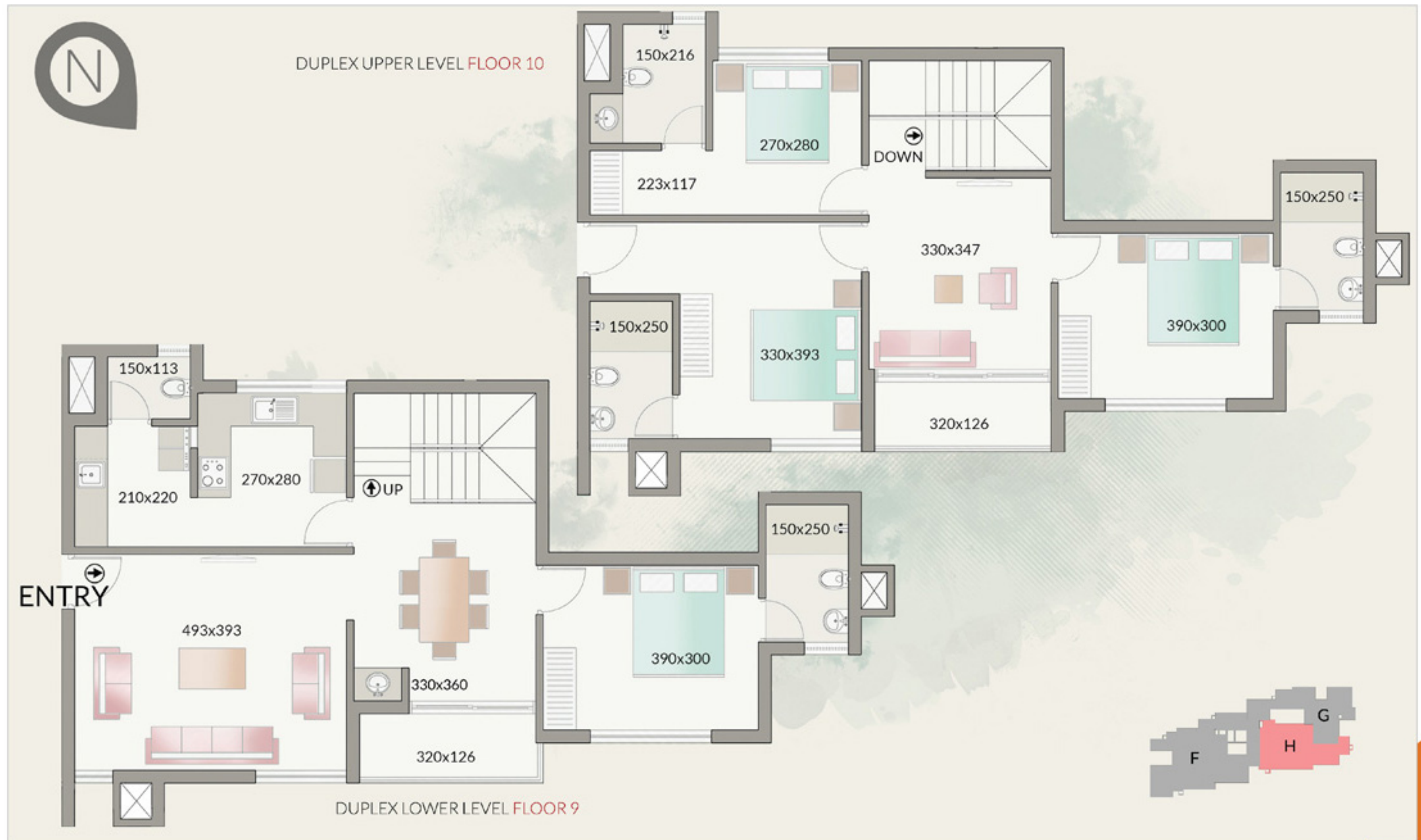
TYPE F | 8th FLOOR | 3 BHK : 1383 sq. ft. | OPEN TERRACE : 606 sq. ft.



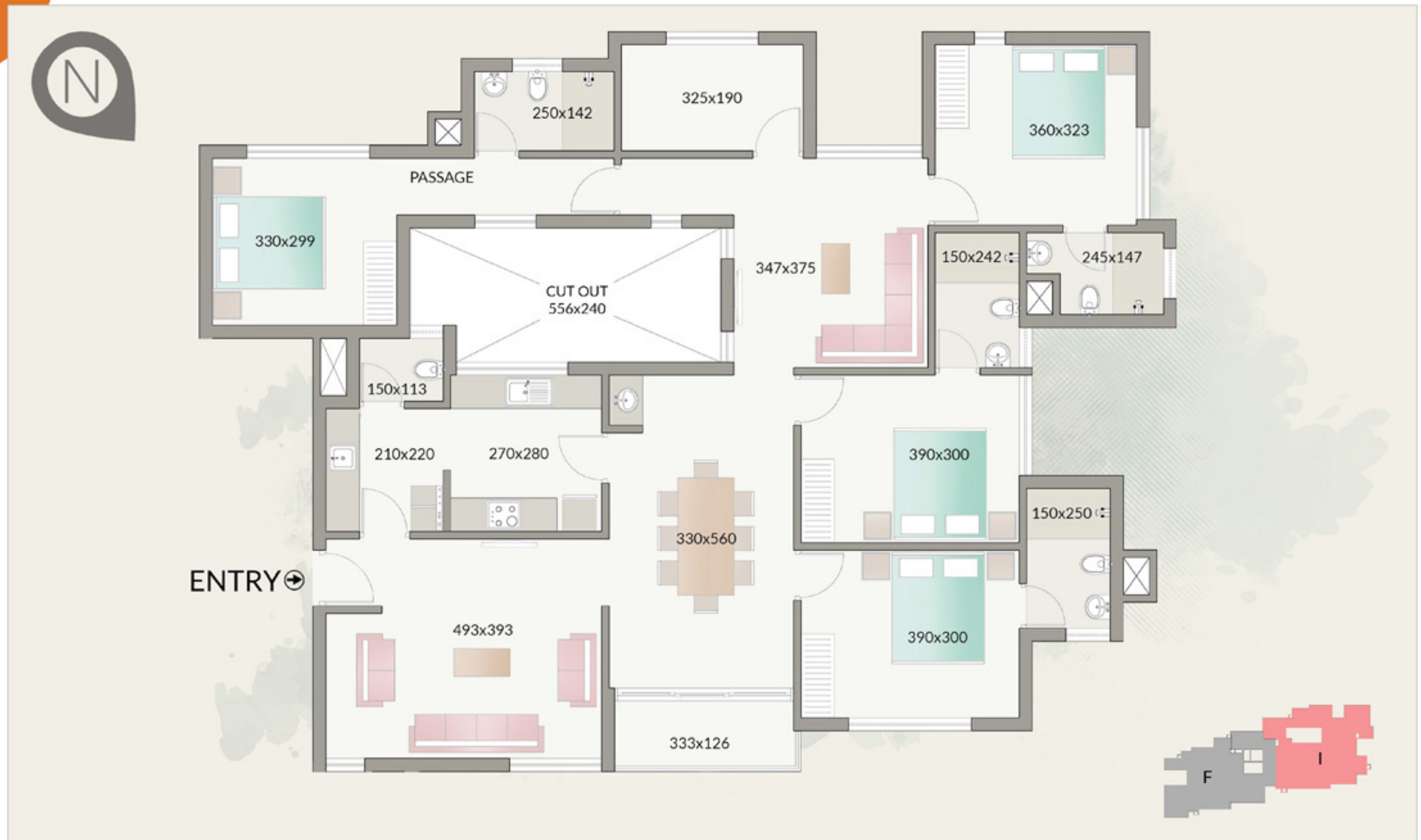
TYPE F | 9th - 11th FLOORS | 3 BHK : 1383 sq. ft.



TYPE G | 9th & 10th FLOORS | DUPLEX APARTMENT | 4 BHK : 2332 sq. ft.

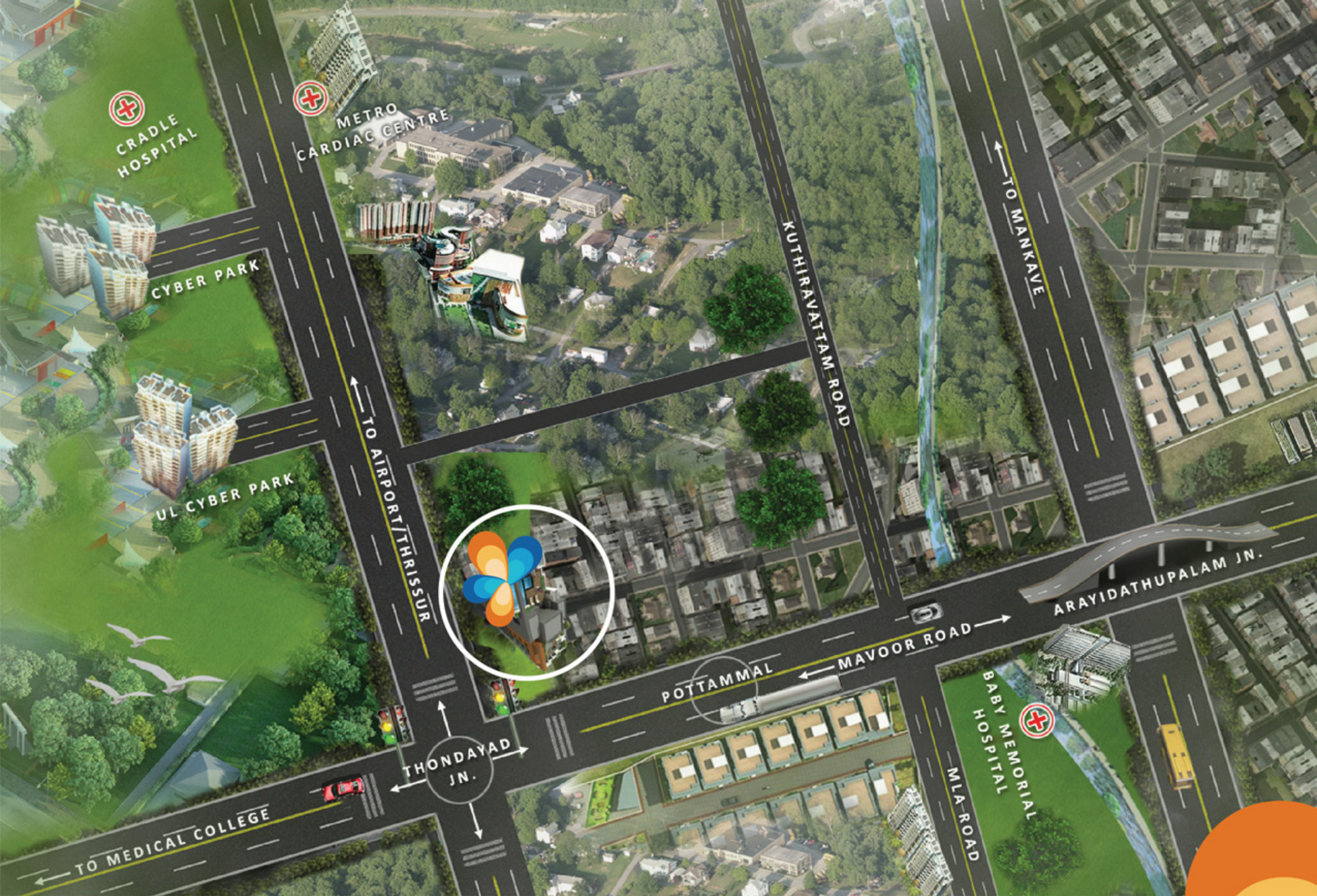


TYPE H | 9th & 10th FLOORS | DUPLEX APARTMENT | 4 BHK : 2362 sq. ft.



TYPE I | 11th & 12th FLOORS | 4 BHK : 2349 sq. ft.

* Dimensions mentioned above are subject to change as may be required by the authorities.



LOCATION MAP

Most Preferred Home Makers Of Calicut



Crescent Mervue



Crescent Mansion



Crescent Orchid



Crescent Mayflower



Crescent Mansa



Crescent Kings Spear



Crescent Vathiad



Crescent Court



Crescent Iris



Crescent Aster



Platinum Crescent



Crescent Tulip



paarva.com

