

Specifications:

- * Structure - Earthquake resistant RCC framed.
- * Brick work - AAC blocks with plastering.
- * Doors - Good quality wood frames with decorative doors.
- * Windows - Upvc windows.
- * Flooring - Vitrified tiles.
- * Sanitary - Branded fittings.
- * Electrical - Branded wires and fixtures.
- * Painting - Wall care putty with emulsion finish.
- * Kitchen - Steel sink with dado.
- * Elevator - 6 passenger.
- * Security - Intercom facility.

Note: This brochure is only conceptual presentation, not a legal offering.

FEATURES:

- # RO Water system
- # AC Gym room
- # Mosquito meshed
- # Intercom facility
- # Power Backup
- # Greenery with sit-outs
- # Water harvesting

iCon ASR

PROJECTS

innovative Constructions

opp Andhra bank, Manikonda,
Hyderabad, Telangana - 500 089

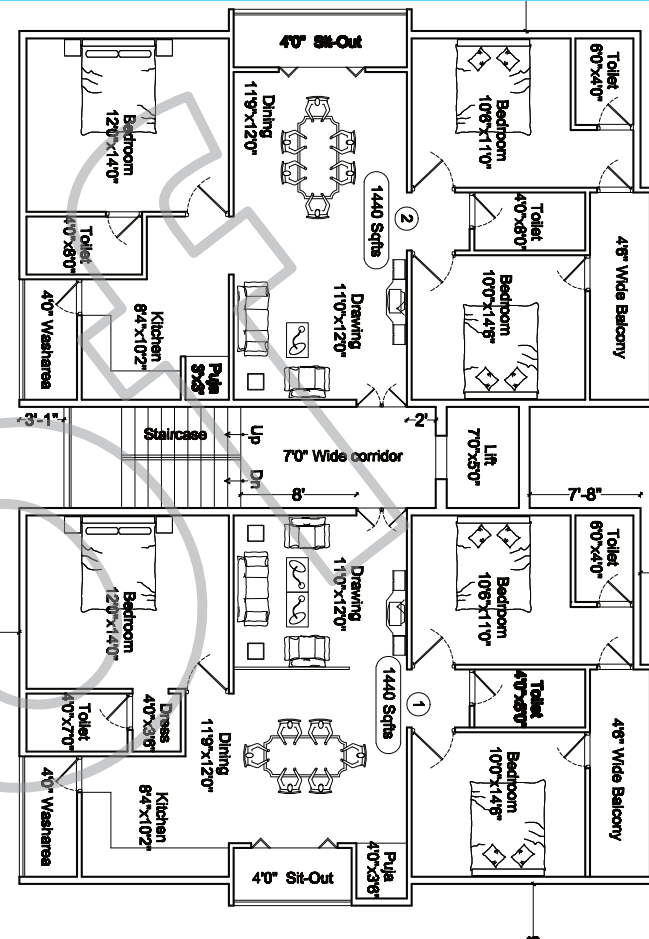
Website: www.asrprojects.in
Email: asrprojects.in@gmail.com

Call: 77 99 77 2727

Mapple Creek



Mapple Creek



Distances:

Lanco hills - 2 kms

Delhi public school - 3 kms

Outer ring road - 3 kms

Financial dist. - 5 kms

Hitech city - 8 kms

Gachibowli - 8 kms

Mehadipatnam - 9 kms

Our Previous Projects:

