



---

BCC  
*Blue*  
*Mountain*

BCC  
*Blue*  
*Mountain*



## About Us -

**Shri Balaji Construction Company**, a company in construction business since last ten years . Engineering numbers of projects in a very short tenure, in Lucknow.

**BCC** serves both public and private sector clients and is comprised of many well-coordinated, highly professional teams located across the Lucknow. We are best known for infrastructure projects including residential flats , plots , villas and commercial office spaces.

**BCC** is equally effective at building both large and small jobs through its two operating divisions from small site developments to massive projects. **BCC** holds a wide range of properties with most prime locations in Lucknow.

**BCC** not only holds a massive responsibility of customer trust and satisfaction but also has the ability to serve them at its best.





BCC  
*Blue*  
*Mountain*

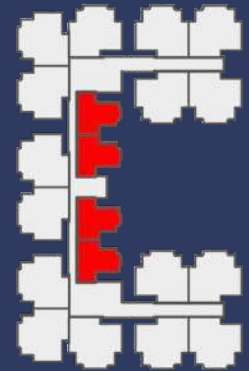




1. ENTRY
2. RAMP IN
3. DROP OFF
4. PARKING
5. INTERNAL ROAD
6. GREEN/LANDSCAPE
7. RAMP OUT
8. MANDIR
9. EXIT
10. SWIMMING POOL
11. DECK
12. SPORT FACILITY
13. LANDSCAPE



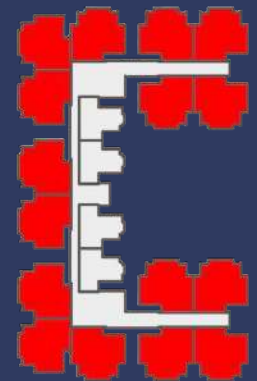
ENTRY



UNITS TYPE 2BHK

1100 sq.ft.





**UNITS TYPE 3BHK**  
**1800 sq. ft.**



Our Open Air Swimming Pool is one of our finest treasures for those who love swimming. Our Pools are equipped with a modern filtration process to make sure crystal clear water is made available to swimmers.

They remain open from morning to late evening, provide sport, exercise and relaxation par excellence.

There is also adequate seating area next to the pool where everybody can sit and enjoy snacks while others take a dive.





## Yoga/ Meditation Room

"Meditation" and "Yoga" are buzzwords these days for good reason.

Yogis have been practicing dhyana (meditation) for millennia.

Get expert insight here on meditation and its symbiotic relationship to yoga. Use our hub as your go-to resource for simple tips and guided practices to quiet your mind and make meditation part of your modern daily life.

BCC Blue Mountain provide suitable space and environment to strengthen your mind and soul by taking a dip in the ocean of Spirituality and peace.



## Departmental Store

BCC Blue Mountains offers you a great space for departmental store, containing all the products of your daily use, offered by Top Brands across the world. It allow you a comfortable living and easy access to your daily need.



## FITNESS CLUB

Fitness Club or Gymnasium at BCC Blue Mountain is equipped with all the modern machineries and resources. Gyms are popular as a social setting to meet people with a common interest in physical self-improvement. These facilities are more used for physical education, intramural sports, and social gatherings.

Therefore, BCC Blue Mountain offers you a collection of all the facilities and amenities that are important to build up your health and social livelihood.



## Lush Green Parks

It's fabulous sunny weather and you wish to relax and take a bath in beautiful yellow light under the clean blue sky, with green color and beautiful flowers around you.

Not to worry, just grab a snack from the shop and a cool bottle of drink and head to the park.

Whether you sit out in the sun at the park, lounge by the elaborate fountain or enjoy the great people

playing around, there are plenty of lovely green spaces in BCC Blue Mountain.

# BASIC AMENITIES :

- ◆ Life Time Free Campus Maintenance
- ◆ High Speed Automated Lift with Intercom
- ◆ Separate transform for society
- ◆ Modern and Effective Fire Fighting System
- ◆ Community hall for Parties and Celebrations
- ◆ Billiard room for Indoor Gaming
- ◆ Designed as per Vastu - Shastra
- ◆ Well Equipped Gymnasium
- ◆ Yoga/Meditation Room
- ◆ Departmental Store
- ◆ Rain Water Harvesting
- ◆ Beautiful pathway & Garden
- ◆ Lush Green Central Area
- ◆ Ample Parking Space and Visitor Parking
- ◆ Swimming Pool in Campus
- ◆ 24Hrs High-tech Security with Camera and Guards
- ◆ 24Hrs Filtered Water Supply
- ◆ 24Hrs Power Backup for Common Area
- ◆ Safe and Clean kids play area
- ◆ Impressive Entrance Lobby
- ◆ Earthquake Resistance



## **STANDARD SPECIFICATION:** **LIVING/DINING ROOM :**

**Flooring:-** Superior quality Vitrified tiles of well known brands like Sunhurt / Orient / Nitco / Kajaria or Any other equivalent brand.

**Walls :-** Plastic Emulsion paints.

**Ceiling:-** POP Punning with Plain ceiling and Molding with Cornish Design.

**Door / Windows** Designer door and Fittings of Dorian / Doormark / Century etc..

**External doors :-** Hardwood Frame 30mm Designer Door with Branded Locks of Godrej / Yale etc.

### **KITCHEN**

**Kitchen top:-** 2 Ft wide kitchen Top with Black Granite/Green Marble .

**Flooring:-** Made in India Verified Branded tile ( Sunhurt / Orient / Nitco / Kajaria / equivalent brand )

**Walls :-** Designer 12x18 Tiles.

**Ceiling:-** Plastic emulsion water proof paints which helps you keeping your kitchen clean and tidy.

**Door / Windows:-** Designer flush door ( Dorian / Doormark / Century or equivalent brand ) with hard wood frame, hardware and fittings from Dorma / Godrej or equivalent which is Long Lasting and makes you feel safe when you are home with your family.

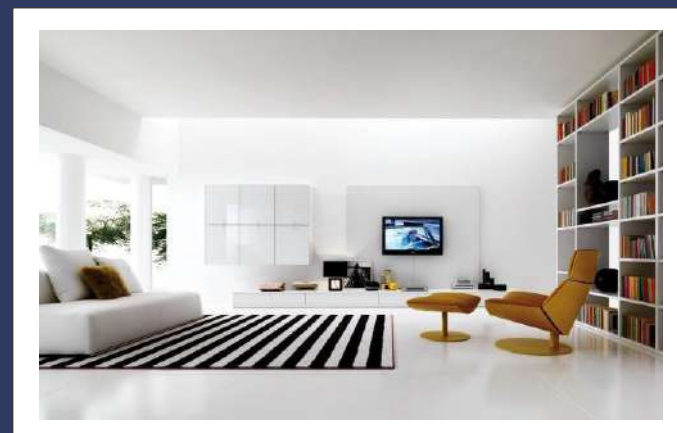
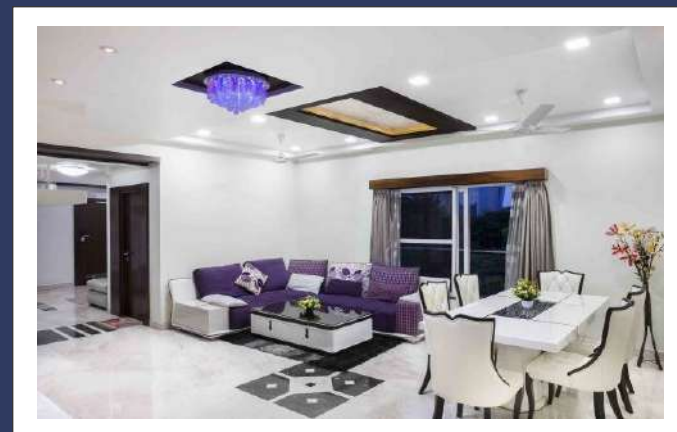
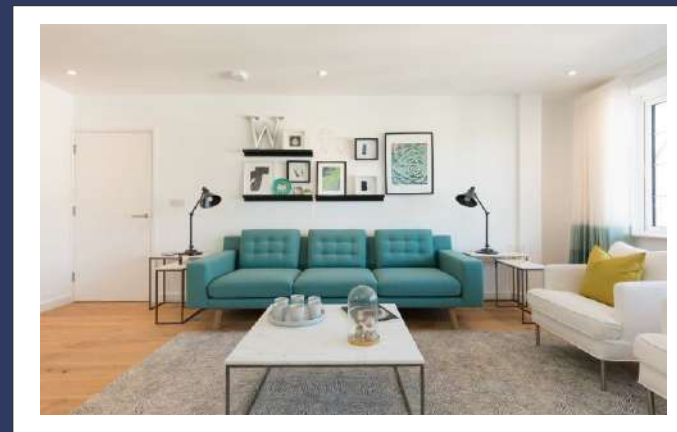
### **TOILETS**

**Flooring:-** Anti Skid Ceramic Flooring with proper slope for easy water flow which lets your surface dry and avoids wall damp .

**Ceiling:-** POP Clean Flat Punning / False-ceiling with 2x2 Water Proof Sheets for future Maintenance.

**Doors/Windows:-** Waterproof Designer Doors with both side design.

**Fiting & Fixtured/Equipments:-** All Branded fittings with upto 10 years of warranty by Jaquar / Somany / Cera / Grohe etc , All CPVC, PVC non-rustic internal fitting pipes of best quality which allows an easy and long-lasting flow of high temperature hot water , Brands Like Supreme / Raksha / Finolex etc



### **Specification Disclaimer**

The view shown are artist's impression only. These Elements may change without any prior notice.  
The furniture and pictures are not a part of standard specifications.  
The dimensions and areas shown are from block to block, without considering any plaster & finishing and any request for other assets will be chargeable.  
BCC reserves the right to change specifications without prior notice, in the interests of quality and timely delivery.  
We request our valuable customers to note that such changes made will not effect the quality of building material.



**Structure:** The structure of the building is embedded with the strongest mixture of concrete supported by Best Quality Iron Bars.

Each pillar or Beam is strong and tough enough to hold tons of weights which keeps you and your loved ones safe from any disaster.

**Electrical:** Best quality and thick wires are used that do not catch fire.

**Paints:** Asian and Dulux are the only brands used in painting, that is done by a team of trained and professional workers. Who know how to paint your life and home with beautiful colors.

**Lift:** Johnson/Mitsubishi/Onyx/Schneider etc, A well known brand is used for Lifts in the Building.

**Sanitary:** Ultramodern and Designer fittings and tiles used Bathroom of Brands like.

### **Vastu:**

**Vastu plays an important role in life. Vastu shastra may not be essential for living, but it is highly recommended for a better and healthier life. It is a proven and well-observed science which manipulates the forces of nature to work in favour of us.**

**Hereby, BCC follows the Ancient art or science given by the Vedic Gurus of India Known as Vastu Shastra. Not to be fake and describing 100% facts of construction, not all Vastu Rules are always followed but It can be said that BCC Follows or Tries hard to Follow most of the rules and Ideas of Vastu Shastra that makes your daily life relaxing and nourish your child for their best future.**

### **Earthquake Resistance:-**

**All the buildings Constructed by Shri Balaji Construction Company are Earthquake Resistant .**

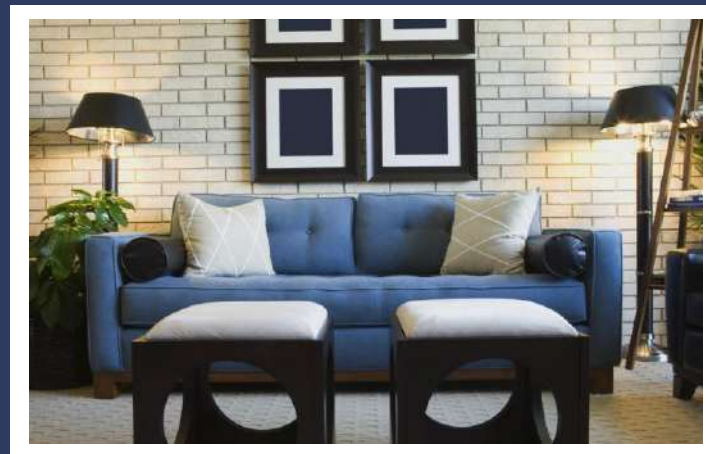
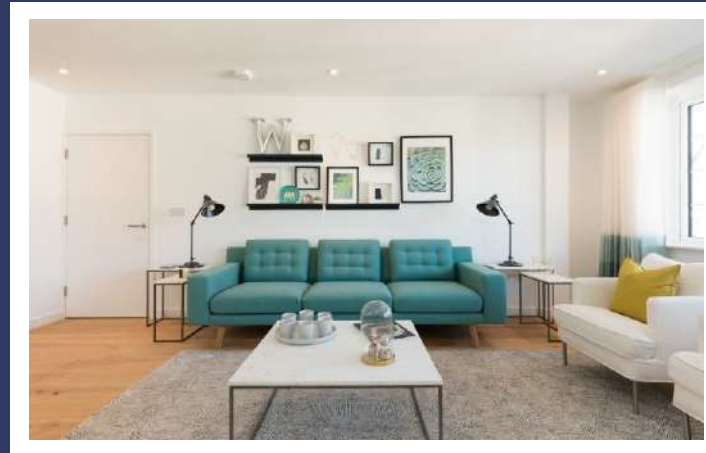
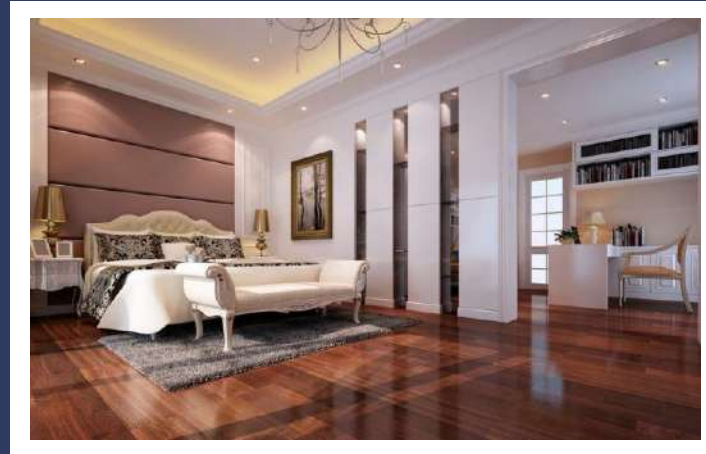
**The procedure that is used in a construction site to make a structure strong and Earthquake resistant comprises of many things such as Quality Material, Specific Measurement of Iron Bars, Specific Structural Designs made by a Qualified Engineer / Architect.**

**Most importantly the Structural Design made by the Architect has to be followed in that very same manner or pattern with all the shortest details and specifications.**

**Now this has been the biggest USP of the company , BCC follows a strict rule which says that any compromise in the quality of Any material is Strictly In-acceptable.**

**BCC strictly follows the procedure of Building up the structure of the Building according to the specifications of the Architect. All the minor details are followed in the same manner by**

**Highly Skilled and Trained Professionals who are certified by Indian Government and Educational Bodies.**





**Raibarely Road, Near PGI**



**Faizabad Road Near TOI**



**Gomti Nagar**



**Hazratganj**



**Arjunganj, Sultanpur Road**



**Moti Nagar, Aishbagh Road**



**Faizabad Road, Near Saraswati Dental College**



**Naubasta Kala , Chinhat**



**Sultanpur Road**



**Rajajipuram**



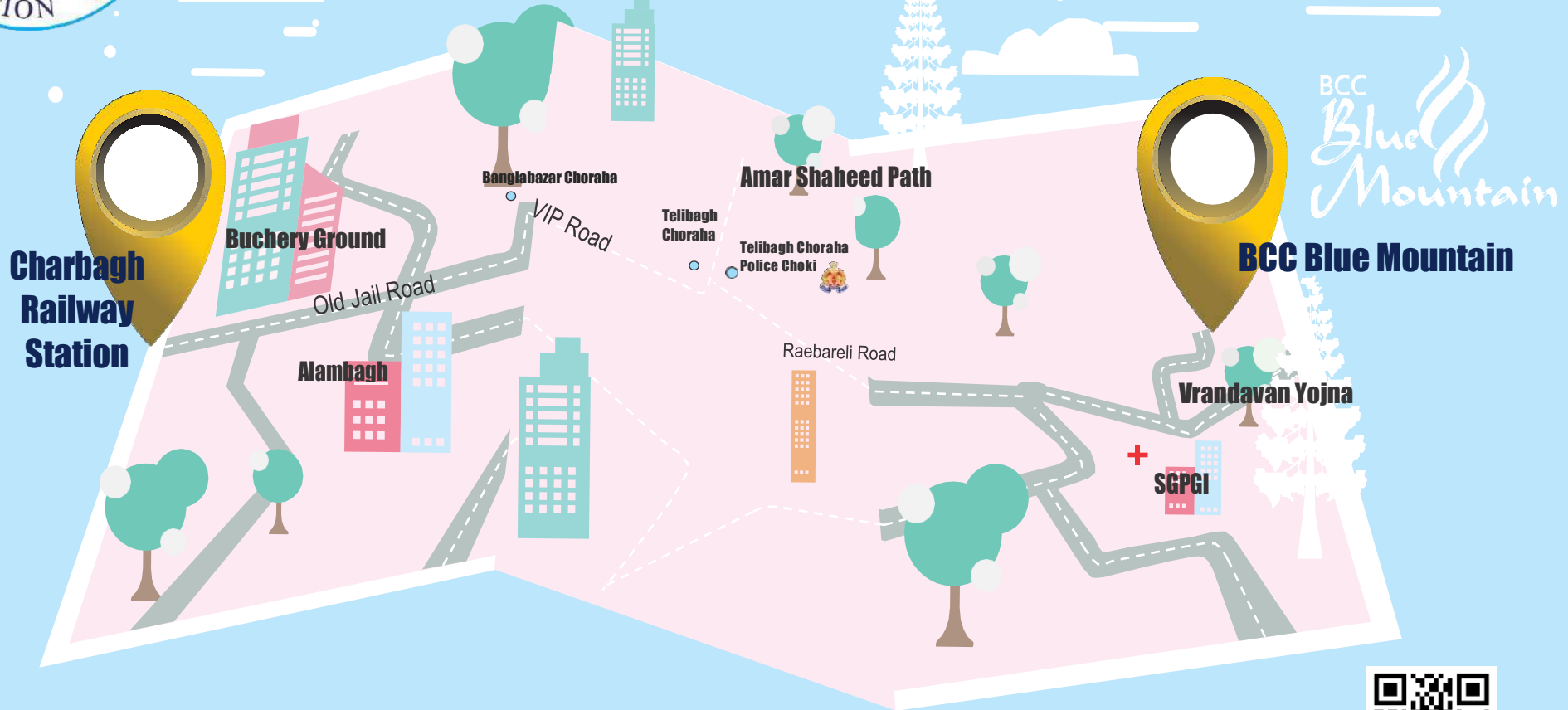
**Nishatganj**



**Main 6 Lane, Faizabad Road**



# BCC Blue Mountain LOCATION



Constructed & Marketed by :

## SHRI BALAJI CONSTRUCTION COMPANY

Corporate Add : 3rd Floor, Ganj Trade Centre, 10 Capper Road, Hazrat Ganj, Lucknow. (U.P.) INDIA



1800 3002 0200