



CORPORATE OFFICE
RidhiRaj Builders, 1st Floor, SLC Tower,
166, Amrapali Marg, Rathod Nagar,
Vaishali Nagar, Jaipur - 302021

📞 0141-2350377, +91 931488858 ✉ info@ridhirajbuilders.com

Follow Us     

ARCHITECT



GRAPHITE DESIGN STUDIO



THE PARK CENTRAL

your masterstroke

WHERE LIFE RISES ABOVE AFFLUENCE

View the world with a view of your own. The Park Central presents itself as a canvas only a masterstroke can fill. Because, the most significant spot of the city, The Central Park deserves it. And so do you!

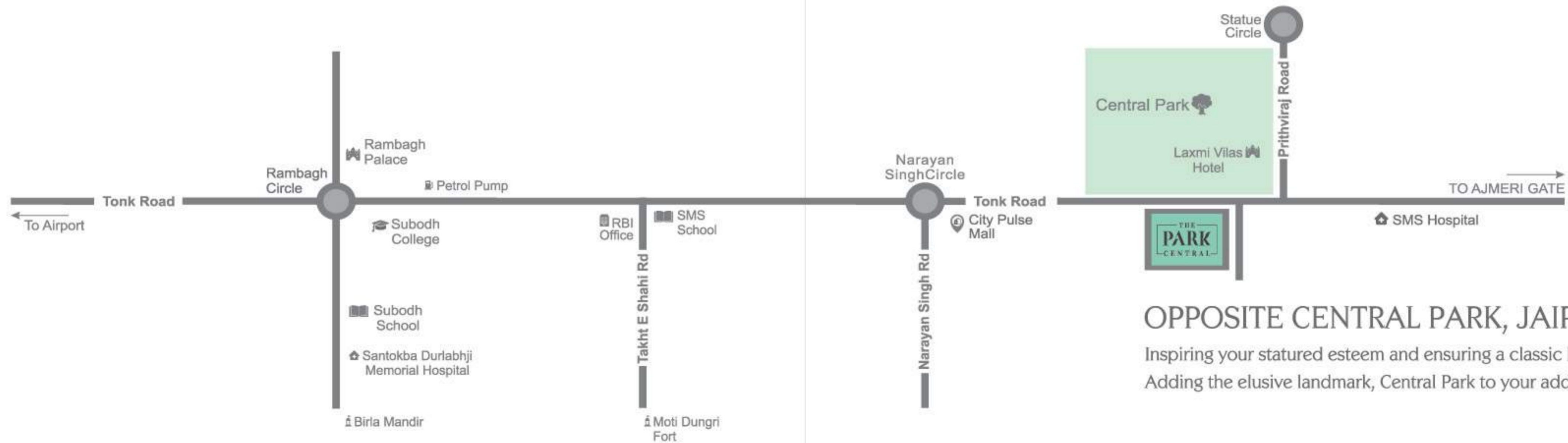


LIFE CENTERS AROUND YOU
AT THE PARK CENTRAL

Beyond targets and testimonies, life centers on you, purely to celebrate your enigma and emancipates itself to manifest its blissful state amidst the most prominent neighborhood of the city.



dream destination



OPPOSITE CENTRAL PARK, JAIPUR.

Inspiring your staturesd esteem and ensuring a classic lifestyle till eternity.
Adding the elusive landmark, Central Park to your address line.

Site Address: J-91, HEERA BAGH HEIGHTS, SAWAI RAM SINGH ROAD, OPP. CENTRAL PARK, TONK ROAD, JAIPUR.



THE PARK CENTRAL



THE PARK CENTRAL



glitzy

Lavishly enamored reception lobby that adds a glorious signature to your sense of style.

greetings





GLORY ROAD

Arrive in your own glorious style at the grand double basement and stilt parking, with ample space provision for ease of maneuverability. With the ease of pre-arranged operational support, you just have to handover the keys to the valet.



GUARDED HEAVEN

Unparalleled security and surveillance. Audio visual aide vigilantly ensuring you peace of mind.





OPULENCE PERSONIFIED

Magnificent and majestically appointed 3 BHK / 4 BHK & 6 BHK flats.

Pamper yourself with space befitting the bungalow lifestyle.



the clubhouses

- THE PARK CLUB
- THE TRINITY CLUB
- THE SKY CLUB

the park club



The Park Club is a daydreamer's paradise on the stilt floor. Swimming pool with ample shaded greenery along with Steam and Jacuzzi baths in an aromatically and visually refreshing environment present the perfect spot to get you, parked!

- Relaxing Swimming Pool
- Energizing Jacuzzi
- Stimulating Steam



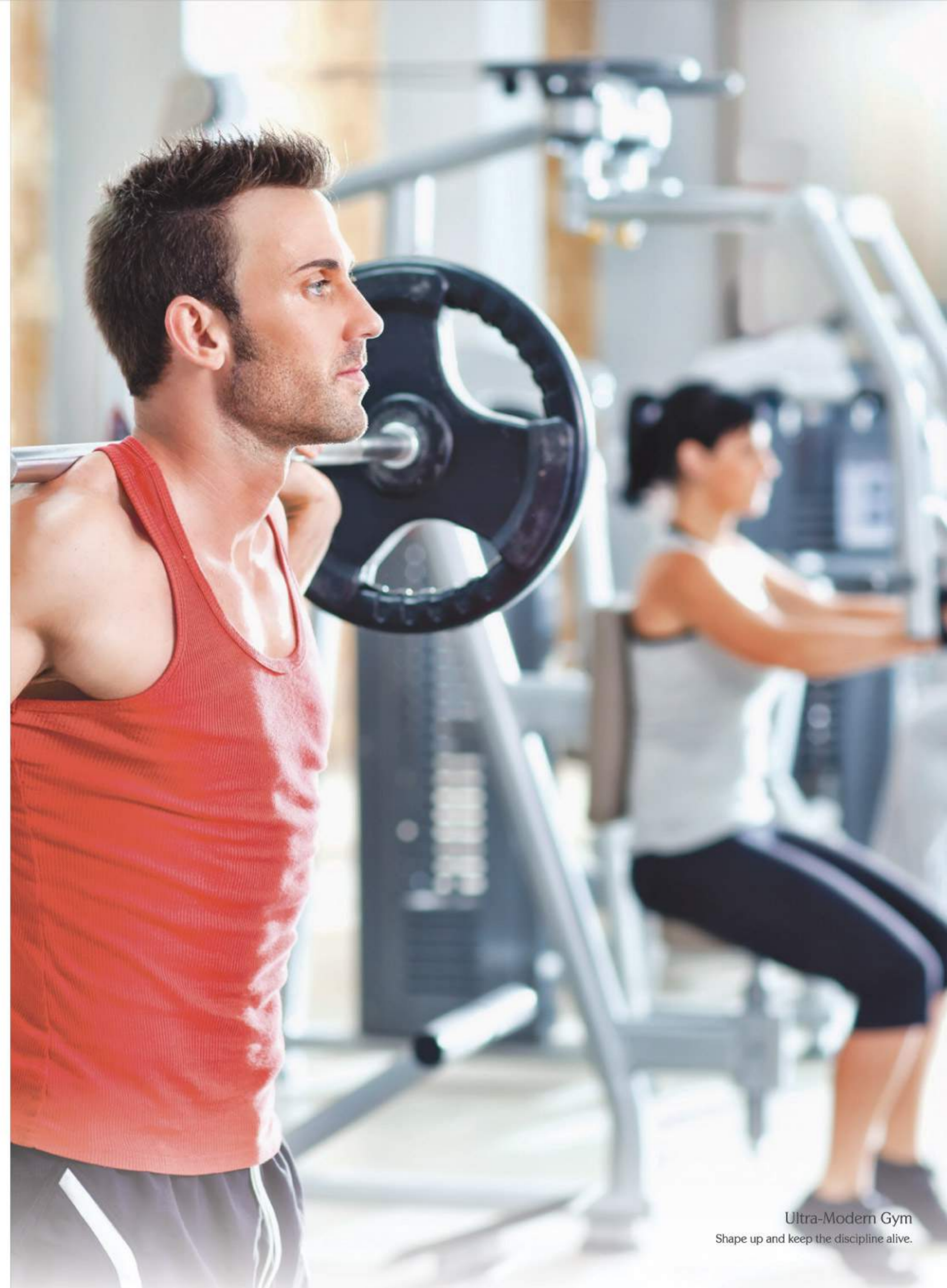
the
PARKCLUB



“THE TRINITY CLUB”

Take the morning in your strides and pump it up or let your spirit loose as the evening arrives. The Trinity Club on the first floor gets you active and energized and lets you seek unhindered, entertaining fun.

The stimulants you regularly chase to keep your 'self' positive form the trinity of experiences here – Fitness, Recreation and Social Leisure.



Ultra-Modern Gym
Shape up and keep the discipline alive.

Guest Room

Embrace the presence of your acquaintances.



Games Arena

Giving you, recreational salvation.



Party Hall

Celebrate moments and days, share occasions and festivals for social celebrations.



Movie Theater

Watch your favorite cinema or plan your own film festival.



“THE SKY CLUB”

At The Sky Club, on the roof-top, it's all about gleaming with energy and giving your soul a taste of true life.

Focused on rejuvenating your soul through the source of your passion, The Sky Club elevates your tastes in life. Your love for gourmet delights, pleasant chit-chats with companions and fragrant moments of pure blissful relaxation find perfect gratification here.

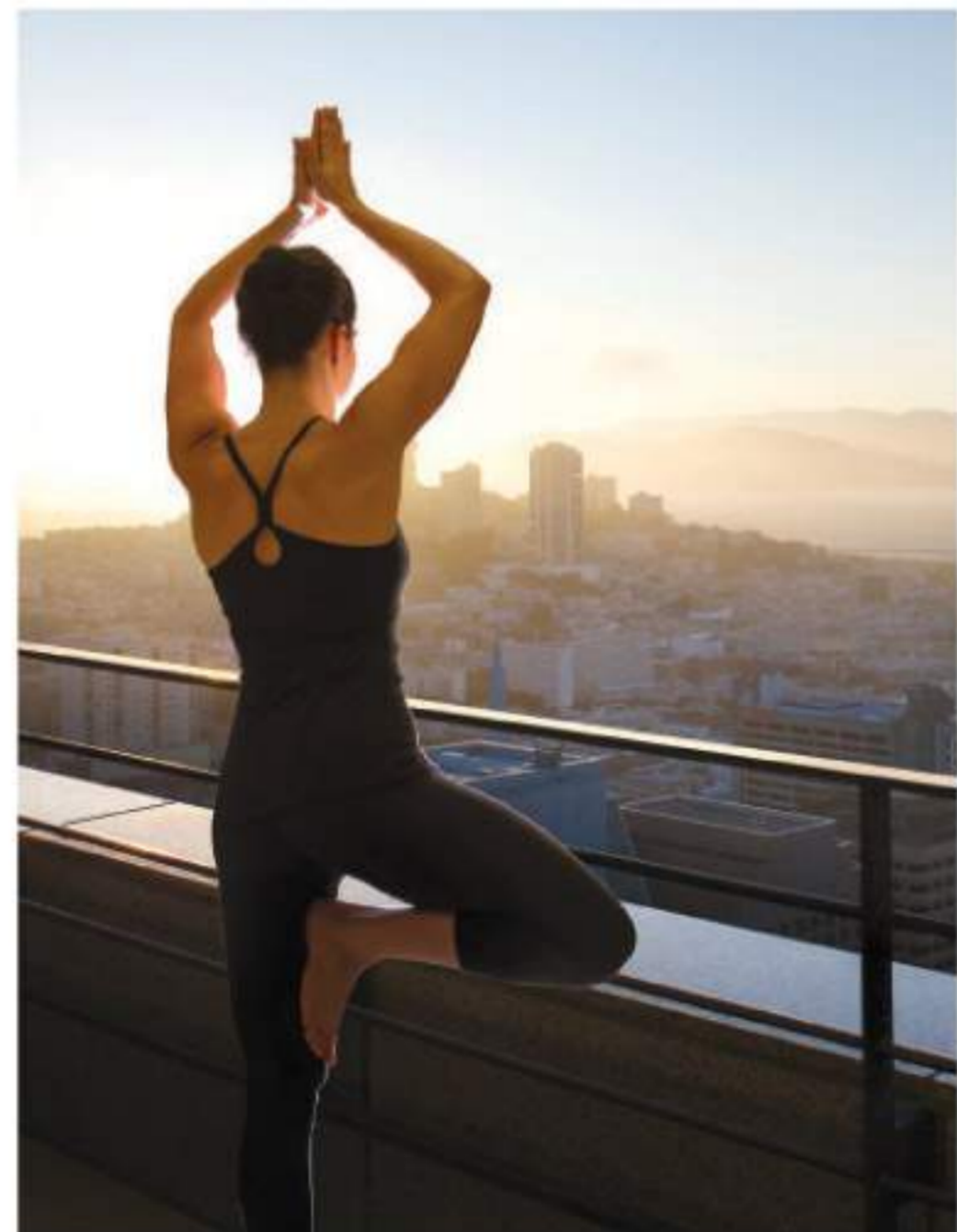


Golf Putting
Your birdie of class.

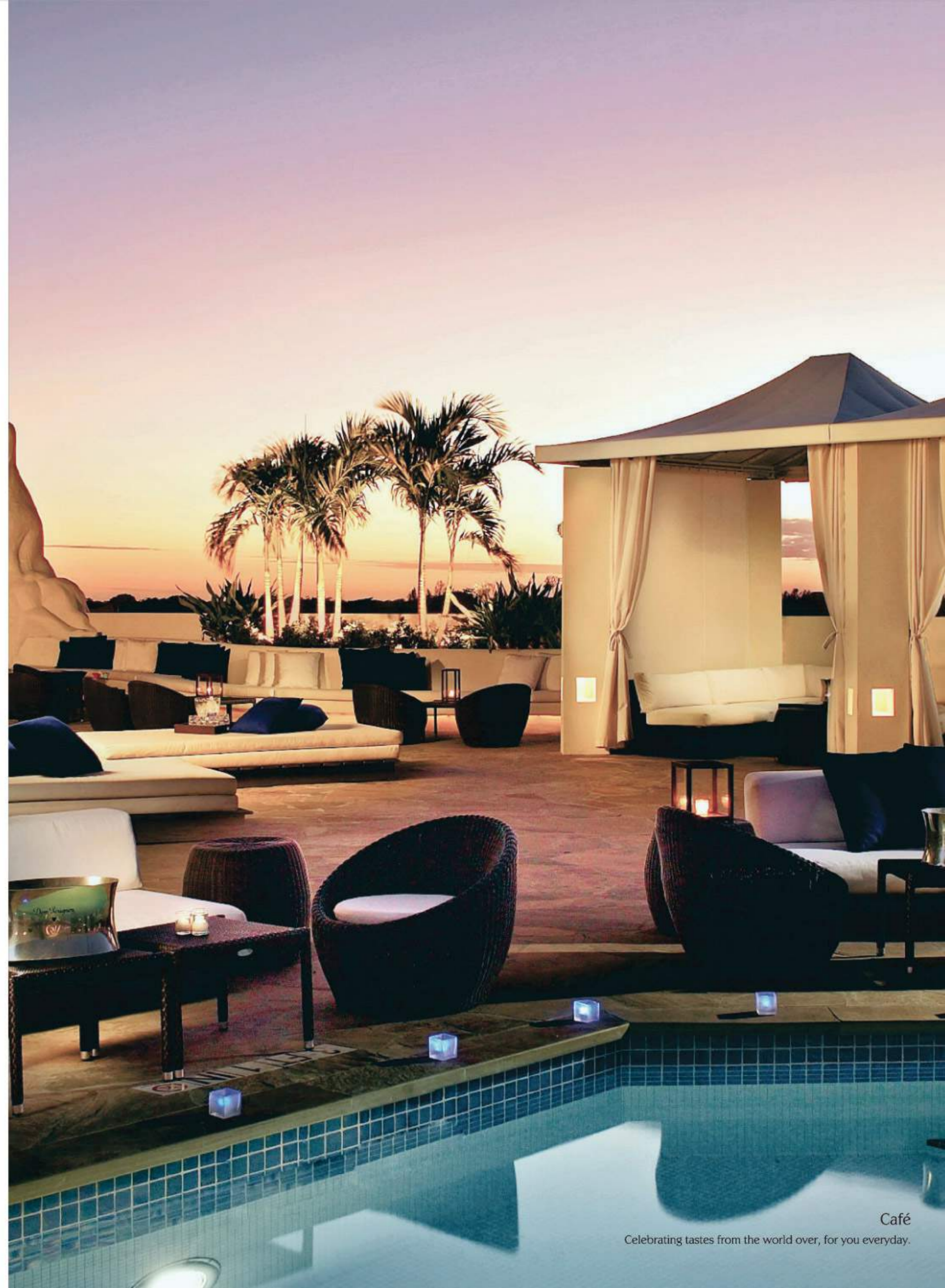
Infinity Spa Pool
Enliven your soul and energize your spirits.



Gazebos
Pleasant conversations that you wished were never-ending.



Yoga Terrace
Cherish tranquility, adorned with luxury.



Café
Celebrating tastes from the world over, for you everyday.



THE PARK CENTRAL

floor plan

Whether you want to flaunt the bungalow lifestyle or live it large with the well appointed and magnificent flats at The Park Central, we give you the choices.

Floor Details

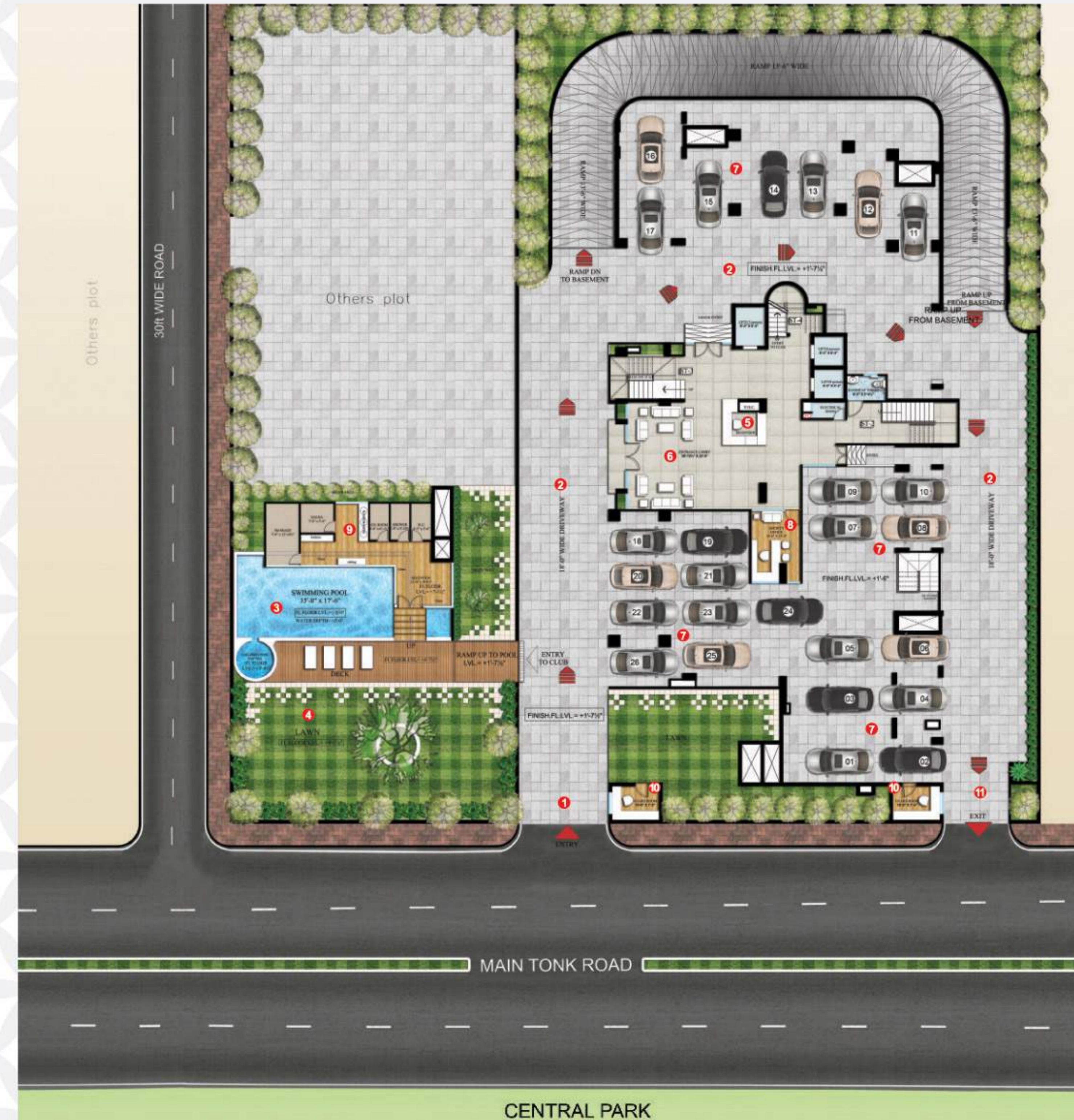
- Lower Basement - Parking
- Upper Basement - Parking
- STILT Floor - Parking + The Park Club
- 1st Floor - 4 BHK Flats + The Trinity Club
- 2nd To 10th Floor - 3 and 4 BHK Flats
- 11th & 12th Floor - 5BHK Sky Bungalow
- 13th Floor (Terrace) - The Sky Club



STILT FLOOR PLAN

LEGENDS

- | | |
|-------------------|-------------------|
| 1. Entry | 7. Parking |
| 2. Driveway | 8. Society Office |
| 3. Swimming Pool | 9. Spa Area |
| 4. Garden Area | 10. Guard Room |
| 5. Reception Area | 11. Exit |
| 6. Lobby Area | |



1ST FLOOR PLAN



TYPICAL FLOOR PLAN

(2nd to 10th Floor)



THE TRINITY CLUB

1. Multipurpose Hall / Games Room
2. Club Lobby
3. Gymnasium
4. Guest Room
5. Movie Theatre
6. Lobby Area

4 BHK (102 - 1002)
S.B.U.A. - 3371 sq feet

4 BHK (101 - 1001)
S.B.U.A. - 3371 sq feet



3 BHK (204-1004)
S.B.U.A. - 2907 sq feet

3 BHK (203 - 1003)
S.B.U.A. - 2877 sq feet

4 BHK (202 - 1002)
S.B.U.A. - 3371 sq feet

4 BHK (201 - 1001)
S.B.U.A. - 3371 sq feet

← Tonk Road →

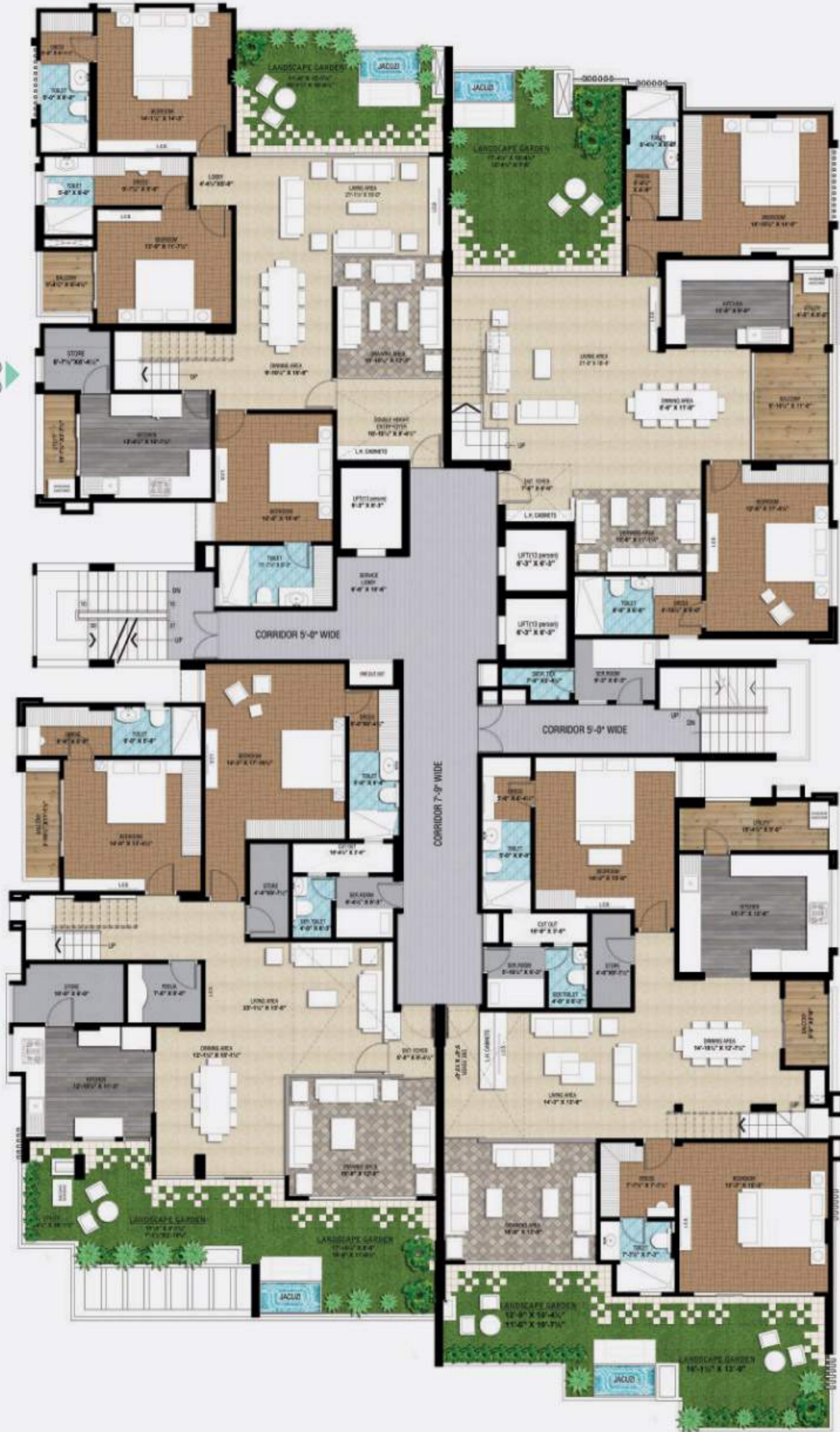
← Tonk Road →

11TH FLOOR PLAN



12TH FLOOR PLAN

4 BHK (1104)
(Lower Level)



4 BHK (1103)
(Lower Level)

5 BHK (1102)
(Lower Level)

5 BHK (1101)
(Lower Level)

4 BHK (1104)
(Upper Level)



4 BHK (1103)
(Upper Level)

5 BHK (1102)
(Upper Level)

5 BHK (1101)
(Upper Level)

TERRACE FLOOR PLAN

(13th Floor)



THE SKY CLUB

- | | |
|----------------------|----------------------------|
| 1. Golf Putting | 6. Lift Lobby Area |
| 2. Gazebo Seating | 7. Garden Area |
| 3. Yoga Area | 8. Fire Place |
| 4. Cafeteria | 9. Kitchen Serving Counter |
| 5. Infinity Spa Pool | 10. Kitchen |

unit plans

4 BHK UNIT PLAN

(Flat No. 101 to 1001 - 3371 sq. feet)



4 BHK UNIT PLAN

(Flat No. 102 to 1002 - 3371 sq. feet)



3 BHK UNIT PLAN

(Flat No. 203 to 1003 - 2877 sq. feet)



3 BHK UNIT PLAN

(Flat No. 204 to 1004 - 2907 sq. feet)



THE SKY BUNGALOW

The enigmatic opulence of the duplex 5 BHK "Sky Bungalow" leaves you totally satiated on accounts of space, features and amenities. With both the levels having front landscaped gardens, feel that the central park gets extended to your own home. Wake up with an unparalleled view of The Central Park and spend your evenings with the glimmering twilight giving you a sense of serenity like nowhere else. Lavish, unique, affluent and enigmatic, that's a "sky-high" life for you.



11TH FLOOR
LOWER LEVEL PLAN

5BHK DUPLEX SKY BUNGALOW

12TH FLOOR
UPPER LEVEL PLAN



← Tonk Road →



← Tonk Road →



5 BHK (1101)
Lower level S.B.U.A. - 3371 sq feet
Upper level S.B.U.A. - 2862 sq feet
Total S.B.U.A. - 6233 sq feet

6 BHK UNIT PLAN (Optional)

(S.B.U.A. - 5784 sq. feet)



SPECIFICATIONS

GENERAL

- RCC framed Earthquake compliant structure.
- Vastu compliant flats.
- Silent DG for power backup for common areas and flats
- Exquisite entrance lobby with reception.
- 2 automatic 8 passenger high speed elevators and 1 stretcher elevator of latest technology.

COMMON AMENITIES

- Well landscaped Garden Area.
- Swimming Pool with separate Kids Pool and Spa
- Society Office
- Well equipped fully air-conditioned Gymnasium
- Party Hall / Games Room
- Mini Theatre for the residents
- Guest rooms for the residents
- Infinity Spa Pool
- Landscaped Terrace Garden Area
- Rooftop Cafeteria
- Gazebos
- Golf Putting
- Yoga Terrace

LIFESTYLE SERVICES

- Each flat to have DTH connections.
- Fully Wifi enabled apartments

FLOORING

- Italian/Imported marble in drawing ,dining and living area. Wooden/Vitrified in bedrooms. Anti skid tiles in Bathrooms.

DOORS AND WINDOWS

- Door frames of seasoned first quality teak wood. (SAGWAN)
- Teak Veneer flush doors and insulated UPVC /anodized aluminium French windows for low noise and heat.

AIR CONDITIONING

- Fully air conditioned flats.

SOLAR ENERGY

- Solar heaters for solar energy to heat water in bathroom and kitchen.

KITCHEN

- Full modular high-end kitchen.
- Stand alone cooking range (with hob & microwave).
- Chimney of a Premium brand like Kaff / Faber.
- Centralized LPG gas pipeline system.

TOILETS

- Designer toilets with international standard sanitary ware and cp fittings (Kohler / Grohe).
- Wall hung W.C of a premium brand.
- Glass shower partitions in all toilets.

ELECTRICAL

- Air conditioning in rooms and living room of Daiken / O General.
- All wiring of good quality ISI grade of Finolex or equivalent brands.
- Geysers and exhaust in toilets.
- TV, telephone and internet line points.
- Modular switches of Legrand/Havells/Anchor or equivalent brand.

SAFETY AND SECURITY

- CCTV cameras with 24 hrs recording.
- EPABX for security and intra-building communication.
- Biometric door lock at entrance lobby.
- Video door phones in each flat.
- Efficient and effective fire fighting systems as per norms.

WATER SUPPLY

- 24 hrs adequate water supply.
- Boring with overhead storage tank.
- Underground water tank for additional water storage.
- Rain water harvesting system to maintain ground water level.
- Water Softening & sand filtration plant.



Propelled by the energetic vision of young entrepreneurs who abide by the ethics of their predecessors and lead the brand with dynamic contemporary acumen; Ridhiraj Builders has proven itself to be a front runner in the realm of Real Estate Development.

A brand that's focused on evolving the plethora of offerings that the Real Estate sector has to offer in Rajasthan, Ridhiraj Builders strive to create a niche of their own by presenting iconic projects to their distinguished patrons and giving them the residential pleasures that are rarely obtained while choosing any other existing equivalent.

Positioned as a 'Super' Luxury service provider Ridhiraj Builders as a brand provides possessions to the upper crust of the society which have been tastefully designed, developed and created by celebrated experts from the industry.

Right from handpicking the most premium and posh locations to planning of the project and adding unique stand-out features to each project, over the span of time, Ridhiraj Builders have developed an identity of a trendsetting brand, that provides the perfect match to the towering expectations of its affluent and class driven consumers.

OTHER PREMIUM PROJECTS BY THE GROUP



BUNGALOW 8
Bhawani Singh Road,
Rambagh Circle, Jaipur

ARALYAS
Opposite Pink Square Mall,
Govind Marg, Jaipur

AIR
Opposite Shyam Nagar,
Main Ajmer Road, Jaipur

RIDHIRAJ ENCLAVE
Hanuman Nagar-D,
Vaishali Nagar, Jaipur

RIDHIRAJ RESIDENCY
Vijay Path,
Tilak Nagar, Jaipur

RIDHIRAJ AVENUE
Near Amrapali Circle,
Vaishali Nagar, Jaipur