

Homes in harmony with nature



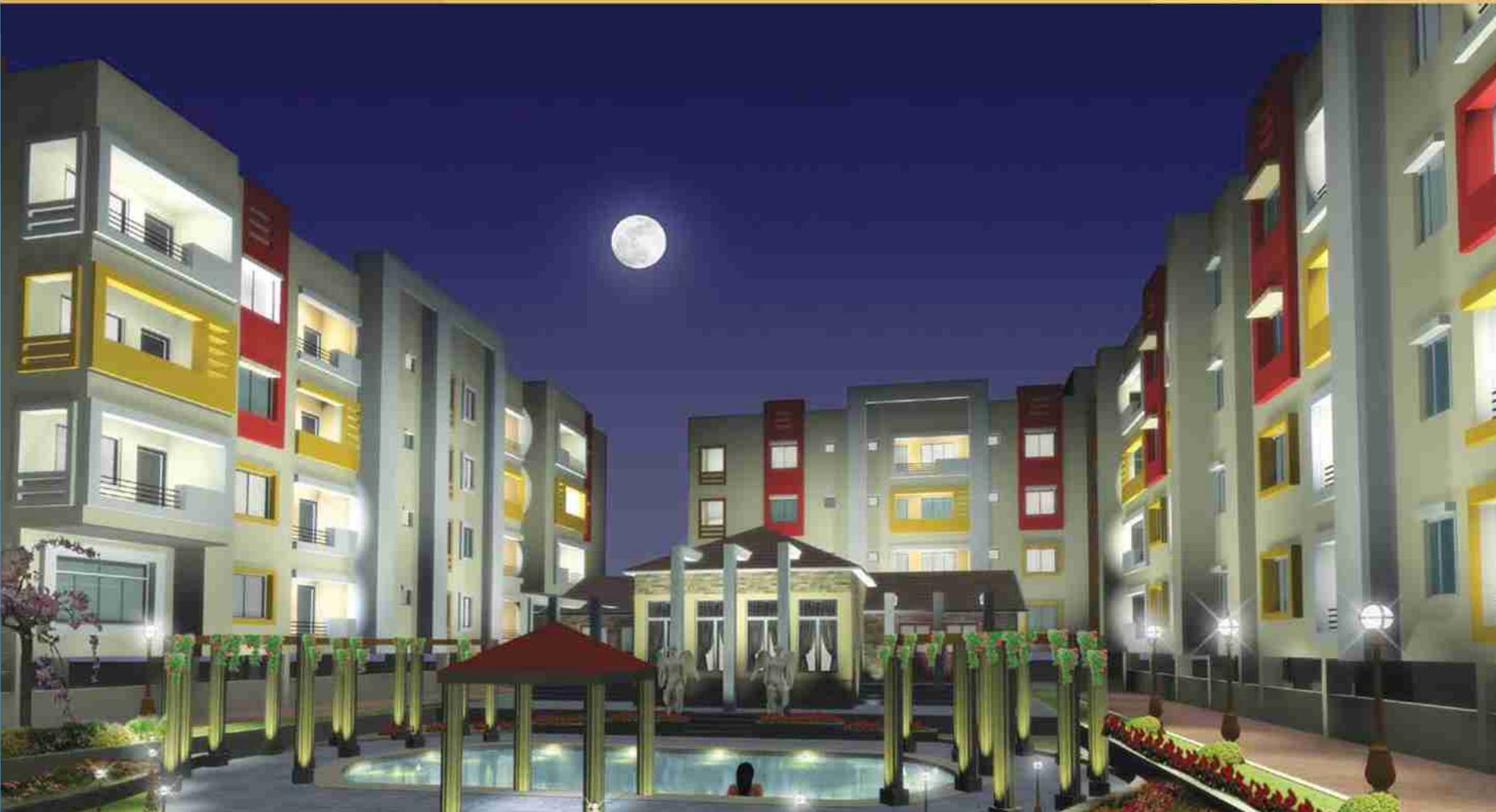
Panda
Residency

Satyabhamapur, Bhubaneswar



About Panda Infrastructures

Bhubaneswar - the capital of Odisha and the 2nd planned city of India is a rare example of old world charm and modern day comforts held together in a graceful balance. Inspired by this exceptional amalgamation that the city boasts of, Panda Infrastructures also incorporates such unique blends in each of its projects. Aesthetically designed homes with a distinct stamp of comfort luxury and sophistication in carefully chosen, refreshing locales are the hallmark of projects developed by Panda Infrastructures. No doubt each of its projects offers much more than a mere "living space". Panda Infrastructures understands that your home is your dream and so they are meant to be special. That's why every home created by Panda Infrastructures has that special touch to make your dream come true.



Project
successfully
Completed:

Top Left-
**Gatikrushna
Villa** at
Tankapani Road

Top Right-
**Kanchan
Villa** at
Saheed Nagar

Left-
**Nageswar
Residency**
at Patia



Project
under
Progress:

Top-
**Gatikrushna
Lagoon** at
Tankapani Road

Left-
**Panda Valley
Residency**
at Gotal Grama

Panda Residency

Far from the madding crowd yet offering a lifestyle that is distinctly sophisticated...That's how Panda Residency can be precisely described. Located amidst lush green environs, just 6 kms away from Ravi Talkies square. Panda Residency offers a unique refreshing atmosphere.

Surrounded by a clean, pollution free environment away from the city's crowd and noise, yet laced with every comfort of city life, Panda Residency is much the home "straight from your dreams". The project placed just opposite to Panda Valley (Panda Infrastructure's successful duplex project) comprises of 142 units of 1/2/3 BHK apartments, aesthetically designed to stand out and smartly equipped to make your life easy.

A centrally landscaped garden, large and spacious community hall, 24 hours water supply, adequate power back-up for common area and a highly secured compound with CCTV installation are a few of the many facilities that make Panda Residency a desirable address.

With homes creating a cozy and comfortable living space in a locality that rejuvenates your mind, body and soul, Panda Residency stands to redefine quality living, offering you the best of both worlds.





1/2/3 BHK-142 apartments | 6 kms from Ravi Talkies square | 6000 sqft. Club house

Panda Residency

Satyabhamapur, Bhubaneswar

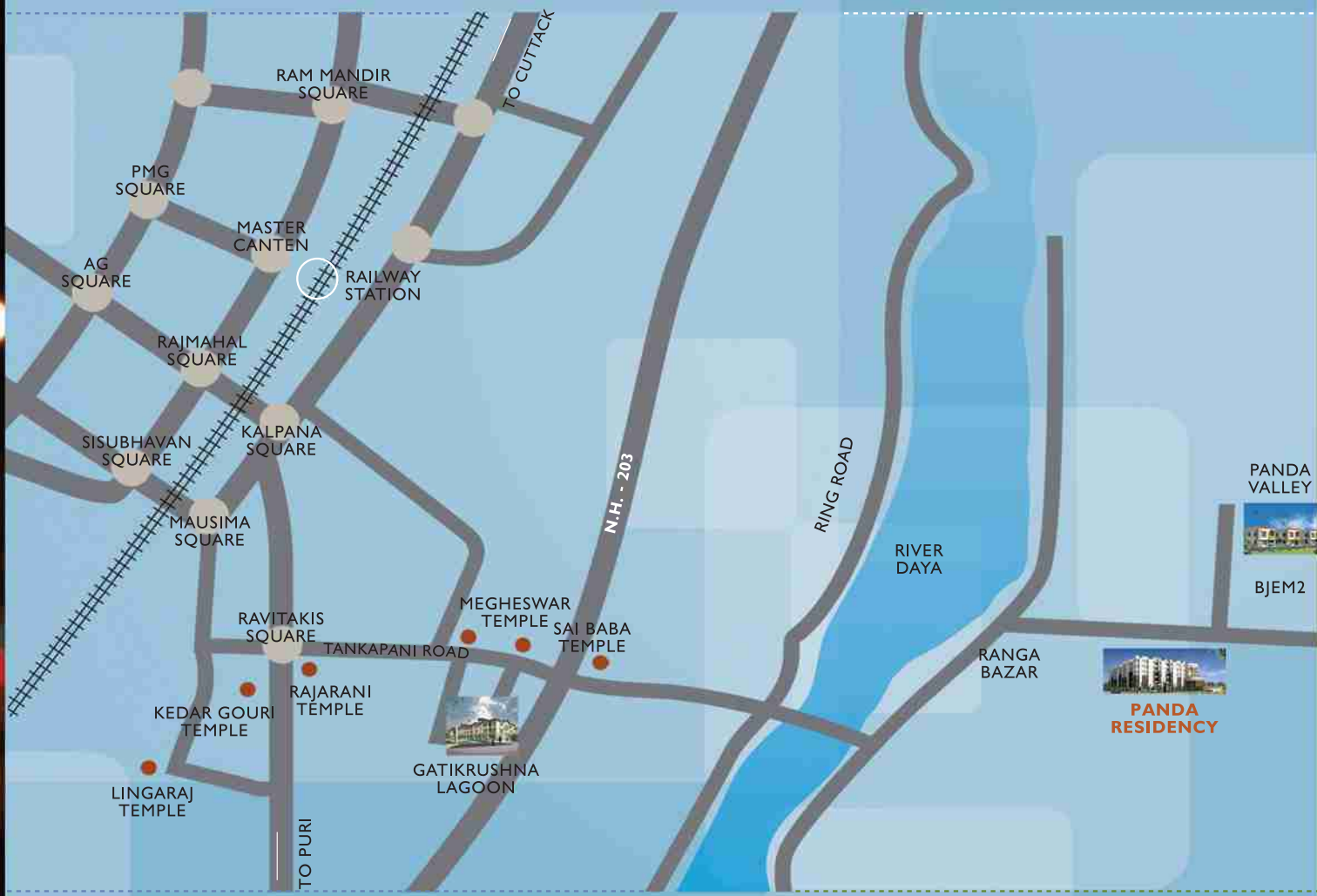


equipped with all modern amenities | Highly secured compound | Pollution-free environment



Location Map

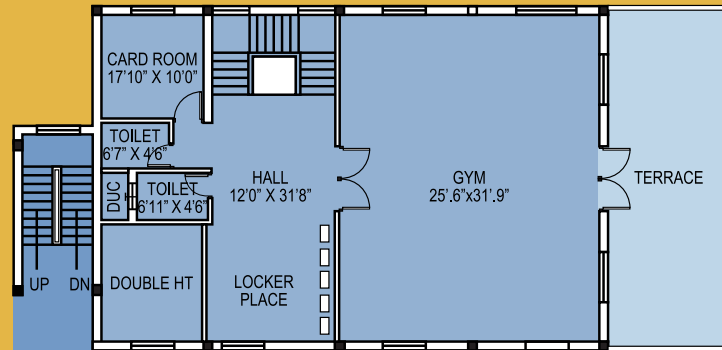
Only **6 Kms.**
from Ravi Talkies
Square.



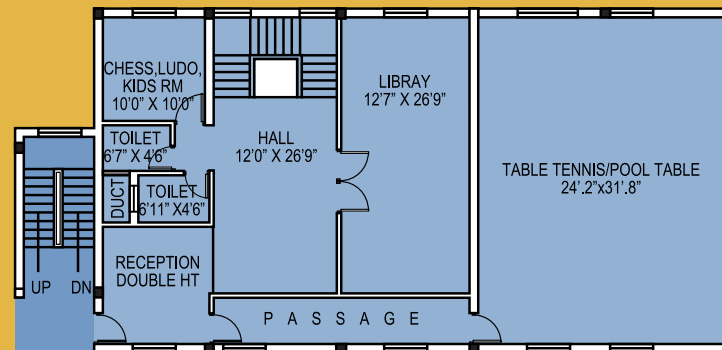




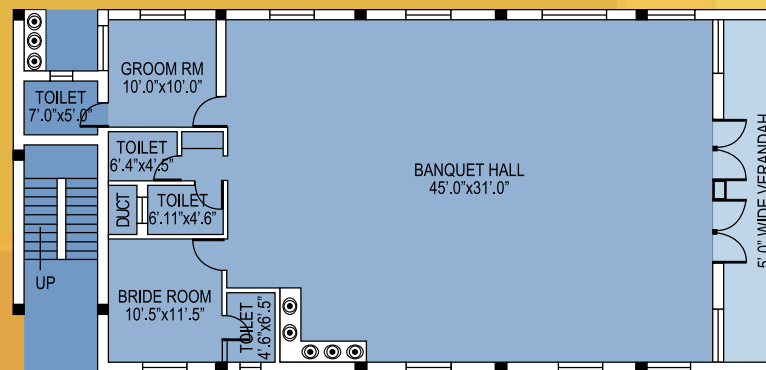
Floor Plan Club House



2nd Floor



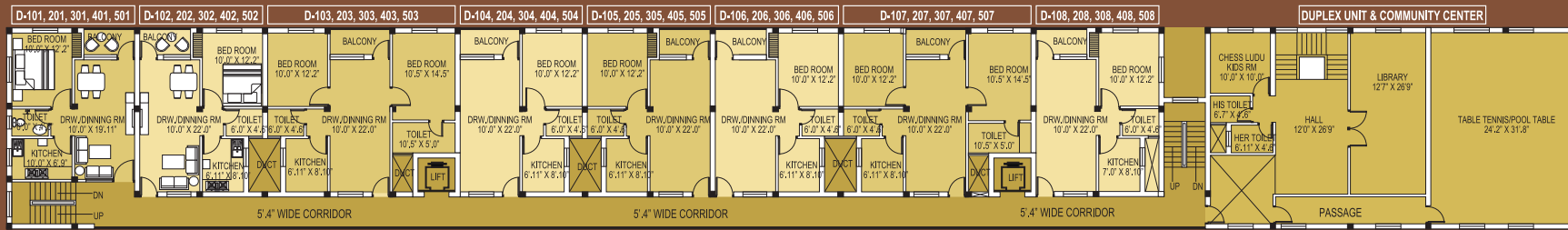
1st Floor



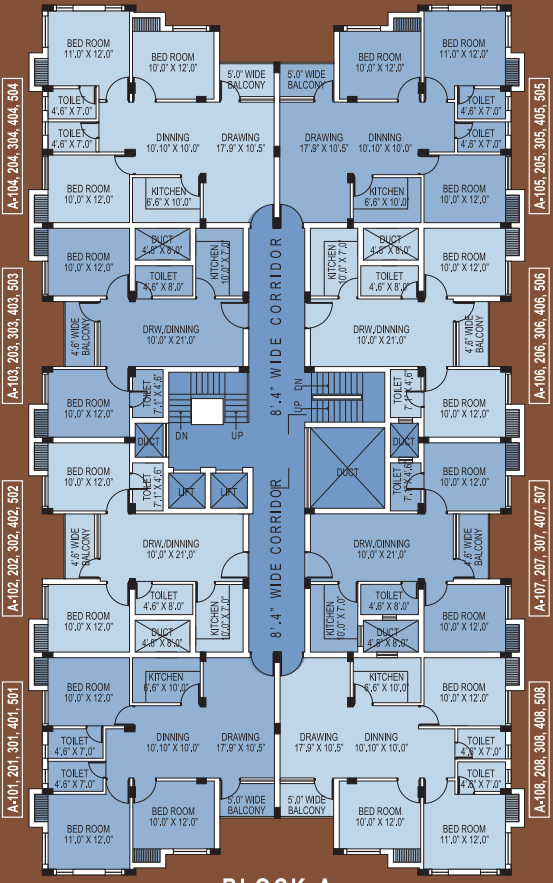
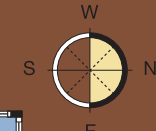
Ground Floor

AMENITIES

- 6000 sqft. Club house
- Banquet Hall
- Table Tannis
- Pool Table
- Card Room
- Chess/Ludo Room
- Library Room
- Fully equiped AC
- Multi Gym



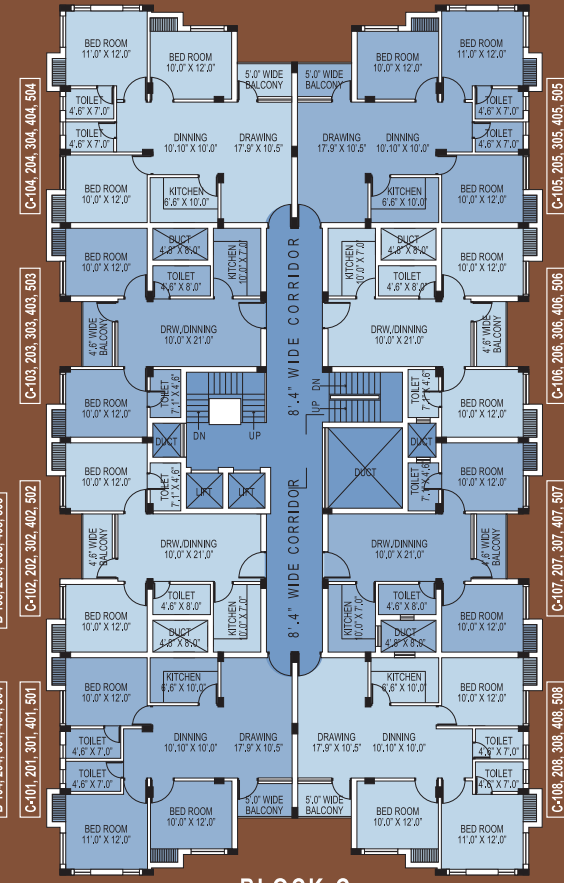
BLOCK-D



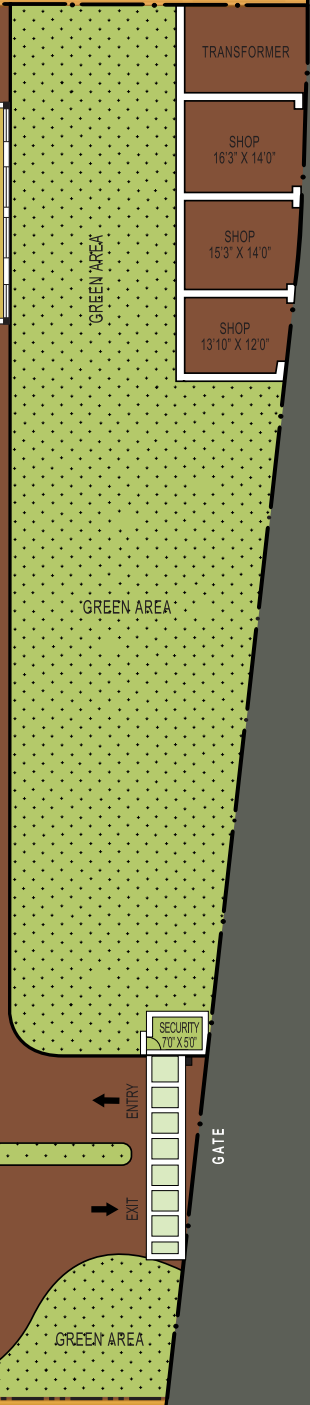
BLOCK-A



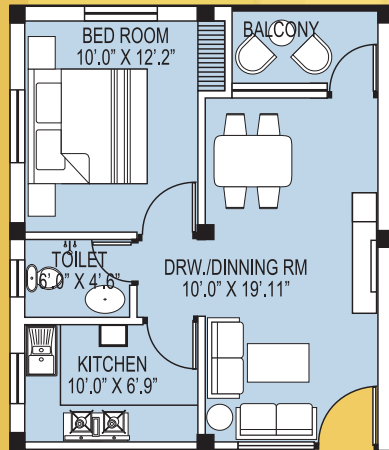
BLOCK-B



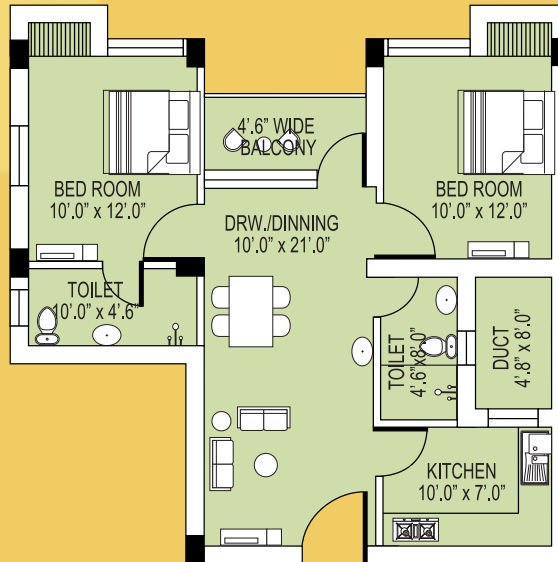
BLOCK-C



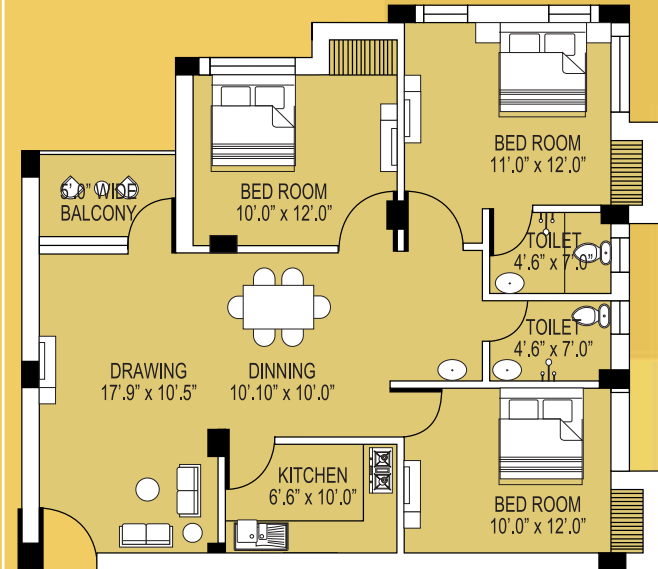
Typical Floor Plan



Floor Plan
One Bed Room
Area - 695 sqft.



Floor Plan
Two Bed Room
Area - 952-972 sqft.



Floor Plan
Three Bed Room
Area - 1262 sqft.

The Specifications

STRUCTURE

- Earthquake resistant RCC framed structure with Fly ash / Concrete brick wall.

FLOORING/WALL TILE

- Room - Vitrified Tiles
- Kitchen - Vitrified Tiles
- Toilet - Anti skid Ceramic Tile
- Common Area - Vitrified Tiles

DOORS AND WINDOW

- Main doors - Flush Door with lamination.
- Inner doors - Flush Door with enamel Paint.
- Door Frames - Sal Wood / Block board Frame.
- Windows - Powder Coated Aluminum with glass & protected with MS grill.
- Toilet - Water proof PVC Door.

ELECTRICAL

- Modular Electrical Switches.
- All room provided 2 light points, 1 Fan point along with 1 plug point.
- 1 TV point, 1 Phone Point in Master Bedrooms and Drawing Room.
- Provision for AC in Master Bed Room. (Split)
- Provision For Inverter.

TOILETS

- CP fittings of any ISI Brand.
- Designer tiles on walls upto 7 ft. height.
- Provision for exhaust fan.
- Provision for geyser.

KITCHEN

- Cooking Platform with green marble.
- Stainless steel sink.
- Designer tile up to 2 ft above the platform.
- Provision for exhaust fan.

WALL FINISHES

- Internal - Distemper paint over plaster.
- External - Weather coat paint.

OTHERS

- 1 Loft over toilet.
- 1 Taza provided in kitchen.
- 1 designer wash Basin with Mirror in Dinning area.
- 1 Water Point and Drainage for washing Machine.

COMMON FACILITIES

- 24 hours water supply.
- External security with 24 hours video recording.
- Centralized landscaped garden.
- Power back-up for common area.
- Community hall.





In the days ahead

Committed to create homes that are much more than mere living spaces, Panda Infrastructures has many exceptional projects to its credit. Right from selection of locale to the amenities provided in the house, the company takes care of every small detail with an intent to offer quality living through each of its creations. It has come a long way creating projects like the elegant Gatikrushna Villa at Tankapani Road, the luxurious Gatikrushna lagoon at Brahmeswarpatna, the smart apartments of Kanchan Villa at Saheednagar and the remarkable Panda Valley in the lap of nature at Gotal Grama on the bank of River Daya.

The company through such projects has earned enviable credibility and boasts of many satisfied customers. With its most recent offering the aesthetic Panda Residency located opposite Panda Valley, Panda Infrastructures adds another defining landmark to the map of Bhubaneswar and is confident to create many more such addresses in future.



SOLICITOR
Surya Narayan Das

CONSULTANTS
NOTION

For Booking Please Contact:

Mobile: **9437028781**



Joyful Living for You...

Panda Infrastructures (P) Ltd.

Plot No-119, Gatikrushna Villa, Brahmeswar patna, Tankapani Road, Bhubaneswar - 751 018

E-mail : pandarealestate@gmail.com