

—Aundh  Riviera—

@BHAU PATIL ROAD

1 & 2 BHK Boutique Homes

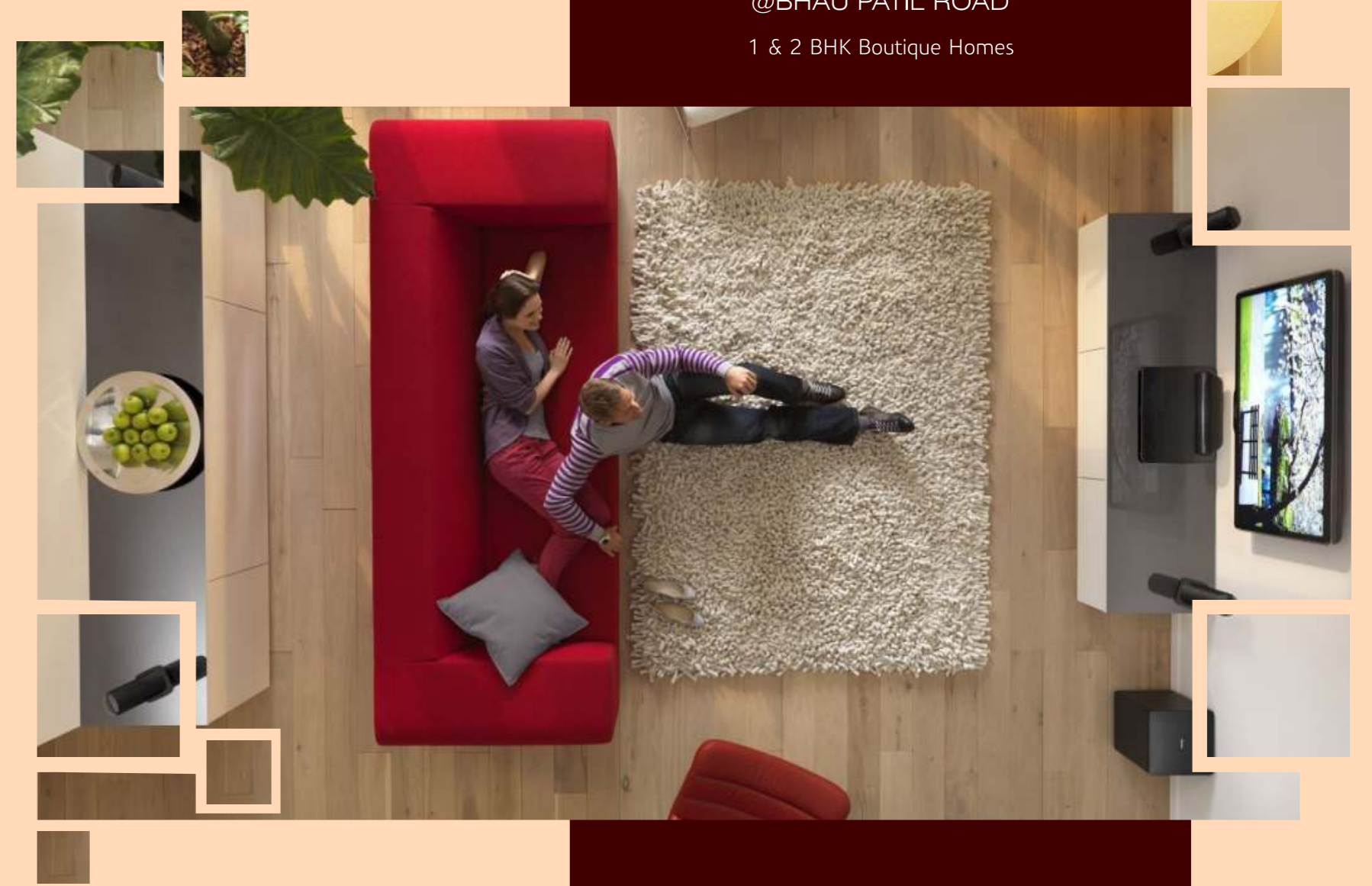
A project by



Corporate Office: Bhansali House, 1187/61, JM Road, Pune - 411005, [www.bhansalis.in](http://www.bhansalis.in)



All the floor plans, specifications and details are subject to change and builder can change any / all of there without informing customers. Images are not from show flat but only for the representation purpose.



Where every square inch  
is filled with pure bliss

## Upgrade to better living at the comfort of your own vicinity

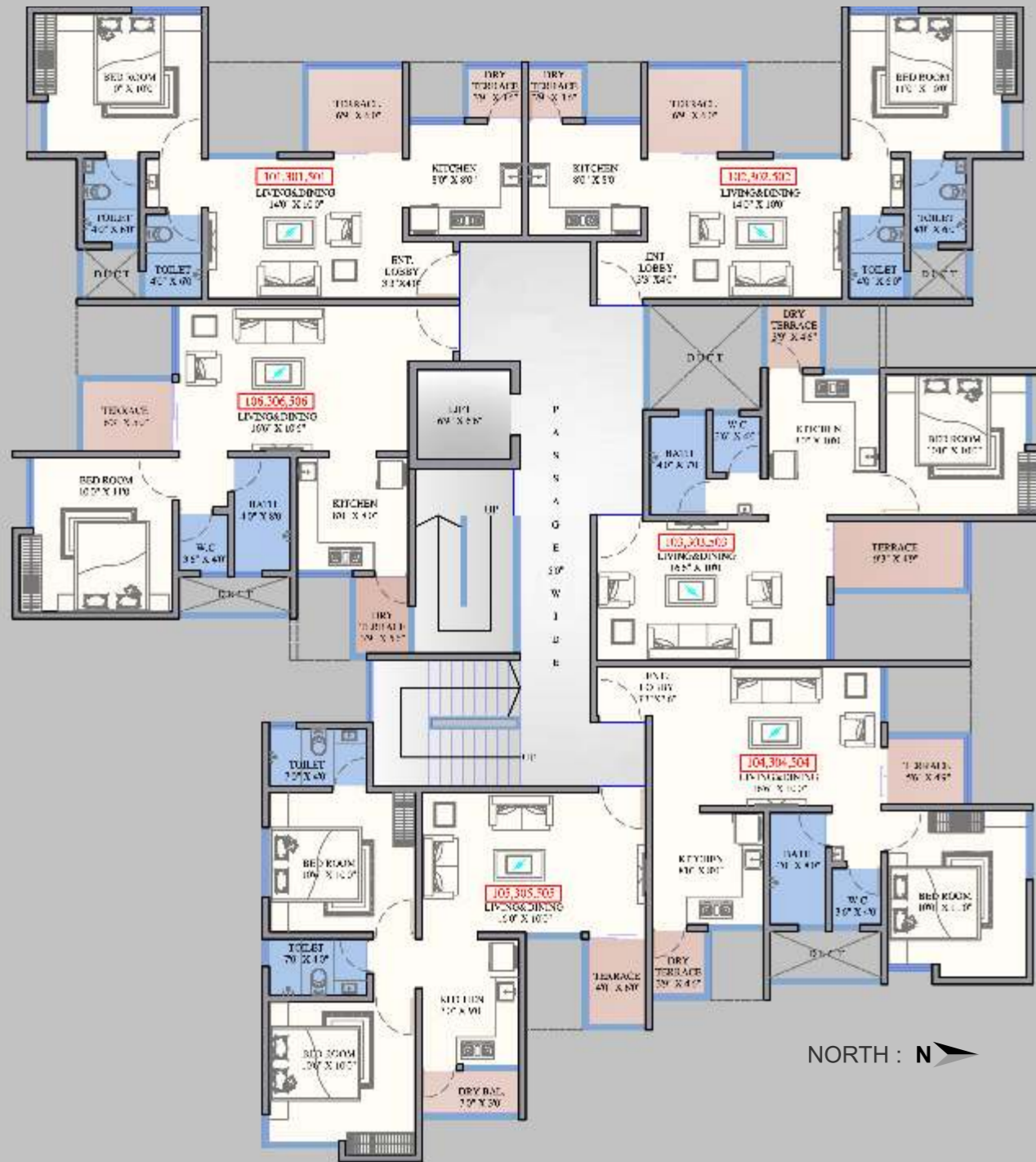
When it comes to taking a decision to move to a new home, we all are excited yet little apprehensive about the new location, new locality and new environment. Not any more. Now move up to better living in the comfort of your own Bhau Patil Road. Enjoy the connectivity to Aundh, University, Mumbai Pune Highway, MIDC and all other facilities such as schools, colleges, Malls, Multiplexes and healthcare. Just move in to Aundh Riviera, the ultimate destination for you and your family. The apartments are planned and designed in such a way that they take care of your each small and big need.

—Aundh  Riviera—

## Proposed Elevation of Aundh Riviera

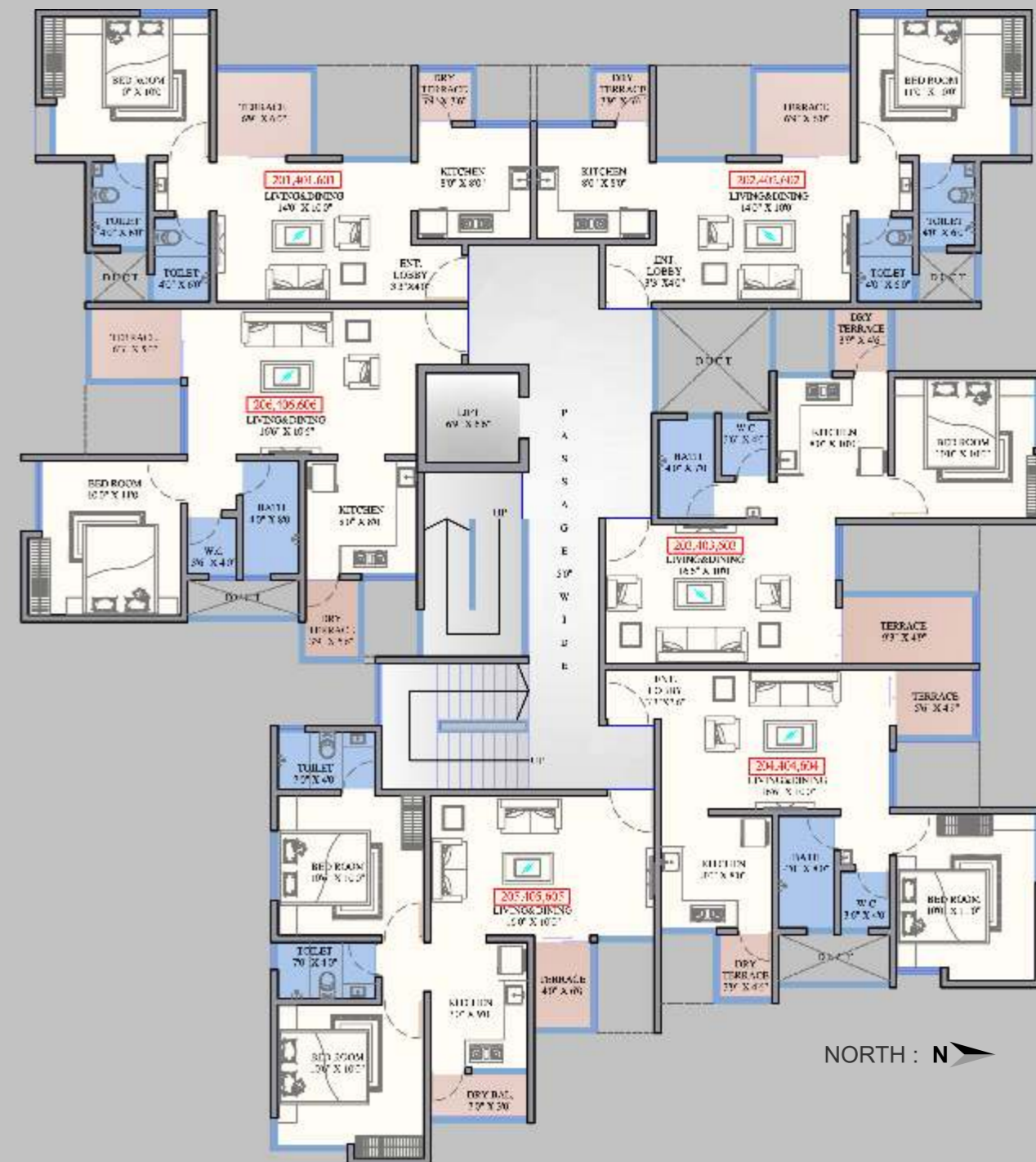






TYPICAL 1ST, 3RD & 5TH FLOOR PLAN

FLAT NOS.	TYPE	CARPET	TERRACE	SALEABLE
101,301,501, 102,302,502	1BHK	409.00	54.00	625.00
103,303,503	1BHK	413.00	61.00	640.00
104,304,504	1BHK	429.00	42.00	636.00
105,305,505	2BHK	542.00	24.00	764.00
106,306,506	1BHK	436.00	52.00	659.00



TYPICAL 2ND, 4TH & 6TH FLOOR PLAN

FLAT NOS.	TYPE	CARPET	TERRACE	SALEABLE
201,401,601, 202,402,602	1BHK	409.00	54.00	625.00
203,403,603	1BHK	413.00	61.00	640.00
204,404,604	1BHK	429.00	42.00	636.00
205,405,605	2BHK	542.00	24.00	764.00
206,406,606	1BHK	436.00	52.00	659.00



Spacefull of imagination



Home where the heart is...

When we say we keep your every small need in mind when designing our floor plans we really mean it. Your Living room is a perfect place to unwind and entertain friends and guests as the connectivity to kitchen makes it convenient to serve them. distribution of space makes sure you never fall short of space and comfort.

—Aundh  Riviera—

## Homes that bring eternal piece

Windows are placed in your master bedroom in such a way that they bring ample fresh air and sunlight and provide sufficient privacy too. Intelligent design utilises every square inch of your home to provide you maximum usable space. So go ahead, Make Aundh Riviera your home at the earliest.

—Aundh  Riviera—







## Specifications

### Toilets

- Glazed dado tiles on walls up to the lintel level
  - Standard make bathroom fixtures in all **bathrooms**
    - 'EWC's' in all bathrooms
  - Provision for exhaust fans in toilets

### Painting

- OBD paint finish for internal walls
- Superior quality paint for external walls

### Kitchen

- Granite platform
- Stainless steel sink
- Drain board

### Tiles

- Vitrified tiles

### Doors

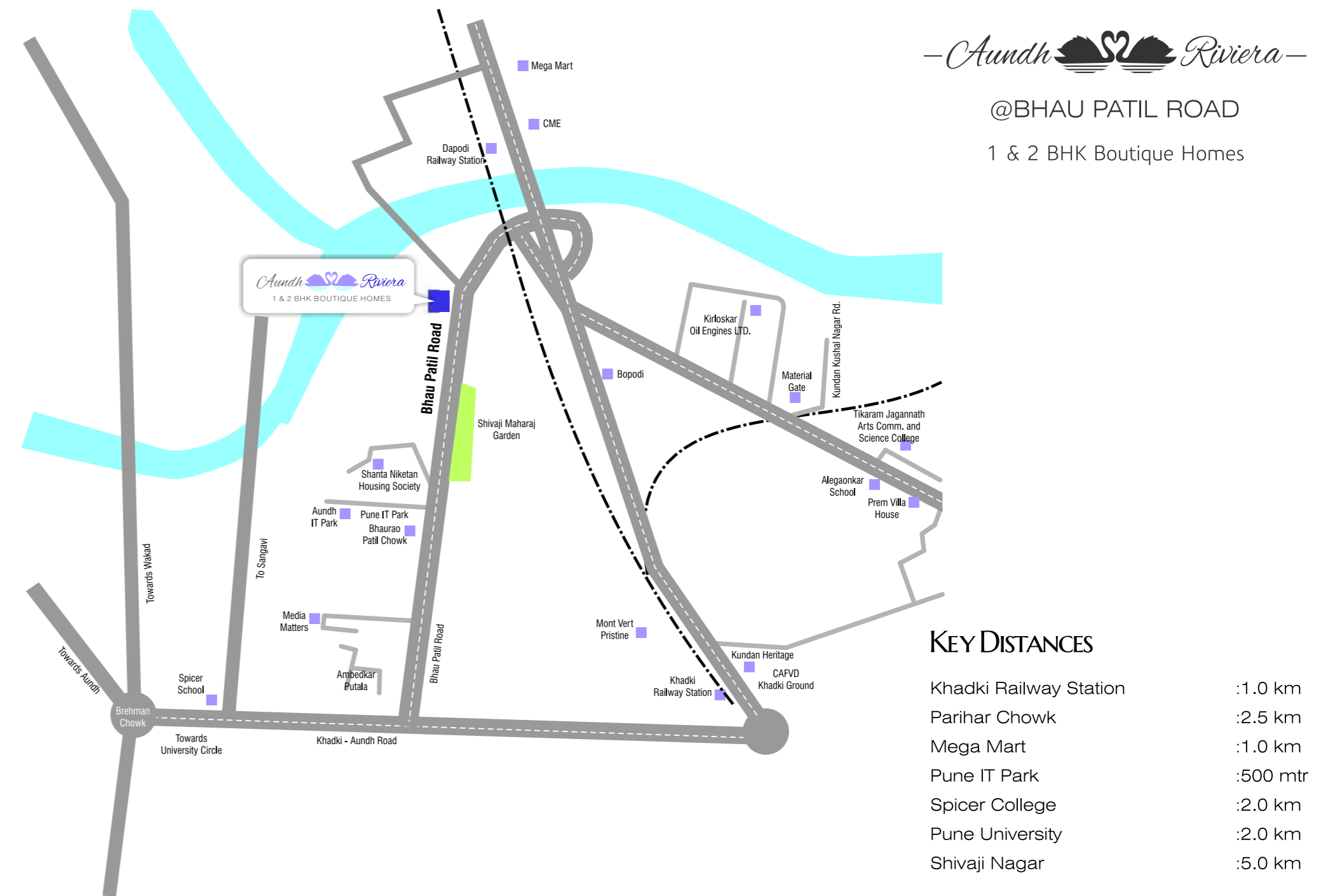
- Decorative entrance door & name plate
  - Internal flush doors
  - Window door frames

### Windows

- 3 track, powder coated, aluminum windows
  - MS safety grills on all windows

### Electrification

- Concealed copper wiring with MCB units
- Cable and telephone points in the living room



— OUR ONGOING PROJECTS —



ParkMarina

2 & 3 BED APARTMENTS

BANER-AUNDH LINK ROAD

Welcome to the jewel in the crown of Baner!



PRIVÉ rio

*the privileged life*

3 BED APARTMENTS

PRABHAT ROAD

Pride of Prabhat Road



— OUR BENCHMARKS —

ACE	: JM ROAD
AMALENDU	: MODEL COLONY
E-SQUIRE	: APTE ROAD
GANDHARVA	: JM ROAD
NEELKANTH	: JM ROAD
NIRMAL	: LAW COLLEGE ROAD
RUTURANG	: PRABHAT ROAD
SHRAVAN	: MODIBAUG
SRINIWAS	: APTE ROAD
VEDANT	: TILAK ROAD
VENUS TRADERS	: FC ROAD
WINNERS WINDOWS	: FC ROAD