



Zephyr's
Zone

Caressed by the breeze

*Whispering
winds*

2 BHK Terrace Apartments
@ Baner (S. NO 215/8, 217/1, 218/9)



A Class that defines Style.

APARTMENT FEATURES & SPECIFICATIONS

FLOORING

Vitrified tiles
Antiskid tiles in toilets & terraces

KITCHEN

Granite kitchen Otta with stainless steel sink
Provision for exhaust fan
Provision for water purifiers

DOORS AND WINDOWS

Decorative main door & internal flush doors
2/3 track powder coated aluminum windows with mosquito net
M S safety grills for windows

TOILETS

Glazed tile dado
Provision for exhaust fans
Concealed plumbing work
Jaquar or equivalent make toilet fittings
Hot & cold mixture unit in all toilets

ELECTRIFICATION

Concealed copper wiring with circuit breakers
Modular switches

PLASTER

External walls in sand faced plaster

UPLIFTING ENTRANCE

An opulently-designed Entrance Lobby
Mesmerizing lift corridor

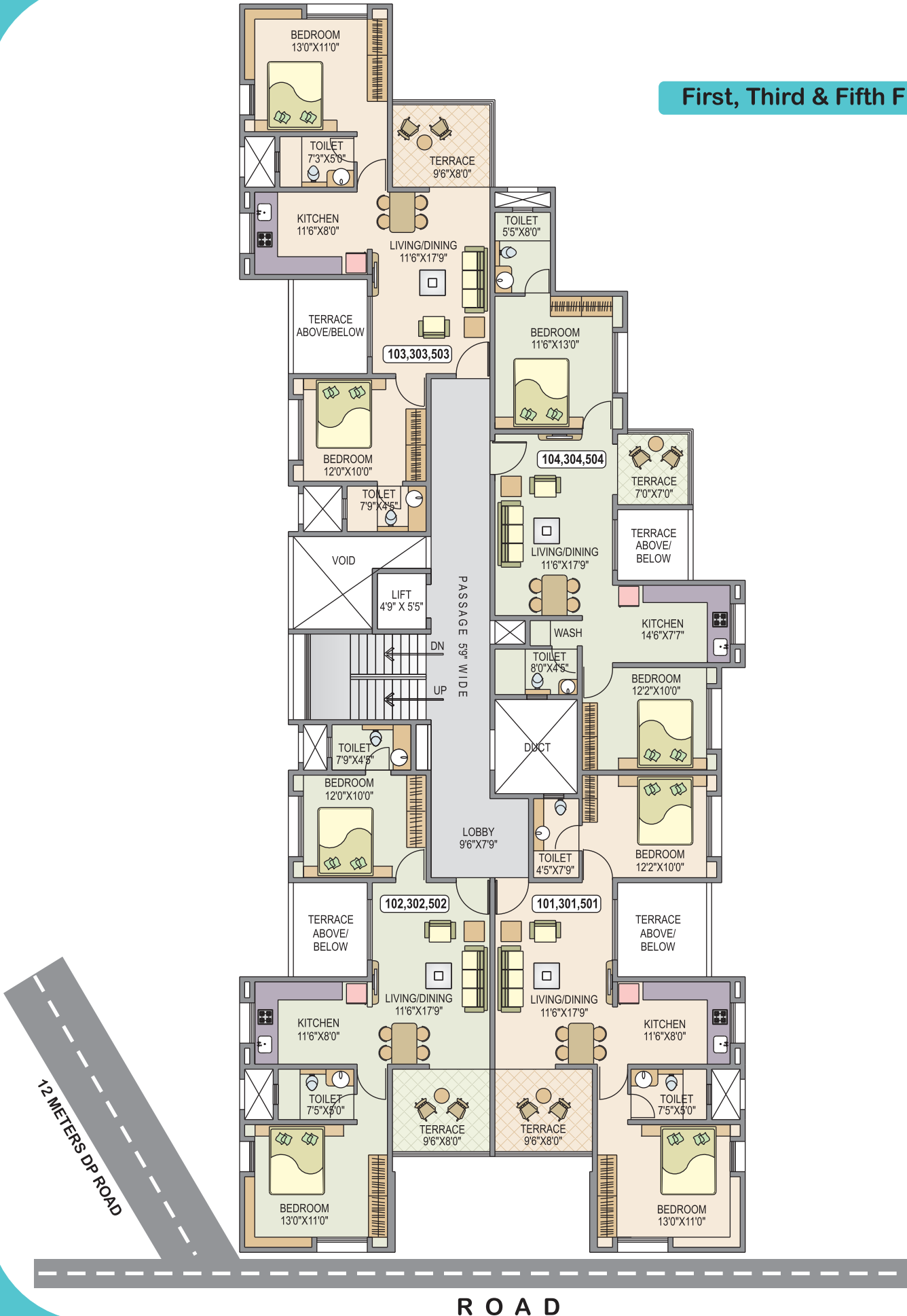
ESSENTIAL FACILITIES

Back up for Lift & common areas

*Whispering
winds*

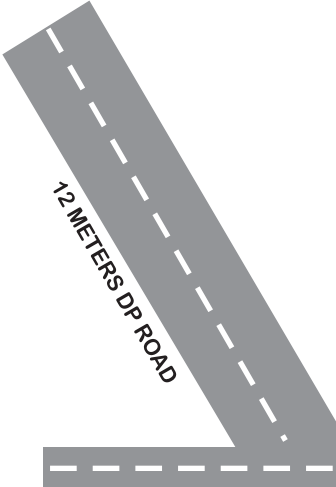
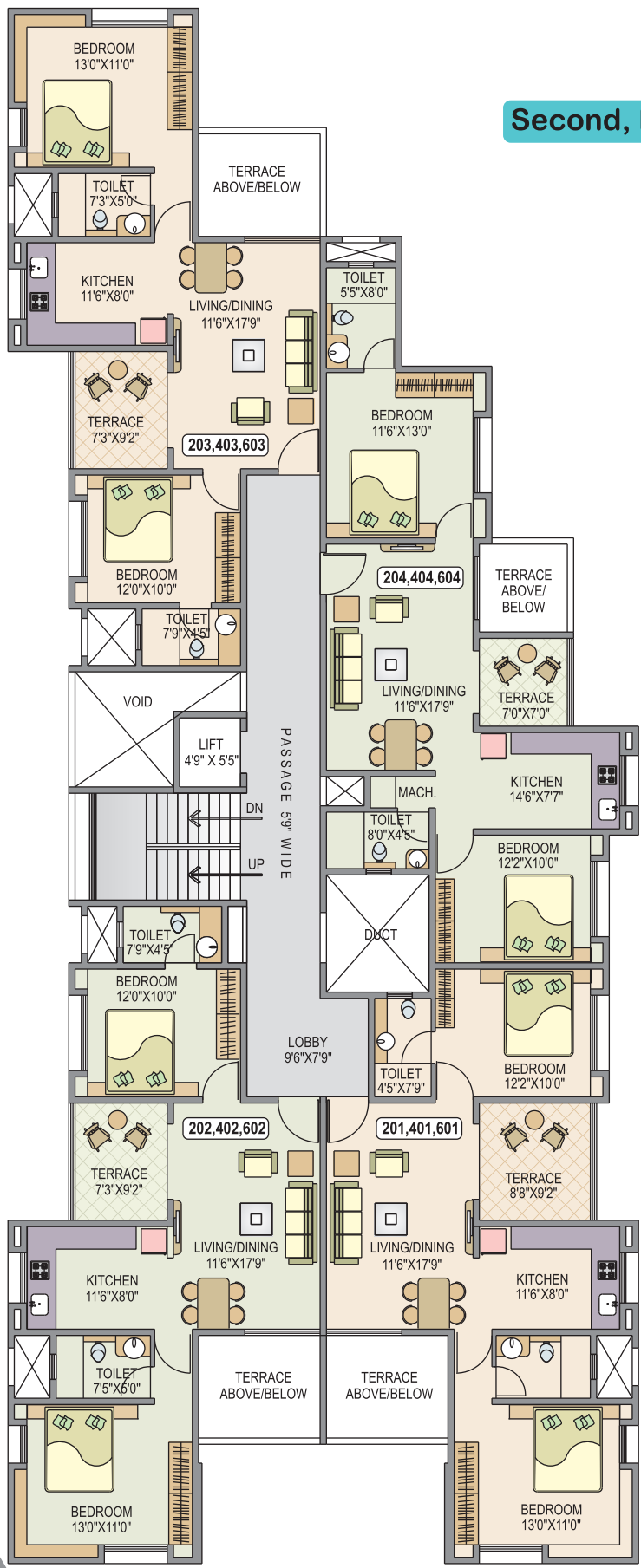
2 BHK Terrace Apartments @ Baner

First, Third & Fifth Floor Plan



NOTE : This Brochure is purely conceptual and is designed in good faith to give you a fair and overall view of the project and is not a legal offering, nor will it be part of any agreement. Photographs are not necessarily comprehensive or current. Nothing contained in this brochure will take precedence in the final agreement. Number of buildings, areas, flats/units, amenities, specifications, floors, furniture layout, roads, open space etc. may be revised.

Second, Fourth & Sixth Floor Plan



R O A D



NORTH

Contact: Tel - 020-2433 6599, M: 98231 40001
Email: contact@bhansaliassociates.com / abhatevara@hotmail.com