



REALIZE YOUR DREAMS TO LIVE IN THE GEOGRAPHICAL CENTER !

DISCOVER A NEW BENCHMARK

Kesar Alanta is a premium residential project is being developed, to compliment luxury lifestyle and comfort you always sought. Kesar Alanta is an architectural phenomenon that offers a grandeur view of life! In addition to that amenities at Kesar Alanta would surely make it perfect choice for you !



**KESAR
ALANTA**
2 & 3 bhk residential living space...

A
PREMIUM
RESIDENTIAL
PROJECT



A
PREMIUM
RESIDENTIAL
PROJECT



PUT
ITS HEIGHT
ADVANTAGE
TO FULL USE!



A STRIKING
ARCHITECTURAL
BUILDING

SALIENT FEATURES :

- 24 HR WATER SUPPLY
- CCTV CAMERA
- CAR PARKING
- ROUND THE CLOCK SECURITY

LUXURIOUS FACILITIES :

- DECORATIVE MAIN ENTRANCE
- GYMNASIUM
- SENIOR CITIZEN SITTING
- SECURITY CABIN
- CHILDREN PLAY AREA

INDOOR GAMES :

- TABLE TENNIS
- CARROM
- CHESS

about
our luxurious
facilities...

Brought to life by an elegant construction firm, the presence of Kesar Alanta is cohesive yet individual, inspired by the passion to give a life experience of never before. Kesar Alanta is wonderfully spacious, the generous 2 & 3 bedroom-hall-kitchen offer sensational contemporary family living at the heart of the city.



**KESAR
ALANTA**
2 & 3bhk residential living space...

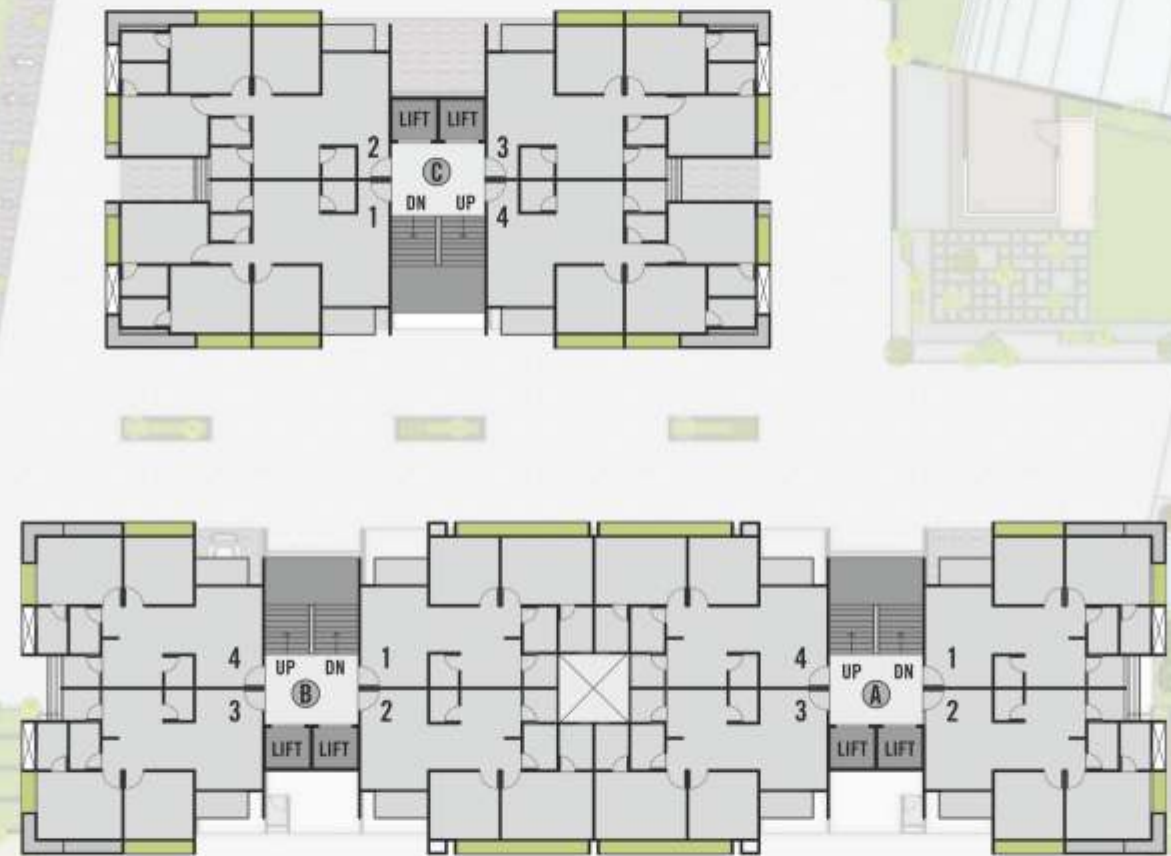


GROUND FLOOR PLAN



FIRST FLOOR PLAN





ASPIRE HIGH

ESCALATING

COMFORT

BEAUTIFYING

PLATONIC EXPERIENCE

THE LIFE IS PRECIOUS

**PENTHOUSE
10TH FLOOR**



**UPPER LEVEL PENTHOUSE
11 TH FLOOR**





 3 BHK LAYOUT PLAN



 3 BHK UPPER PENTHOUSE



 3 BHK LOWER PENTHOUSE



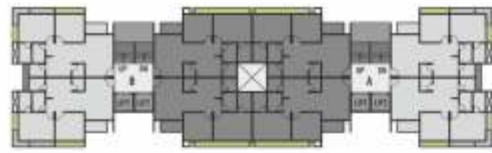
Kesar Alanta is superbly positioned in one of Ahmedabad's most tranquil suburbs. It is a place where bush land and open spaces are as abundant as in nature, where highly respected educational institutions and superior amenities including numerous shopping centers, libraries and public transport, etc. ensure that you are never left wanting for anything.

3BHK
BLOCK - C



TYPE - 1

 2 BHK LAYOUT PLAN



TYPE - 2

 2 BHK LAYOUT PLAN



TYPE - 2

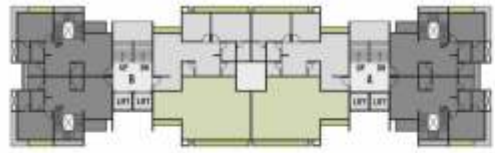
 2 BHK PENTHOUSE


KESAR
ALANTA
 2 & 3bkh residential living space...

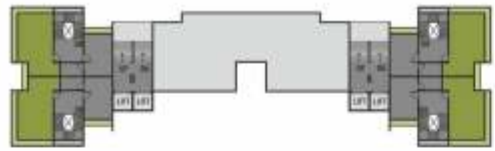


2BHK
 BLOCK - A&B





 2 BHK LOWER PENTHOUSE



 2 BHK UPPER PENTHOUSE





● **Structure**
Earthquake resistant, R.C.C frame structure with brick masonry wall

● **Wall finish**
Internal finish single coat mala plaster with wall putty & External double coat sand faced plaster with acrylic paint.

● **Flooring**
Good quality vitrified tiles in entire apartment. master bedroom with wooden flooring.

● **Toilet & Plumbing**
Glazed tiles dado up to lintel level & flooring. Concealed plumbing with Cera/equivalent brand sanitary ware & jaquar/equivalent brand C.P Fittings.

● **Doors & Window**
Decorative main door with wooden frame, all other internal doors will be flush type with enamel paint, fully glazed anodized aluminum section sliding windows with natural stone sill.

● **Kitchen**
Platform with granite top & S.S. sink with designer tiles dado up to lintel level.

● **Electrification**
Single phase concealed copper wiring with ISI standard quality accessories with sufficient electric points.

● **Terrace**
Open Terrace to be finished with china mosaic for heat reflection & water proofing.
Pent House : rustic tiles in penthouse.



BOOKING CONTACT :
079 40371802 | 090672 10392 | 090672 10387
email : info@bkesargroup.com

SITE ADDRESS :
NR. NIRMA UNIVERSITY, S.G. HIGHWAY, AHMEDABAD.

OFFICE ADDRESS :
B KESAR GROUP, 802 SHAPATH-2, OPP. RAJPATH CLUB,
S.G. HIGHWAY ROAD, AHMEDABAD



Noties
stamp duty, registration charges, legal documentation charges, service tax, AMC/AUDA charges, maintenance deposits and AEC or QEB (turrent power) charges, shall be borne by the member separately. | Any Additional charges or duties levied by the Govt. / local authorities during or after the completion of the scheme will be borne by the member. | The project consultant / developer reserve all their rights to make changes to design or specifications of the project. | This brochure is not to be treated as a part of legal documents. It is meant for easy display and general information.



REALIZE
YOUR
DREAMS
TO LIVE IN
THE
GEOGRAPHICAL
CENTER!



www.bkesargroup.com