



LOCATION MAP :

sharan
CIRCLE
homes



defining
lifestyle here...

ORGANISER
RUSHABHDEV
infra projects pvt.ltd.
Built On Trust...

SITE ADDRESS :
ZUNDAL CIRCLE & 200' RING ROAD CORNER,
ZUNDAL, AHMEDABAD
+91 99791 11116 | +91 99781 11119 | +91 98250 05458

ARCHITECT :
HM ARCHITECTS

STRUCTURE ENG :
BHOOMI CONSULTANT

LEGAL ADVISOR :
NEHAL N SHAH ASSOCIATES



sharan CIRCLE homes

The project also features double basement parking, a useful drop zone, automatic elevators and indoor games to add to your own lavish abodes.



GROUND FLOOR PLAN

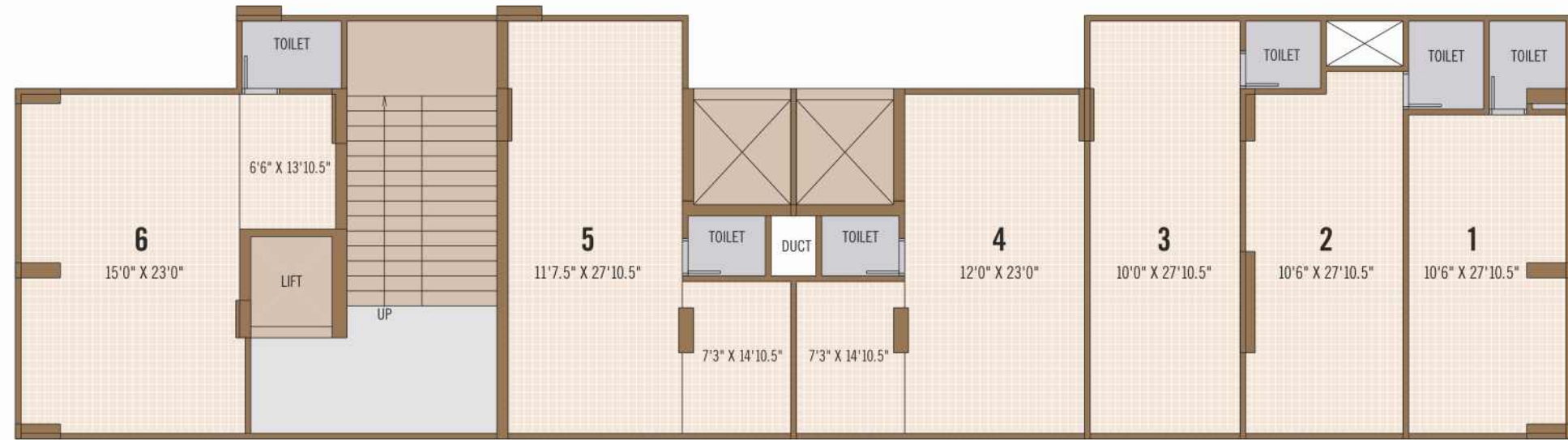


Area Of F.p. Not In Our Passion Space For Future

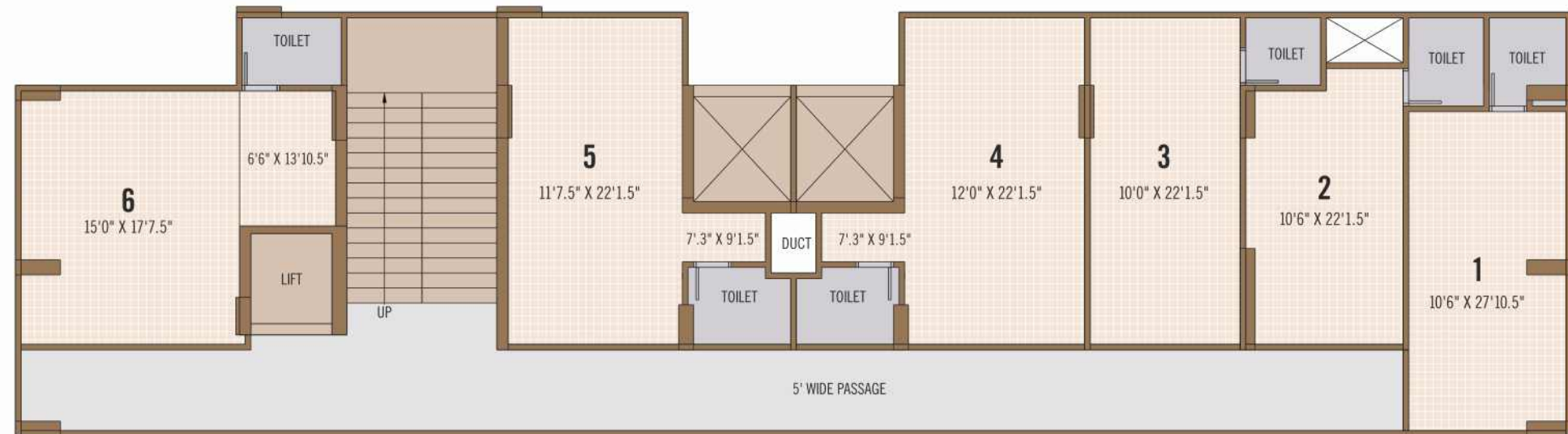
TYPICAL FLOOR PLAN



COMMERCIAL GROUND FLOOR



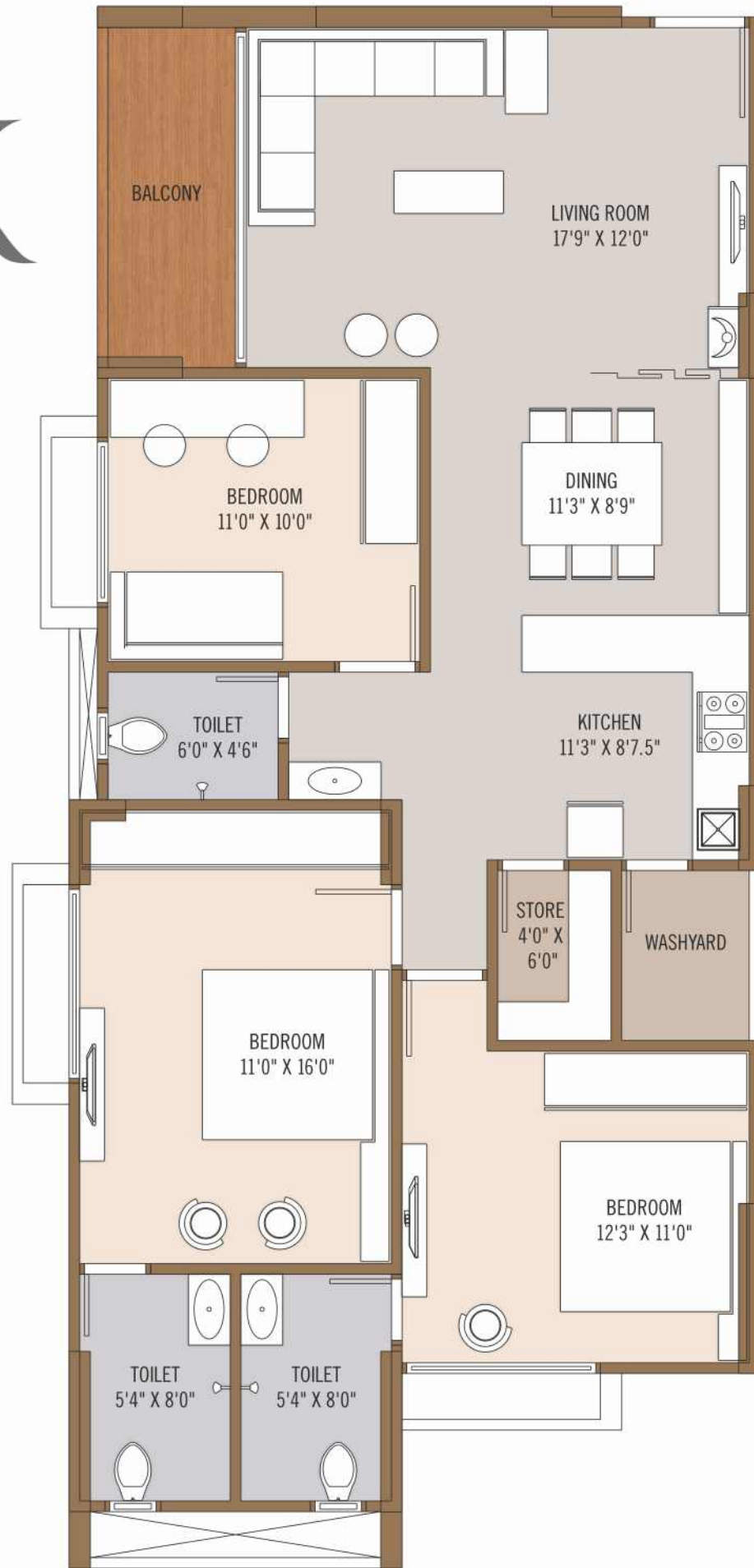
COMMERCIAL 1ST & 2ND FLOOR



3 BHK BLOCK-A,E,F



3 BHK BLOCK-A



PENT-HOUSE LOWER



PENT-HOUSE UPPER



2 BHK

BLOCK-B,C,D



RCC		Quality controlled earth quake resistant, R.C.C. frame structure.
FLOORING		Vitrified flooring in complete apartment.
KITCHEN		Mirror polished granite platform with SS sink Decorative tile dado up to lintel level.
WASH AREA		Washing machine inlet / out let in wash area. Provision for gas pipeline.
BATHROOMS		concealed / open plumbing with premium quality cp fittings.
DOORS		Main Door : flush doors with natural veneer finish. Other Doors : flush doors with laminated both side.
SECURITY		24x7 security with cctv surveillance
INTERNET		Provision for hi speed internet.
DTH		Provision Centralized DTH with MDB
WINDOWS		Fully glazed anodized aluminum windows with granite jams
ELECTRIFICATION		3 Phase concealed electric copper wiring. Premium modular switches ISI wires MCB & ELCB
PAINT		Internal walls finished with wall putty. Weather shield acrylic emulsion paint exteriors or texture
LIFT		Fully automatic high speed elevators.
PLUMBING		CPVC / UPVC hot and cold water supply pipes.
TERRACE		China mosaic with required water proofing on terrace for cool temperature.

SPECIFICATION

please note :

developers reserves the rights for alteration of specification and design. | all dimension/area are approximate average & subject to variations. | irregular payments shall cause cancellation of booking. | AMC, UGVCL, legal expenses, VAT, service tax & other GOVT charges, stamp duty & registration, maintenance charges, maintenance deposit & society membership fees shall be borne by the members. | this brochure is not to be treated as part of the legal document it is for the easy display of the project.

Disclaimer: the details, facts, specifications, figures mentioned in brochure are indicative for information purpose only and are subject to modifications/compliances required as per **RERA** Act.