



DREAM
SOLITAIRE

Plot No.103&105, Sector-19, Ulwe, Navi Mumbai.

The preciousness of a fine living...

Navi Mumbai
INTER. AIRPORT



Your Route Map To Fortunes

Navi Mumbai
METRO PROJECT

The Location

- Excellent connectivity to Palm Beach Road, Mumbai – Pune Express Highway, CBD – Belapur, Vashi, Mumbai – Goa Highway, J. N. P. T.
- 3 Minutes walkable distance from proposed Kharkopra Rly. Stn.
- 200 mtrs. from proposed Bamandongri Rly. Stn.
- 5 minutes drive from the Prop. Navi Mumbai Inter. Airport
- Banks, Markets, Hospitals, Schools, Colleges, Gardens, Play Grounds, Stadium, Railway Station, Restaurants, Hotels at proximate distance from the project site
- 200 meters away from Proposed Reliance SEZ
- 2.5 Km. away from Proposed Nhava Sheva – Sewree Sea Link
- 7 minutes drive from existing Seawood Darave – CBD Belapur



Nhava - Sheva
SEA LINK



The Project

- Clear title CIDCO transfer plot
- G+13 Storey Residential cum Commercial project
- Exclusive 1BHK & 2BHK flats with natural light & ventilation
- Quality construction with earthquake resistance RCC structure
- Excellent planning with no wastage in all rooms
- Branded High Speed Elevators
- Sufficient Car parking space on First & Second floor
- Advance & High Tech Fire Fighting System
- Power backup for Lifts & Common area
- Gymnasium with Clubhouse
- Loans available & approved by major financial institutions & banks

Gymnasium



JNPT
HIGHWAY



ULWE



Bamandongri
RLY. STN

Specifications that match your standards



The Amenities

FLOORING

- 24" X 24" Vitrified flooring in all rooms.
- Designer flooring in all toilets & terraces.

KITCHEN

- Granite Kitchen platform with S.S. Sink .
- Designer glazed tiles upto beam height
- Provision for water purifier

DOORS

- Decorative doors with wooden frame
- FRP doors in Toilet

WINDOWS

- Powder coated Aluminum sliding windows with tinted glass.

ELECTRIFICATION

- Concealed Polycab copper wiring with MCB
- Adequate electrical points in all rooms.
- ISI modular switches.
- Intercom facility for each flat.

WALLS AND PAINTS

- POP finished internal walls.
- Emulsion paints for internal walls.
- Acrylic paints for external walls.

BATH & WC

- Designer glazed tiles dado upto beam level.
- Anti skid designer flooring.
- Branded sanitary wares of reputed make.
- Quality C.P. Fittings of Plumber or equivalent.
- Provision for Exhaust Fan & Geyser.
- Concealed Plumbing.

WATER

- Underground and Overhead water tank with adequate storage capacity.
- Rainwater harvesting system.

TERRACE

- Special water proofing treatment with China Chips flooring on top floor.



Millennium

Sleep-ins

ethos

Waste

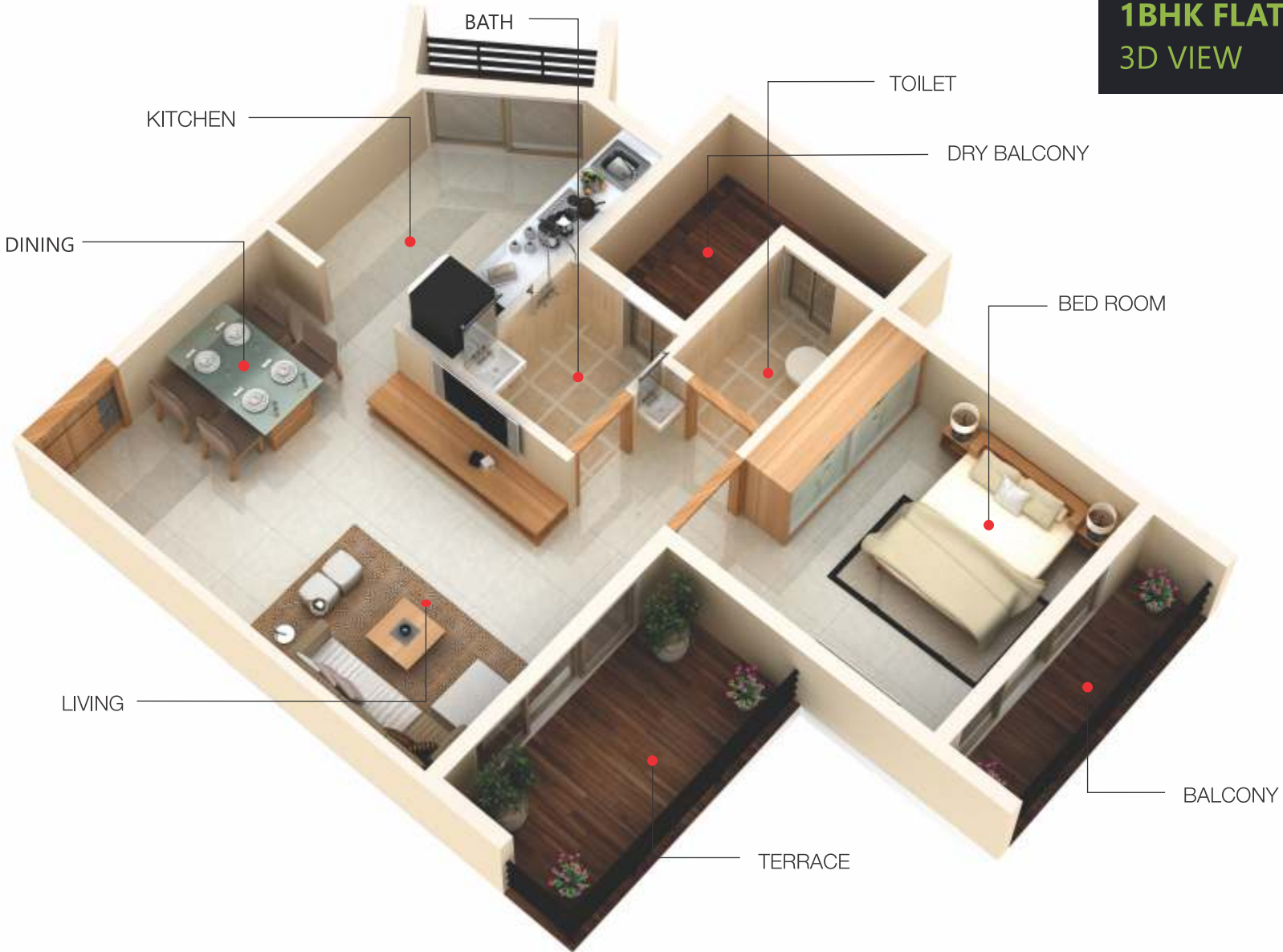
RUFF KIDS

BLUE TONIC

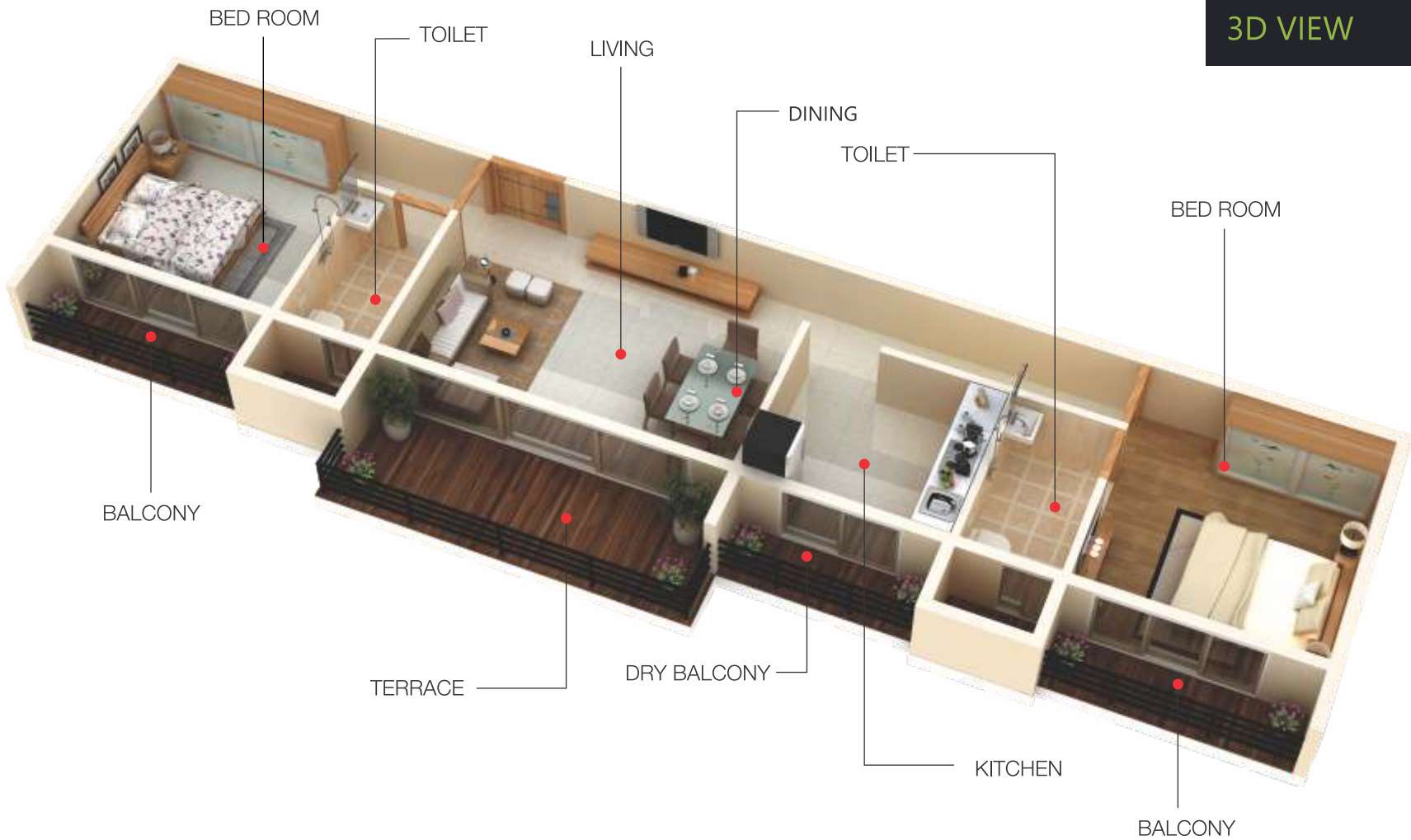
WATERBURY



1BHK FLAT
3D VIEW



2BHK FLAT
3D VIEW



GROUND FLOOR PLAN



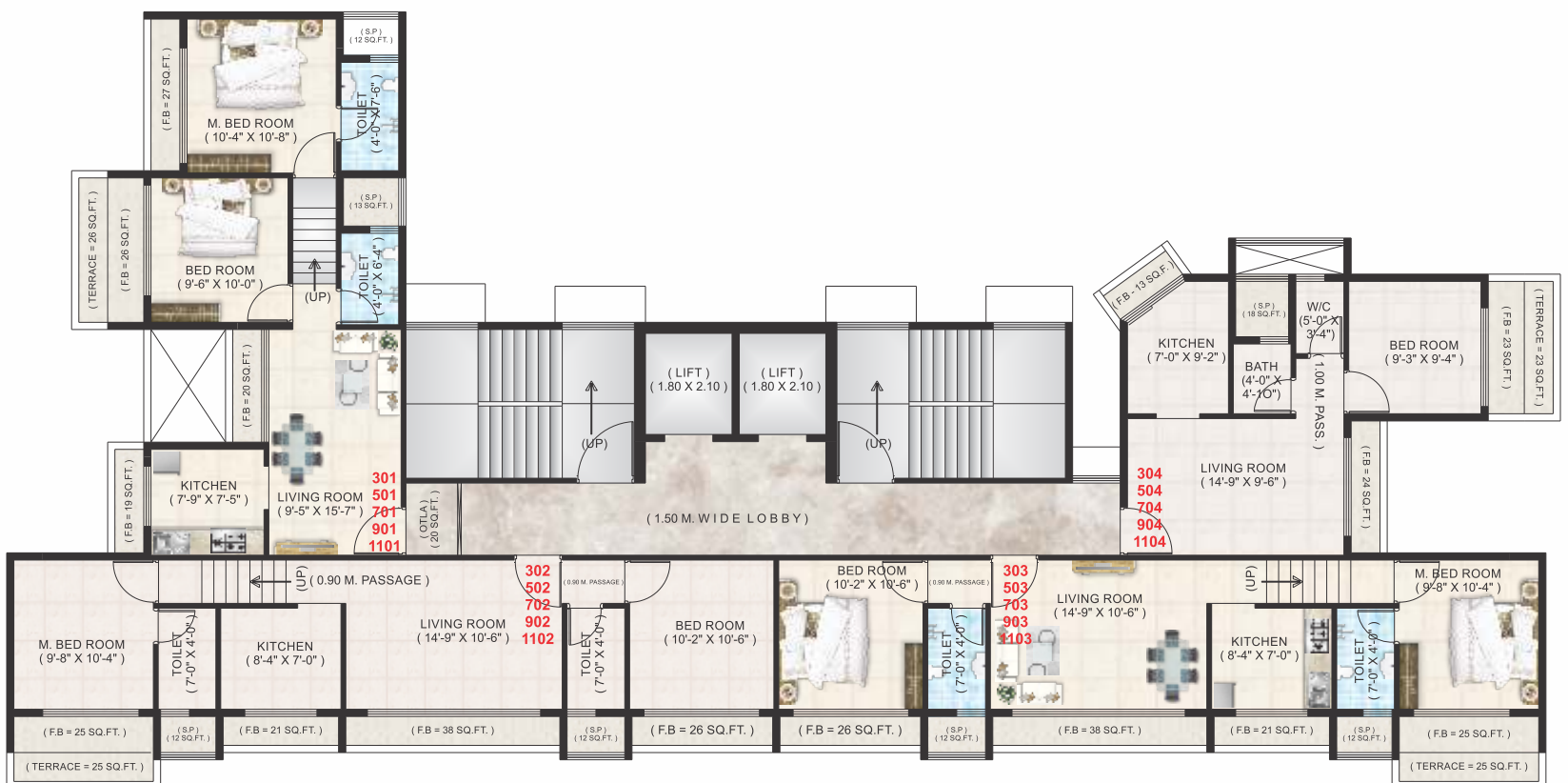
FIRST FLOOR PLAN (1st)



SECOND FLOOR PLAN (2nd)

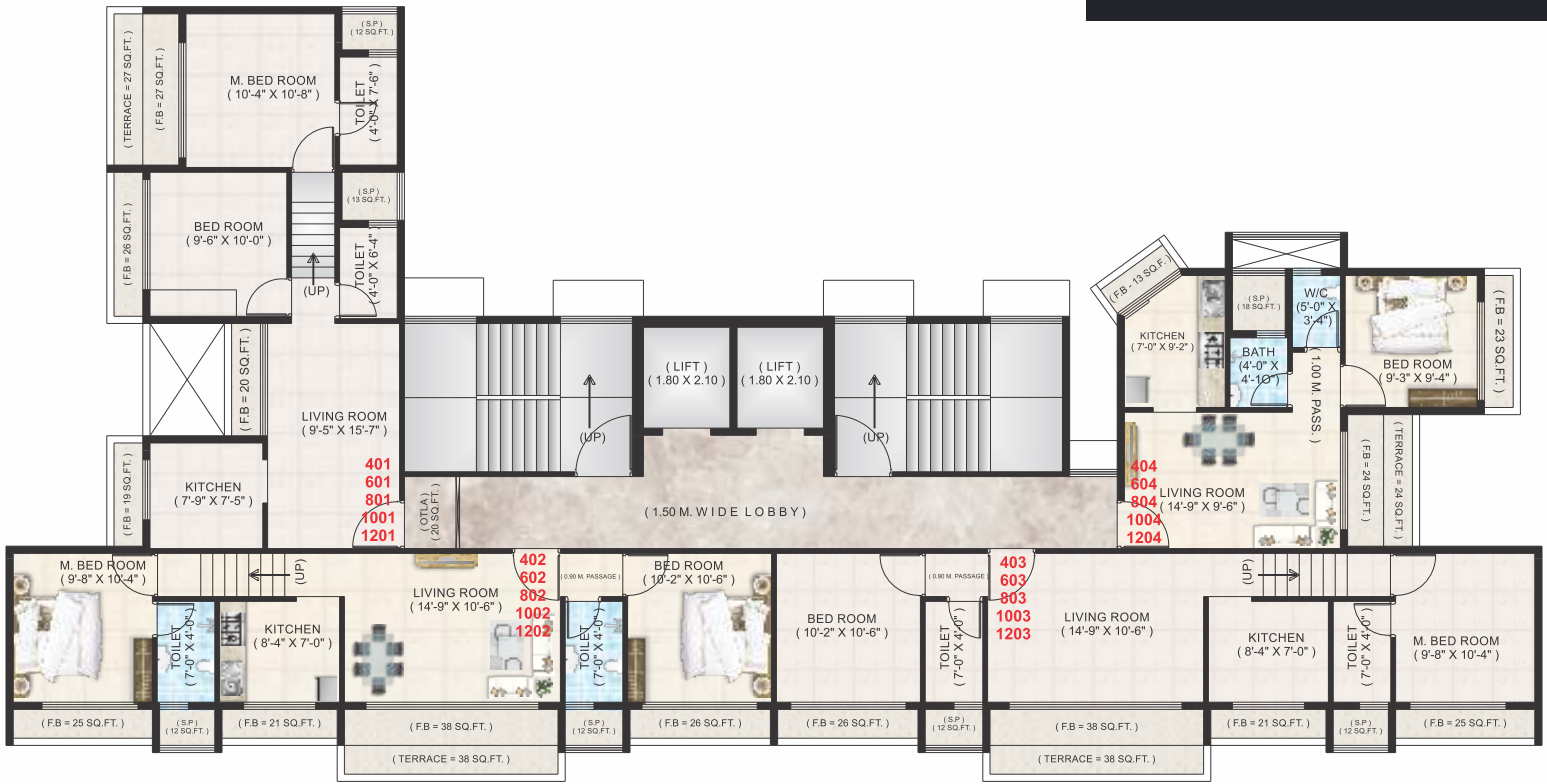


TYPICAL FLOOR PLAN (3rd, 5th, 7th, 9th, 11th)



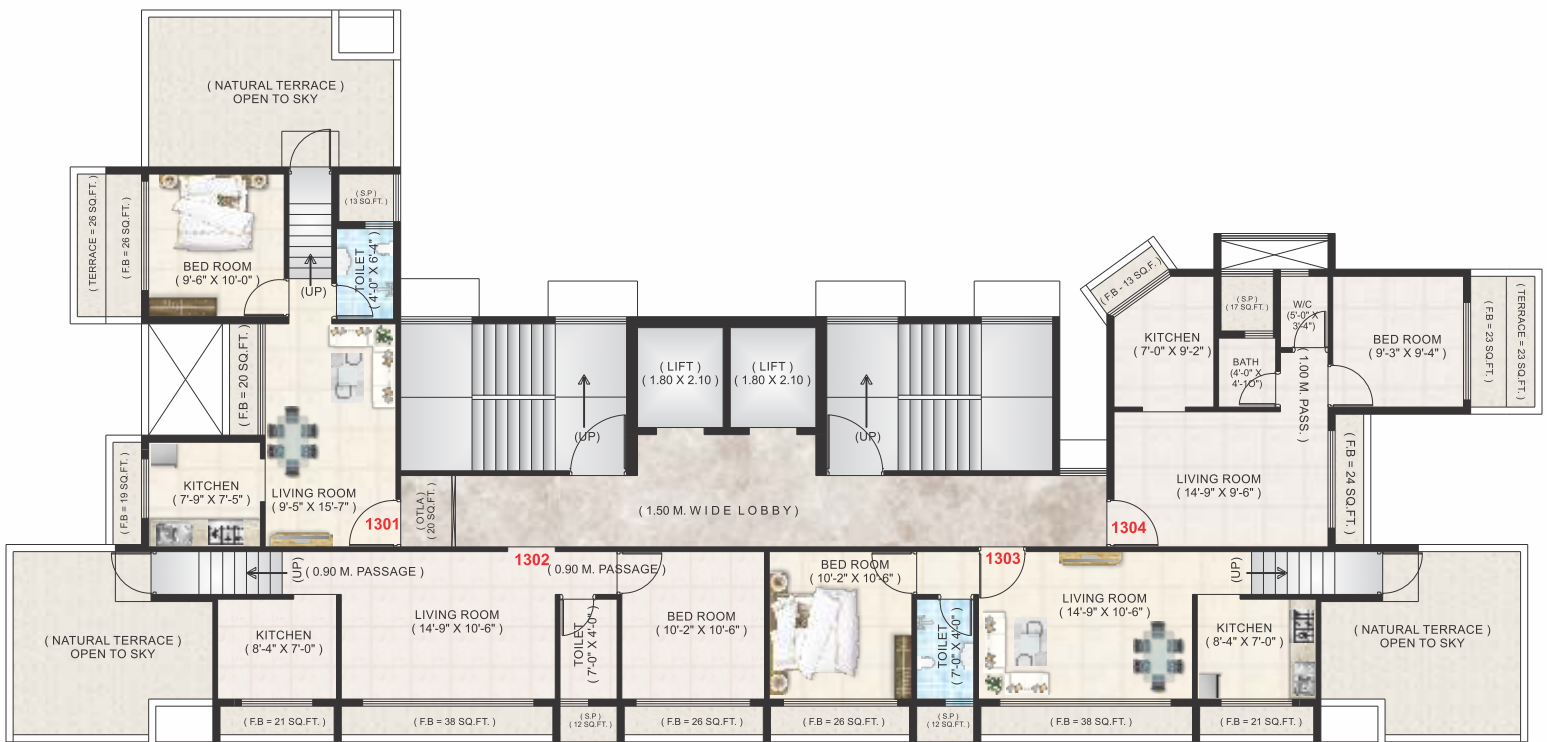
TYPICAL FLOOR PLAN

(4th, 6th, 8th, 10th, 12th)

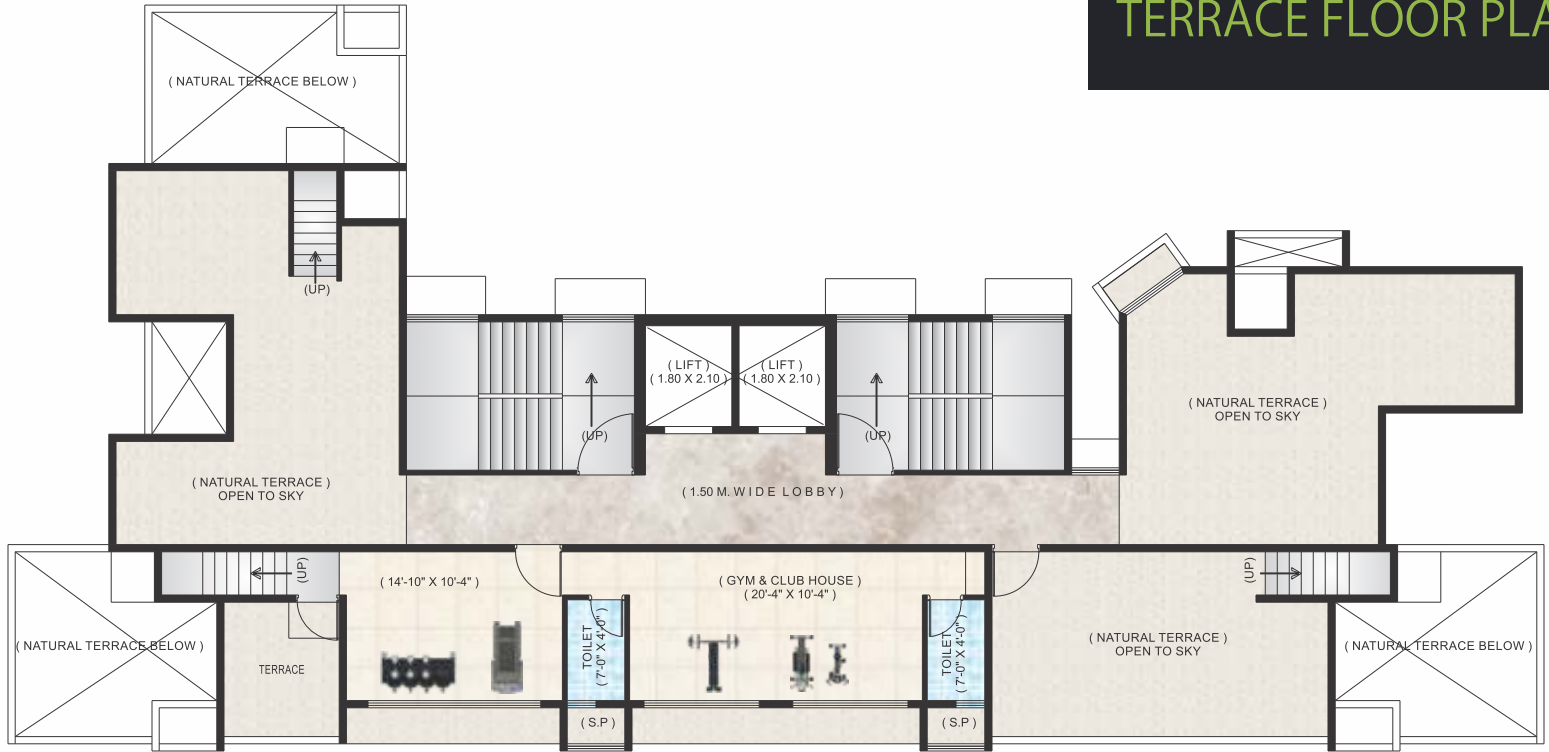


THIRTEENTH FLOOR PLAN

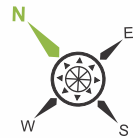
(13th)



TERRACE FLOOR PLAN



OTHERS ONGOING PROJECTS



Dream Homes

Gut. No. 109 /0, At - Vichumbe, Panvel, Navi Mumbai.



Dream Coral

Plot No.135, Sector - 02, Ulwe, Navi Mumbai.



Dream Sky

Plot No. 154, Sector - 19, Ulwe, Navi Mumbai.



Dream Sai Elegance

Plot No. 267, Sector - 17, Ulwe, Navi Mumbai.

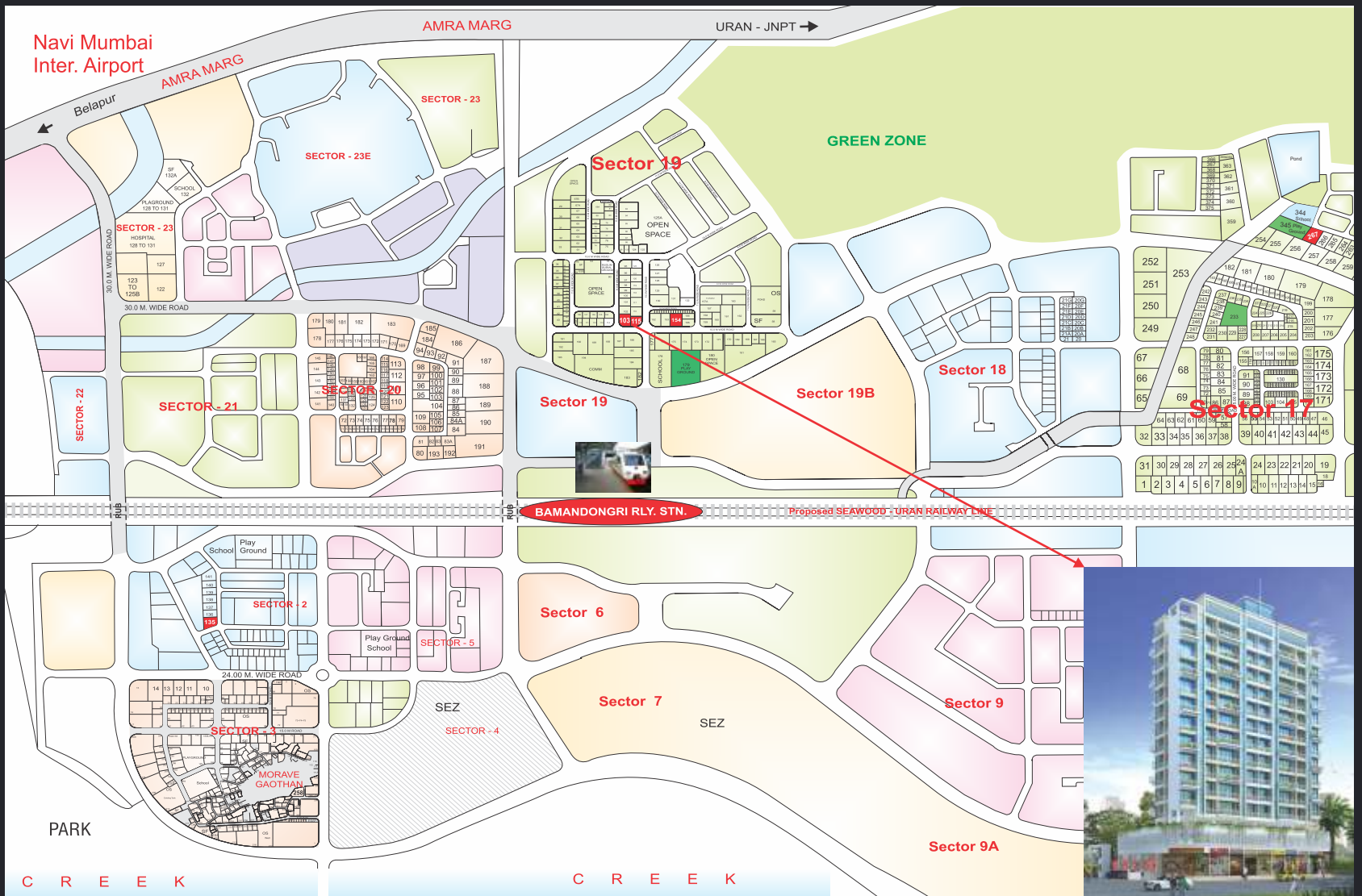


Dream Emerald

Plot No. 177, Sector - 30, Kharghar, Navi Mumbai.



LOCATION MAP



Project By

Dream Developers™

Site Office : Plot No. 103 & 105, Sector - 19, Ulwe, Navi Mumbai.

Head Office : Shop No. 2 Prajapati Gaurav Sector - 2, Plot No. 3, Nr. Siemens, Station Road, Kharghar.

Website : www.dreamdevelopers.in

Email : info@dreamdevelopers.in

For Booking Contact :

+91 98199 04050 / +91 98209 71133

Architect : D. G. SHAH & ASSOCIATES

RCC Consultant : C. S. C. CONSULTANTS

This communication is purely conceptual and is not a legal offering. It is made for only promotional purposes. The information contained in this communication is only indicative of the kind of development that is proposed and is subject to change. The developers reserve the right to make change or alterations at their sole discretion.