

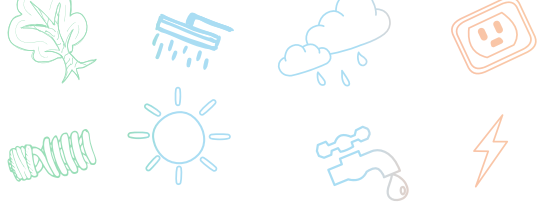


Amaranthine^{KUMARI}



Kumari Builders & Developers is the fastest growing real estate company in Bangalore committed to build homes for life. Superior Quality Detail and Perfection are the standards that KBD demands throughout its project. With each project, KBD continue to raise the bar of affordable luxury living consistently, providing unparalleled customer experience and setting land mark in affordable luxury living.





Amaranthine

KUMARI

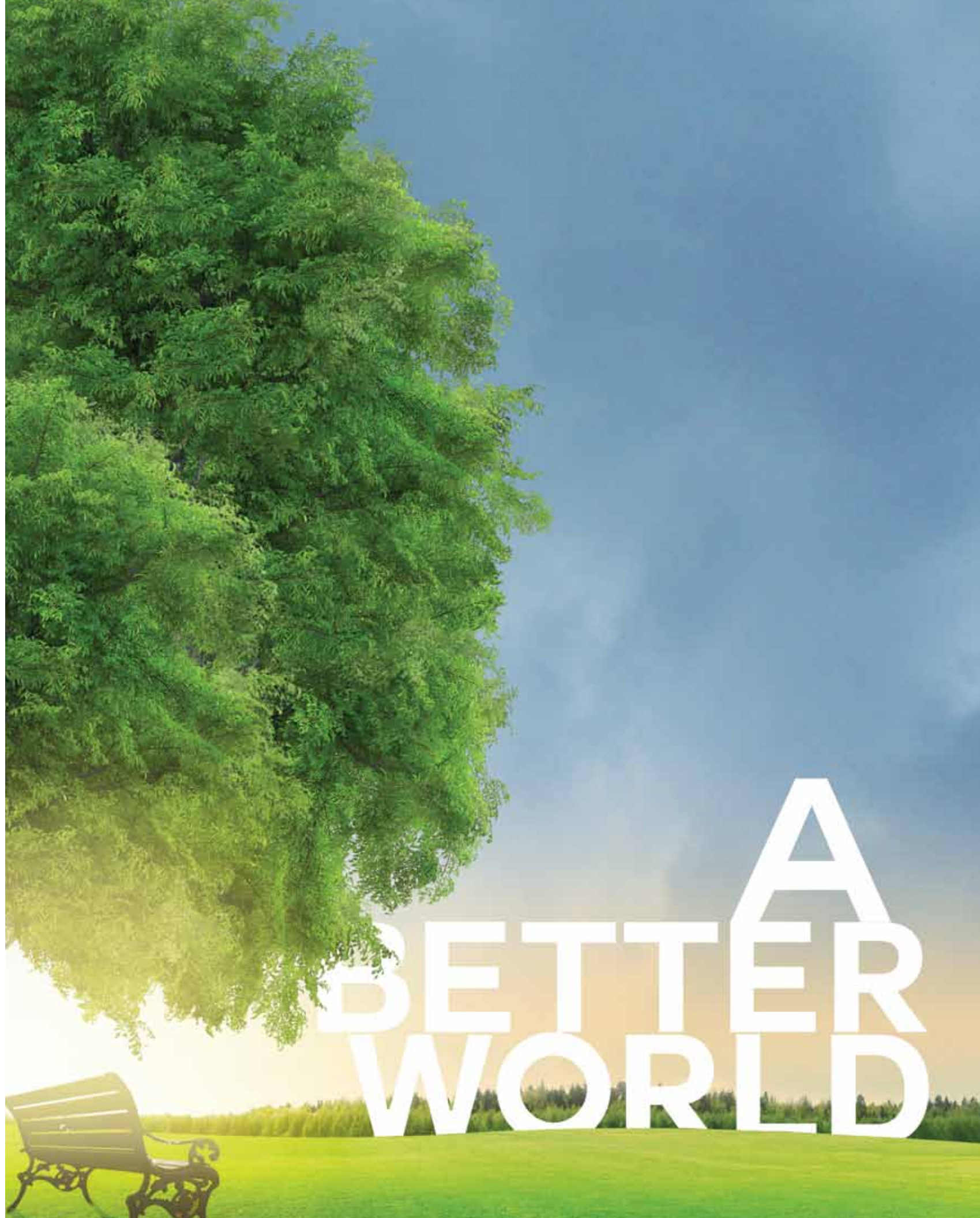


Kumari Builders & Developers presents Amaranthine to make savings a part of your lifestyle. At Amarthine, we have followed a clear direction right from beginning, the aim to reduce, reuse and recycle and that's one of the many factors that makes it a futuristic project. Amaranthine embraces nature and utilizes green technologies including solar panels, roof gardens and grey water recycling systems for effective energy, water and waste management.



FOR A GREENER YOU AND ME.

At a stage where the world today is gravitating towards "green buildings" programmed to care for the environment and occupants alike, Amarnthine made sure no stone left unturned to make it a complete sustainable ecosystem. The future-ready initiatives by Amarnthine have made the project one of the very few platinum rated projects in Bangalore by Indian Green Building Council





BE A SAVIOUR



The starting point of the planning for Amarthine was principles of sustainability and natural convenience. Cutting-edge sustainability features appear throughout the master plan and each apartment design ensures that your energy requirements are minimised and water-consumption is optimised. These measures directly translate into savings on utility bills and a healthy living environment, ensuring you do your bit for the environment as well. At Amarthine we offer quality living space that also makes you a saviour by saving the four most essential elements of life – Water, Energy, Health & Time.

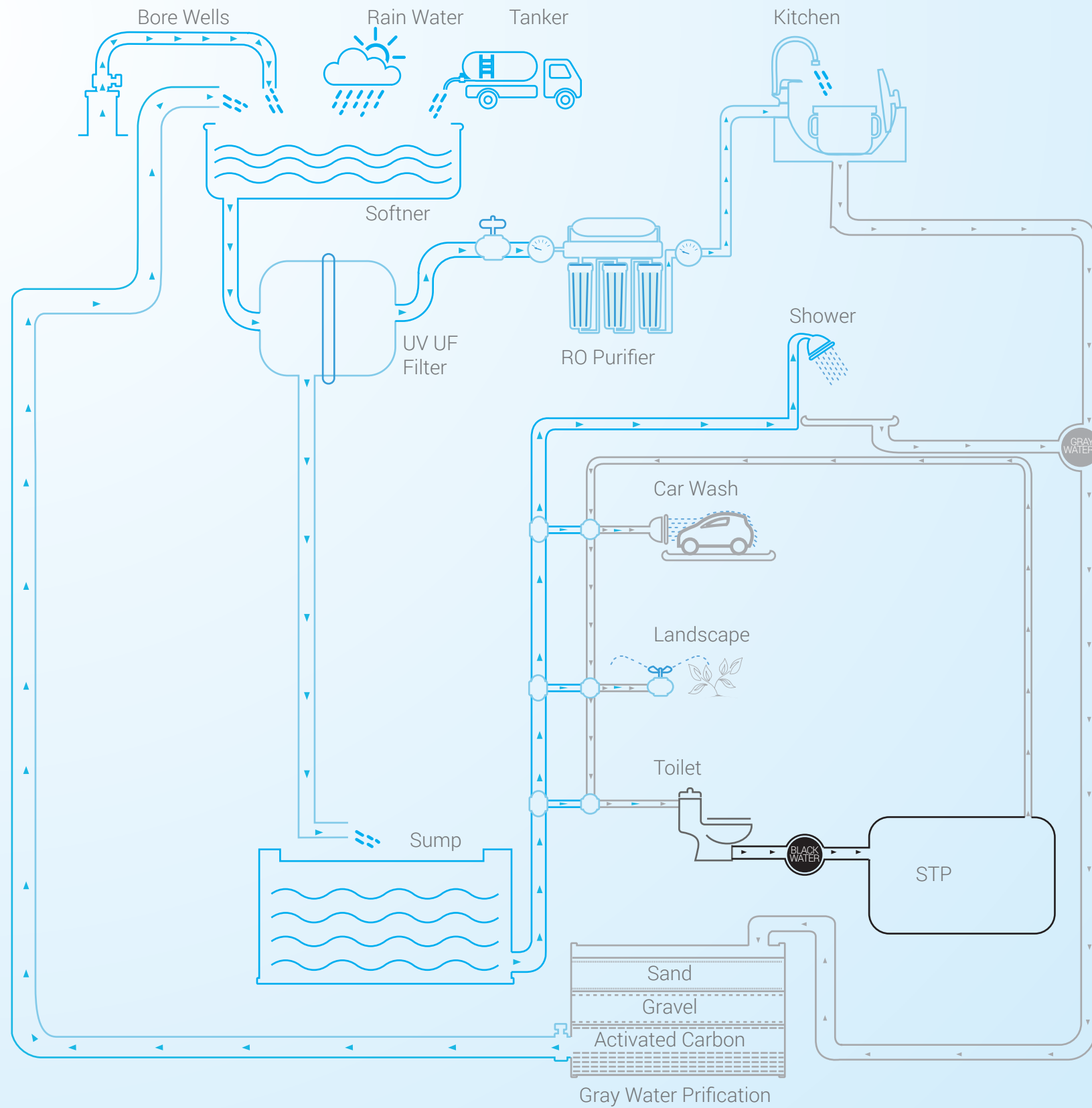


Because it means everything

Reusing and recycling water supplies is a key part of reducing the pressure on our water resources and the environment and these are the key principles of our Integrated water-recycling system. Amarnthine's water management system is one of the most complex design problems we have solved. It delivers a higher quality of water than standard systems. All the water that is supplied to your house is reused and recycled after necessary purification processes and supplied back.

SAVE WATER





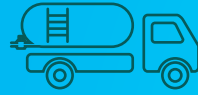
A central water softening plant conditions a variety of different water sources and pipes soft water to all taps. Drinking water is conditioned in a centralised RO and piped to every kitchen, reducing the cost and the need for any personal water purifier.



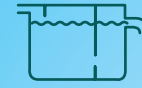
100%
Recycled water



100%
Efficient usage of
harvested rain water



80%
Reduction in
water tanker bills



90%
Pure water through
Advanced STP



Savings



50,000
Litres of water
saved every day



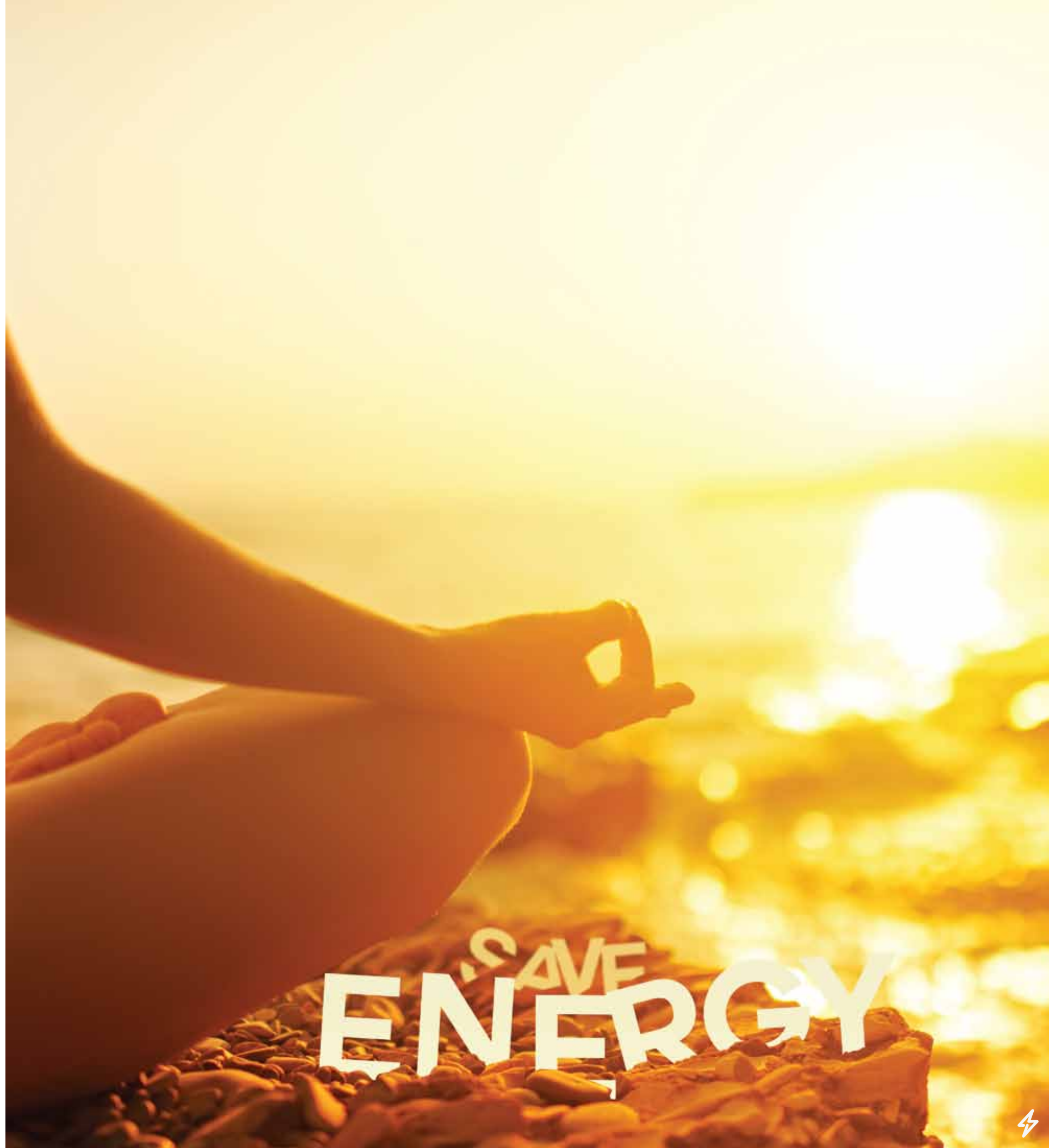
Rs.18,740/-
Saved in water
per apartment



0
Requirement for
Individual RO units

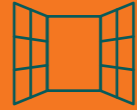
Because the light saved, is the life saved

At Amaranthine, we don't just aim to give you a better lifestyle, but also make you a better citizen for the environment. The energy-saving measures we have adopted in Amarthine helps in minimising the impact on the environment to the best extend possible. The design includes a range of energy saving materials and fittings to efficiently use the energy to provide heating and lighting in the project. The additional measures such as extra insulation, high energy performing windows, the savings have been trebled.





100%
Free & green energy
used for lighting



80%
Of heat stopped from
entering in by specially
insulated windows from
saint-gobain



70%
Reduction in A/c usage



Savings



45%
More insulation by
AAC blocks than
normal blocks



25%
Less power used
By gear-less lifts



Because health is wealth

At Amarthine Healthy Living is about making healthy choices every day; healthy choices that keep us fit physically, mentally and spiritually. The scientific evidence on the many links between housing and health has grown substantially in recent decades. Hence we have a home designed, constructed and maintained in a way that supports the health of residents. This is an integrated, systems level approach that considers the people living in the home, the structure, and the potential health hazards to prevent disease in the home.





BE THE ^{Health} SAVIOR!

At Amaranthine, health isn't constrained to the gym facility or fitness centre, health has been one of the major considerations from the construction stage itself. Proving it is not challenging by the use of our AAC blocks which is made of non-toxic ingredients helps in avoiding health hazards, as it does not exude gases, unlike the normal cement blocks. But it's not just these; our usage of low VOC paints too portrays our care for you. These paints help to reduce the concentration of contaminations in the ozone layer, ground water and landfills. Even when the paint is fresh, there is no strong odour hence the space is ready to be occupied quicker.

The water supplied at other areas of the house is also softened and passed through UV filter which deactivates bacteria. And with all these healthy features and facilities, just by living in Amaranthine you become a saviour of health.

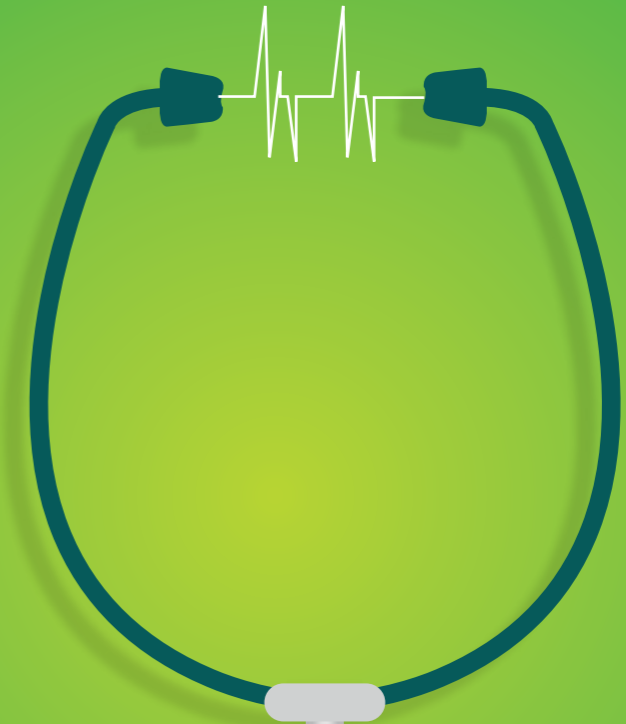




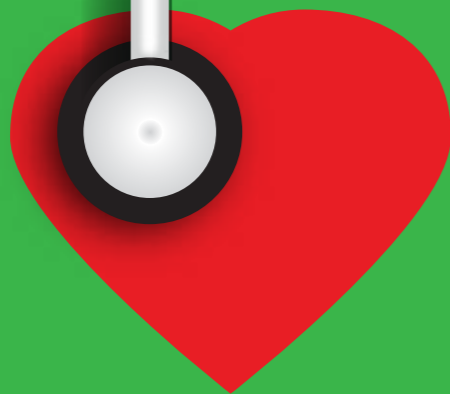
low-VOC
paint helps to reduce
allergy-causing toxins



AAC blocks
are Made of non-toxic
ingredients and Does
not exude gases.



Savings



RO unit
supplies pure drinking
water for drinking
and cooking



AAC blocks
helps prevent
condensation and
problems related
to mildew

Because we don't have much of it

Time is money and money is time, so when you have to spend an extra hour commuting to work or dropping kids to school you are essentially losing money. This time could be better spent on yourself or your family. Your children will appreciate you helping them with their homework or cheering them on at their football game. You will also have more time to get ready and catch a little more much-needed sleep. At Amarthine apart from the location advantage that you have, there are a lot of basic needs that are being taken care of so that you don't have to spend time again on that, thereby saving the most precious thing in the world.





BE THE ^{Time} SAVIOR!

One of the most basic needs for a family is that of LPG and cable connections.. Hence, to cope up with that Amaranthine with its centralised system, gives gas pipe connections at every home. Not only this, we also have provided fiber to home technology for voice and data, which means interrupted speedy internet so that you don't waste time waiting for the pages to load. At your home at Amaranthine, you can use different DTHs' without using any wiring or antennas. Here again, you need not waste time waiting for the cable connection to be set-up, making you a saviour of time by all means.

The major area where your time is saved the most is the location of Amaranthine. With its prime location behind Eco-space you can never get late to office, nor will you ever have to leave home hours before in-order to reach office on-time. Everything from offices to malls to schools to hospitals is in your reach, saving a lot of your time because we understand you don't have much of it and don't want to waste it.



OFFICE

ITPL 4km.
 GR Tech Park 3.5km.
 Brigade Tech Park 3.5km.



SHOPPING

The Forum Value Mall 4km.
 Ascendas Park Square Mall 3.5km.
 Inorbit Mall 3.5km.



SCHOOL

Whitefield Global School 4km.
 Delhi Public School 3.5km.
 VIBGYOR International School 3.5km.



HOSPITAL

Time Zone Entertainment Pvt Ltd 4km.
 Mast 7D 3.5km.
 Dream Sports Fields 3.5km.



ENTERTAINMENT

Time Zone Entertainment Pvt Ltd 4km.
 Mast 7D 3.5km.
 Dream Sports Fields 3.5km.

LOREM IPSUM

consectetur adipiscing elit, elit, sed do eiusmod tempor incididunt ut labore et dolore magna aliqua. Ut enim ad minim veniam, quis nostrud exercitation ullamco

LOREM IPSUM

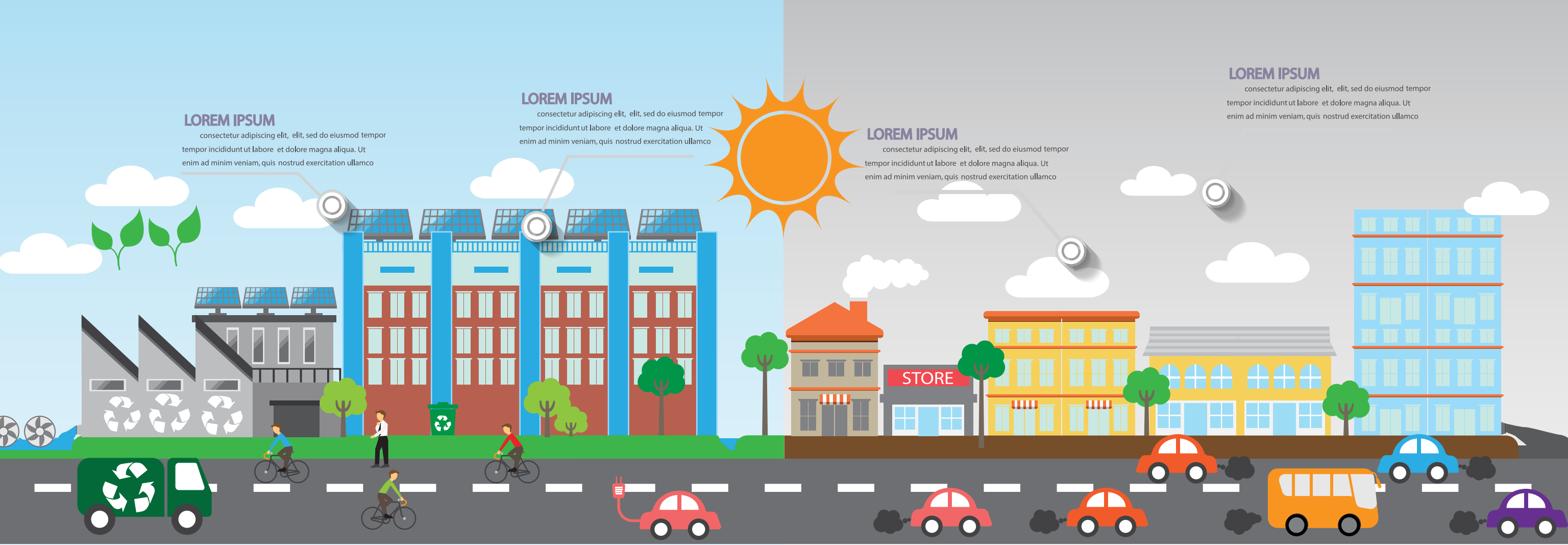
consectetur adipiscing elit, elit, sed do eiusmod tempor incididunt ut labore et dolore magna aliqua. Ut enim ad minim veniam, quis nostrud exercitation ullamco

LOREM IPSUM

consectetur adipiscing elit, elit, sed do eiusmod tempor incididunt ut labore et dolore magna aliqua. Ut enim ad minim veniam, quis nostrud exercitation ullamco

LOREM IPSUM

consectetur adipiscing elit, elit, sed do eiusmod tempor incididunt ut labore et dolore magna aliqua. Ut enim ad minim veniam, quis nostrud exercitation ullamco



40%



10%



20%

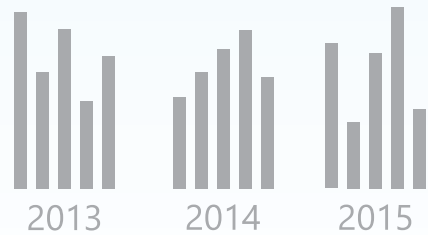


30%



LOREM IPSUM

consectetur adipiscing elit, sed do eiusmod tempor incididunt ut labore et dolore magna aliqua. Ut enim ad



LOREM IPSUM

consectetur adipiscing elit, sed do eiusmod tempor incididunt ut labore et dolore magna aliqua. Ut enim ad



LOREM IPSUM

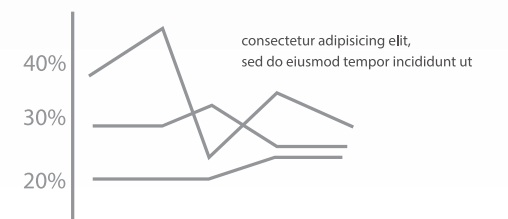
consectetur adipiscing elit, elit, sed do eiusmod tempor incididunt ut labore et dolore magna aliqua. Ut enim ad minim veniam, quis nostrud exercitation ullamco

consectetur adipiscing elit, elit, sed do eiusmod tempor incididunt ut labore et dolore magna aliqua. Ut enim ad minim veniam, quis nostrud exercitation ullamco



LOREM IPSUM

consectetur adipiscing elit, sed do eiusmod tempor incididunt ut labore et dolore magna aliqua. Ut enim ad



SPECIFICATIONS

AMINETIES



Kumari Builders and Developers
#1197, 1st Floor, 22nd Cross, 24th Main
Parangipalya, HSR Layout, Sector 2
Bangalore - 560102, Karnataka, India.
Call us: 7676 088 888
www.kumaribuilders.com

www.clearpicture.co.in

NOTE: This brochure is having only conceptual Presentation of the Project and not a Legal offering the promoters reserve the rights to make changes in plans, specifications and elevation as deemed fit.