

KOOL
HOMES presents...




galaxy
where life begins...



galaxy - a mark of difference

Exuberant, convenient and vibrant are the words that describe Galaxy, a true paradise built just for you. The contemporary lifestyle exhibited at Galaxy says volumes about its residents, unique as you, this cocoon is specially knit for you and your loved ones.



Step-up to a new
galaxy of luxury

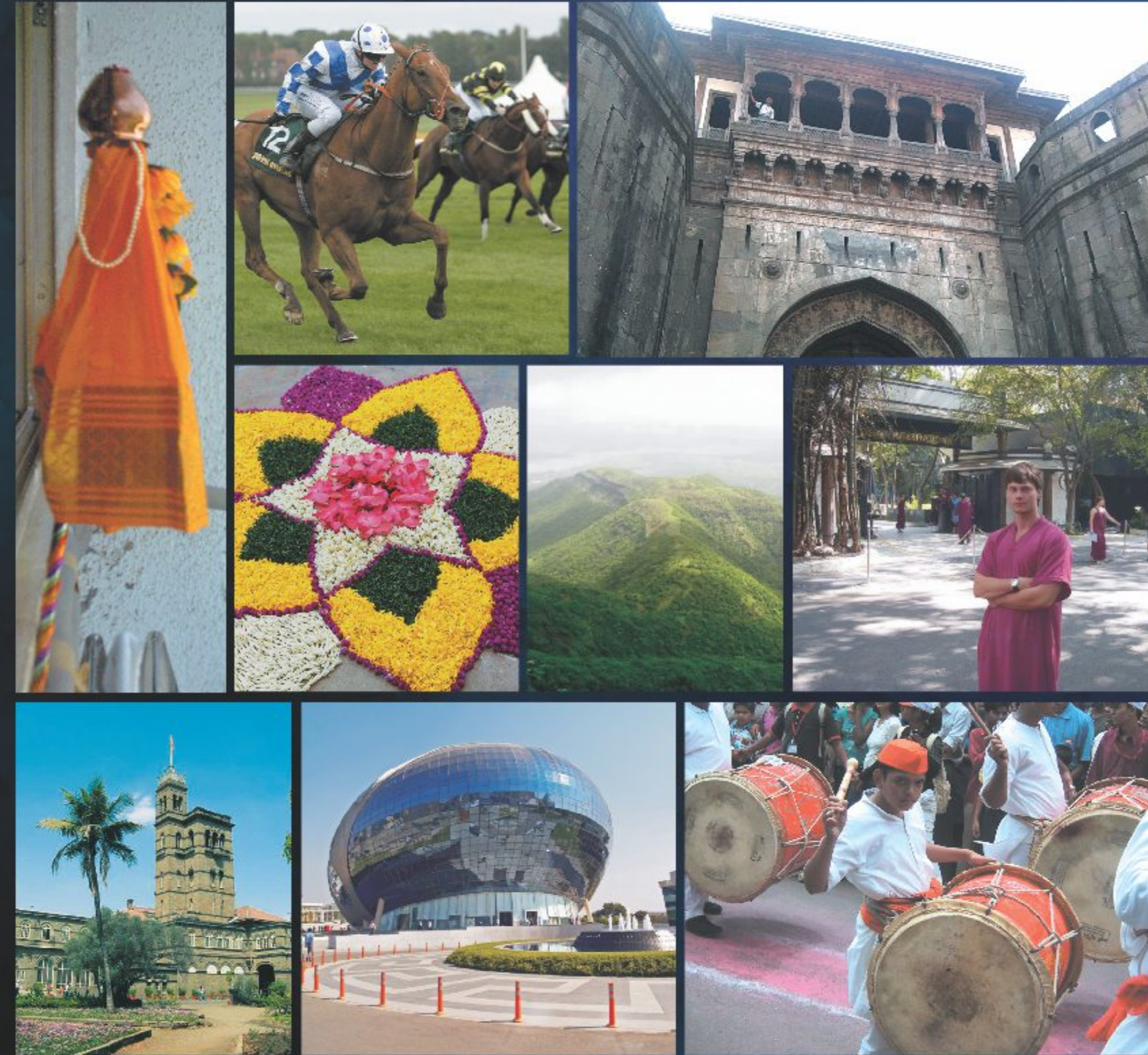
KOOL
HOMES

KOOLHOMES is a young company pioneering a revolution in the way we view housing; by creating homes that match our needs, our aspirations and our imagination. With eight on-going projects around the city of Pune, Kool Homes has carved a niche for itself with its passion to build homes that spell warmth, comforts, lifestyle and exclusive intelligent interactive technology. Kool Homes has always passionately endeavored to provide its patrons with ingenious living spaces and has always been enthusiastic about being a part of innovative projects. They are the pioneers to introduce Pune to tech-savvy homes.

galaxy

Glittering stars, the glory days of yore, high flying lifestyles and more, Galaxy homes are sure to stun you with its brilliant designs, that will cast a spell on you and will leave you in an ecstatic trance creating a picture of regality that is enduring with its appeal.





Location

If the setting is perfect, the location is sublime. Galaxy boasts of a unique atmosphere relaxed, idyllic life right in the heart of Pune. With lush, leafy and wealthy green spaces, it is little wonder and one of the most sought after living destination in Pune.

Located close to Nal stop, with an easy access to important business centers and a close proximity to shopping malls, multiplexes and hospitals you have the best of both the worlds at your doorstep.

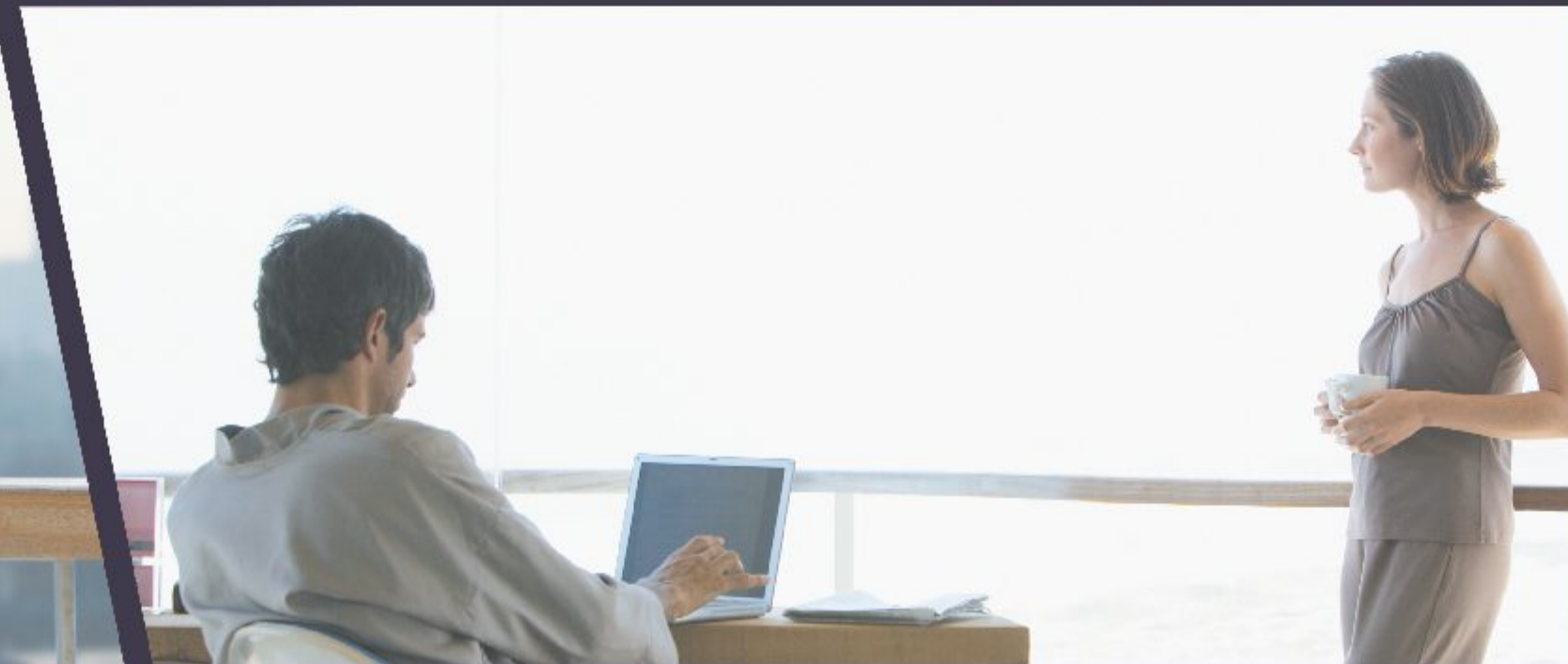


Elegantly designed homes just like the one in your dreams.

Picture perfect

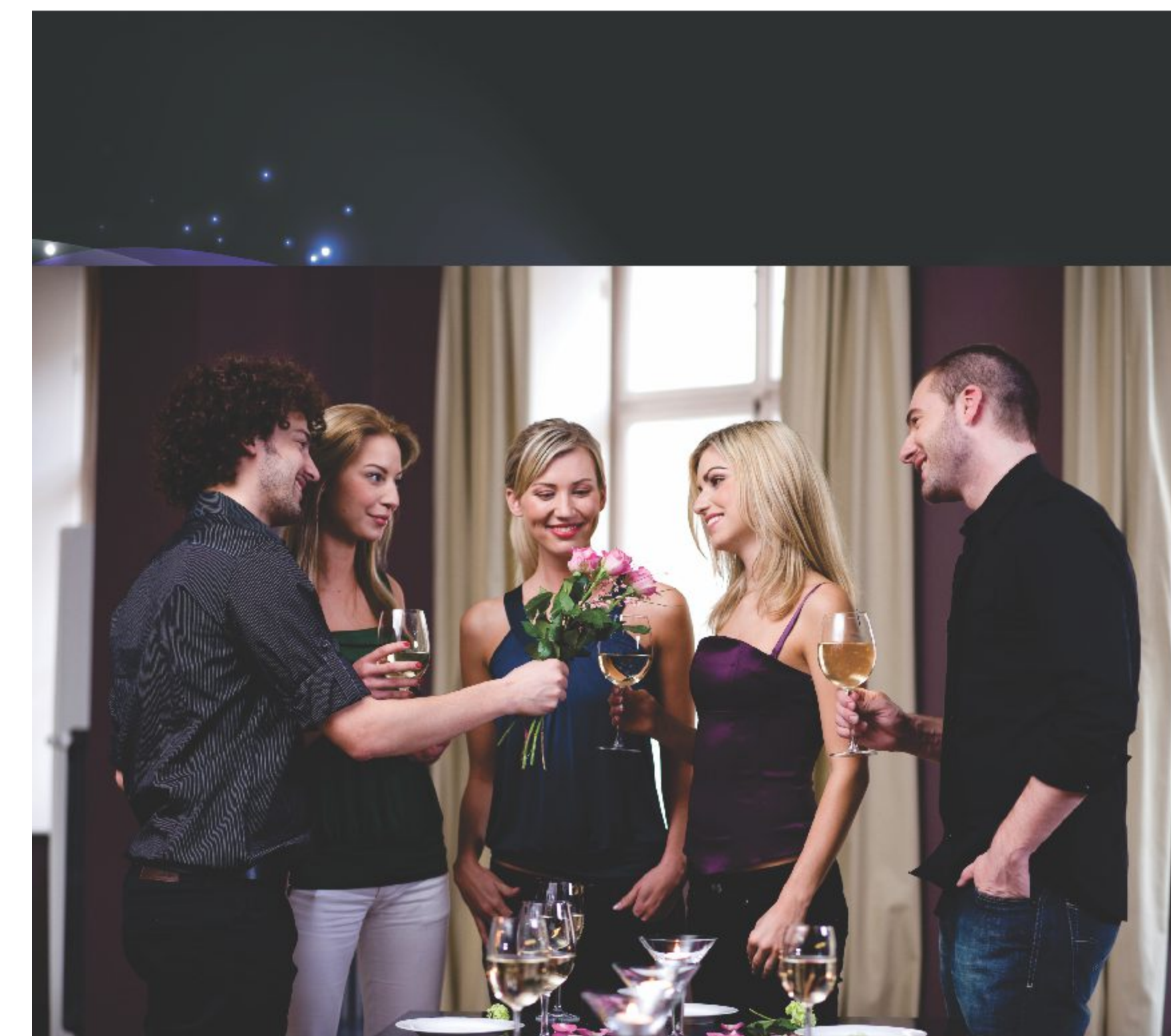
Architraves whisper. Walls breathe. Where light spreads its wings. Its free like an idea. Strong willed yet malleable. Perforated yet seamless. Galaxy homes are like picture postcard, so compelling that once you set your eyes on it, you become a part of it & the same becomes a part of you too.





All that you wished for

Galaxy offers you the exhilaration and vibrancy of a chic, urban lifestyle together with all the advantages of community living. Enjoy the community gatherings at the Party hall or quiet evenings at the tranquil spaces. A stroll around the landscaped pathways, basking in the evergreen surroundings with trickling water features will surely delight you.



Each day is a celebration here

Names, faces, people and places none would hold meaning without an image that captures it's essence.

Make the image infinite... choose to live in a world where celebration is a moment-to-moment experience.

live an experience.

ENTRANCE PARKING
PARTY LAWN
STAGE / SKATING RINK
BASKET BALL COURT
CHILDREN PLAY COURT
SWIMMING POOL
KIDS POOL
JACUZZI
SUN DECK
WATER CASCADE
CLUB HOUSE
RAIN SHOWER
PARTY GATEWAY
AMPHITHEATER
VIEWING DECK
SENIOR CITIZEN PARK
THE 'Z' POINT
FLOOR CHESS
BADMINTON COURT
SNAKES & LADDERS
SEATING AREA
CLIMBING WALL

Facilities & Amenities

Layout Plan



A + B = Residential Towers C = Commercial Tower



galaxy
where life begins...

*The perfect address
the essence of fine living*

Sunlight streaming through the windows, a room with vistas weaved in the blanket of opulence, an inviting space draped in peaceful environ. Perhaps it was this yearning for peace & solitude, for the sound of green leaves swishing over so gently in the breeze, for sight of shining stars resting with pride in the bright blue skies that prompted us to create this amicable piece of masterpiece for you.

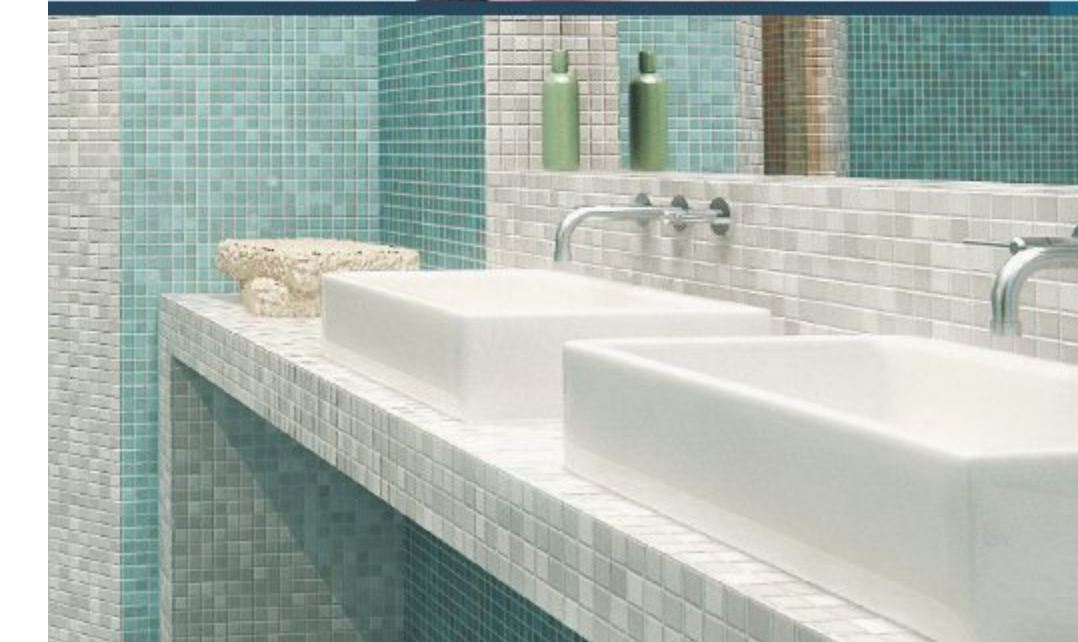
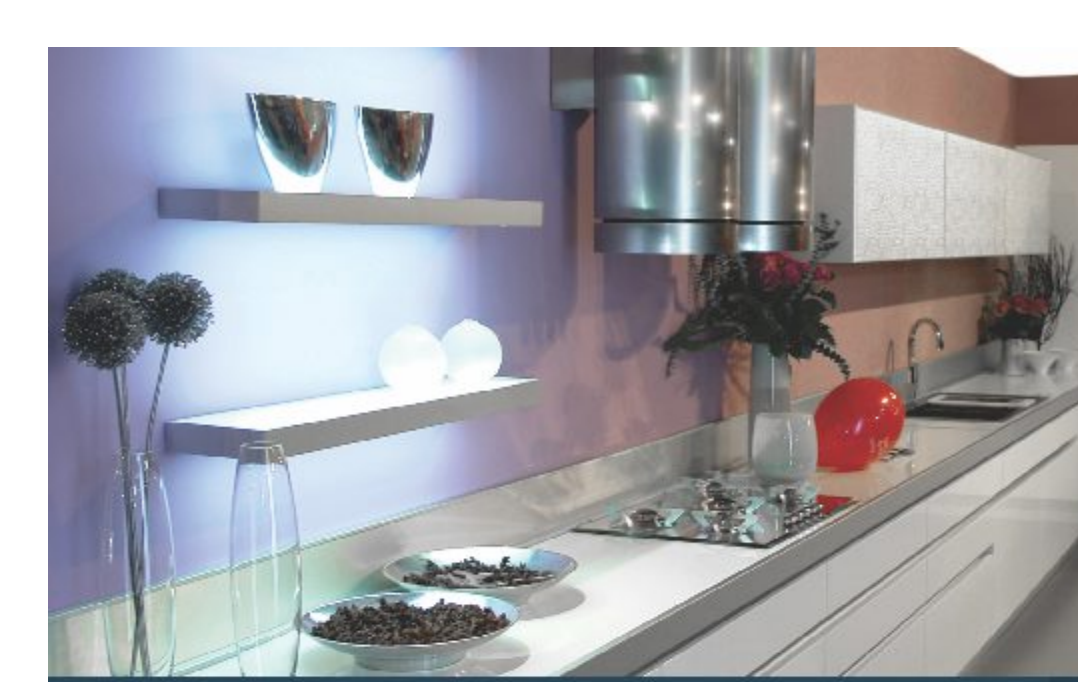




galaxy
where life begins...

Your Galaxy

Luxuries laid on carpet, space welcoming you with open arms, there is no better place than Galaxy to call home. Gift your family an unparalleled and secure lifestyle. With avant garde construction , high design standards , exclusive amenities and services, Galaxy is the choice you have been waiting for long.



A perfect world

Generous dimensions, exquisite detailing and traditional craftsmanship come as standard within the apartments in Galaxy. Each individual apartment enjoys its own identity and all are finished to an exceptionally high standard exuding a real sense of authenticity and luxury.

Specifications

The milky way Specifications

APARTMENT SPECIFICATIONS

LIVING

- Elegant main door with polished veneer on both sides
- Flooring of 3'x3' vitrified tiles with skirting
- Anti-skid tiles for terraces
- Internal walls with smooth gypsum finish and highly finished QBD/acrylic paint
- Anodized aluminum/UPVC sliding doors and windows with designers grills
- Branded modular electrical fittings
- Extensive electrical layout
- Mood lighting with HAP

BEDROOM

- 2'x2' vitrified tiles with skirting for other bedrooms
- Laminated wooden flooring in Master bedroom
- Motorized curtains/Mechanical louvers in Master bedroom
- Pre-fitted split air conditioner in Master bedroom with automation
- Flushed laminated doors

KITCHEN

- Kitchen platform with granite top
- Glazed Dado tiles up to 4'0"ht
- S.S. kitchen sink with double bowl
- Extensive electrical layout for kitchen convenience
- Provisions for water purifier, hob & chimney

UTILITY AREA

- Clothes liner in dry balcony
- Glazed / Dado tiles up to all level
- Provisions for washing machine and dish washer in dry balcony

WASHROOMS

- Select glazed /ceramic tile up to lintel levels
- Stone /granite door and window jambs
- Counter Basins with Granite for all toilets
- Single lever sanitary fittings
- Branded sanitary ware
- Distinct wet and dry area in toilets

KEYLESS ENTRIES TO EVERY APARTMENT

- Addressable Fire Alarm System (AFAS) AFAS is provided for common lobbies of the flat owner to integrate with the main panel
- Visitor Tracking System (SURVEILLANCE) Surveillance system is provided for the parking and common lobby for building with recoding on PC
- Energy saving system
- PIR sensors are provided for basement parking and common lobbies of the buildings to control lights

ACCESS CONTROL SYSTEM (ACS)

- ACS is provided for individual flats.
- Fire Fighting Systems (FFS)
- FFS is provided which covers common lobby parking & periphery of the building (External Protection)

TECHNOLOGY FOR GREEN LIVING

- Home Automation System(HAS) HAS is provided for the individual flats and it has panel which has following features and application
- Be controlled from any part of the world through phone /sms

- Automatic arming & Disarming by Timers
- Inbuilt Answering machine and voice mail
- Different codes for different authority levels
- Autodialled facility and can dial upto 8nos
- Day and night mode

ELECTRICALS

- Concealed, fire resistant high quality copper wiring
- Ample light points with modular switches
- TV/ Cable points in living and all bedrooms
- Telephone point in living and all bedrooms
- Provision of exhaust fan in kitchen and toilets
- Earth leakage circuit breaker
- Data cable provision

CAMPUS SPECIFICATIONS

- Serenity is priceless. For Koelhamers, serenity begins at Kool club. Step into the exclusive lobby & the immediate impression is one of a cool understated elegance crafted in glass and steel and adorned with contemporary art. It is a masterpiece by itself.

- Anti termite treatment
- Seismic Resistant building design
- Mood Lighting for landscapes and building facades
- Concrete/paved internal roads
- Wi-Fi connectivity
- Visitor Tracking System/Surveillance
- Guard tour system

- Digital Surveillance System
- Addressable fire fighting systems
- Plumbing and water management
- Water treatment plant
- Laundromat Service
- Car wash facility

LANDSCAPE

- Spectacular landscaped area with sparkling water bodies and fountains
- Landscaped Amphitheater
- Half basket ball court
- Skating rink
- Reflexology path
- Senior citizen relaxing area
- Children play area
- Automatic sprinkler and drip irrigation system

CLUB HOUSE

- Furnished club house with multi purpose hall
- Equipped gymnasium
- Yoga / Aerobic room
- Steam and Jacuzzi facilities
- Indoor games like Table Tennis, Pool, Carrom
- Society office

SWIMMING POOL

- Innovatively designed water lit pool with paved deck
- Kids pool
- Changing and wash rooms
- Electronic perimeter fencing

BUILDING SPECIFICATIONS

- External sand faced plaster
- Durable exterior painting
- Thermal insulation treatment for roof terraces
- Entrance lounge for every building
- Designer lobby at every floor
- Podium and still car parking
- Fire fighting system
- BMS room and server room
- Anti termite treatment

BUILDING FEATURES

- Smoke detectors with automated alarm systems for common areas & lobbies
- Music and public Address systems for common lobbies and areas
- Solar water heating system for all apartments.
- Centralized LPG through pipeline
- Garbage chute
- Automatic high speed lifts (2no.8 passenger & 1no. Jumbo 17 passengers /stretcher lift
- 100% power backup for common utilities
- Smoke ,fire ,gas leak detectors with automatic alarm system for common areas
- Broad band internet connectivity
- Multi function electronic intercom security system with panic button
- Pressurized water supply system
- Sanitation facilities to drivers, servants and society staff
- Energy saving lamps for common areas
- Bio compost pits

Luxuries

FORMAL LIVING

FORMAL DINING

MINI THEATER

DISC

POOL TABLE

VIDEO GAMING

BUSINESS CENTER

LIBRARY

PANTRY

LAUNDROMATTE



Pantry



Formal Dinning



Formal Living



Disc



Pool Table



Video Gaming



Library

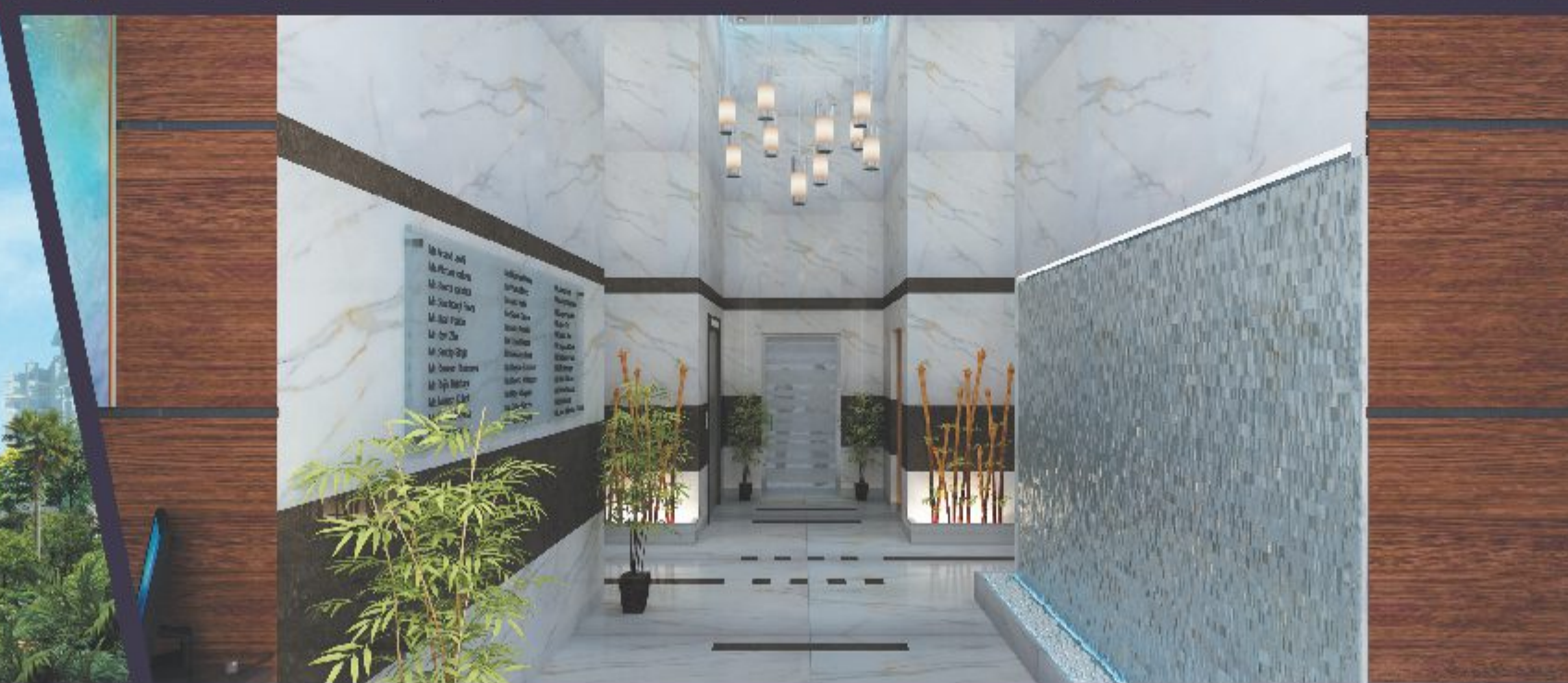


Business Center



Mini Theatre

@ZeroLevel



galaxy
where life begins...

A Splendid Universe

Galaxy is an ultimate calling card for the cosmopolitan resident wanting a high brow and avant garde lifestyle. From the lobby to the bedroom, Galaxy exudes an ambience of a contemporary tropical resort within verdant surroundings for optimum comfort in style.



Architect Kavita Gathani, Design Director at Kool Homes, believes in reflective design to create a totally integrated project with a modernist approach. Her fine balance of form to function with a contemporary expression leaves an individualistic impression.

Her flair for colors adds a sense of purism and elegance to spaces. She has conceptualized, designed and executed a wide range of projects from small offices to large showrooms and from residential interiors to personalized homes in her first few years.

As a Creative Director to Kool Homes, a property development company in the past few years she has launched number of residential and commercial projects with a personal touch to comfortable livable spaces with exquisite detailing and energy efficient integrated design.

“There are three forms of visual art:
Painting is art to look at, sculpture is art
you can walk around, and architecture
is art you can walk through”

Dan Rice

Credits

DESIGN ARCHITECT

Kriti Architects

LANDSCAPE ARCHITECT

Shobha Bhopatkar

SOFTWARE CONSULTANT

Ethix Software Solutions Pvt.Ltd.

STRUCTURAL CONSULTANT

J+W Consultants LLP

SERVICE DESIGN CONSULTANT

Milind Ghate (Electrical)
Unicorn Engineers (Plumbing & Sanitation)

COMMUNICATION PARTNER

Square One Media Solution Pvt.Ltd.

PROMOTERS

Koolhomes
Galani Group
Shewani Properties

Contact

SITE ADDRESS

Residential Complex, On S. No. 5 at Mahtre Bridge, Pune
Tel.: +91 9225531108 / 09

CORPORATE OFFICE

Ethix House, 3, Castellino Road, Near Golibar Maidan, Camp, Pune - 411001, India
Tel.: +91 020 64006060 / 64006448

MUMBAI OFFICE

A-5, Everest Bldg., Tardeo (W), Mumbai -400034, India
Tel.: +91 022 23512447, 32920456

Email- info@koolhomes.in | Web.: www.koolhomes.in

All Rights Reserved

No part of this brochure will be reproduced, stored or transmitted in any form or by any means, electronic or mechanical, including photocopy or recording on any other information storage or retrieval system, without the written permission of Square One Media Solution Pvt.Ltd.
Brochure Concept, Design & 3D Imagery: Square One Media Solution Pvt.Ltd. 163, MC Road, Pune

This brochure is purely conceptual and not a legal offering. The developer reserves all the rights to add, delete, alter any detail, specifications, elevation mentioned herein. The brochure is indicative of how the furniture can be arranged in the residential unit. No furniture is to be supplied to the purchaser by the developer unless otherwise mentioned. All images, unless otherwise indicated are used for illustrative purpose only.