



It's a touch of

Class & comfort



Aashirwad Heights

k o t h a p e t

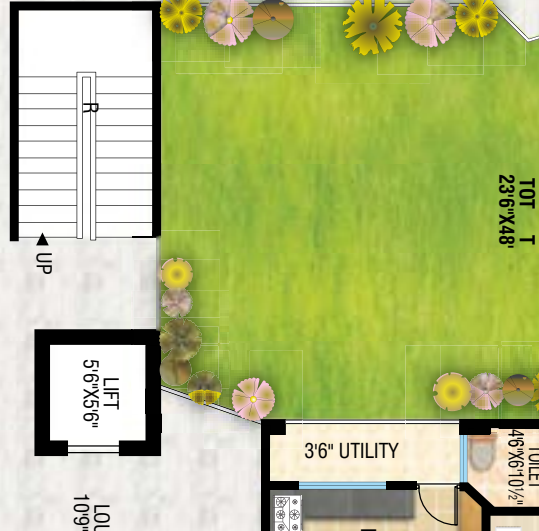
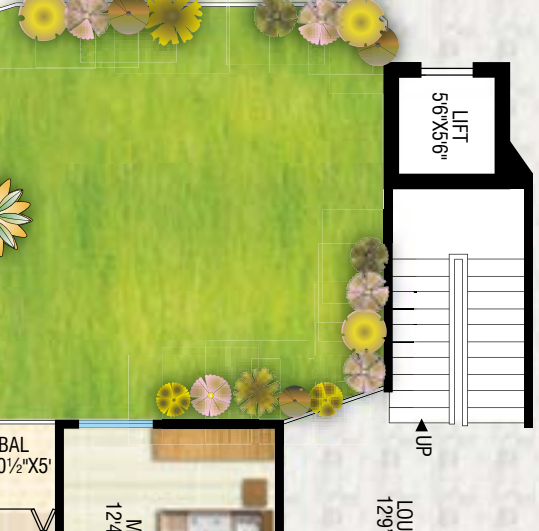
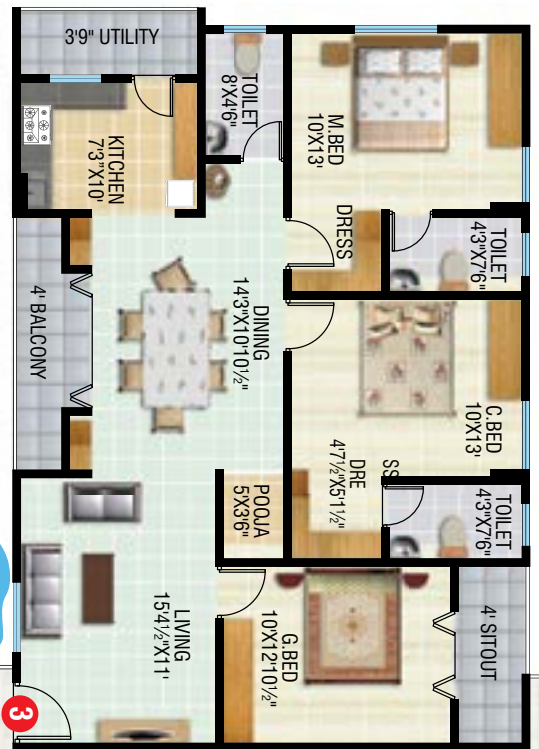
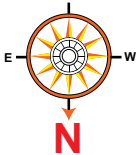


A marvel in architectural style that makes a statement of excellence through simplicity.

Indulge yourself in contemporary lifestyle at **Aashirwad Heights**, an experience that turns up the volume on stately living. At this venture, you can feel the birth of a superiorly aesthetic space with a combination of quality and design. A prime example of masterfully crafted designs with a blend of urban sophistication and the well defined interiors give the venture a classic look. You can simply settle into the lively ambience and cherish the happy moments of relaxing contemplation.



Typical Floor Plan



30 WIDE EAST ROAD

30 WIDE WEST ROAD

Specifications

- ▶ **Frame** :
RCC, In 53 grade cement.
- ▶ **Super Structure** :
Light weight CLC blocks. / Light weight mud bricks.
- ▶ **Plastering** :
2 coat sponge finish plastering.
- ▶ **Doors** :
MT wood frames for all doors and windows.
- ▶ **Main door** :
MT wood frames with melamine polish both sides
- ▶ **Other doors** :
WP flush doors with both sides laminate.
- ▶ **Windows** :
MT wood / powder coated aluminium window shutters with safety grills.
- ▶ **Electrical** :
Branded wiring with modular switches and provision for A/c in one master bedroom and geyser connection in all toilets.
- ▶ **Flooring** :
Branded vitrified tiles for entire flat with 4" skirting.
- ▶ **Painting** :
Luppam finish with acrylic emulsion in entire flat, weather proof paints for external walls and smooth enamel paint for grills & all wooden surfaces.
- ▶ **Hardware** :
Standard aluminium SS hardware for all doors and windows.
- ▶ **Kitchen** :
Granite slab cooking platform with stainless steel sink and 3' height tile dado, power points for oven & Aqua-guard.
- ▶ **Toilets** :
EWC with flush tank and wash basin in each toilet and branded ceramic tiles dado upto door height and anti skid tile flooring.
- ▶ **Drainage** :
PVC pipes of Prince/ Sudhakar brand for all drainage pipes.
- ▶ **Water Pipes** :
CPVC concealed pipe line with branded CP fittings and one drinking water connection in the kitchen sink.
- ▶ **Lifts** :
2 no. 6 passenger lifts.

Amenities

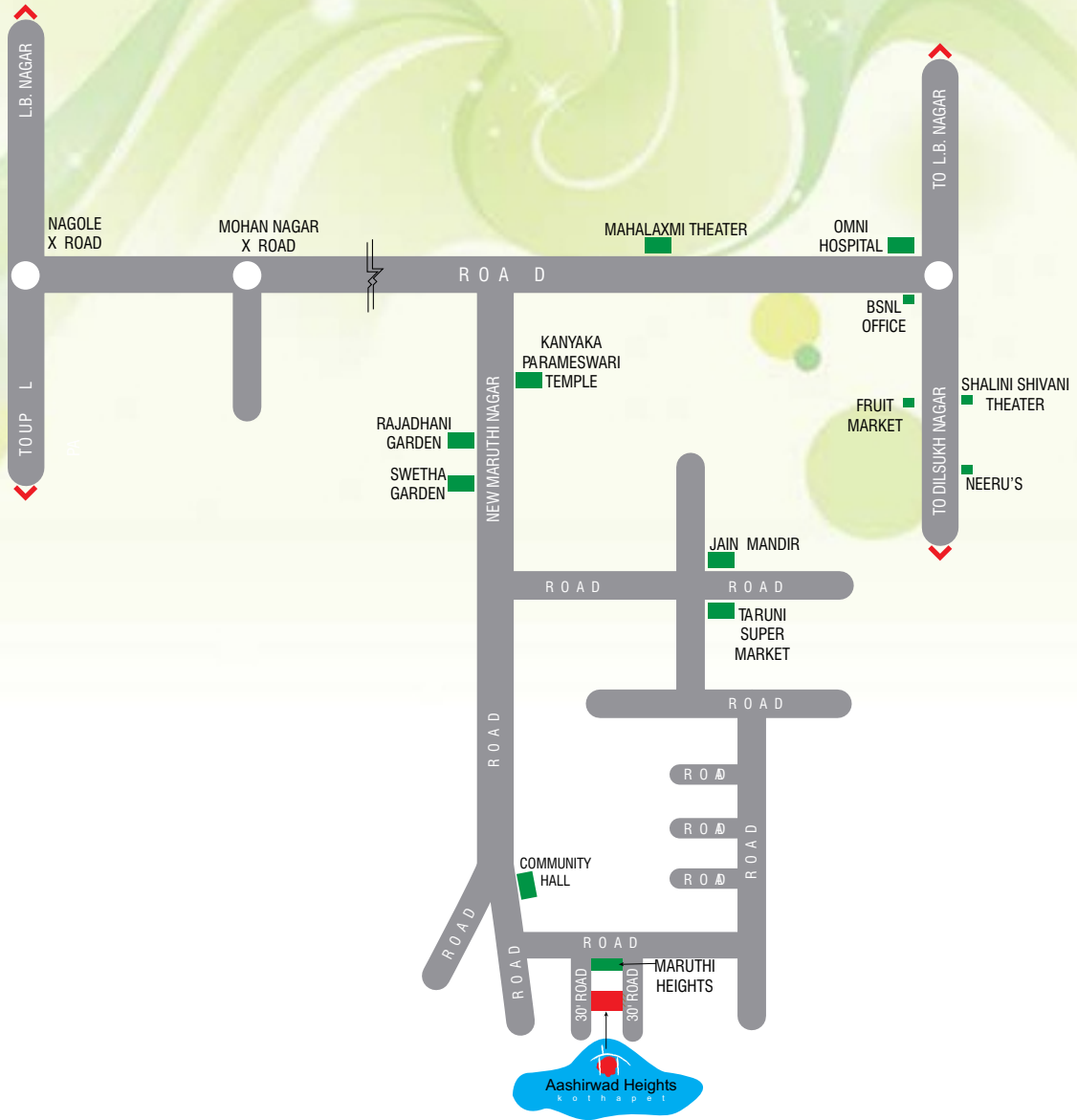
- Standby power backup for common lighting & lifts.
- 24X7 security with intercom facility.
- Well equipped gym.
- Table tennis and indoor games facilities.
- Landscaping of open spaces.
- Tot lot with play equipment.
- Street furniture.



NOTE : This brochure is only a conceptual presentation of the project and not a legal offering. The promoters reserve the right to make any changes in plan, elevation and specifications as deemed to fit.



Location Plan



Builders & Developers

SHRI RAJA RAJESHWARI ENTERPRISES

Architects

Srinivas Kondai, M. Arch
Samskruthi Heaven, Tarnaka, Sec'bad.
Ph: 09849028266

Marketed By



Flat No: 301 & 302, Plot No: 10, Srinagar Colony (Above Tirumala Furniture Show Room)
Saket Road, Kapra, ECIL (post), Hyderabad - 500 062, Phone : 040 - 64515777,
email: gsrkestates.com@gmail.com, URL: <http://www.gsrkestates.com>

Mobile: 924624277