

Location Map

SHIKARI PALYA



A Masterpiece by



**G K SHELTERS (P) LTD.**

*Builders & Developers*

[www.gkshelters.com](http://www.gkshelters.com)



**G K SHELTERS (P) LTD.**  
*Builders & Developers*

For Booking Contact:  
**94808 26443 / 94808 26444**

**Corporate Office :**  
No. 27-44/140, 4th Floor, 9th Main, 3rd Block, Jayanagar,  
Bangalore - 560 011. Tel : +91 08-22445573 / 22441397 Fax : +91 08-22452759

**Marketing Office :** No. 65, 12th Main Road, 3rd Block, Jayanagar,  
Bangalore - 560 011. Tel : 080-22447999 / 22457999

Email : [gkshelters@gmail.com](mailto:gkshelters@gmail.com)

**YUKTI**  
ARCHITECTURE, ENGINEERING, INTERIORS.  
NO. 82, B.S.K. 2nd Stage, Bangalore - 70.  
Tel : +91 80-26713029  
Email: [yuktiv@gmail.com](mailto:yuktiv@gmail.com)

**LEGAL ADVISOR**  
K. Venkata Sudheer  
Mobile : 98456 82098

Note : This brochure is purely conceptual and not a legal offering, further the promoters/architects reserve the right to add/delete/alter any details specifications/elevation mentioned.

## THE G K MEADOWS

Hosur Main Road off Electronic city

South Bangalore's  
**Most Coveted**  
Residential Project

**GK**  
*Meadows*  
we build your dreams



*Welcome to*

**"GK MEADOWS"** a BDA approved 2 & 3 BHK residential apartment is located near IT hub, Electronic City.

The apartment has close proximity to many well known amenities / services like IT Companies, Educational Institutions, hospitals, hotels & shopping centers, making it preferable option to own a home.

**"GK MEADOWS"**, a single block apartment of 9 floors, with 85 units, has built up area ranging from 1200 Sq.ft. to 1700 Sq.ft. The skillful and crafty teamwork of Architects, Structural Engineers, landscape architects and best Construction Team ensures a quality construction for your dream home.



**GK**  
*Meadows*  
we build your dreams



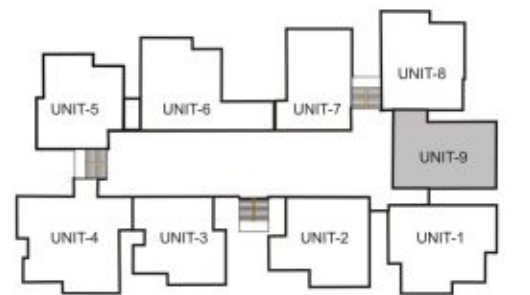
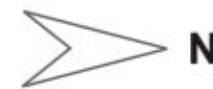
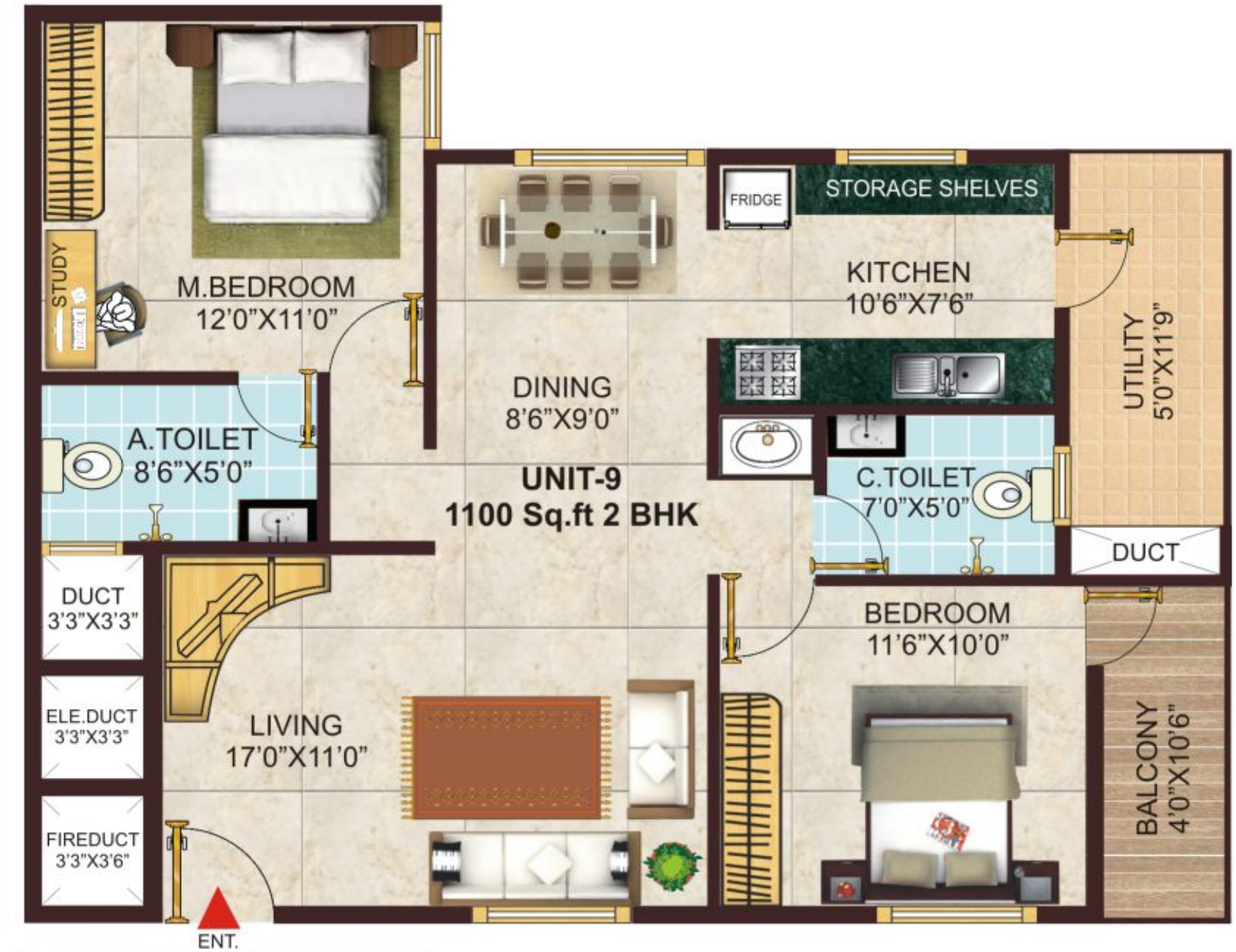
As Per Vasthu



TYPICAL FLOOR PLAN

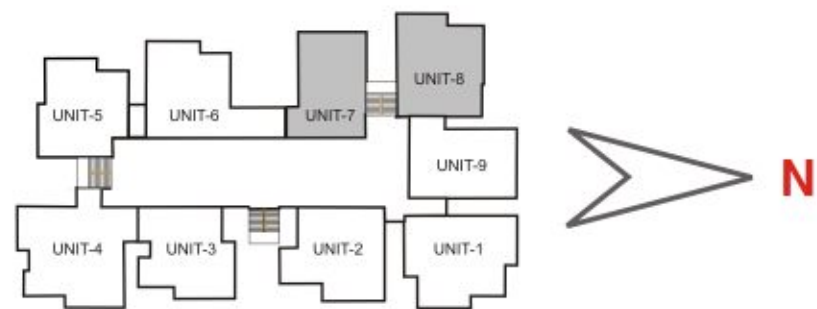


UNIT-9 | 2 BHK | 1100 Sq.ft



UNIT-7 | 2 BHK | 1100 Sq.ft

UNIT-8 | 2 BHK | 1185 Sq.ft



Internal features:-

- Power back up for common area lightings, lifts, water
- Intercom provision • Lifts • Solar heaters provision

External features:-

- Reserved parking • Visitor's Parking • Swimming pool
- Lawn & Garden • Children's play Area • Jogging Track
- Paved walkway • Water storage • Compound wall • 24/7 security

Additional features:-

- Gym • Multipurpose Hall

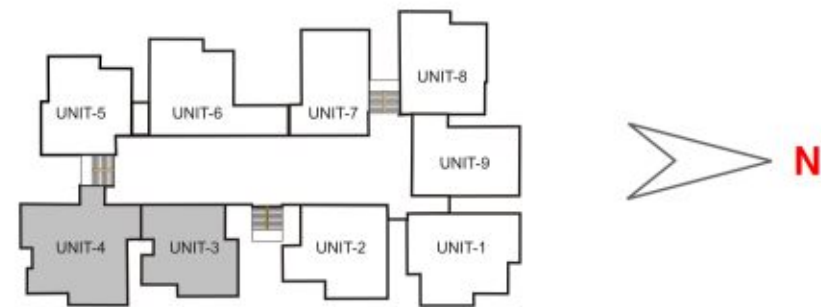
**GK Meadows**  
we build your dreams



UNIT-3 | 2 BHK | 1135 Sq.ft



UNIT-4 | 3 BHK | 1555 Sq.ft



Lots of expectations, dreams, desires and hopes hinged on our possessing a dream home. Right from strategic location to amenities to quality of construction to return on investments, one doesn't want to compromise on any of these.

We at GK SHELTERS PVT. LTD. Company understand your concerns about your dream home- destination that not only adds up to your quality of life but adds up to your investments as well, in the long run.



**GK**  
*Meadows*  
we build your dreams

**GK Meadows**, a 9-storey edifice is your answer-coming up at just 500 metres from Hosur Main Road is a residential project that has just the right numbers -85 privilege apartments of 2 and 3 BHK, ideally designed for more space and accessibility.

**GK Meadows** also brings to you the very essence of a quality lifestyle - features that makes one's life complete in terms of comfort, convenience and value.





**GK**  
*Meadows*  
we build your dreams

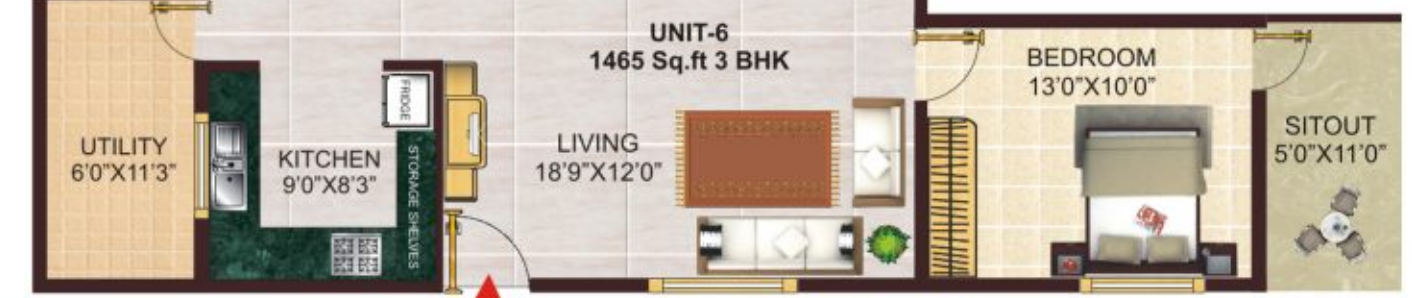


## close enough to whatever your heart wishes for.

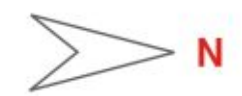
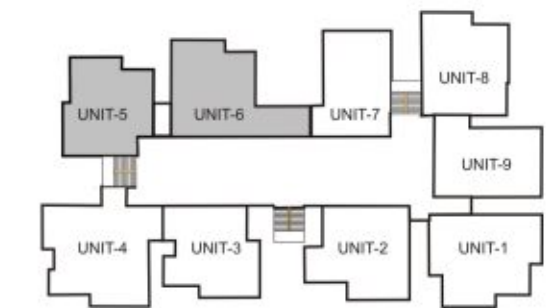
GK Meadows is very strategically located. Fast taking shape very close to Hosur Road, in fact just less than 500 metres away is the BDA approved 2-3 BHK apartment. The proposed apartment block ( Ground+9 upper floors ) is coming up next to Concorde Midway Apartments and close enough to IT majors like Wipro, Infosys etc. The project is close enough to other day-to-day requirements like shopping malls, entertainment clusters, educational Weschool, Xime Bangalore, Acts Secondary School, Treamis World School, Paradise Residential & Day School, BRS Global Centre for Excellence and Health institutions Narayana Hrudayalaya, Swamy Trauma Care & Maternity Hospital, Sparsh Hospitals, Vimalalaya Hospital, Srinidhi Hospital. Looks like someone answered your prayers!



**UNIT-5 | 2 BHK | 1105 Sq.ft**



**UNIT-6 | 3 BHK | 1465 Sq.ft**



## On Going Projects



**G K JEWEL CITY**



**SLV GARDEN CITY**



**GK GOLDEN CITY**



**GK LAKE VIEW**

## Completed Projects



SLV VILLA



SLV HOMES



SLV RESIDENCY



ROHINI ENCLAVE



SLV ENCLAVE



ROHINI MANOR



SLV PARADISE



ROHINI RESIDENCY



SLV PEARL



GK Goutham Garden

### Location Advantage

#### Proximity

- 21 km from Vidhana Soudha
- 9 kms from Begur Road
- 19 kms from MG Road
- 13 kms BTM Layout
- 22 kms from City Railway Station
- 13 kms from Sarjapur Road

#### Majors IT Sectors

- Wipro
- Infosys
- Siemens etc

Super Markets & Much More.....

#### Educational Institution

- Treamis World School
- Acts Secondary School
- Day School
- B R S Global Center

#### Hospitals

- Narayana Hrudayalaya
- Swamy Trauma Care
- Sparsh Hospital
- Vimalalaya Hospital
- Srinidhi Hospital

**GK**  
*Meadows*  
we build your dreams



## Specifications



### STRUCTURE :

R.C.C. Framed structure Designed for Zone II Regulations, as per Structural drawings.



### PLASTERING:

Smooth with Lime Rendering for interior to received OBD and sponge Finish for exterior to receive cement paint.



### WINDOWS:

wooden windows of Sal / Honne frames, shutters, and windows/ventilators with 4 mm tinted glass and MS safety bright rods.



### KITCHEN:

Granite counter top with stainless steel sink, and drain board 2' height glazing tiles Dadoing shall be provided above the plat form.



### ELECTRICAL:

Concealed type conduits fire retardant wire and switches of Anchor/Lisha make. TV and Telephone points one each in the living room and master bed room will be provided.



### WATER:

Bore well water for entire flat.



### WALLS:

6" & 4" solid concrete blocks shall be used for main walls and 4" & 8" and 16" for partition wall.



### DOORS:

Main door with teak wood frames and designed shutters with brass fittings. Internal doors of Mathi or Honne wood frames and modular shutters.



### FLOORING:

Vitrified flooring for living, bedrooms, dining, kitchen areas & Sadarhalli grey granite will be provided for common area and lobby and Ceramic Tiles for balconies.



### BATHROOMS:

Dadoing shall be provided in toilets / bath rooms for height of 7' and flooring ceramic glazing tiles, White sanitary fixtures, premium CP fittings & Health faucets. MAKE: HINDUSTAN SANITARY, C.P. / any other standard make.



### PAINTING:

OBD for interior and exterior shall have weather proof paint and enamel paint for the wood work and grill work.



### INTERIOR:

At extra cost as per the clients choice.