



RAJYASH RIVERIUM



2 & 3 BHK Sky Living RESIDENCE



welcome to sky living by



We make a living by what we get,
but we make a life by what we dream.



Rajyash
RIVERIUM
2 & 3 BHK Sky Living Residence



Rajyash
RIVERIUM
2 & 3 BHK Sky Living Residence



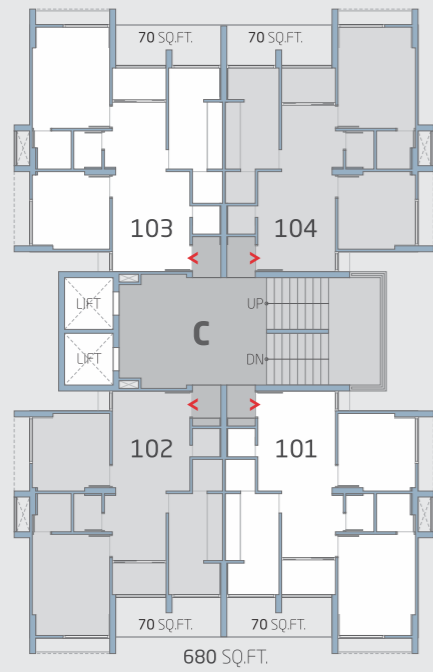
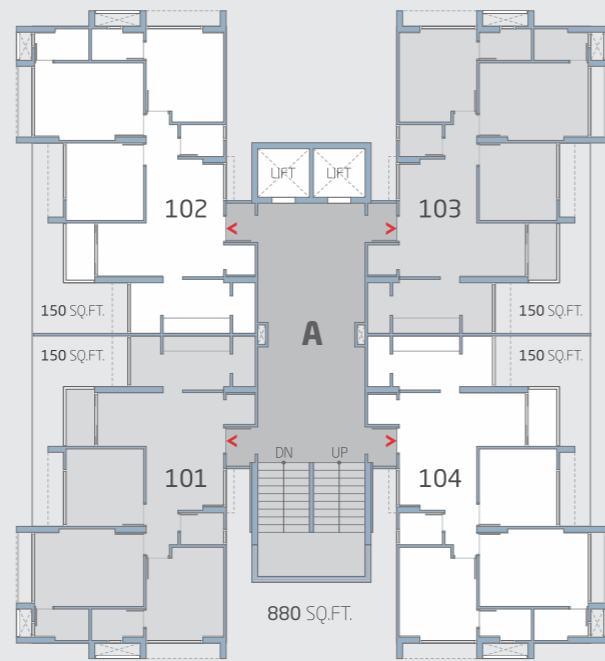
GROUND FLOOR PLAN



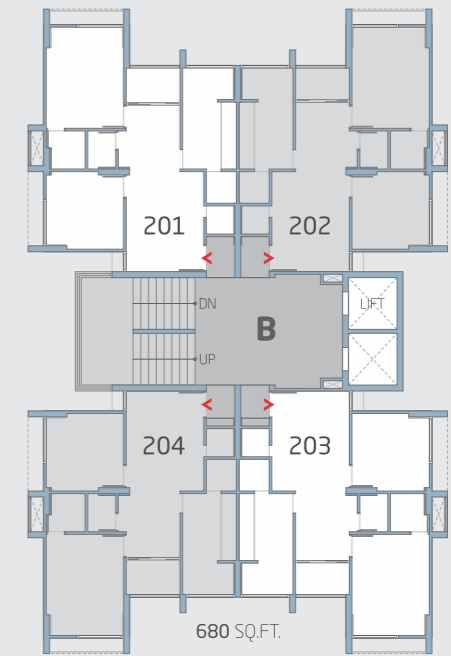
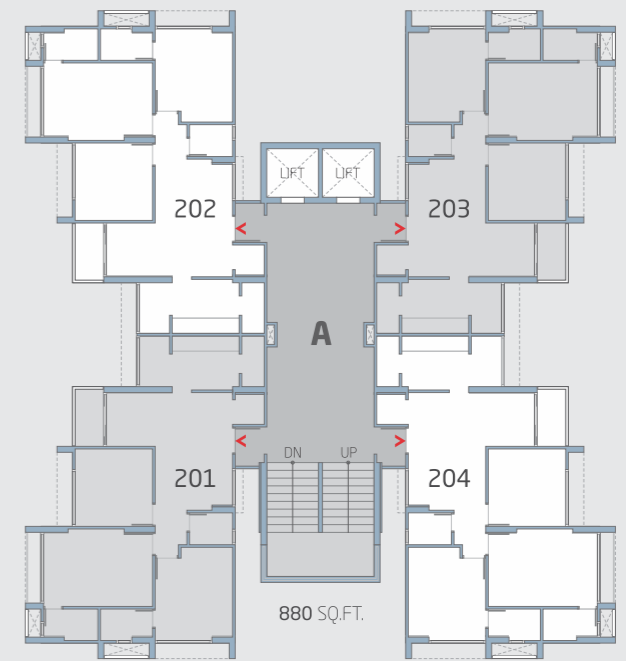
CLUB HOUSE PLAN

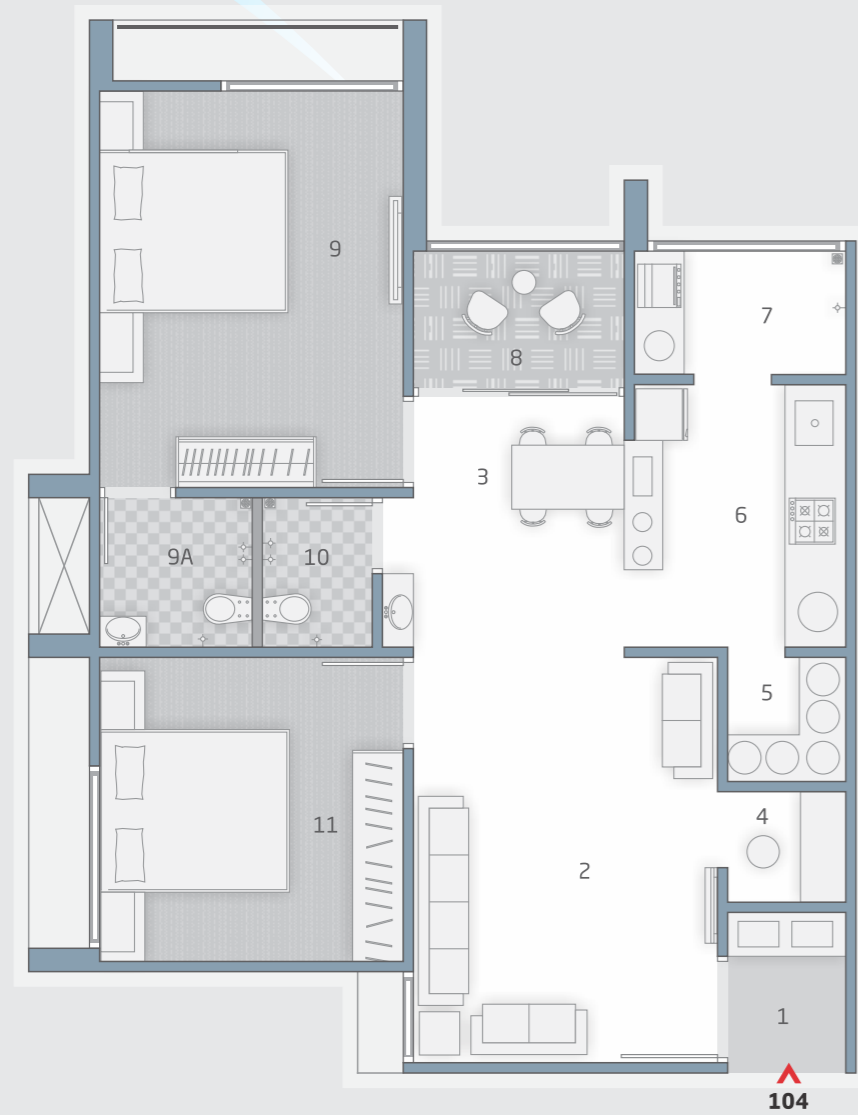


FIRST FLOOR PLAN



TYPICAL FLOOR PLAN





2 BHK | 680 Sq.Ft.

(CARPET + WALL)
(615 Sq.Ft. + 65 Sq.Ft.)

NO	SPACES	AREA
1	ENT. FOYER	4'-0" X 5'-0"
2	DRAWING ROOM	10'-0" X 13'-0"
3	DINING	7'-0" X 9'-0"
4	PUJA	4'-0" X 3'-6"
5	STORE	4'-0" X 4'-0"
6	KITCHEN	7'-0" X 9'-0"
7	WASH	7'-0" X 4'-0"
8	BALCONY	7'-0" X 4'-0"
9	BED ROOM	10'-0" X 13'-0"
9A	TOILET	5'-0" X 5'-0"
10	C.TOILET	4'-6" X 5'-0"
11	BED ROOM	10'-0" X 10'-0"



104



3 BHK | 880 Sq.Ft.

(CARPET + WALL)
(795 Sq.Ft. + 85 Sq.Ft.)

NO	SPACES	AREA
1	ENT. FOYER	4'-0" X 5'-0"
2	DRAWING ROOM	10'-0" X 15'-0"
3	PASSAGE	4'-0" X 5'-3"
4	C.TOILET	5'-6" X 4'-0"
5	BED ROOM	10'-0" X 12'-0"
5A	TOILET	6'-6" X 4'-0"
6	BED ROOM	14'-0" X 10'-0"
6A	TOILET	7'-0" X 4'-0"
7	BED ROOM	10'-0" X 10'-0"
8	BALCONY	4'-0" X 7'-3"
9	DINING	6'-9" X 7'-0"
10	WASH	4'-0" X 7'-0"
11	KITCHEN	9'-0" X 7'-0"
12	STORE	3'-0" X 7'-0"
13	PUJA	4'-0" X 3'-9"



104

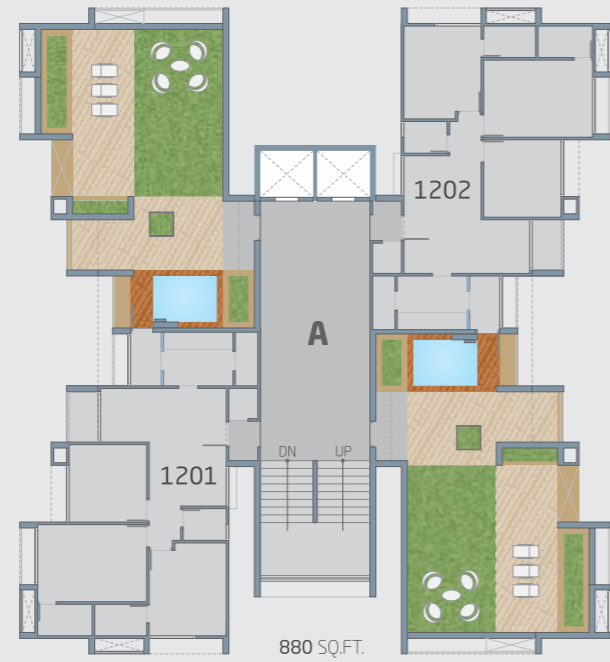




Rajyash RIVERIUM

God gave us the gift of life;
it is up to us to give ourselves the gift of
living well.

TOP
FLOOR PLAN



TERRACE
PLAN



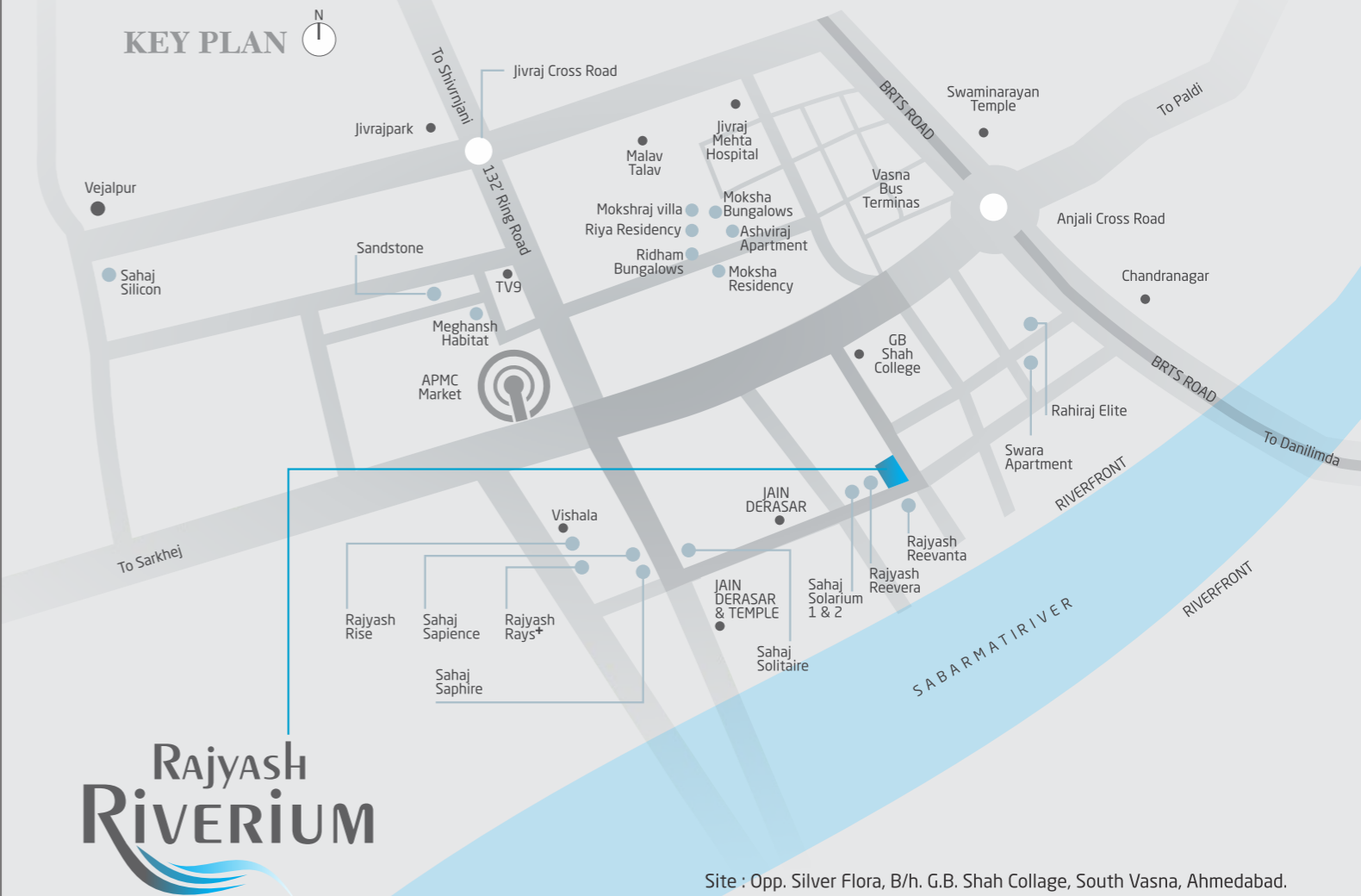
AMENITIES

- VEHICLE FREE LANDSCAPED GARDEN SURROUNDED WITH MUSIC SYSTEM
- LOUNGE & LIBRARY WITH WI-FI ZONE
- HEALTH CLUB & YOGA CENTRE
- MOVIE THEATRE WITH DANCE FLOOR
- CHILDREN PLAY AREA
- CAFETERIA
- KID'S POOL
- OUT DOOR GYMNASIUM
- MULTIPURPOSE COURT
- SENIOR CITIZEN & WOMEN SIT-OUT
- WELL DESIGN SKY LOUNGE WITH SITTING & READING ZONE
- GAMING ZONE
- GATED ENTRY, CONTROLLED ACCESS WITH CCTV SURVEILLANCE FOR HIGH SECURITY
- BUS PICK-UP & DROP-OFF ZONE
- GENERATOR FOR POWER BACK-UP

BASEMENT PLAN



KEY PLAN



Rajyash
RIVERIUM

Site : Opp. Silver Flora, B/h. G.B. Shah Collage, South Vasna, Ahmedabad.

SPECIFICATION

FLOORING :

20"x20" Porcelain flooring in entire flat Tiles in all areas

BATHROOM :

Glazed tile dado up 4ft. height in all toilets.

DOORS & WINDOWS :

Decorative main door with wooden frame.
Other wooden doors & aluminum window.

ELECTRICAL :

Concealed copper wiring with sufficient electric points in all room.

KITCHEN :

Granite platform S.S. sink and glazed tiles dado up to 2ft.height.

WALL FINISHES :

External : Sand face plaster with white wash.
Internal : Smooth finished plaster with acrylic paint.

SALIENT FEATURES

- Vehicle Free Ground Plaza
- Grand Entrance along with waiting Lounge
- Ample parking space at ground level as well as basement



BEST PROJECT OF
2013
RESIDENTIAL CATEGORY



WE CONTINUE THE EXCELLENCE



RAJYASH
Excellence Endures!

ISO 9001:2008 Certified Company

DEVELOPER
MEHAAN ENTERPRISE

DESIGN
APURVA AMIN

STRUCTURE DESIGN
SARJAN CONSULTANTS

CALL: 990 990 7373
www.rajyashgroup.com

CORPORATE OFFICE:

305 - 405, Mauryansh Elanza, Nr. Parekh's Hospital, Shyamal Crossroad, Satellite, Ahmedabad, Gujarat, India.

Developers Note

- Developers reserves the rights to make necessary Changes in the above specifications without any prior notice such changes would be binding to all members.
- Stamp Duty, Registration fees, Advocate fees, Service tax, Vat, maintenance deposit & maintenance charges will have to be paid and bared by the members only.
- The information contained in this brochure is subject to change as may be approved by the authorities and cannot form part of any offer or contract. All plans are subject to any amendments approved by the relevant authorities.
- Floor areas are approximate and subject to final survey illustrations in this brochure are artist s impressions and serve only to give an approximate idea of the project. while every reasonable care has been taken in providing this information, its owners cannot be held responsible for any inaccuracy
- This brochure is not to be treated as part of the document and is for an easy display of the project.
- Only internal changes shall be allowed with prior permission and shall be charged extra
- Subject to Ahmedabad jurisdiction.