



**BHAVYA'S**

*Majestic Enclave*

*Classic Enclave*

Owners' Joy | Bhavya's Pride !!

## SPECIFICATIONS

- Structure** : RCC framed structure.
- Super Structure** : Walls with table moulded brick with cement mottar.
- Doors** : Main door - Teak wood door frames with teak shutters.  
Other doors NTW Frames with flush shutters.
- Windows** : NTW frames with glazed shutters and standard design of grills.
- Flooring** : Ceramic tile flooring with skirting.
- Kitchen** : Granite platform and sink, 2' glazed tiles dado with provision for storage and exhaust fan.
- Toilets** : Ceramic tile flooring with glazed tile dado upto 5' height and with standard sanitaryware of white colour.
- Painting** : Oil bound distemper for interiors and cement based paint for exteriors.
- Electrical** : Concealed copper wiring. 3 Phase power supply with adequate power points.
- Water** : Abundant water supply through separate overhead tanks.
- Lift** : 2 lifts of 6 passenger capacity.
- Generator** : Standby generator for one lift and common area lighting.

A gracious definition of contemporary living and all conveniences of a modern lifestyle - right here in Hyderabad.

## Building homes, not just houses.

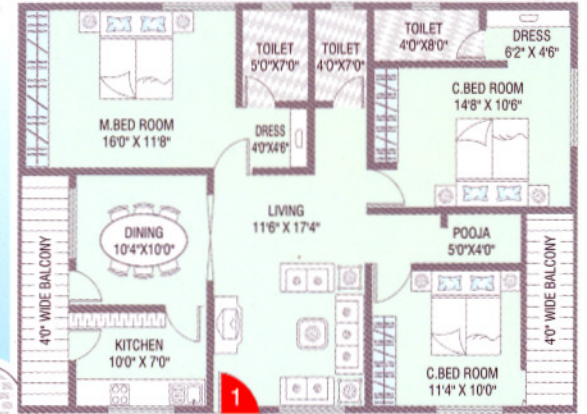
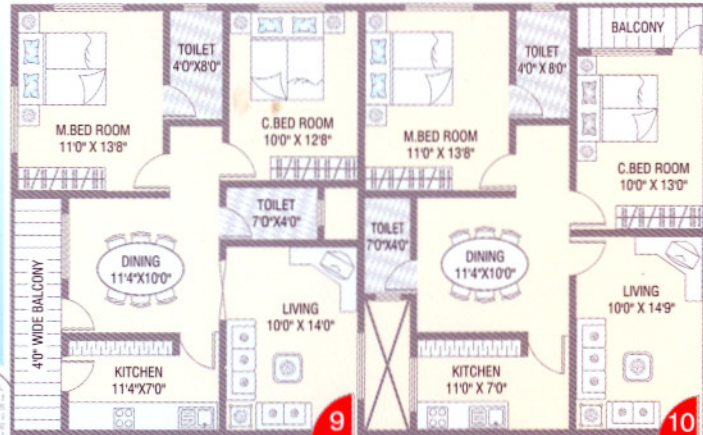
It is just the place to get away from it all. Every day! Because this is what your home should always have been like. And a locational advantage that will only multiply with time. The City is developing, and rapidly so in the direction of your future home. Which makes it a perfect destination for the intelligent investor too. So any way you look at it. These are truly the place where dreams will come true!

Quality, Expertise & Commitment - the three pillars that has carried the momentous growth and success that **Bhavya Constructions** has seen in the city. Make them your partner in constructing a beautiful future for you and your family.

### Area Statement

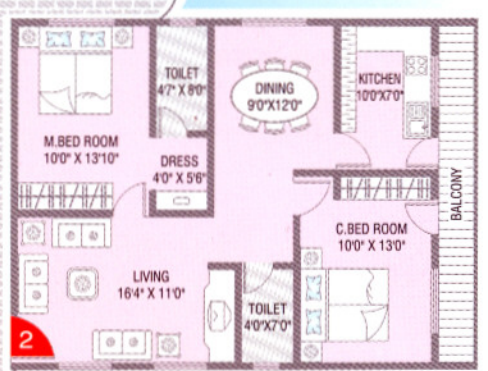
Flat No.	1	2	3	4	5	6	7	8	9	10
Area In Sft.	1,470	1,040	1,470	1,000	1,000	1,050	1,100	1,100	1,000	1,000

# TYPICAL FLOOR PLAN



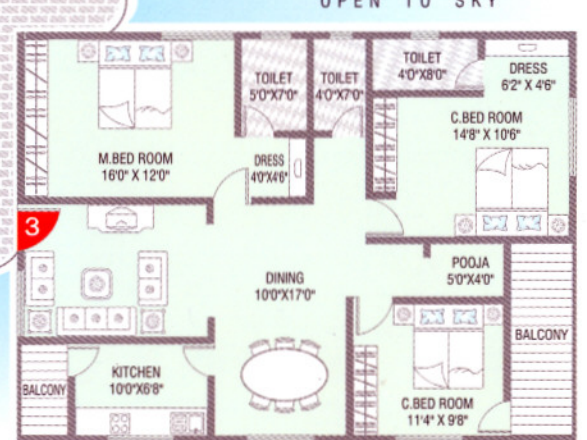
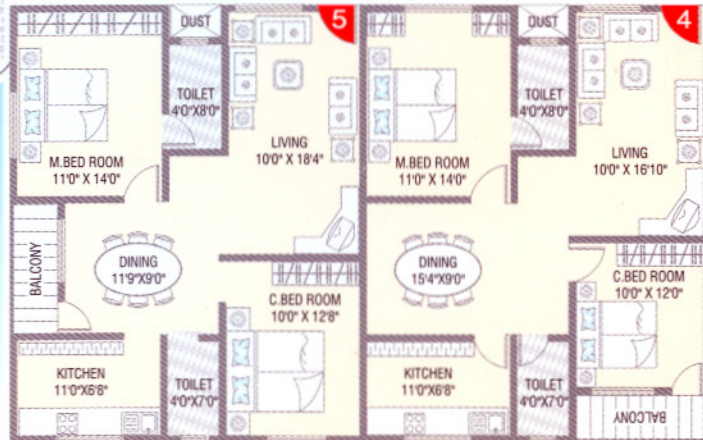
OPEN TO SKY

OPEN TO SKY



OPEN TO SKY

OPEN TO SKY



OPEN TO SKY

OPEN TO SKY



Lakshmi Krishna Residency  
(at Venkata Ramana Colony)



(at D.K. Road, Ameerpet)



Sree Arcade (at Erragadda)



(at Kondapur)



Krishna Residency (at Red Hills)



Dr. K. L. Rao Residency (at Vidyanagar)



"Nandanam" (at Nizampet Road)



Siddamsetty Towers (at R.T.C. 'X' Roads)



Shanti Nivas (at Anand Nagar)



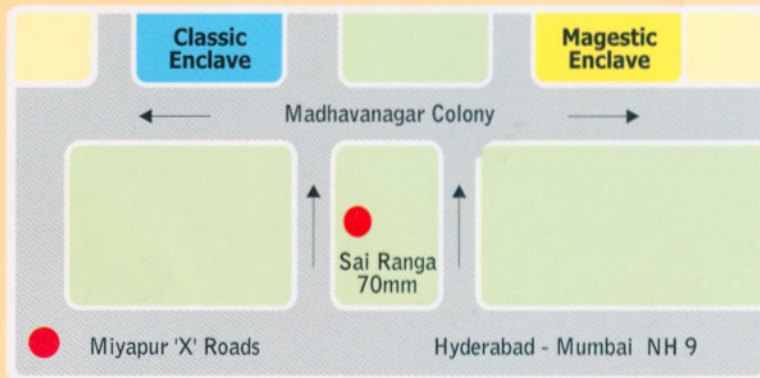
Krishna Residency (at Ameerpet)



"Anandam" (at Kukatpally)

The story of  
Bhavya's success,  
written down in concrete:

## ROUTE MAP



### PROMOTORS BHAVYA CONSTRUCTIONS PVT. LTD.

Corporate Office: Bhavya's Padmavathi Mansion,  
Plot No. 23, Gayathri Nagar, Behind Maitrivanam  
Ameerpet, Hyderabad - 500 038. Ph: 2373 1121  
Fax: 2374 6897 www.bhavyaconstructions.com

### ARCHITECTS M/s. Sangeeta & Associates

Flat No. G-1, G.V.S. Towers,  
Opp. Parivar Dhaba, Indira Park Road,  
Hyderabad - 500 080. Ph: 2661 5438

### STRUCTURAL ENGINEERS

**N. Anil Kumar** B.E. (M.Tech.)  
**V. Ravinder Reddy** AM.I.E., M.Tech. (Structures)  
Flat No. 504, Block D, Siddamsetty Towers,  
Jawahar Nagar, Road No. 6, Near RTC X Roads,  
Hyderabad - 500 029. Ph: 2762 5408

### CHARTERED ACCOUNTANTS

**M/s. Mahavishnu & Sharma**  
220, Chenoy Trade Centre, Parklane,  
Secunderabad - 500 003.  
Ph: 2781 7144, 2631 1040