



**BESTECH**  
**S Q U A R E**

Residential ■ Commercial Mall ■ Business Towers ■ Hotels

Mohali, Punjab

Unveiled- Bestech Square, Mohali



**BESTECH**  
**SQUARE MALL**

*Radisson*  
HOTELS & RESORTS

**BESTECH**  
**BUSINESS TOWERS**

**BESTECH**  
**PARK VIEW**  
*Residences*  
2/3 Premium Bedroom Apartments

# Bestech Square - Foray in Tricity

- After its successful stint in NCR; Bestech is now coming at the doorstep of Chandigarh to create a landmark project- **“BESTECH SQUARE”**
- Located in Sector 66-Mohali, Bestech Square comprising of:
  - **Park View Residences** : Ultra modern 2/3 BHK apts.
  - **Bestech Business Tower** : State of the art offices spaces of approx. 6.5 lac sq.ft.
  - **Bestech Mall** : Multi specialty Retail of approx .3.5 lac sq.ft.
  - **5 Star Hotel** : Radisson

# Bestech Business Towers- Features

Futuristic showpiece spread across total area of 6.5 lac sq.ft.

Floor plate of 40,000- 80,000 sq.ft.

100% power back up

Modern fire protection system

Round the clock security

Individual distribution board for each floor/office

Conference facility, Meeting rooms available

Restaurants, Café, Club, Banks, ATM's within the premises

Gym/Fitness centre to workout

# Bestech Business Towers- Specification

Exclusive specifications encompassing:

- Elaborate landscaping
- Central air-conditioning
- Provision for Fiber Optic Telecommunication
- Hi-Speed Elevators
- Granite & Glass Façade finish building

# Bestech Square- Location

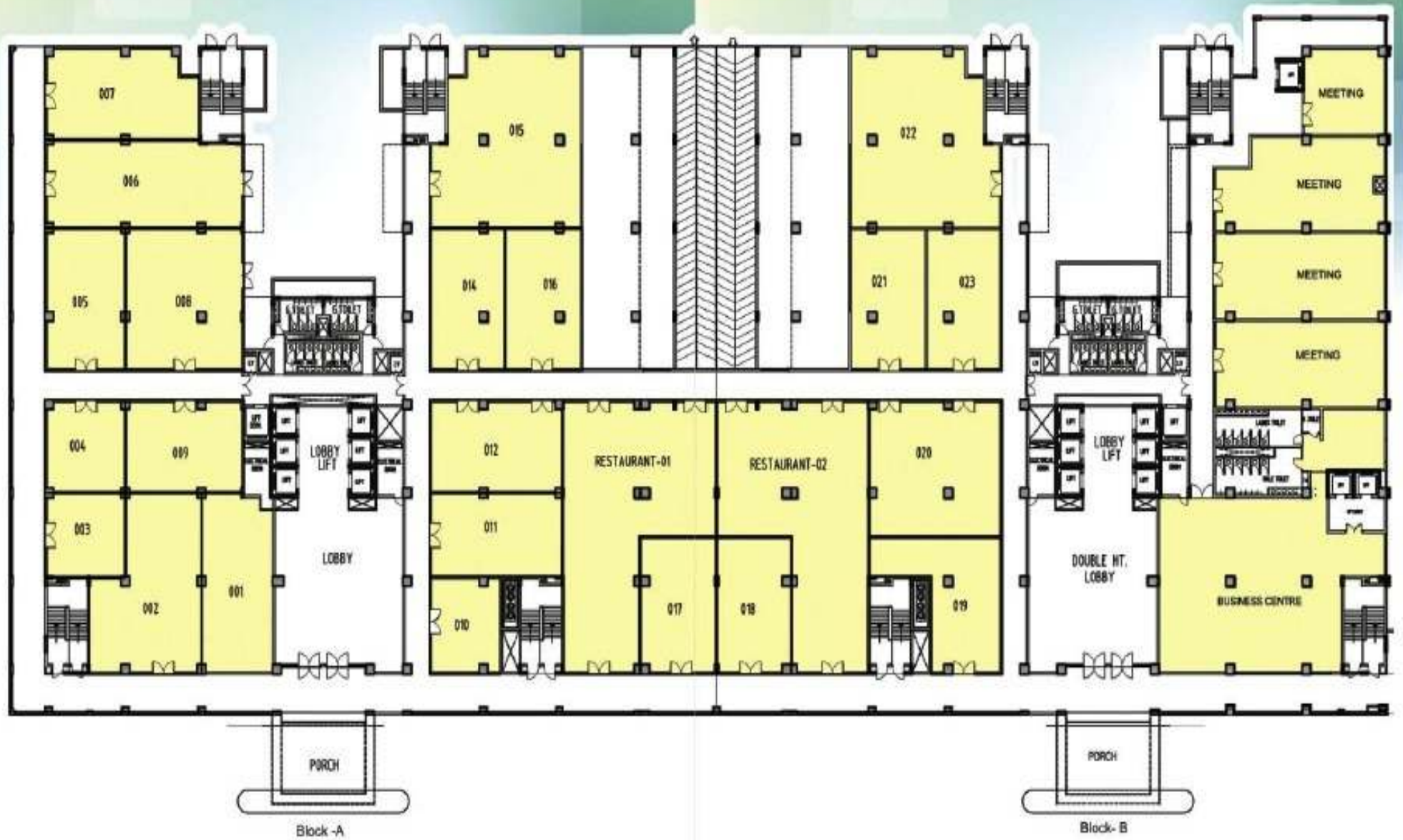


MAP NOT TO SCALE

# Site Plan

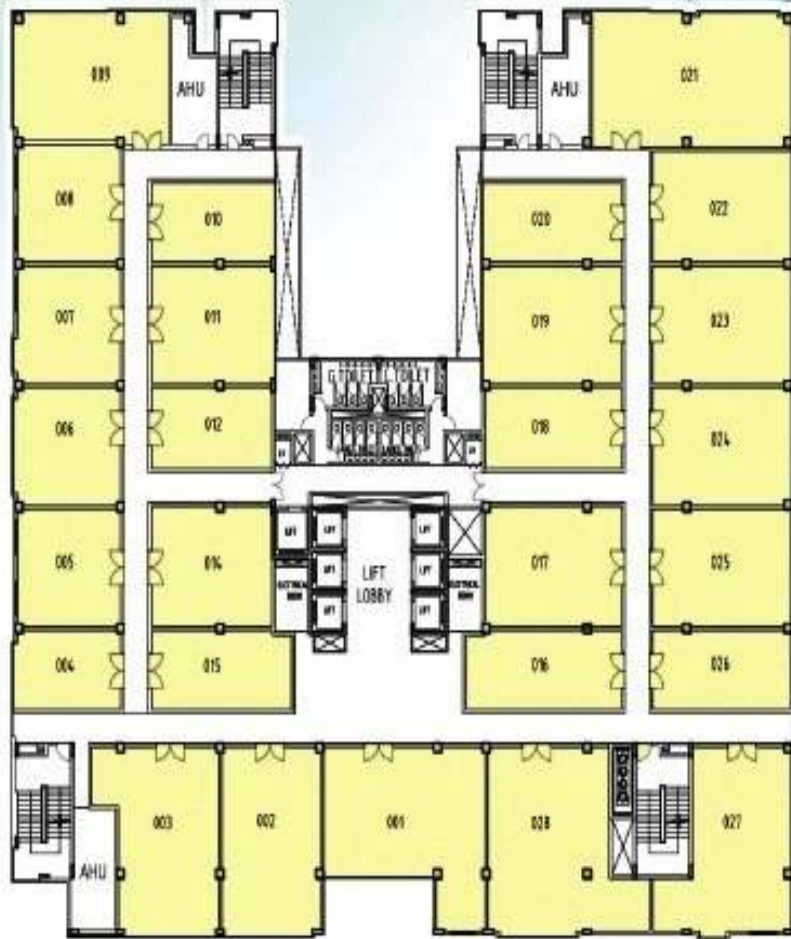


# GROUND FLOOR PLAN



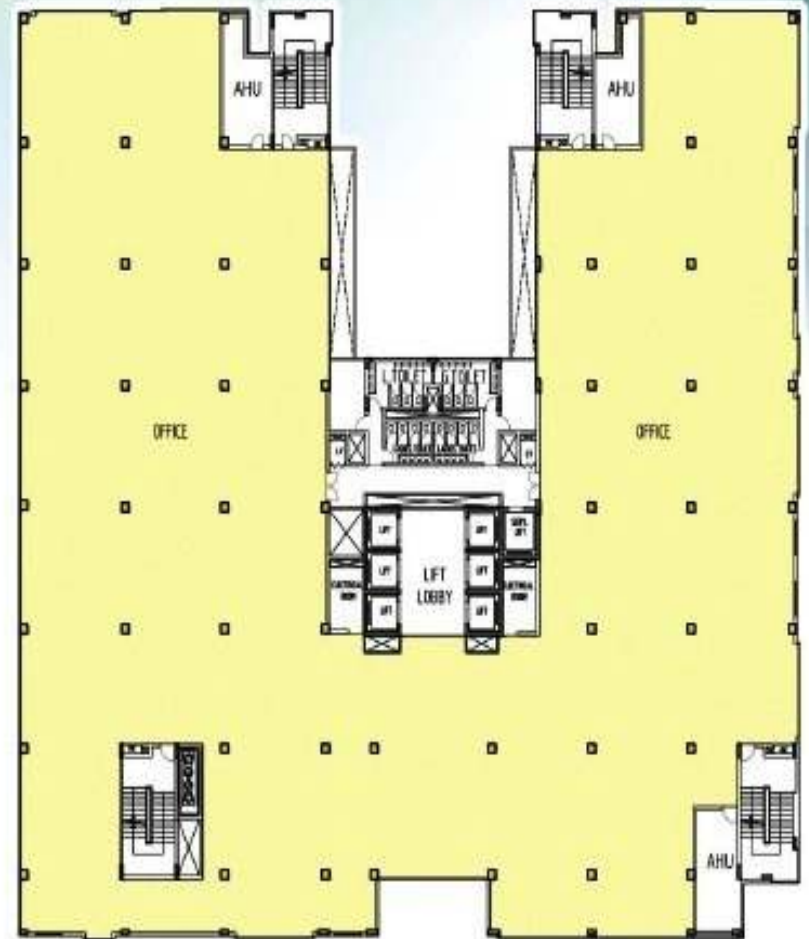


BLOCK-A



1st, 2nd, 3rd, 4th, 6th, 7th, 8th FLOOR PLAN

BLOCK-B



TYPICAL FLOOR PLAN

**FOR FURTHER QUERIES PLEASE FEEL FREE TO CONTACT.**

**Thanks & Regards,**

**Affinity Solutions Pvt. Ltd.**

**16469150050 (US)**

**442030516831 (UK)**

**CUSTOMER CARE NO -09999684905,09999684955**

Visit us at - [www.affinityconsultant.com](http://www.affinityconsultant.com)

Write us now - [info@affinityconsultant.com](mailto:info@affinityconsultant.com)