



Pallavaram 4th Street

(Ready To Occupied)

F1 - 1060 SQFT 2 BHK

F2 - 850 SQFT 2 BHK

S1 - 1020 SQFT 2 BHK

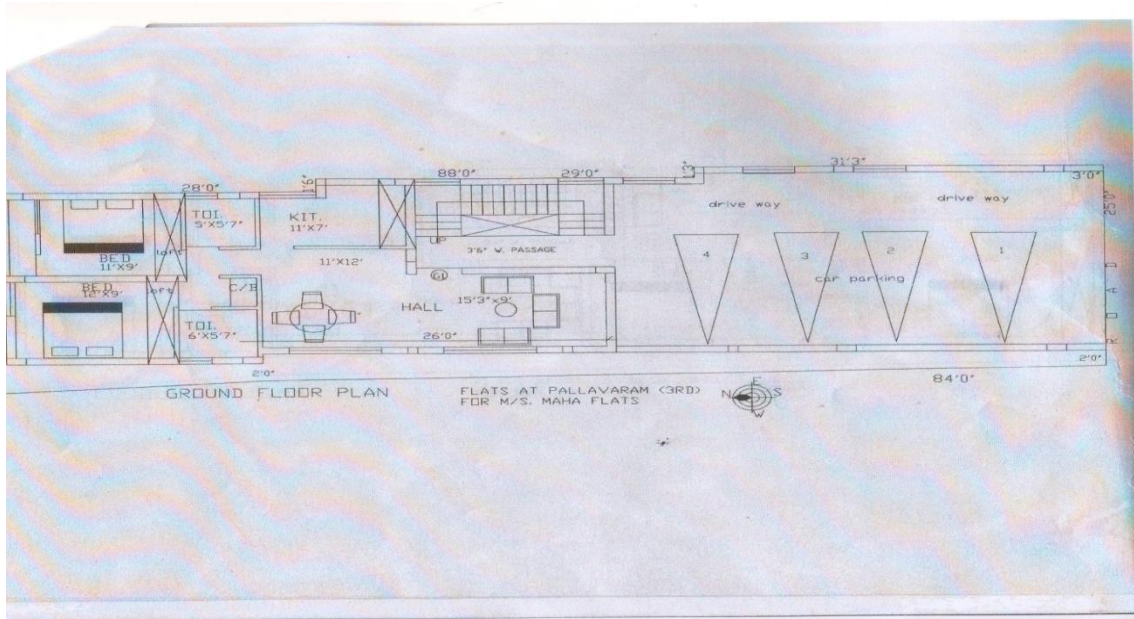
S2 - 725 SQFT 2 BHK

PER SQFT RATE - 4,300/-

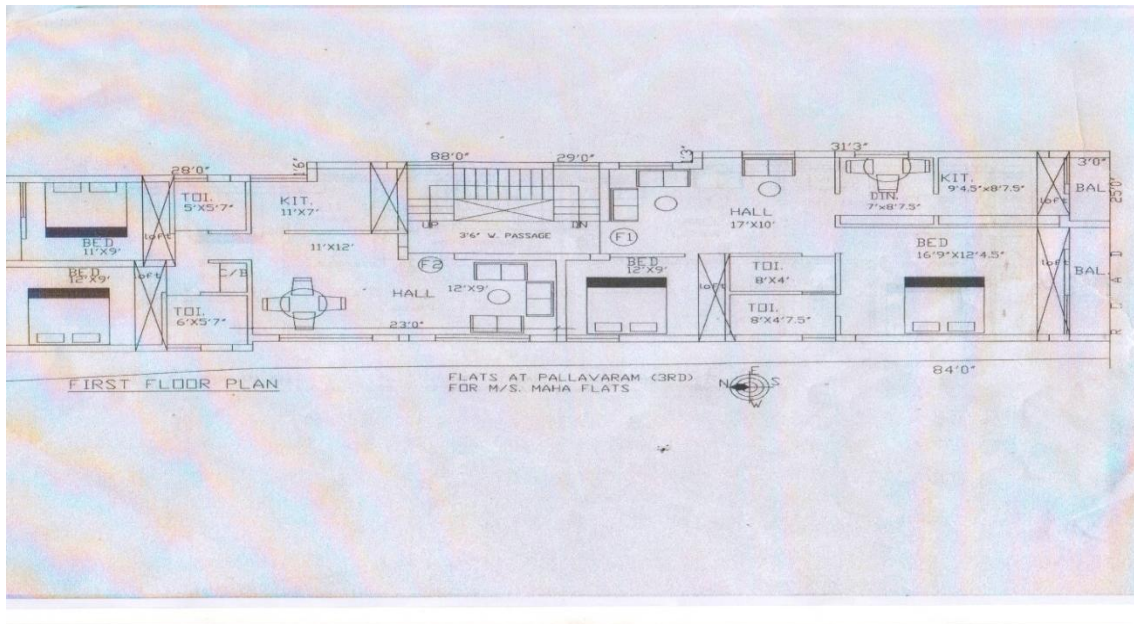
CAR PARKING - 2,00,000/-

EB WATER DRAINAGE REGISRATION - 2,00,000/-

Ground Floor:



1st Floor:



2nd Floor:

