



MAHA FLATS

Pozhichalur Gowl Bazaar Maha Natraj Project

G1 - 1450 Sqft 3BHK

F1 - 1188 Sqft 2BHK

F2 - 1164 Sqft 2BHK

F3 - 1238 Sqft 2BHK

S1 - 1188 Sqft 2BHK

S2 - 1531 Sqft 3BHK

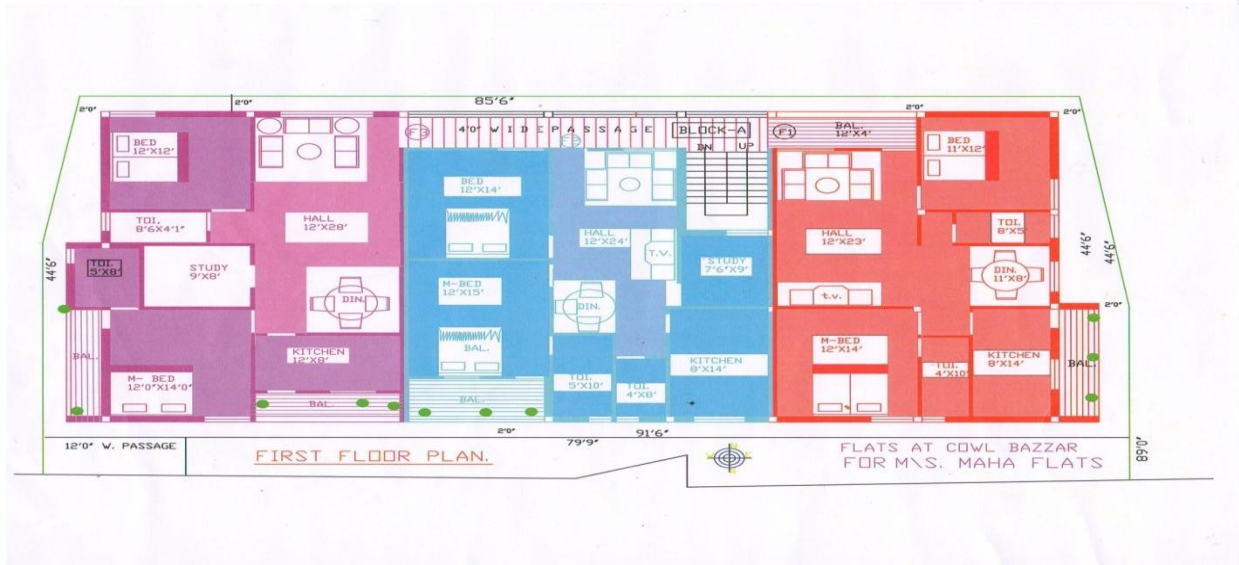
PER SQFT RATE 3500/-

CAR PARKING - 1,50,000/-

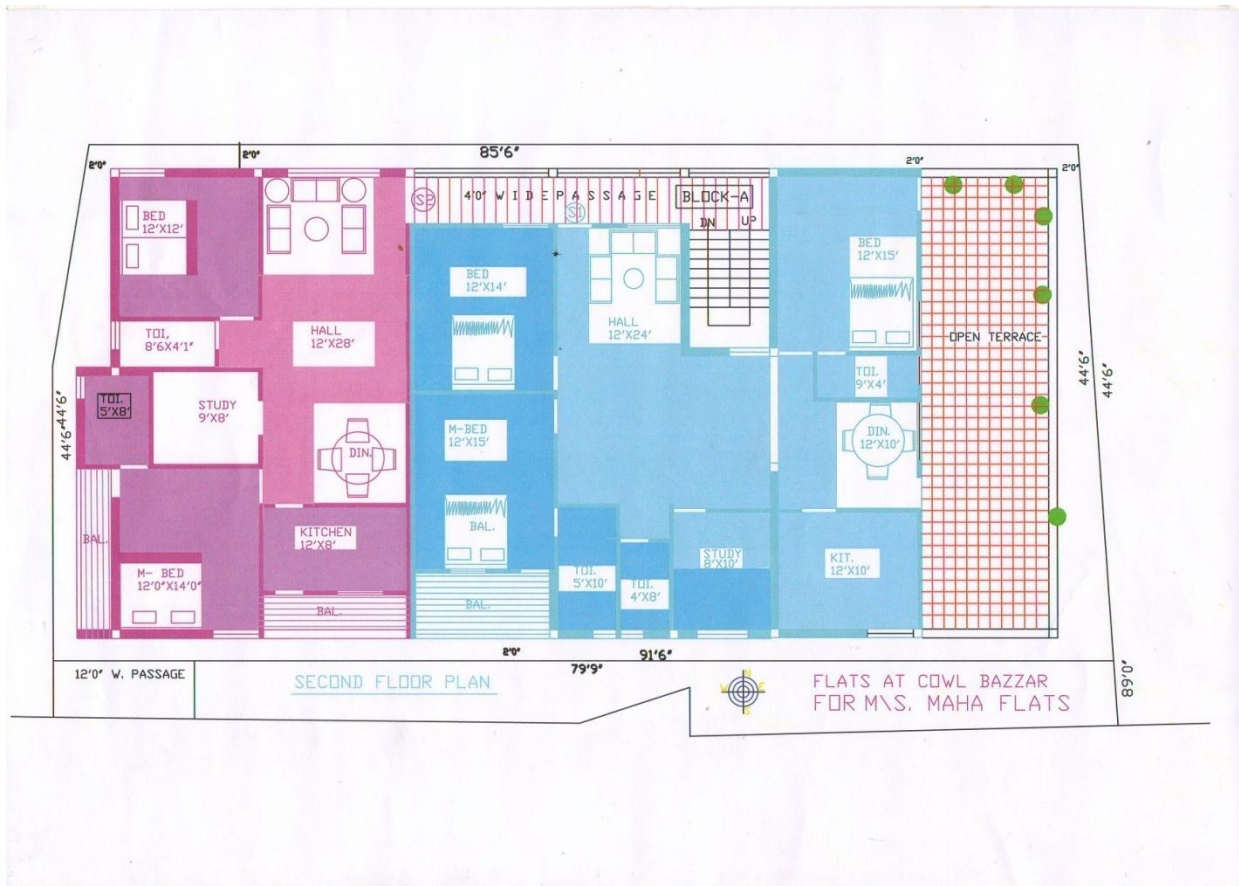
EB WATER REGISTRATION - 2,00,000/-

Meenambakkam Airport Signal Office Back Side.

1st Floor:



2nd floor:



Ground Floor:

