



No. 240, 2nd Floor, 32nd Cross  
 Jayanagar 7th Block, Bangalore 560 082  
 Tel: 080-22450012  
 Mob: 9880112222, 9731309520  
 Email: sales@pioneerdevelopers.co.in  
 Web: www.pioneerdevelopers.co.in

This brochure is conceptual and not a legal offering. The promoters reserve the right to make additions, alterations or changes in specifications as required from time to time.



Stay connected to the heart of IT Corridor.

**PIONEER MOONSTONE**  
 2 & 3 BHK LUXURY APARTMENTS  
 NEAR SATHYA SAI ASHRAM, WHITEFIELD

Pioneer Moonstone, near Sri. Sathya Sai Ashram, Whitefield. Luxurious 2 and 3 BHK Apartments.

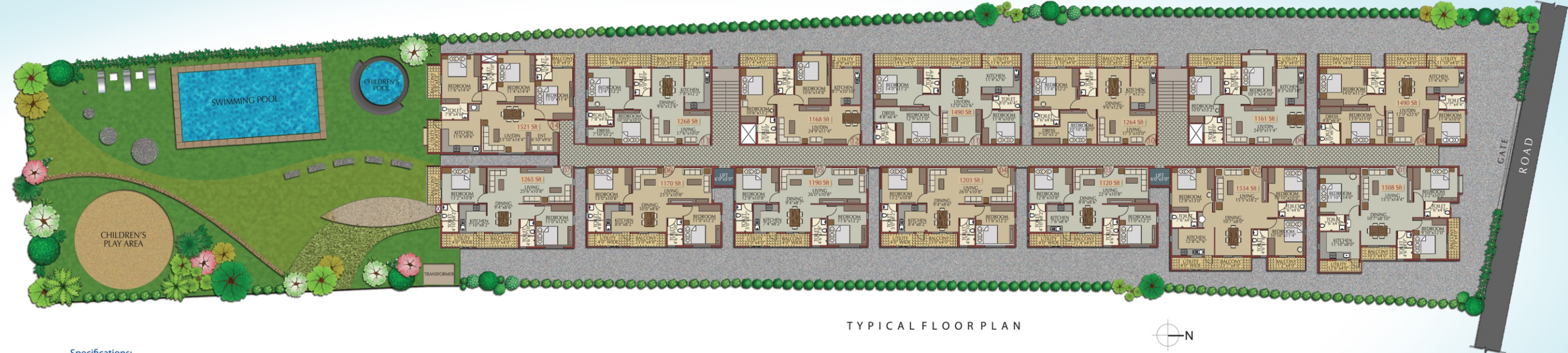
Welcome to Pioneer Moonstone. Located just few minutes away from ITPL and the commercial hub of Whitefield, this home is just a stone's throw away from Sri. Satya Sai Ashram.

Survey the neighbourhood, there are malls, restaurants, schools and hospitals in the immediate vicinity. As for the project, there is a large swimming pool, children's play area and an indoor games facility.

But then, how good is Pioneer Moonstone? Meticulously planned and finished, it lives up to all your expectations. More importantly, Pioneer homes have today become an integral part of Bangalore, giving evolved home-seekers like you a heightened sense of happiness and security.



**PIONEER MOONSTONE**  
2 & 3 BHK LUXURY APARTMENTS  
NEAR SATHYA SAI ASHRAM, WHITEFIELD



TYPICAL FLOOR PLAN



**Specifications:**

- Seismic II Zone compliant RCC framed structure
- 6" solid concrete block masonry for external walls and 4" solid concrete block masonry for internal walls
- Elegant entrance-lobbies in Granite/Marble

**Plastering:**

- All internal walls will be smoothly plastered with lime rendering

**Doors:**

- Teak wood frame for main door, Sal wood frames for internal doors

- TST shutter for main door and masonite shutters for bedrooms
- Water proof flushed shutter for balconies and toilets

**Windows:**

- Aluminium 3 track window with mesh

**Flooring:**

- Vitrified flooring
- Ceramic flooring for balconies

**Kitchen:**

- Black granite platform with steel sink

- 2' height wall tiles above platform

**Painting:**

- Interior - Emulsion
- Exterior - Weather coat

**Toilet fittings & Accessories:**

- Ceramic glazed tiles dado up to 7' height
- Jaguar or equivalent CP fittings
- Hindware or equivalent sanitary fittings

**Electrical:**

- Havels or equivalent make

**Amenities:**

- Swimming pool
- Children's play area
- Multi-purpose hall
- A well equipped gymnasium
- Indoor games room
- Jogging track
- Library (provision)

**Facilities:**

- OTIS or equivalent
- Generator power back up
- Rain water harvesting
- Sewerage treatment plant
- Round the clock security
- Intercom facility

**PIONEER MOONSTONE**  
2 & 3 BHK LUXURY APARTMENTS  
NEAR SATHYA SAI ASHRAM, WHITEFIELD