



Raviraj  
**astria**

THE BRIGHTER SIDE OF LIFE

PHASE II

1 BHK  
PREMIUM APARTMENTS & SHOPS



Raviraj  
**astria**  
THE BRIGHTER SIDE OF LIFE  
PHASE II



## **Company Profile:**

---

### **RAVIRAJ REALTY :**

The Company started its journey in construction and land development in the year 1994. Ever since, the company has grown from strength to strength. Today, Raviraj Realty stands as a trusted name in Pune's construction industry with numerous successful projects behind them.

The success mantra that we have adopted over the years has been – "Value for Money". Backed by a highly futuristic vision. Raviraj Realty has delivered households based on customer requirements at reasonable and reality based prices.

With a track record of delivering homes on time without compromising on quality, Raviraj Realty has become a reliable and bankable brand.

### **RAVIMA VENTURES :**

When we talk about Ravima Ventures, it is the knowledge and expertise based on 15 years of experience. Since our inception, we have completed over one million square feet of construction, spreading across various projects, both residential and commercial across the most prestigious locations in Pune. Our success attributes to many factors, but mainly, we understand the demands of our customers and deliver nothing but the best without any compromise on quality, thus giving the best value for money to customers.

## COMMON AMENITIES

---

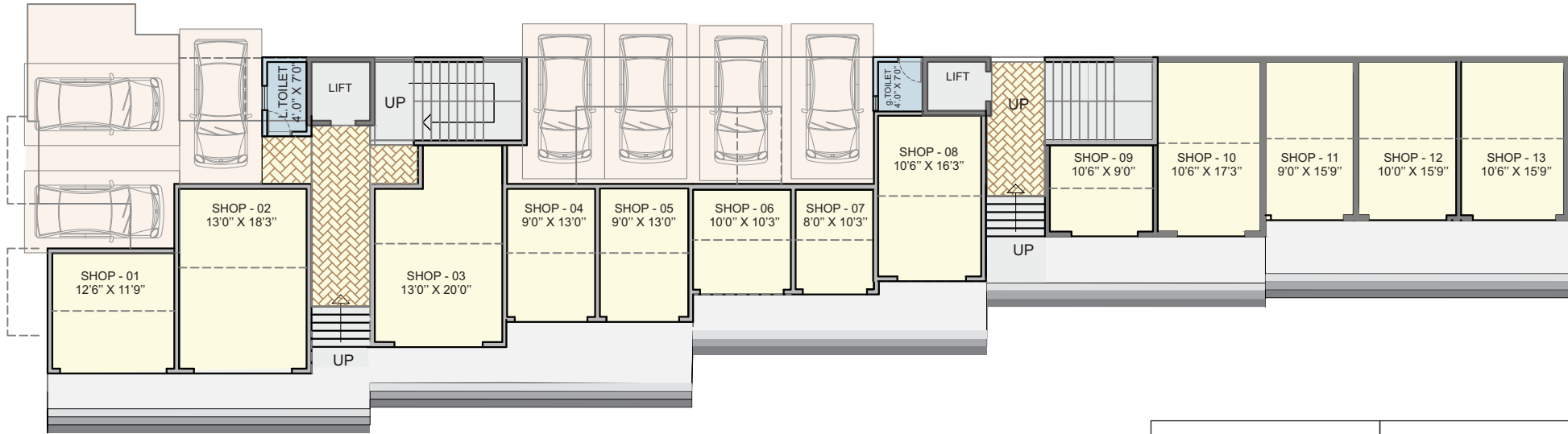
- Posh Entrance lobby
- Toddlers / children play area
- DG back — up for lifts, pump and common area
- Automatic water pumping System
- Ample Parking Space
- Commercial Shopping
- Party Lawn with stage
- Fire fighting system
- Provision for intercom system
- Acupressure path way

## SPECIFICATIONS

---

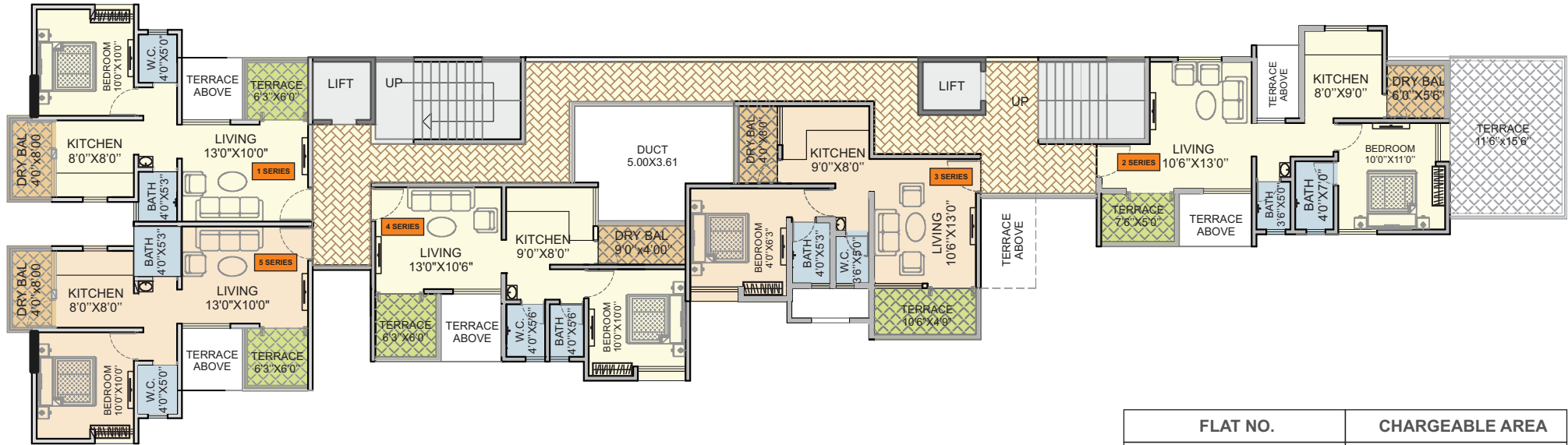
- 2x2 Vitrified tiles for Entire Flat
- Granite kitchen platform
- Water purifier in kitchen
- D.G. backup for 1 light & 1 fan point for each units.
- Ample Parking Space
- Dry balcony /utility space for washing machine
- High design toilet tiles
- Superior ( OBD ) paint for internal wall
- Provision for TV, Telephone / WI-FI / Broadband connections
- Powder coated sliding window with Mosquito Net & Safety Grills
- Elaborated Electrical layout with premium quality modular switches and fire retardant wire
- Automatic water pumping System
- Single tone super white paint for internal wall and acrylic paint external walls
- Finest quality C.P.Fittings & sanitary ware Jaguar /equivalent
- Matt finish ceramic tiles for Terrace & Balcony
- Exterior Superior Quality water proof paint
- Molded /decorative doors with S.S finished fittings and locks

# GROUND FLOOR PLAN



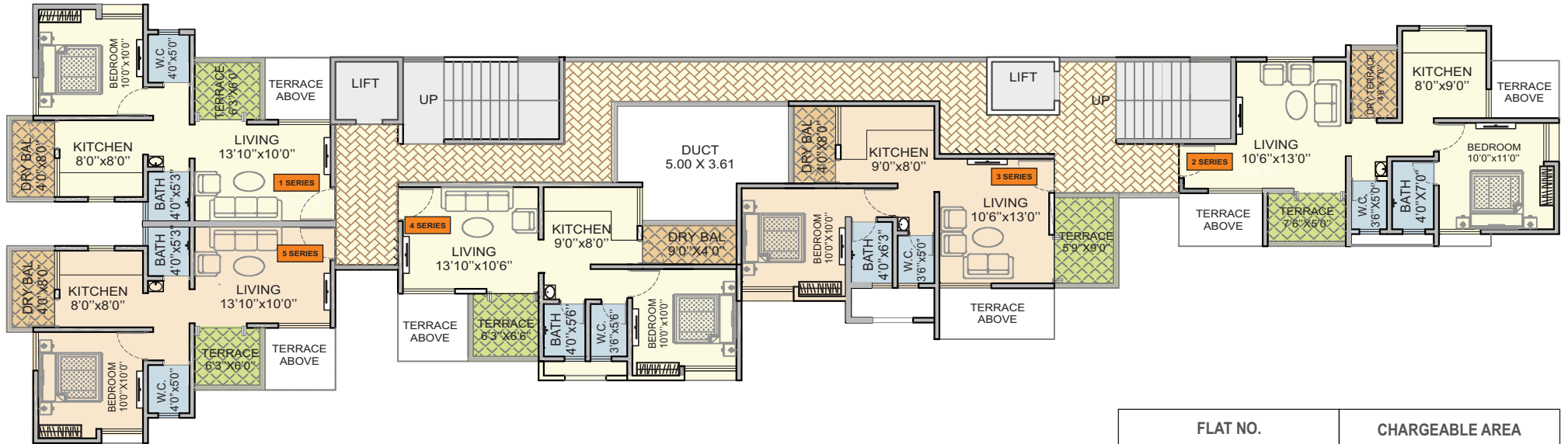
SHOP NO.	CHARGEABLE AREA
SHOP 01	331
SHOP 02	529
SHOP 03	451
SHOP 04	264
SHOP 05	264
SHOP 06	231
SHOP 07	186
SHOP 08	278
SHOP 09	209
SHOP 10	403
SHOP 11	313
SHOP 12	348
SHOP 13	365

# TYPICAL ODD FLOOR PLAN



FLAT NO.	CHARGEABLE AREA
101,301,501,701,901,1101	610
102	803
302,502,702,902,1102	683
103,303,503,703,903,1103	645
104,304,504,704,904,1104	632
105,305,505,705,905,1105	610

# TYPICAL EVEN FLOOR PLAN



FLAT NO.	CHARGEABLE AREA
201,401,601,801,1001	610
202,402,602,802,1002	683
203,403,603,803,1003	645
204,404,604,804,1004	632
205,405,605,805,1005	<b>610</b>

## Location Map



A Project by



**RAVIRAJ REALTY**

We Build Benchmarks

**RAVIMA**

Build Smart Build Strong

**Site Address:** S.NO. 38-13/1 & 2, Main Kondhwa Road, Opp. Sai Service Station, Pune.

**Mob.:** 9922404155; **Email :** sales.astria@ravirajrealty.com; **Web:** www.ravirajrealty.com

**Disclaimer:** The Contents of this brochure are purely conceptual & have no legal binding on us. The developers reserve the right to amend the layout, plans, dimensions, elevation, color schemes, specifications & amenities, etc.